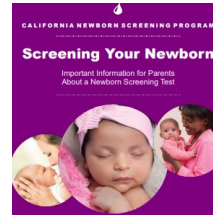
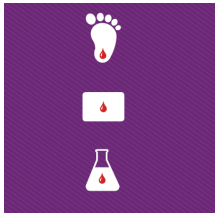


Newborn Screening: On the Spot



A seasonal newsletter brought to you by the UCLA Area Service Center

Summer/Fall 2025

Upcoming OST Training FY25-26 – Tips to Strengthen Your Workflow

We're excited to announce an upcoming online training session for both new and experienced OST users, led by Breonna Preston, Program Director of ASC 97. Whether you're just getting started or a seasoned OST user, this training will offer practical tips and proven best practices to help streamline your workflow and ensure every newborn born at your facility has properly documented NBS results. Stay tuned! Your facility will receive an email invitation this Winter with registration details.

Reminder: all live births must have a TRF received by our lab within 7 days of birth to ensure timely screening follow-up.

Need more help verifying TRFs at your facility? Please have a staff member enroll by emailing NBSOST@CDPH.CA.GOV

Annual Report Data – FY 2024–2025

In September, your facility received an email containing your annual PEP data report along with a helpful data snapshot chart. This report detailed the number of NBS panels collected by your facility during the 2024–2025 fiscal year, as well as key metrics related to specimen collection and transit.

Additionally, OST usage and TRF completion data was highlighted to support your team's efforts in ensuring timely and complete newborn screening. If you have questions or would like to review your data, feel free to contact us at **310-826-4458** or email newbornscreening@mednet.ucla.edu

We hope these annual data reports enhance your experience with the Newborn Screening Program and support continuous improvement.

Test Request Form (TRF) Completion: Every Field Matters!

This year, our ASC will assist providers in improving TRF accuracy and completeness specifically for fields directly impact test results and program compliance. Your annual PEP report highlights missing fields from past submissions. Please ensure each TRF includes:

- **Accurate birth weight and gestational age,**
- **Accurate Date and time of birth and Date and time of specimen collection**
- **A filled bubble for feeding type, and PRBC transfusion information**
- **A filled bubble for NBS-NOT OBTAINED, with a signed parent refusal if applicable**

In addition, it's important to ensure that key information for **baby's name, MRN, guardian's name and DOB, telephone number, address and outpatient provider details** are accurate. These fields are essential for NBS follow-up.

UCLA Area Service Center Staff:

Breonna Preston, MPH, CHES, Program Director
Leslie Valladares, RN, BSN, Coordinator
Carmen Ng, MPH, Coordinator
Kelly Gafni, MPH, RD, Program Specialist
Gillian Carlos, MS, Program Specialist
Ekatarina Mitrofanova, BS, Administrative Assistant
Gianna D'Apolito, MS, Data Analyst

How to contact us:

Phone: (310) 826-4458 Fax: (310) 826-7638

Email: newbornscreening@mednet.ucla.edu

Web: <https://www.uclahealth.org/Mattel/newborn-screening-program>

Newborn Screening Area Service Center designation and funding are provided by the California Department of Public Health, Genetic Disease Screening Program