

UCLA

David Geffen School of Medicine

Dumont-UCLA Transplant Center, Dumont-UCLA Liver Cancer Center, and Pflieger Liver Institute

Present

15th Annual UCLA Liver Diseases Symposium

Available as both LIVE in-person and virtual learning

2022

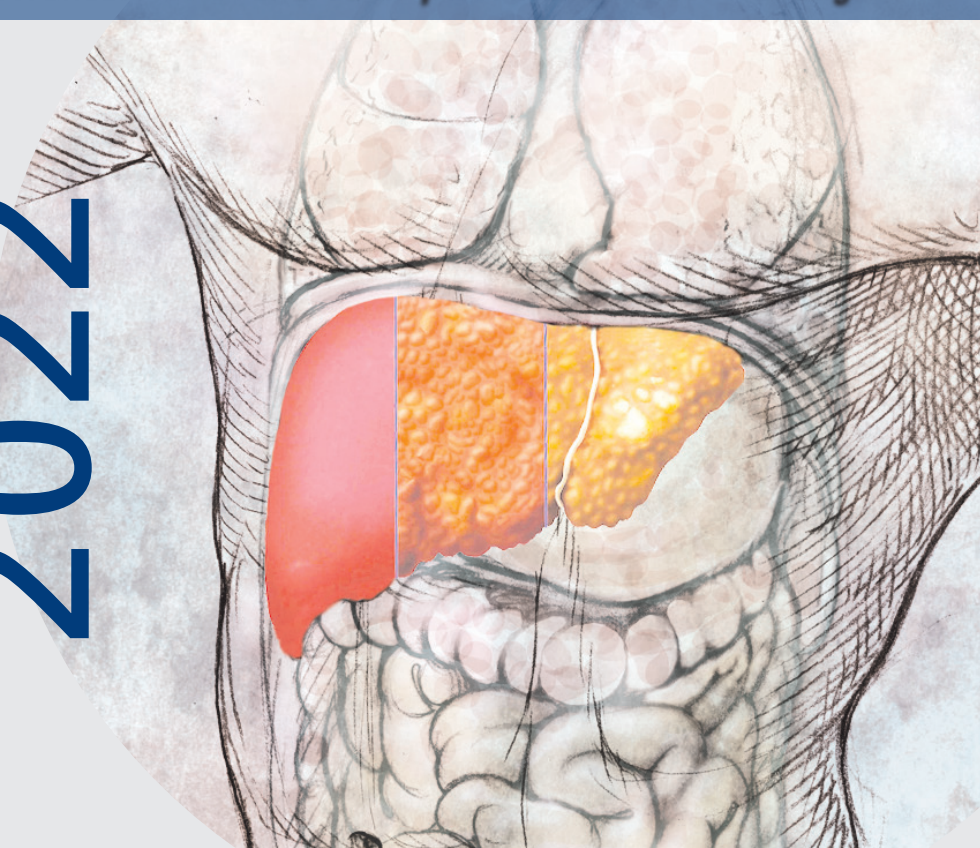
**Saturday, October 15, 2022
8:30 am – 12:30 pm (PDT)**

A Hybrid CME Conference

**Four Seasons Hotel Westlake Village
Two Dole Drive
Westlake Village, CA 91362**

CME OFFICE OF
CONTINUING
MEDICAL
EDUCATION

DAVID GEFFEN SCHOOL OF MEDICINE at UCLA



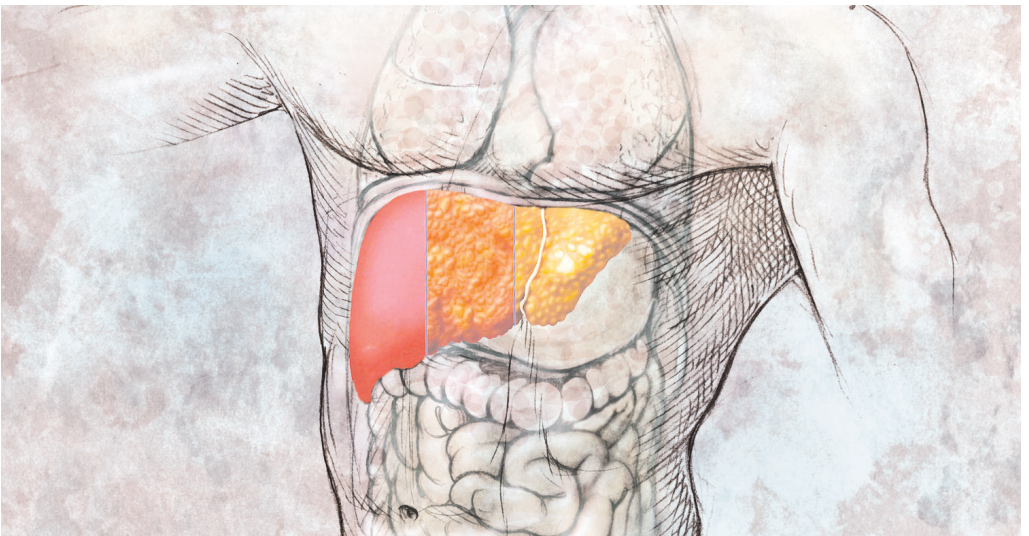
Course Description

The 15th Annual UCLA Liver Diseases Symposium will provide a state-of-the-art update and scientific exchange on prevalent liver diseases and their complications using a multi-disciplinary approach with hepatologists, radiologists and surgeons.

Course Objectives

At the conclusion of this program, participants will be able to:

- Identify liver failure milestones in patients with cirrhosis and understand the role of liver transplantation.
- Review the pros and cons of Transjugular Intrahepatic Portosystemic Shunts in patients with cirrhosis and portal hypertension.
- Discuss updates in the management of patients with viral hepatitis B, C, and D.
- Define patients at risk for hepatocellular carcinoma and utilize serum biomarkers and imaging for its early identification and intervention.
- Review the treatment of alcoholic hepatitis and understand controversies associated with early liver transplantation.
- Treat non-alcoholic fatty liver disease and employ non-invasive tests for diagnosis.
- Discuss the role of palliative care in patients with advanced liver disease.



David Geffen School of Medicine at UCLA Faculty

CHAIR

Sammy Saab, MD, MPH, AGAF, FACG, FAASLD

Professor of Medicine and Surgery
Medical Director, Pflieger Liver
Institute
Medical Director, Adult Liver
Transplant Program
Chief, Transplant Hepatology
Head, Outcomes Research in
Hepatology
Adjunct Professor of Nursing

CO-CHAIR

Fady Kaldas, MD, FACS

Kelly Lee Tarantello Chair in
Integrative Liver Transplantation
Associate Professor of Surgery
Director, Multi-Organ Transplantation
Fellowship Program
Director, Liver Transplant Service
Co-Director, Heart – Liver Disease
Program

FACULTY

Vatche Agopian, MD

Associate Professor of Surgery
Associate Director, General Surgery
Residency Program
Director, Dumont-UCLA Liver Cancer
Center

Gina Choi, MD

Associate Professor of Medicine and
Surgery
Associate Director, Transplant
Hepatology Fellowship Program

Mohamed El Kabany, MD

Associate Professor of Medicine

Douglas G. Farmer, MD, FACS

Professor of Surgery
Director, Intestinal Transplant Program
Director, Pediatric Liver Transplant
Program
Interim Chief, Division of Liver and
Pancreas Transplantation

Steven-Huy B. Han, MD, AGAF, FAASLD

Philip L. Palumbo Chair in Clinical
Hepatology
Professor of Medicine and Surgery
Program Director, Transplant
Hepatology Fellowship

Edward Wolfgang Lee, MD, PhD, FSIR

Associate Professor of Radiology and
Surgery
Director of Interventional Radiology
Residency
Director of Research
Director of Lymphatic Intervention

Arpan A. Patel, MD, PhD

Assistant Professor of Medicine
Staff Hepatologist, West Los Angeles
VA Medical Center

Saeed Sadeghi, MD

Professor of Medicine
Division of Hematology & Oncology

Akshay Shetty, MD

Assistant Professor of Medicine

Beshoy T. Yanny, MD

Assistant Professor of Medicine
Program Leader, Hepatology
UCLA Medical Center, Santa Monica

15th Annual UCLA Liver Diseases Symposium

Program

- 7:45 **Breakfast & Registration**
- 8:30 **Welcome & Introduction**
Mohamed El Kabany, MD
- 8:35 **“B, C, and D” of Viral Hepatitis Soup**
Sammy Saab, MD, MPH
- 9:00 **Indications for Liver Transplantation &
When to Refer for OLT**
Fady Kaldas, MD
- 9:25 **Role of TIPS in the Management of
Cirrhosis Portal Hypertension**
Edward Lee, MD, PhD
- 9:50 **Update on Biomarkers for Liver Cancer
Screening**
Vatche Agopian, MD
- 10:15 **Break**
- 10:30 **Advances in the Treatment of
Hepatocellular Carcinoma**
Saeed Sadeghi, MD

A Hybrid CME Conference

Saturday, October 15, 2022

Program

- 10:55 **Current and Future Therapy of NASH**
Akshay Shetty, MD
- 11:20 **Long Term Management of Liver
Transplant Recipients**
Gina Choi, MD
- 11:45 **Debate: Role of Liver Transplantation in
Patients with Alcoholic Hepatitis**
Debaters: *Douglas Farmer, MD,*
Arpan Patel, MD and
Beshoy Yanny, MD
Moderator: *Steven-Huy Han, MD*
- 12:15 **Panel Discussion: Question and Answer**
Moderator: *Sammy Saab, MD, MPH*
- 12:25 **Closing Remarks**
Douglas Farmer, MD
- 12:30 **Adjourn**
Douglas Farmer, MD

General Information

Saturday, October 15, 2022

8:30 am – 12:30 pm

Where:

Four Seasons Hotel Westlake Village
Two Dole Drive
Westlake Village, CA 91362
(818) 575-3000

Conference Location:

Sound Stage Room

Parking:

Valet parking \$13

In-person attendees will be provided breakfast and refreshments at the conference.

The 15th Annual UCLA Liver Diseases Symposium will also be available through a live virtual meeting web platform.

- Attendees who choose to attend the live virtual activity will receive a virtual meeting link and password to access the live virtual conference.
- All registrants (live or virtual) will be provided the opportunity to review recorded sessions up to 3 weeks following the conference.
- Attendees will be awarded CME credit commensurate with the extent of their participation in the live activity (either in-person or virtual). The recorded sessions are not certified for CME credit.

In the event in-person attendance is cancelled or capacity limits modified per CDC or public health guidelines, the UCLA Liver Diseases conference will be modified accordingly or presented entirely as a live virtual activity.

Enrollment:

Online

Go to www.cme.ucla.edu/courses and click on 15th Annual UCLA Liver Diseases Symposium. You may use your MasterCard, Visa, American Express, or Discover card.

By Mail

Mail the attached form to the Office of Continuing Medical Education, David Geffen School of Medicine at UCLA, 15th Annual UCLA Liver Diseases Symposium, 10920 Wilshire Blvd., Suite 1060, Los Angeles, CA 90024-6512.

By Fax

Send the completed enrollment form with your charge card information and authorizing signature to (310) 794-2624.

Any questions, please email the UCLA CME Office at UCLACME@mednet.ucla.edu or call 310-794-2620

Accreditation

The Office of Continuing Medical Education, David Geffen School of Medicine at UCLA is accredited by the Accreditation Council for Continuing Medical Education to provide continuing medical education for physicians.

The Office of Continuing Medical Education, David Geffen School of Medicine at UCLA designates this live activity for a maximum of 3.75 *AMA PRA Category 1 Credits™*. Physicians should claim only the credit commensurate with the extent of their participation in the activity.

The California State Board of Registered Nursing accepts courses approved by the AMA for category 1 credit as meeting the continuing education requirements for license renewal. Nurses from states other than California should inquire with their local State Board for specific continuing education policies.

The American Board for Transplant Certification (ABTC) has approved this educational offering for up to 3.75 Category One Continuing Education Points for Transplant Certification (CEPTCs).

Disclosure Statement

The FDA has issued a concept paper which classifies commercial support of scientific and educational programs as promotional unless it can be affirmed that the program is “truly independent” and free of commercial influence. In addition to independence, the FDA requires that non-promotional, commercially supported education be objective, balanced, and scientifically rigorous. The policy further states that all potential conflicts of interest of the CME staff and faculty be fully disclosed to the program’s participants. In addition, Accreditation Council for Continuing Medical Education policy mandates that the provider adequately manages all identified potential conflicts of interest prior to the program. We, at UCLA, fully endorse the letter and spirit of these concepts.

15th Annual UCLA Liver Diseases Symposium

A Hybrid CME Conference

Application for Enrollment

Course Title and Number	Amount
15th Annual UCLA Liver Diseases Symposium M223-3 <i>A Hybrid CME Conference</i> Saturday, October 15, 2022 Will you be attending Live or Virtually? (please check only one option) Live Virtual <input type="checkbox"/> <input type="checkbox"/> \$50 Physicians <input type="checkbox"/> <input type="checkbox"/> \$35 Nurses and Other Allied Healthcare Professionals <input type="checkbox"/> <input type="checkbox"/> \$25 Fellows and Residents	\$

Last four digits of your Social Security Number

Name (First/Middle/Last)

Degree

Specialty

Mailing Address

City/State/Zip

(_____) _____

Area Code

Daytime Phone

(_____) _____

Area Code

Fax Number

E-mail

Check enclosed payable to: The Regents of the University of California

Charge: MasterCard Visa American Express Discover

Authorizing Signature

Expiration (Mo/Yr)

Name of Cardholder

For quickest registration processing, please register online at www.cme.ucla.edu/courses. Click on 15th Annual UCLA Liver Diseases Symposium. You will be able to register under the "Registration Information" tab.

Registration will also be accepted via Fax. Fax with credit card and expiration date directly to our office at (310) 794-2624, or Mail to: Office of Continuing Medical Education, David Geffen School of Medicine at UCLA, 15th Annual UCLA Liver Diseases Symposium, 10920 Wilshire Blvd., Suite 1060, Los Angeles, CA 90024-6512.

Due to the low enrollment fee, no refunds will be offered. A full refund will be provided if this course is cancelled, or postponed.

Please visit our website for other UCLA CME offerings at <http://www.cme.ucla.edu>

UCLA Office of Continuing Medical Education
David Geffen School of Medicine at UCLA
405 Hilgard Avenue MC 29
Los Angeles, California 90095-6938

NON-PROFIT ORG.
U.S. POSTAGE
PAID
UNIVERSITY OF CALIFORNIA,
LOS ANGELES

**15th Annual UCLA
Liver Diseases Symposium**
*Available as both LIVE in-person
and virtual learning*

**Saturday, October 15, 2022
8:30 am - 12:30 pm (PDT)**

A Hybrid CME Conference

**Four Seasons Hotel Westlake Village
Two Dole Drive
Westlake Village, CA 91362**