



Mary Adakama

University of California, Riverside

Mentor: Jennifer Anger, MD

Frailty as a Predictor in Sacral Neural Modulation Outcomes



Keyeon Dabirian

California University of Science and Medicine

Mentor: Patricia Harris, MD

Impact of Disadvantaged Neighborhoods and Nursing Home Quality on COVID-19 rates and deaths in Los Angeles Nursing Homes



Jose Guerrero

David Geffen School of Medicine at UCLA

Mentor: Allison Mays, MD

Perspectives of Hispanic Caregivers of Patients Living with Dementia: A Qualitative Study



Alexandra Johnson

David Geffen School of Medicine at UCLA

Mentors: Ebony King, MD & Mohsen Bazargan, PhD

Potentially Inappropriate Medication Use Among African American Older Adults Using Antidepressants

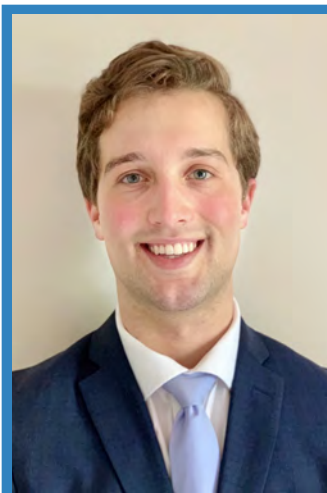


Nelly Kokikian

David Geffen School of Medicine at UCLA

Mentor: Jonathan Wanagat, MD, PhD

Optimization of staining and quantifying mitochondrial deletions in photo-aged skin



Dominic Mangino

David Geffen School of Medicine at UCLA

Mentor: Russell Buhr, MD, PhD

General public and healthcare professionals' different attitudes towards life-support triage based on survival likelihood, life-expectancy, and life-stage



Vartan Matossian

Lake Erie College of Osteopathic Medicine

Mentor: Jeffrey Saver, MD

Greater Brain Ischemia Protection Time with Prehospital Versus In-Hospital Neuroprotective Agent Start

-UCLA-
2021

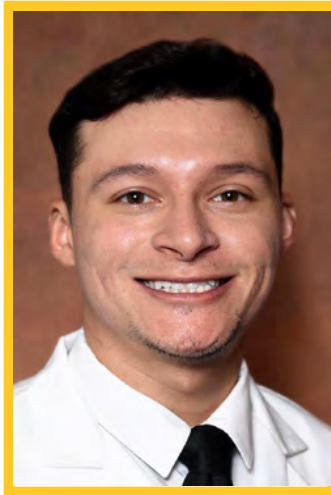


Drake Shafer

*California University of
Science and Medicine*

**Mentor: Joshua Hyong-
Jin Cho, MD, PhD**

*The Narrow Window of Sleep
Associated with Lower
Mortality in Older Adults:
A Systematic Review with
Meta-Analysis*

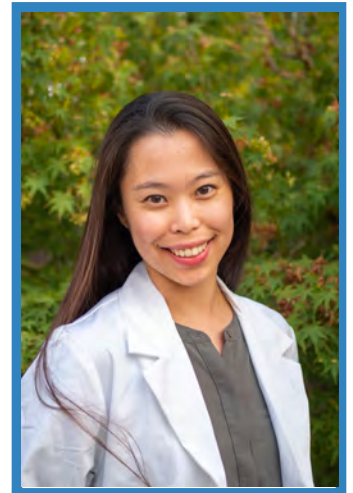


Joshua Soler

*University of California,
Riverside*

**Mentors: Herman
Davidovics, MD & Arash
Naeim, MD**

*Virtual Reality based cognitive
assessment: A feasibility and
exploratory study*



Melanie Chan

*California Northstate
University College of
Medicine*

**Mentor: Theresa Allison,
MD, PhD**

*Remembered Music in the
Context of Dementia*

MSTAR

-UCSF-
2021



Richard Gutierrez

*University of California,
San Francisco*

**Mentor: James Iannuzzi,
MD, MPH**

*Postoperative Delirium in
Patients Undergoing
Infringuinal Bypass Surgery*



Richard Kim

*University of California,
San Francisco*

**Mentor: Katrina
Abuabara, MD**

*Epidermal Barrier Function
and Cognition among Older
Adults*

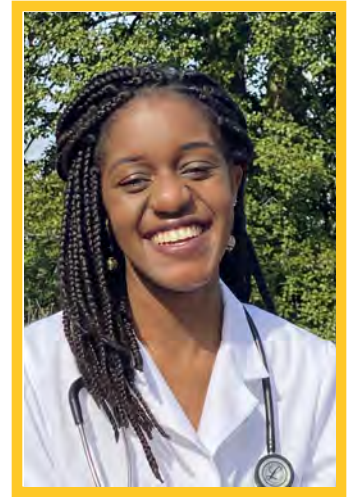


Sean Lee

*Touro College of
Osteopathic Medicine*

**Mentor: Anna Chodos,
MD, MPH**

*Ethical Dilemmas and
Experiences of Unrepresented
Older Adults*



Akua Nyarko-Odoom

*University of Virginia, School
of Medicine*

Mentor: Alison Huang, MD

*Caring, Care-receiving, and
Elder Mistreatment: Results
from a national sample of
community-dwelling older adults*



Kate Radcliffe

*UC San Francisco & UC
Berkeley Joint Medical
Program*

**Mentor: Krista Harrison,
PhD**

*Perspectives of Bereaved and
Active Caregivers of PWD:
Care at Home or Care
Transition?*



Rishika Reddy

*University of North
Carolina at Chapel Hill*

**Mentor: Anne Suskind,
MD, MS**

*The Role of Frailty and Age in
Pelvic Organ Prolapse
Procedure Rates and
Outcomes in Older Women in
the United States*



Nikita Shirsat

*University of California,
Irvine*

**Mentor: Deborah Barnes,
PhD**

*Developing and Refining a
Remote Staff Training
Program for Preventing Loss
of Independence through
Exercise in Community Living
Centers (PLIE-CLC)*



Peter Vo

*California Northstate
University*

Mentor: Anne Fabiny, MD

*Looking Through The Lens of
Colma Workers: End-of-Life
Care in HUD-VASH
Permanent Supportive
Housing*

MSTAR

**-UCSF-
2021**



Megan Ishii

*John A. Burns School of
Medicine*

**Mentor: Itay Bentov, MD,
PhD**

*Alcohol use in older trauma
patients: a descriptive
prospective study*



Nancy Le

*California Northstate
University*

**Mentor: Jose Garcia, MD,
PhD**

*Metabolic and Quality of Life
Effects of Growth Hormone
Treatment in Patients with
Traumatic Brain Injury and
AGHD*



Max Nakamoto

*John A. Burns School of
Medicine*

**Mentor: Tam Pham, MD,
FACS**

*Effect of Alcohol Use Disorder
on Outcomes in Older
Trauma Patients*



Sudiptho Paul

University of Washington

**Mentor: J. Randall Curtis,
MD, MPH**

*Examining Documentation of
Goals-of-Care Discussions
and Palliative Care Referrals
for Hospitalized Patients with
ADRD*



Brian Foresi

*Northeast Ohio Medical
University*

**Mentor: Aric Logsdon,
PhD**

*Traumatic Brain Injury and
Glycosaminoglycan Sulfation
Accelerates CTE*

MSTAR

**-UW-
2021**