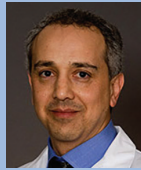




David Geffen
School of Medicine

Course Director



Reza Jahan, MD
Professor of Radiology
Medical Director of Translational Research
Imaging Center Laboratory
Department of Radiological Sciences
David Geffen School of Medicine at UCLA

Cutting Edge Interventional Solutions for Brain and Spinal Disease



October 12th, 2019
Course and Hands-on Workshop
UCLA Medical Center,
Santa Monica

Registration and course information
uclahealth.org/radiology/cme



DEPARTMENT HIGHLIGHTS

New Women's Imaging Center in Westlake Village



UCLA Westlake Village Women's Imaging Center
30700 Russell Ranch Road, Suite #110
Westlake Village, CA 91362
Central scheduling: 310-301-6800

The UCLA Department of Radiology brings world-class expertise to the Westlake Village community with the launch of our UCLA Westlake Village Women's Imaging Center, set to open this summer. Over 100 UCLA radiologists will bring a wealth of expertise to the community, with subspecialists available to interpret specialized studies.

At our Women's Imaging Center, 3D mammography, ultrasound, MRI, DEXA and breast biopsies are offered in a spa-like setting designed to promote ease and comfort. 3D mammography has been shown to have 40 percent greater specificity and 15 percent fewer call-backs for additional patient evaluations than traditional mammograms. Our Women's Imaging Center is the first outpatient center in Ventura County to use the Siemens MAGNETOM Vida 3-Tesla MRI, a state-of-the-art technology that can adapt to the patient's body and movement, resulting in higher-quality images while increasing patient comfort.

Santa Clarita Administrative Team

The UCLA Santa Clarita Imaging and Interventional Center front desk team uses CI-CARE practices to make sure we always put our patients first. The front desk team is the first encounter for every radiology patient visiting our facility and our team exhibits professionalism and compassion in all their interactions, whether checking in patients or helping to schedule follow-up care. In providing the best service to each patient, our team routinely supports patients who see other providers in the community, provides images patients can keep on CD, supports walk-in X-ray cases and helps with scheduling as needed. To learn more about Santa Clarita Imaging and Interventional Center, go to uclahealth.org/radiology/scic



Top from left to right, Pricilla Cervantes, Samantha Ramirez, Andranik Khacheryan, Brittany Lemos, Bottom from left to right, Giovana Paz, Adriana Castaneda, Christina Garcia