

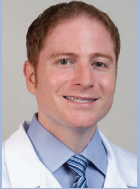


David Geffen
School of Medicine

9th Annual UCLA Musculoskeletal Ultrasound Course and Hands-on Workshop

Featuring Concurrent Introductory and Intermediate Level Tracks

Course Director

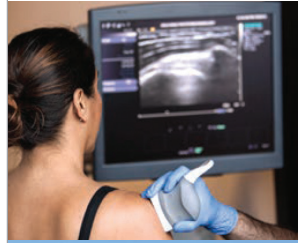


Benjamin D. Levine, MD
Associate Clinical Professor of Radiology
Director, Musculoskeletal Interventions
Musculoskeletal Imaging
Department of Radiological Sciences
David Geffen School of Medicine at UCLA

Clinical Co-director



Kambiz Motemedi, MD
Professor of Radiology
Director, Beach Imaging & Interventional Center
Musculoskeletal Imaging
Department of Radiological Sciences
David Geffen School of Medicine at UCLA



- Small group hands-on workshops
- Live, split-screen video demonstrations
- Current and updated lecture topics
- Multidisciplinary faculty



January 26 & 27, 2019
Course and Hands-on Workshop

UCLA Medical Center,
Santa Monica

Registration and course information
<http://radiology.ucla.edu/cme>



DEPARTMENT HIGHLIGHTS

UCLA Radiology Breast Interventional Scheduling Team



From left: Glenda L. Lobo, Yesenia Evangelista, Myrna Alvarez, and Jorge Lara

The UCLA Radiology Breast Interventional Scheduling Team collaborates with our radiologists, mammographers, and sonographers to ensure patients get the right procedure at the right time. Based at 200 UCLA Medical Plaza in Westwood, the team schedules breast mammography, breast ultrasound, and breast IR procedures. To ensure that the patient receives the most appropriate service, the team routinely collects past images and clinical history to collaborate with the clinic team. The Breast Interventional Scheduling Team supports breast diagnostic studies and procedures in Westwood, Santa Monica, Manhattan Beach, Santa Clarita, Thousand Oaks and Palos Verdes. To learn more, go to <http://radiology.ucla.edu/breast>