

REPORT OF THE 370TH CELL EXCHANGE

FEBRUARY 6, 2013

B-cell Line Exchange

B-cell Line	479-482
Serum	1105-1112
DNA Extract	565-568
Cells	1477-1480

We wish to express our appreciation to Helen Bass, Jane Rowlands, and Tracy Rees, Welsh Blood Service, Pontyclun, for their generous donations of interesting cells studied in our exchanges.

Ter 479. This cell from a Caucasian donor was #15310-LN, the reference cell for DRB1*14:17. It was studied in the workshops as IHW#9326 and previously typed as Ter 461 (2011), as correctly identified by Hahn, Lopez-Cepero, Mah, Rao, Stamm, and Tiercy. DRB1*14:17 was reported by 69% in this present typing. DRB1*13 was misassigned by 4 labs. Hashemi et al. (1) described the DRB1*14:17 in this cell as having “a sequence unique amongst DRB1*14 alleles at codon 47 region where DRB1*1417 was found to have the sequence TTC, usually found in DRB1*13 alleles.”

DRB1*01:01 was detected by 61%, with 14% assigning DRB1*01:01:01.

The detection of DQB1*05:01 (50%) decreased slightly compared to the 59% detection level in 2011. DQB1*05:01/07/11/12 was assigned by 14% and another 4% assigned DQB1*05:01/07/11.

DQB1*06:03 was reported by 52%.

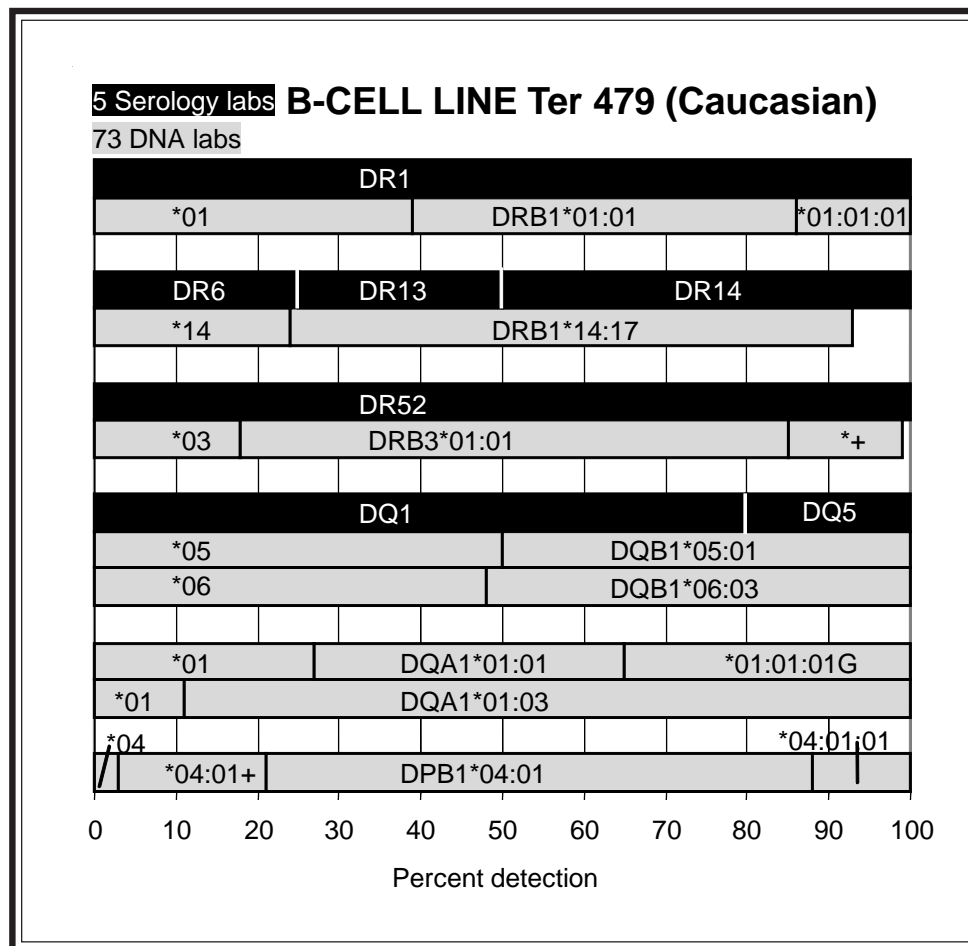
DQA1*01:01 was reported by 38%. DQA1*01:01/04/05, denoted as DQA1*01:01:01G, was reported by an additional 35%.

DQA1*01:03 was assigned by 89%.

DPB1*04:01 was detected by 79% as the sole DPB1 type.

This cell was also previously typed as extract 519 (2011). The class I type was determined to be A*03:01, A*25:01, B*47:01, B*37:01, C*06:02. Based on family studies, the haplotypes in this cell were A*25:01-B*37:01-DRB1*01:01-DQA1*01:01-DQB1*05:01-DPB1*04:01 and A*03:01-B*47:01-DRB1*14:17-DRB3*01:01-DQA1*01:03-DQB1*06:03-DPB1*04:01.

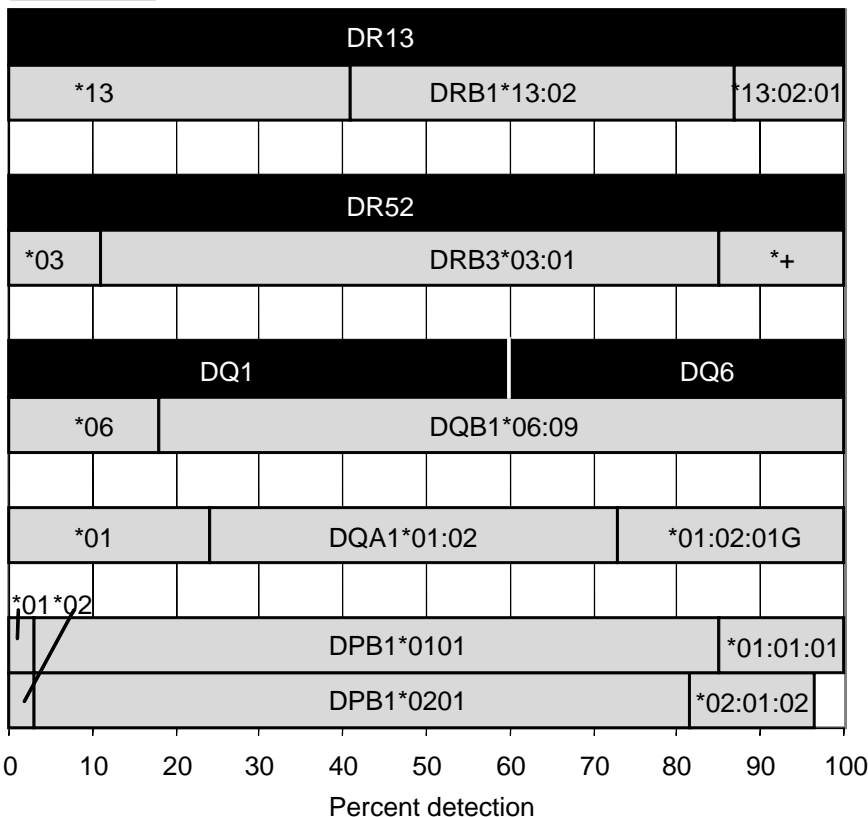
DPA1*01:03 was assigned by Charron, Chen, Eckels, Jaatinen, Kamoun, Lee, Lo, Lopez-Cepero, Mah, and Stamm.



5 Serology labs

B-CELL LINE Ter 480

71 DNA labs



Ter 480. This cell was FH71, the reference cell for MICA*030. It was studied in the workshops as IHW#9460 and previously typed in the Cell Exchange as Ter 462 (2011), as astutely noted by Hahn, Mah, Stamm, Rao, and Tiercy.

In this present study, DQB1*06:09 was reported by 82%. The DQB1 type for this cell is listed in the 13th Workshop (2) as DQB1*06:05. DQB1*06:09 differs from DQB1*06:05 by a single nucleotide substitution at codon 14 (CTG -> ATG), which results in amino acid change from leucine to methionine. Aldener and Olerup (3) described this substitution in another cell originally typed as DQB1*06:05, cell HO301, studied in the workshop cell IHW#9055.

DRB1*13:02 was assigned by 59%, with 13% reporting DRB1*13:02:01.

DQB1*06:09 was reported by 82%

Interestingly, the assignment of DQA1*01:02 dropped from a 90% detection level in 2011, to only 49% in this current study. DQA1*01:02/08/09, designated as DQA1*01:02:01G, was reported by 27%. Yan et al. (4) described DQA1*01:08 as being "identical to DQA1*01:02:01:01 except for a single-nucleotide substitution G to C at nt 470 (codon 134 GGT to GCT), resulting in a coding change, from Gly to Ala...DQA1*01:09 was identical to DQA1*01:02:01:01 except for a single-nucleotide substitution G to A at nt 377 (codon 103 GGT to GAT), resulting in a coding change from Gly to Asp."

DPA1*01:03 and DPA1*02:01 were assigned by Charron, Chen, Eckels, Jaatinen, Kamoun, Lee, Lo, Lopez-Cepero, Mah, and Stamm.

Ter 481. This Caucasian cell was previously typed as Ter 329 (2003) and Ter 378 (2006), as correctly reported by Hahn, Lopez-Cepero, Mah, Stamm, and Tilanus.

Two different subtypes of DRB1*04 were present in this cell, DRB1*04:04 (*04:04:01) (59%) and DRB1*04:09 (72%). DRB1*04:09 was assigned by only 59% in 2006, showing improved standardization for this allele.

DQB1*03:01 and DQB1*03:02 were assigned by 48% and 60%, respectively.

DQA1*03:01 was reported by 73%. DQA1*03:01-03 was assigned by 12%, denoted as DQA1*03:01:01G.

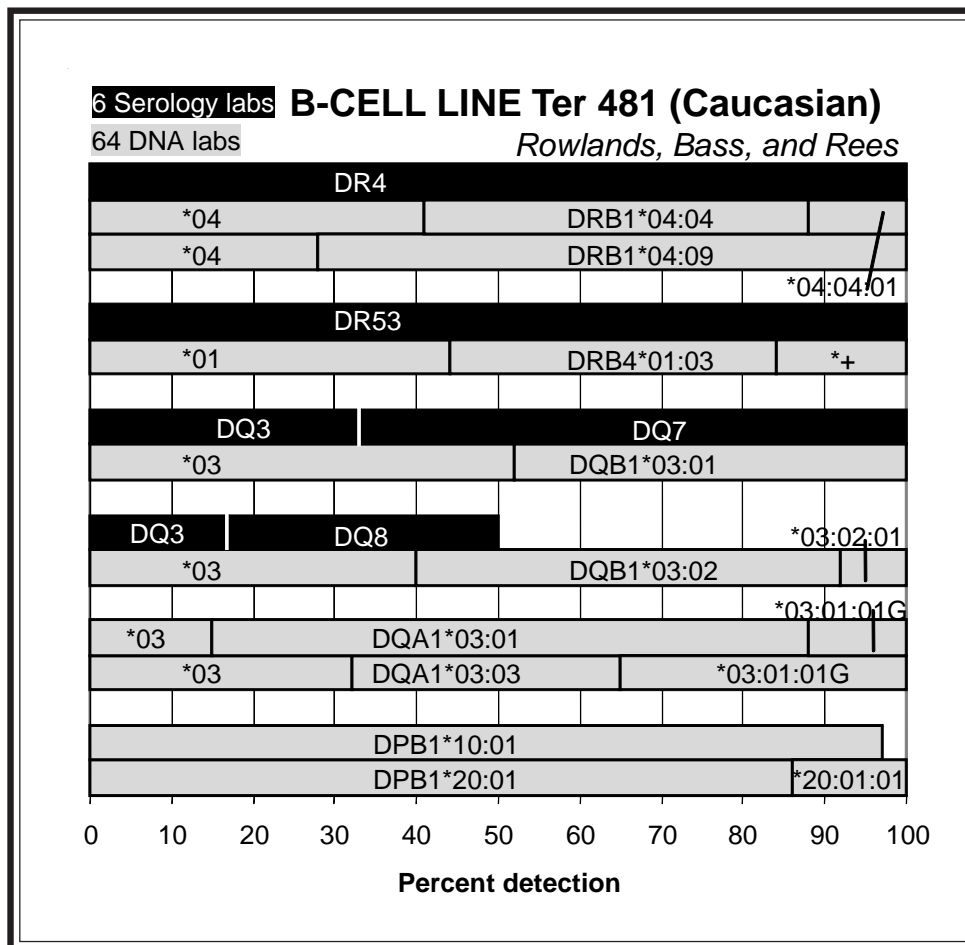
DQA1*03:03 was detected by 33%, with an additional 35% of labs reporting DQA1*03:01-03, once again denoted as DQA1*03:01:01G.

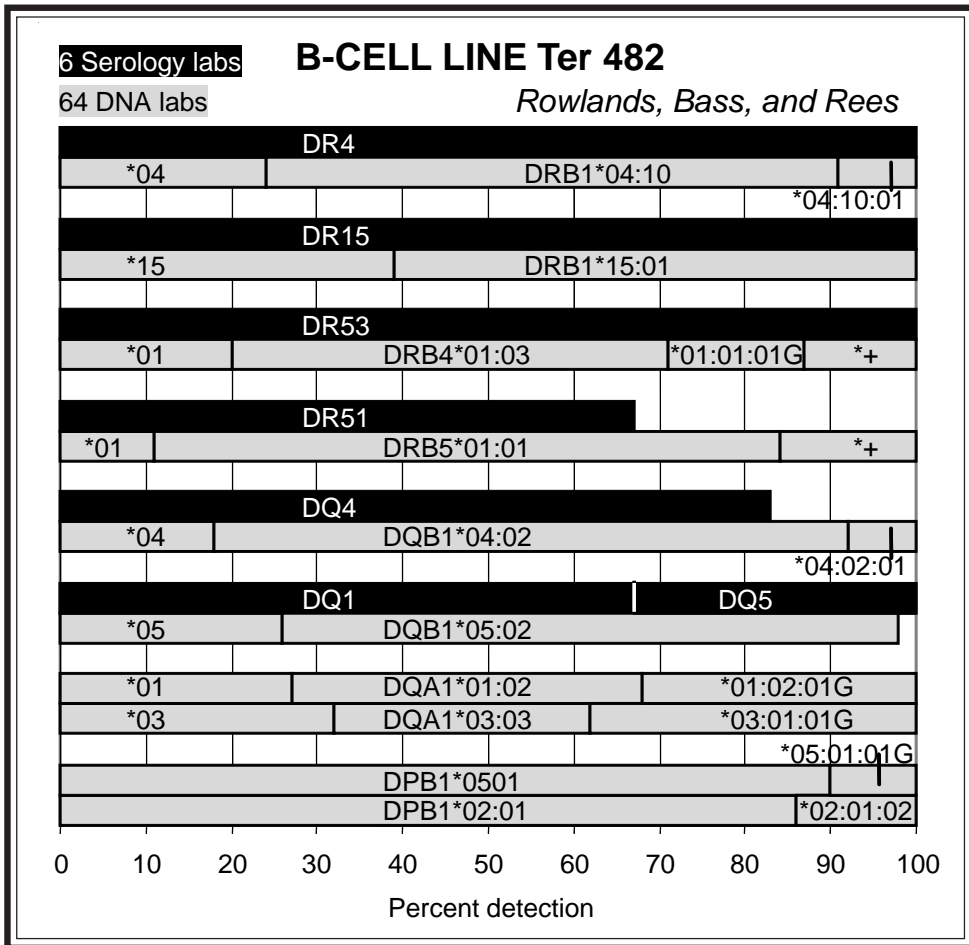
DPB1*10:01 (97%) and DPB1*20:01 (*20:01:01) (100%) were the assigned DPB1 types.

One likely association in this cell was DRB1*04:04-DRB4*01:03-DQB1*03:02-DQA1*03:01, as previously found in Ter 437 (also Ter 335) and Ter 453 (also Ter 204). The other probable haplotype was DRB1*04:09-DRB4*01:03-DQB1*03:01-DQA1*03:03.

This cell was also studied in the International HLA DNA Exchange as DNA #561 as astutely noted by Mah. The class I type for this cell was determined to be A*01:01, A*02:01, B*08:01, B*44:02, C*05:01, C*07:01.

DPA1*01:03 and DPA1*02:01 were reported by Charron, Eckels, Jaatinen, Kamoun, Lee, Lopez-Cepero, Mah, and Stamm.





Ter 482. This cell was previously typed as Ter 393 (2007), as noted by Hahn, Lopez-Cepero, Mah, Rao, Stamm, and Tilanus. DRB1*04:10 was assigned by 76%, similar to the 74% detection level in 2007. DRB1*04:10 has been typed in one other Exchange cell, Ter 476 (also Ter 377 and Ter 333).

DRB1*15:01 was reported by 61%.

DQB1*04:02 and DQB1*05:02 were assigned by 82% and 72%, respectively. Four labs were unable to distinguish DQB1*05:02 from DQB1*05:14.

DQA1*01:02 was detected by 41%, while another 32% reporting DQA1*01:02/08/09, denoted as DQA1*01:02:01G.

The other DQA1 type was DQA1*03:03, assigned by 30%. DQA1*03:01-03, denoted as DQA1*03:01:01G, was reported by 38%.

The reported DPB1 types were DPB1*02:01 (*02:01:02) (100%) and DPB1*05:01 (100%).

One possible haplotype in this cell was DRB1*04:10-DRB4*01:03-DQB1*04:02-DQA1*03:03, as previously found in Ter 377. DRB1*15:01-DRB5*01:01-DQB1*05:02-DQA1*01:02 was likely the second haplotype. This haplotype was detected previously in Ter 130, Ter 205, and Ter 276 all from donors of Asian descent, as well as in Ter 243 from a Caucasian donor.

DPA1*01:03 and DPA1*02:02 were reported by Charron, Eckels, Jaatinen, Kamoun, Lee, Lopez-Cepero, Mah, and Stamm.

Serum Exchange

One antibody study examined 4 samples (**sera 1105-1108**) strongly positive to B7. The second antibody study (**sera 1109-1112**) featured samples strongly positive to 1C and 7C specificities.

1105		method	#labs	B7	B27	B55	B42	B81	B60	B48	B8	B13	B56	B61	B41	B47	B37	B18	B67	B54	B51	B73
green	NIH-Std	5	100	60	20	20	20															
	NIH-Ext	3	100	67	100			33														
	AHG	5	100	100	60	100	60	40	40	20		60	20		20	20				20		20
	Luminex	33	94	94	97	97	94	97	91	94	97	94	94	91	91	61	88	88			48	91
	Flow	3	67	67	33	33			33	33	33	67					67	33			33	
	ELISA	3	100	100	100	100	67	100	100	67	67	67	67	67	100	33	33			67		
1105		method	#labs	B82	B65	B64	A66	B46	A32	A6602	A74	A80	B57	B39	B52	B38	B2708	Cw2	Cw17	Cw15	Cw9	Cw10
green	NIH-Std	5																				
	NIH-Ext	3																				
	AHG	5																				
	Luminex	33	79	70	55	55	52	39	39	30	24	39	33	30	27	24	79	52	45	33	18	
	Flow	3																				
	ELISA	3																				

Sera 1105-1108 were strongly positive to B7 by all methods. For **serum 1105**, varied to strong reactivity to B27 and B55 were also detected by all methods. Additional, reactivity to other 7C specificities were reported by AHG, Luminex, Flow, and ELISA. Luminex also detected reactivity to some 8C and 10C specificities, as well as to a number of C-locus antigens (Cw2, Cw9, Cw10, Cw15, Cw17).

Serum 1106 was found to be strongly positive to B7 and B55 by all methods. Reactivity to A29 and a number of 5C and 7C antigens was detected by various methods. Luminex and Flow also detected reactivity to some 10C specificities. Luminex reported additional reactivity to a number of C-locus antigens (Cw5, Cw6, Cw15, Cw17) and 4C specificities.

1106		method	#labs	B7	B55	B42	B56	B41	B81	B8	B27	B57	B54	B18	A29	B37	B48	B52	B63	B58	B60	B67	B59	B65	A32	A33	A68
orange	NIH-Std	5	80	80	60	40		20																			
	NIH-Ext	3	100	100		67	33	33	33																		
	AHG	5	100	60	100	60	40	40	40	80	40	20	20		60	40		20	40	20							
	Luminex	33	97	97	97	97	91	91	91	94	97	97	91	94	91	85	82	91	91	94	88	82	79	82	79	79	79
	Flow	3	67	33	33		33		33	67	67	33	33	33		33							33	33	33	33	33
	ELISA	3	100	100	100	67	100	100	33	100	33	100	33	33	33	67	33	33				67	33				
1106		method	#labs	A25	A31	A34	A11	A66	B73	B82	B64	B46	B62	A2	A43	A74	A30	A26	Cw2	Cw15	Cw1	Cw5	Cw17	Cw18	Cw6	Cw14	Cw4
orange	NIH-Std	5																									
	NIH-Ext	3																									
	AHG	5																									
	Luminex	33	79	73	70	67	58	94	82	76	73		85	82	82	79	55	91	91	88	88	88	88	85	79	76	
	Flow	3		33	33	33							67														
	ELISA	3	33						33																		

1107	method	#labs	B7	B27	B42	B81	B13	B56	B60	B55	B61	B47	B54	B8	A24	A2403	A80	B67	CW2	B41	A23	A3	B73	B82	A36	A1	A11	A66	A6602	B57	B2708	Cw17	Cw1	Cw14	A32	A1101	A1102		
purple	NIH-Std	5	100	20	40	20																																	
	NIH-Ext	3	100	67		33		33																															
	AHG	5	100	100	100	60	20	20	80	20	60	20	20	20							20																		
	Luminex	33	94	94	100	97	94	91	97	94	94	94	91	94	94	21	91	85	82	76	73	93	91	82	70	67	64	55	42	52	27	42	27	27	24	15	15		
	Flow	3	67	67	33		67			33	67				33	33						33																	
	ELISA	3	100	100	100	100	67	33	100	100	67	67	33			33		67	33																				

For **serum 1107**, all methods were strongly positive to B7 and B27. Additionally, all methods, detected varied reactivity to a number of other 7C specificities. Anti-A24 and -B8 reactivity was also reported by multiple methods. Luminex reported additional strong reactivity to 1C specificities and weaker reactivity to a number of C-locus antigens (Cw1, Cw2, Cw14, Cw17).

1108 was found to be strongly positive to B7 and B27 by all methods. Reactivity to B12 (B55, B56) was also reported by all methods. AHG, Luminex, and ELISA also detected strong anti-B42 reactivity. Additional positivity to other 7C specificities were reported by various methods. Luminex also reported reactivity to A10 (A66, A25) and a number of C-locus antigens.

1108	method	#labs	B7	B27	B55	B56	B42	B81	B60	B47	B48	B54	B61	B13	B57	B73	B63	B67	B82	B46	Cw2	Cw9	Cw15	Cw10	Cw1	Cw14	Cw16	A66	A6602	A25	B2708							
brown	NIH-Std	5	100	100	40	40	20	20								20																						
	NIH-Ext	3	100	100	67	67		33																														
	AHG	5	100	100	80	80	100	60	40	20	60	40	20	20	20	20																						
	Luminex	33	94	91	97	91	100	94	97	94	91	97	97	94	82	97	94	88	88	73	82	76	76	67	55	52	42	55	42	27	27							
	Flow	3	67	67	67		33		33	33	33			67																								
	ELISA	3	100	100	100	100	100	100	100	100	100	33	67	67		33		33	67																			

In the second antibody study, **sera 1109-1112**, were found to be reactive to 1C and 7C specificities by all methods. **Serum 1109** was reported by antiglobulin, Luminex, Flow, and ELISA to be positive to A11. Additional reactivity to B51 was detected by Luminex, Flow, and ELISA. Luminex also reported positivity to some specificities in the 5C and 10C groups.

1109	Method	A11	B51	A43	B76	B78	B52	A25	B75	A1101	A1102	A6601	A1
green	NIH-Std	no consensus											
	NIH-Ext	no consensus											
	AHG	no consensus											
	Luminex	82	79	76	76	58	52	24	21	18	18	18	15
	Flow	100	50										
	ELISA	67	33										

1110	Method	A1	A11	A25	A26	B18	A36	A23	A66	A34	A80	A43	B73	A24	A33	B76	B64	B65	B51	Cw18	Cw6	Cw7	Cw4	B78	B8	A6601	A68	A1101	A1102	B39
orange	NIH-Std	no consensus																												
	NIH-Ext	no consensus																												
	AHG	no consensus																												
	Luminex	94	82	94	94	94	91	73	64	94	94	88	88	76	73	73	67	67	61	79	67	67	52	45	36	33	30	18	18	15
	Flow	100	100	50	50	50	50	50	50																					
	ELISA	no consensus																												

For **serum 1110**, Luminex and Flow detected strong anti-A1 and –A11 reactivity. Additional reactivity to A10 (A25, A26, A66), A23, A36, and B18 were reported by Luminex and Flow. Luminex labs also reported strong

reactivity to A33, A34, A43, A80, B73, B76 and varied reactivity to a number of C-locus antigens (Cw4, Cw6, Cw7, Cw18).

Serum 1111 was found to be strongly positive to B13 by all methods. Reactivity to other 7C (B60, B61, B41, B47) and some 12C (B44, B45, B49, B50) specificities were reported by various methods. Luminex, Flow, and ELISA labs detected additional reactivity to B35, B51, B52, and B38. Strong anti-B7 and –B62 reactivity were also reported by Luminex and Flow. Additional reactivity to a number of 5C specificities were also reported by Luminex.

For **serum 1112**, strong reactivity to A3 was reported by all methods. Additional reactivity to A1, A11, B49, B50, and some 5C antigens were also reported by the various methods. Luminex and Flow detected strong reactivity to A24 and varying reactivity to B73 and B13. Strong reactivity to A36, B71, B77, a number of C-locus antigens (Cw4, Cw9, Cw10, Cw14, Cw18) were also reported by Luminex.

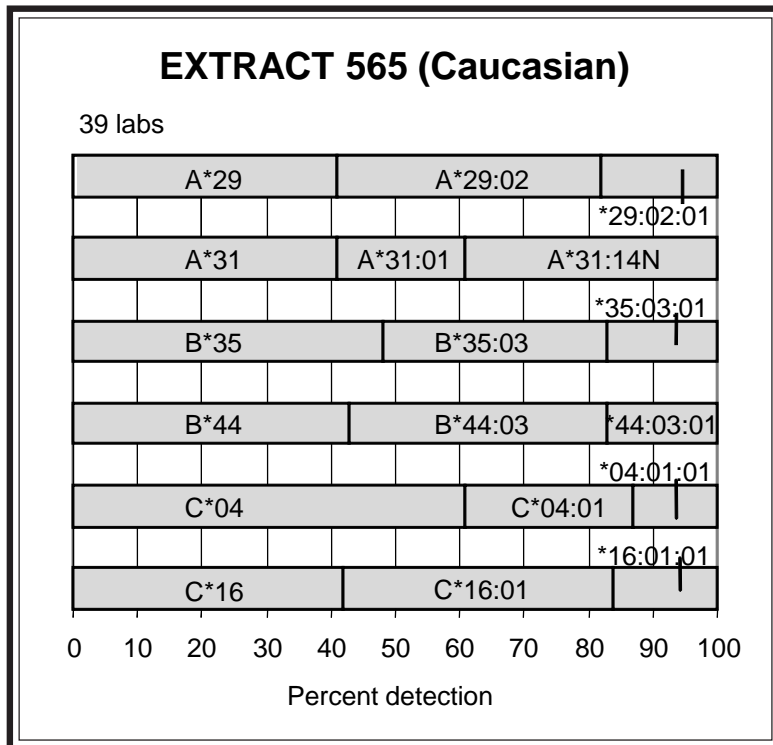
1111 purple	Method	B13	B61	B60	B41	B45	B47	B50	B49	B44	B51	B52	B35	B38	B62	B7	B75	B63	B48	B59	B63	B39
	NIH-Std	60	20																			
	NIH-Ext	100	33	67	33																	
	AHG	80	20	20	40	20	20	20	20	40												
	Luminex	94	94	94	94	91	91	94	94	91	82	82	73	73	91	73	88	82	79	64	64	48
	Flow	100		50	50	100	50	50	100	50	50	50	50	50	100	100						
ELISA	100	67	67	100	100	100	100	67	33	33	33	33	33			33	33	33	33	33	33	
1111 purple	Method	B40	B76	B27	B77	B72	B37	B57	B71	B81	B46	B56	B78	B58	B2708	A43						
	NIH-Std																					
	NIH-Ext																					
	AHG	40																				
	Luminex		88	82	82	73	64	64	64	58	45	39	30	27	21	15						
	Flow																					
ELISA																						

1112 brown	Method	A3	A11	B62	A1	B35	B49	B63	B75	B72	B50	B51	B52	A24	B46	B53	B56	B57	B76	B73	Cw1	B13	A23	B59	B18	A36	B71	B77	Cw9	Cw10	Cw14	Cw18	Cw4	
	NIH-Std	100	40		20							20	20										20											
	NIH-Ext	100		33																														
	AHG	100	60	20	20	20	20	20			20										20													
	Luminex	94	79	91	88	88	85	91	88	91	88	79	85	91	79	91	91	88	88	88	88	67	42				91	88	85	82	82	85	82	73
	Flow	100	100	100	100	50	50		50	50					100						50				50									
ELISA	67	67	100		33	33	100	100	67	33	33	67			67	33	33	33	33				33											
1112 brown	Method	A32	A80	A74	A30	A31	A29	A25	A34	A33	B55	B58	B78	B45	B37	B44	A43	A26	A66	A1101	A1102	Cw5	Cw15											
	NIH-Std																																	
	NIH-Ext																																	
	AHG																																	
	Luminex	79	79	67	58	58	55	52	52	48	52	52	42	39	27	21	39	36	24	21	21	36	33											
	Flow																																	
ELISA																																		

Extract Exchange

We wish to acknowledge the collaboration of Helen Bass, Jane Rowlands, and Tracy Rees, Welsh Blood Service, Pontyclun, in providing us with the

valuable reference cells studied in our exchanges.



Extract 565. This Caucasian cell was DSA31N, the reference cell for A*31:14N. It was previously typed as extract 385 (2007). During routine typing for a potential bone marrow transplant, Smith et al. (5) observed discrepant results between the serologic and molecular-based typing results of this cell. Molecular typing results revealed A*29 and A*31, however the A*31 allele was not detected by serologic typing. After separating the A-locus alleles for sequencing, investigators found that a “frame-shift mutation occurred in the HLA-A*31 allele where an extra C was inserted at 629 bp at the end of a string of seven Cs.” In the 2007 study, only 4 labs (Ellis, McIntyre, Scornik, and Wernet) assigned A*31:14N. In this present retyping, A*31:14N was detected by 39%, showing improved standardization for this null allele. A*31:01 was misassigned by 15%.

A*29:02 (*29:02:01) was reported by 59%.

B*35:03 (*35:03:01) and B*44:03 (*44:03:01) were assigned by 52% and 57%, respectively.

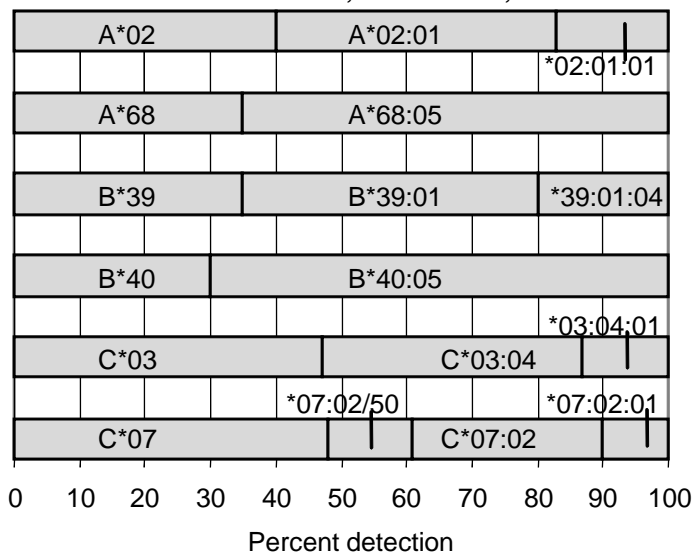
The C-locus types were C*04:01 (39%) and C*16:01 (*16:01:01) (58%).

From family studies and previous exchange data, the haplotypes for this cell were found to be A*31:14N-B*35:03 (*35:03:01)-C*04:01-DRB1*07:01-DRB4*01:01-DQB1*02:02 and A*29:02-B*44:03 (*44:03:01)-C*16:01 (*16:01:01)-DRB1*07:01-DRB4*01:01-DQB1*02:02.

EXTRACT 566

40 labs

Bass, Rowlands, and Rees



Extract 566. This A*68:05 cell was previously typed as extract 344 (2005), as astutely noted by Stamm. A*68:05 was reported by 65%, a noted increase from the 45% detection level in 2005.

The other A-locus type was A*02:01, assigned by 60%.

B*39:01 was detected by 65%, with 20% assigning B*39:01:04.

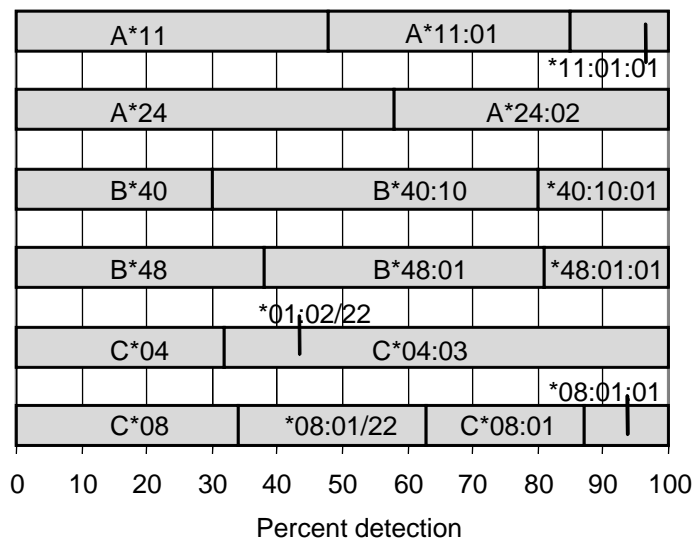
B*40:05 was assigned by 70%.

C*03:04 (53%) and C*07:02 (39%) were the C-locus types. A number of labs, 13%, were unable to distinguish C*07:02 from C*07:50.

One likely association in this cell was B*39:01-C*07:02, observed across all populations. The second probable association was B*40:05-C*03:04, listed in the NMDP Bioinformatics website as observed exclusively in Hispanics, with HF=0.00502.

EXTRACT 567 (Filipino)

40 labs



Extract 567. This cell from a Filipino donor was previously typed numerous times in the exchange as cells 1425 (2011), 1282 (2006), 1225 (2005), 1159 (2003), and 1128 (2002).

B*40:10 was reported by 70%, with 20% assigning B*40:10:01.

B*48:01 was detected by 62%, with 15% reporting B*48:01:01.

A*11:01 and A*24:02 were reported by 52% and 42%, respectively.

C*04:03 was assigned by 68%.

The other C-locus type was C*08:01 (37%). A number of labs, 29%, were unable to resolve C*08:01 from C*08:22.

One possible haplotype in this cell was A*11:01-B*40:10 (*40:10:01)-C*04:03, found in previous B*40:10 exchange cells, cells 1165 (also 1092, 991), 1183, and 1378. The other likely haplotype was A*24:02-B*48:01 (*48:01:01)-C*08:01, with HF=0.00624 in Asians.

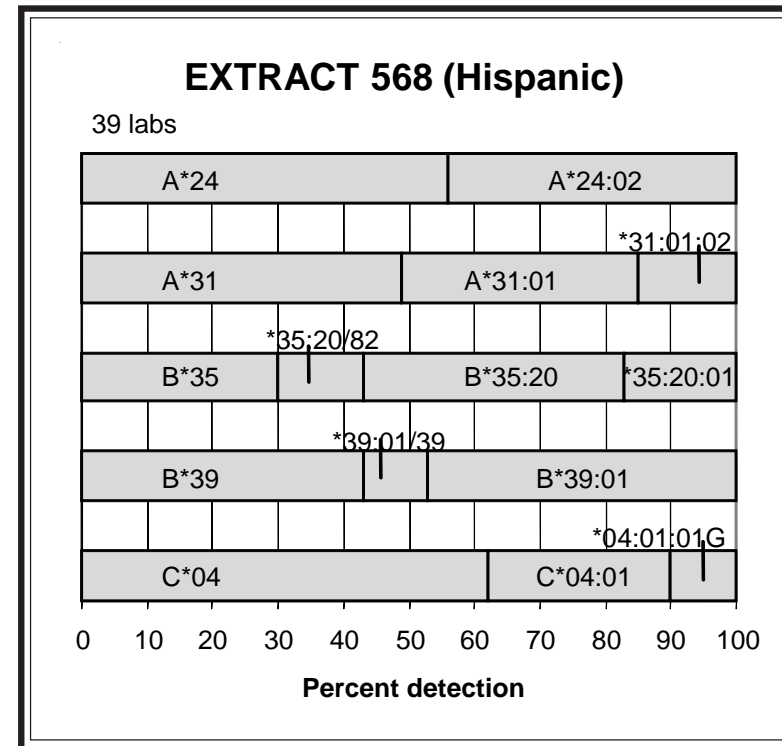
Extract 568. This Hispanic cell was previously studied as cell 1375 (2009). In the 2009 study, B*35:20 was reported by 43%. In this present retyping, B*35:20 was assigned by 57%, with 17% of labs assigning B*35:20:01. B*35:20/82 was reported by 13%. B*35:20 has been typed in one other Exchange cell, cell 1476, also of Hispanic origin.

The other B-locus allele present in this cell was B*39:01 (47%). B*39:01/39 was assigned by 10%.

A*24:02 and A*31:01 were reported by 44% and 51%, respectively.

C*04:01 (38%) was reported as the sole C-locus type.

One likely association in this cell was B*39:01-C*04:01, with HF=0.00025. B*39:01 is more often associated with C*07:02 or C*12:03, hence the low frequency with C*04:01. The other probable association in this cell may be B*35:20-C*04:01, with HF=0.00125, respectively. The NMDP Bioinformatics website lists these associations as exclusively observed in Hispanics.



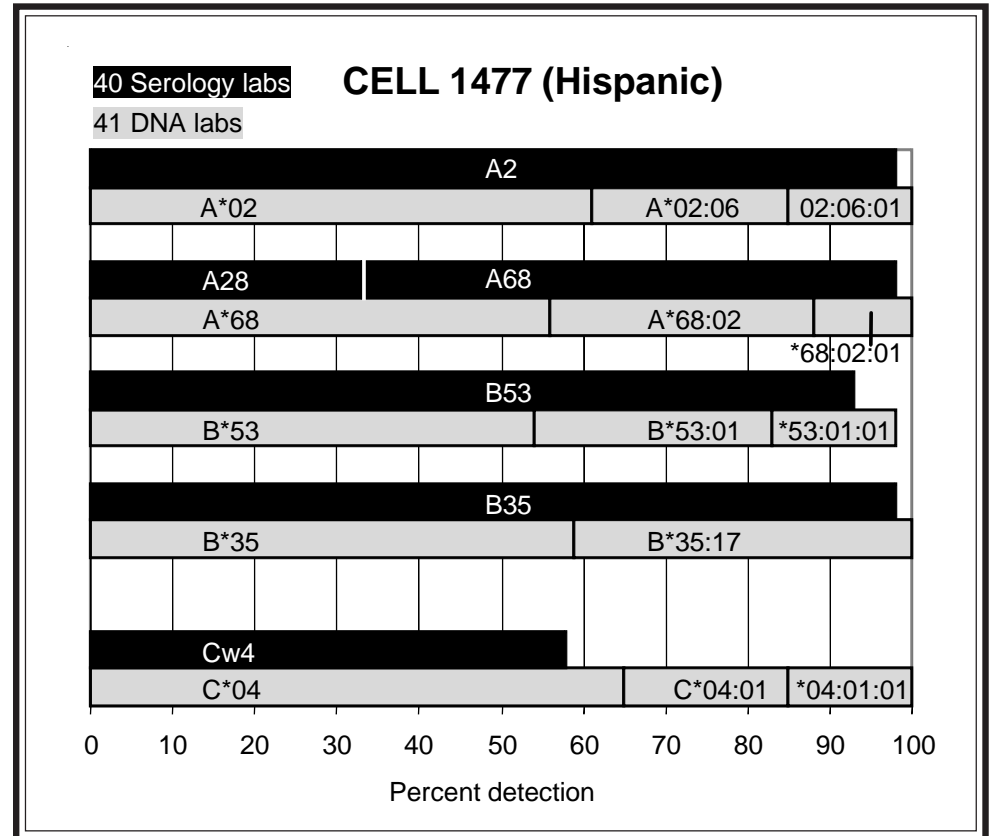
Cell Exchange

Cell 1477. This Hispanic cell was previously studied as cells 1199 (2004) and 1175 (2003), as astutely noted by Askar, Claas, Lopez-Cepero, and Mah. B35 was well typed by 98% and confirmed as B*35:17 (41%) in this present retyping.

B53 was detected by 93% and corroborated as B*53:01 (44%), with 15% assigning B*53:01:01.

A2 (98%) and A68 (65%) were the reported A-locus types and confirmed as A*02:06 (*02:06:01) (39%) and A*68:02 (*06:02:01) (44%), respectively. It is interesting to note the decline in the detection level of A*02:06 from 51% in 2004 to 39% in this present retyping.

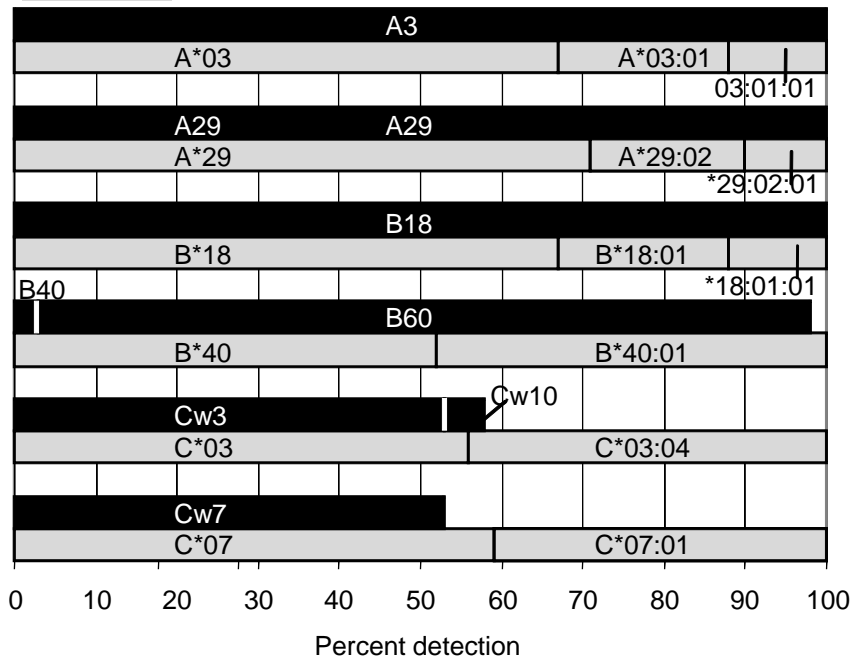
This individual was a sibling of cells 1370 (also 1160) and 1393. The siblings share the A*68:02-B*53:01-C*04:01 haplotype. The other haplotype in this cell, A*02:06-B*35:17-C*04:01, is listed in the NMDP Bioinformatics website as exclusively observed in Hispanics, with HF= 0.00325.



40 Serology Labs

CELL 1478 (Hispanic)

42 DNA labs



Cell 1478. A3 and A29 were typed in complete consensus in this cell from an Hispanic donor. A*03:01 (*03:01:01) (33%) and A*29:02 (29%) were the assigned A-locus alleles.

The B-locus types were B18 (100%) and B60 (95%), validated as B*18:01 (*18:01:01) (33%) and B*40:01 (48%).

Cw3 was detected by 53%, with an additional 5% assigning Cw10. C*03:04 was assigned by 44%. Cw7 (53%) was reported as the other C-locus antigen and confirmed as C*07:01 (41%).

One likely association in this cell was B*40:01-C*03:04, with HF=0.01204 in Hispanics. The other possible association was B*18:01-C*07:01, with HF=0.00779. This same association was observed in previous Exchange donors, cells 1312, 1226, 1060, and 839.

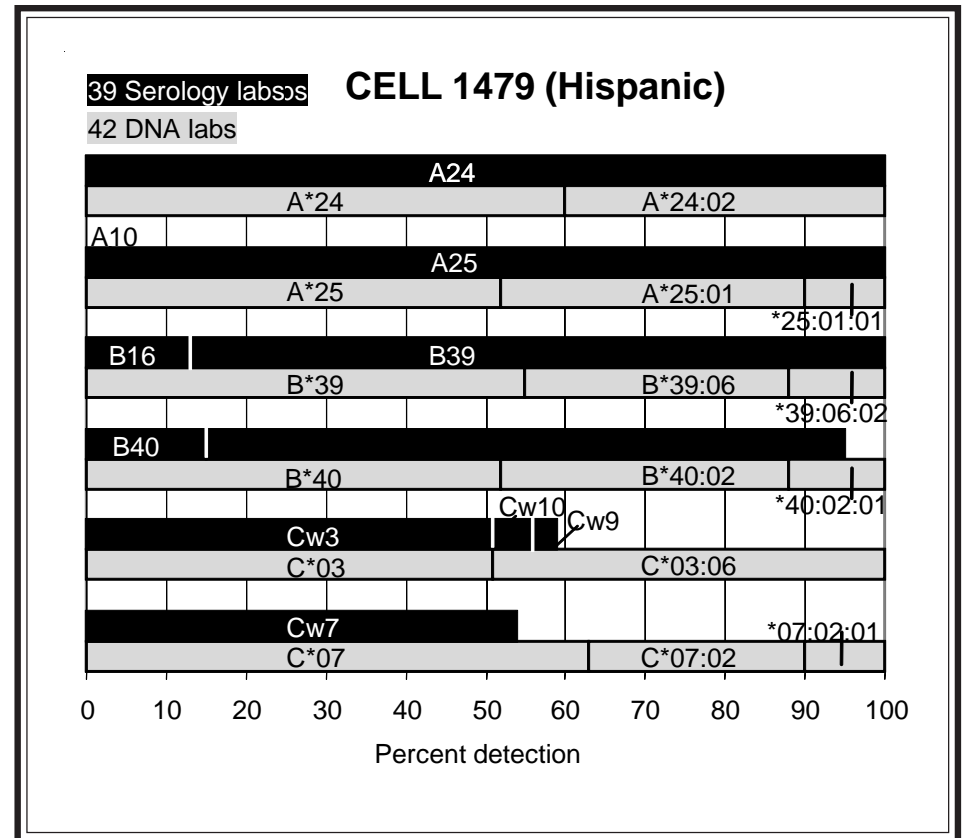
Cell 1479. This cell from an Hispanic donor was previously typed as cell 1401 (2010), as correctly reported by Askar, Claas, Lopez-Cepero, and Mah. It was also studied as extract 548 in 2012. Cw3 was reported by 51% and confirmed as C*03:06 (49%). C*03:06 is described by Turner et al. (6) as differing from its most closest relative, C*03:04:01, by a single nucleotide substitution (A->T) at position 413, resulting in an amino acid change from aspartic acid to valine at codon 114. C*03:06 was detected in two other exchange cells, cell 1099 (2001) and extract 92 (2001), both from Hispanic donors.

Cw7 (54%) was reported as the second C-locus type and corroborated as C*07:02 (37%).

B39 (87%) and B61 (80%) were confirmed as B*39:06 (*39:06:02) (45%) and B*40:02 (*40:02:01) (48%), respectively.

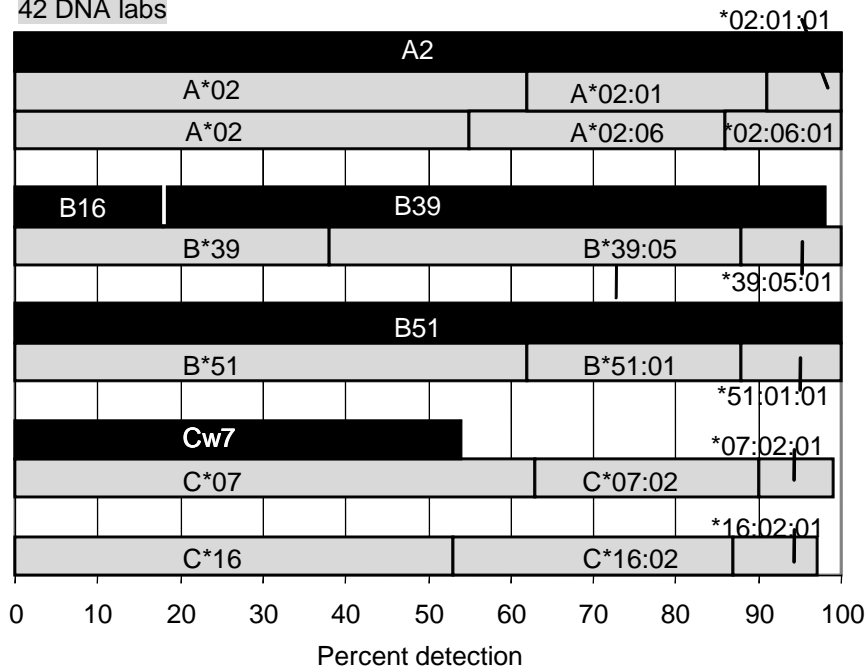
A24 (100%) and A25 (98%) were well typed and validated as A*24:02 (40%) and A*25:01 (45%).

One likely haplotype in this cell may be A*24:02-B*40:02-C*03:06, with HF=0.00355. This same haplotype was also found in extract 92. The other probable haplotype was A*25:01-B*39:06-C*07:02. This rare haplotype is listed in the NMDP Bioinformatics website as observed exclusively in Caucasians, with HF=0.00006.



39 Serology labs CELL 1480 (Hispanic)

42 DNA labs



Cell 1480. B39 was reported by 80% in this sample from an Hispanic individual. Askar, Dunk, and Fort observed that the additional reactivity of this cell with some B38 anti-sera was consistent with B39 alleles such as B*39:05. The presence of B*39:05 was confirmed by 62%.

B51 was reported in completed consensus as the second B-locus antigen and confirmed as B*51:01 (38%).

Cw7 was detected by 54%. C*07:02 (36%) and C*16:02 (44%) were assigned as the C-locus alleles.

One probable haplotype in this cell was A*02:06-B*39:05-C*07:02. The NMDP Bioinformatics website lists this haplotype as exclusively observed in Hispanics, with HF= 0.00631. This same haplotype was typed in another Hispanic Exchange donor, cell 1203. The other possible haplotype was A*02:01-B*51:01-C*07:02, with HF= 0.00047 in Hispanics.

References

1. Hashemi S, Aye MT, Zeibdawi A, et al. A novel HLA-DRB1*14 allele (DRB1*1417). *Tissue Antigens* 1994;44:189-192.
2. Mickelson E, Hurley C, Ng J, et al. 13th IHWS Shared Resources Joint Report. In: *Immunobiology of the Human MHC*. JA Hansen, Ed. 2006 International Histocompatibility Working Group Press, Fred Hutchinson Cancer Research Center, Seattle, 2006;523.
3. Aldener A and Olerup O. Characterization of a novel DQB1 (DQB1*0609) allele by PCR amplification with sequence-specific primers (PCR-SSP) and nucleotide sequencing. *Tissue Antigens* 1993;42:536-538.
4. Yan H, Dong XS, Li J, et al. Identification of three novel HLA-DQA1 alleles: DQA1*01:08, DQA1*01:09, and DQA1*03:03:02. *Tissue Antigens* 2012;80:536-554.
5. Smith DM, Gardner WB, Baker JE, et al. A new HLA-A*31 null allele, A*3114N. *Tissue Antigens* 2006;68:526-527.
6. Turner S, Ellexson ME, Hickman HD, et al. Sequence-Based Typing Provides a New Look at HLA-C Diversity. *J immunology* 1998;161:1406-1413.

NEXT MAILING DATE: March 6, 2013

Arlene Locke, Marie Lau, J. Michael Cecka, and Elaine F. Reed

B-CELL LINE Ter 479

CTR	DIRNAME	DRB1	DRB1X	DRB3	DQB1	DQB1X	DQA1	DQA1X	DPB1	METHOD
5488	Adams, Sharon	*01:01:01	*14:17	*01:01	*05:01:01	*06:03:01	*01:01	*01:03	*04:01:01	SSO, SBT, SSP
8070	Ahn, Jaeie	*01	*14		*05	*06			*04	P-SSP
4691	Ajlan, Abdula	*01:01/32	*13:01/110		*05:01/07/11	*06:03/28/31+				SSO
2332	Al-Awwami, M	*01:01	*14:17	*01-*03	*05:01/07/11/12	*06:03/28/31+	*01:01:01G	*01:03	*04:01	RVSSO
8075	Al-Baz, Nabe	*01:01	*14:17		*05:01	*06:03				SSO, SSP
5133	Baker, Judy	*01:01/16+	*14:17	*01:01+	*05:01/07/11/12	*06:03/40/41+				SSP
8038	Cao, Kai	*01:01:01	*14:17	*01:01:02	*05:01:01	*06:03:01	*01:01:01G	*01:03	*04:01/*126:01	SSO, SBT
774	Cecka, J. Mich	*01:01/36+	*14:17	*01:01	*05:01/07/11/12	*06:03/40/41+	*01:01	*01:03		SSP, SSOP
9916	Charlton, Ron	*01:01:01	*14:17	*01:01	*05:11	*06:03				SBT, SSP
4492	Charron, D.	*01:01/18+	*14:17	*01:01	*05:01/07/11/12	*06:03/28/31+	*01:01:01G	*01:03	*04:01	P-SSO, SSP
3224	Chen, Dongfen	*01:01	*14:17	*01:01	*05:01	*06:03	*01:01	*01:03	*04:01	SBT, SSP
8021	Clark, Brenda	*01:01	*14:17	*01	*05:01/07/11	*06:03/41			*04:01	P-SSP, RVSSO
3632	Colombe, Beth	*01:01	*14:17	*01:01	*05:01	*06:03	*01:01:01G	*01:03		SSOP, SSP
5130	Costeas, Paul	*01:01	*14:17	*01:01	*05:01	*06:03	*01:01	*01:03		SSP, SBT
779	Daniel, Claud	*01	*14	*01:01	*05	*06	*01	*01:03	*04:01	P-SSP, SSO
5219	Daniel, Dolly	*01	*14	*+	*05	*06				P-SSOP
8052	Del Pozo, Ana	*01:01/32	*14:17/*13:01/110		*05:07/11	*06:03/31/41	*01:01:01G	*01:03		P-SSO
5323	Dhaliwal, J.S	*01:01	*14:17	*01:01	*05	*06				SSP
5891	Du, Keming	*01:01	*14:17		*05:01	*06:03				P-SBT
5214	Eckels/CPMC	*01	*13	*01:01	*05	*06	*01	*01:03	*04:01	SSOP
3135	Enczmann, J.	*01:01	*14:17	*01:01	*05:01	*06:03			*04:01	SBT, P-SSP
762	Fischer/Mayr	*01:01	*14:17	*01:01	*05:01	*06:03	*01:01	*01:03	*04:01	SSO, SSP, SBT
4079	Fort, Marylis	*01:01/38+	*14:17		*05:01/07/11/12	*06:03/28/31+	*01:01:01G	*01:03		P-SSO
792	Gandhi, Manis	*01:01	*14:17	*01:01	*05:01	*06:03	*01:01	*01:03	*04:01	SSO, SSP
8043	Gideoni, Osna	*01:01	*14:17		*05:01	*06:03	*01:01	*01:03		SSO, SSP
9002	Gideoni_LR	*01	*14		*05	*06				SSP, SSO
910	Hahn, Amy B.	*01:01/36+	*14:17	*01:01	*05:01/07/11/12	*06:03/40/41+				SSP
810	Hamdi, Nuha	*01:01	*14:09		*05:07	*06:03	*01:07	*01:03		SSO
4269	Hanau, Daniel	*01:01:01	*14:17	*01:01:02	*05	*06				SBT-DR, SSP
1461	Hidajat, M.	*01:01	*14:17	*01:01	*05:01	*06:03			*04:01	SSO, SSP
2344	Hurley/Hartz	*01:01:01	*14:17		*05:01:01:01+	*06:03:01/41/44			*04:01:01:01+	SBT
771	Israel, Shosh	*01:01	*14:17		*05:01	*06:03				SSP
9003	Israel_LR	*01	*14		*05	*06				SSO
794	Jaatinen, Tai	*01:01	*14:17	*01:01	*05:01	*06:03	*01:01:01G	*01:03	*04:01	SBT, SSO, SSP
859	Kamoun, Malek	*01:01	*14:17	*01:01	*05:01/12	*06:03	*01:01	*01:03	*04:01	SBT, SSO, SSP
13	Kapoor/Park	*01:01	*14:17	*01:01	*05:01	*06:03				SSP
4337	Kim, Tai-Gyu	*01:01	*14:17		*05:01	*06:03/41/44			*04:01/*126:01	SBT
1694	Kissel&Hess	*01	*14		*05:01	*06:03				SSP
168	Klein, Tirza	*01:01	*14:17		*05:01	*06:03				P-SSO, SSP
9000	Klein_LR	*01	*14		*05	*06				P-SSO, SSP
87	Land, Geoffre	*01:01	*14:17	*01:01	*05:01	*06:03	*01:01	*01:03	*04:01	SBT, SSO, SSP
725	Lardy, N.M.	*01	*14	*+	*05	*06	*01			SSO, SSP
278	Lee, Jar-How	*01:01	*14:17	*01:01	*05:01	*06:03	*01:01	*01:03	*04:01	SSP, RVSSOP
5096	Lee, Sun-Ah	*01	*14							SSOP
640	Lee, Young K	*01:01	*14:17		*05:01	*06:03:01G				P-SBT
6649	Lim, Young Ae	*01	*14	*+						SSP
274	Lo, Raymundo	*01	*13:44		*05	*06	*01	*01	*04:01	SSO
731	Loewenthal, R	*01:01:01	*14:17		*05:01/07	*06:03/14/31+				SBT, SSO
759	Lopez-Cepero	*01:01/04+	*14:17/30/80	*01:01+	*05:01/07/11/12	*06:03/28/31+	*01:01:01G	*01:03	*04:01/*134	RVSSO
23	Mah, Helen	*01:01	*14:17	*01:01	*05:01	*06:03	*01:01	*01:03	*04:01	SSO, SSP
8029	Mani, Rama	*01	*14	*+						P-SSP

B-CELL LINE Ter 479

CTR DIRNAME	DRB1	DRB1X	DRB3	DQB1	DQB1X	DQA1	DQA1X	DPB1	METHOD
206 McAlack-Hana	*01	*13	*01	*05	*06	*01	*01:03		RVSSOP
8042 Muncher,Lior	*01:01	*14:17		*05:01	*06:03				SSO,SSP
9001 Muncher_LR	*01	*14		*05	*06				SSO,SSP
3966 Permpikul&Ve	*01:01	*14:17	*01:01	*05:01	*06:03				P-SSP
2400 Phelan,Donna	*01:01	*14:17	*01	*05:01	*06:03	*01:01:01G	*01:03	*04:01	SSO,SBT,SSP
8001 Rao,Prakash	*01:01	*14:17	*01:01	*05:01	*06:03	*01		*04:01	RVSSO,SSP
3753 Reed,Elaine	*01:01	*14:17	*01:01	*05:01	*06:03	*01:01:01G	*01:03		SBT,SSO
3798 Reinsmoen,N	*01:01:01	*14:17	*01:01	*05:01/07/11/12	*06:03/28/31+	*01:01:01G	*01:03	*04:01/*126:01+	SSO,SBT
3519 Renac,Virgi	*01:01	*14:17	*01:01	*05:01	*06:03	*01:01	*01:03	*04:01	SBT,P-SSP
1160 Rosen-Bronso	*01:01/07	*14:17	*01:01	*05:01	*06:03				SSP,SBT
793 Rubocki,Rona	*01	*14	*+	*05	*06			*04:01	SSP
4251 Schiller,J	*01:01	*14:17	*01:01	*05:01	*06:03	*01	*01	*04:01:01G	P-RVSSO,SBT
8068 Shanmugam,He	*01	*14	*01	*05	*06				P-SSP
746 Stamm,Luz	*01:01	*14:17	*01	*05:01	*06:03	*01	*01:03	*04:01	SSO,SSP,SBT
747 Tiercy,Jean-	*01:01:01	*14:17	*01:01	*05:01:01	*06:03:01	*01:01:01G	*01:03	*04:01:01	SSO,SSP,SBT
5451 Tilanus,Marc	*01:01:01	*14:17	*01:01:02	*05:01:01	*06:03:01	*01:01:01	*01:03	*04:01:01	SBT
4021 Trachtenberg	*01	*14	*01	*05	*06	*01	*01:03		SSO,SSP
5462 Turner,E.V.	*01:01:01	*14:17	*01:01+	*05:01/07/11/12	*06:03/28/31+			*04:01/*120:01N	SEQ,SSO,SSP
5642 Varnavidou-N	*01:01/25+	*14:17	*+	*05:01/07/11/12	*06:03/40/41+				P-SSP
797 Yabe,Hiromasa	*01:01	*14:17		*05:01/07/11	*06:03/28/31+	*01:01:01G	*01:03		SSO,+SBT-DR
3511 Zeevi,Adrian	*01:01	*14:17	*01:01	*05:01	*06:03	*01:01	*01:03	*04:01	RVSSOP,SSP

CTR DIRNAME	DR1	DR6	DR52	DQ1	OTH1	OTH2
4492 Charron,D.	+	DR13	+	+		
910 Hahn,Amy B.	+	DR14	+	+		
54 Pancoska,Car	+	DR14	+	+		
793 Rubocki,Rona	+		+	+		
8063 Shai,Isaac	+	DR14	+	DQ5	DR13,DR3	DQ6

B-CELL LINE Ter 479 (Caucasian)

72 DNA LABS

72LABS REPORTING DRB1

DRB1*01	39%
DRB1*01:01	47%
DRB1*01:01:01	14%
DRB1*01	100% TOTAL
DRB1*14	22%
DRB1*14:09	2%
DRB1*14:17	69%
DRB1*14	93% TOTAL

69 LABS REPORTING DQB1

DQB1*05	28%
DQB1*05:01/07/11	4%
DQB1*05:01/07/11/12	14%
DQB1*05:01	43%
DQB1*05:01:01	7%
DQB1*05:07	2%
DQB1*05:11	2%
DQB1*05	100% TOTAL
DQB1*06	48%
DQB1*06:03	45%
DQB1*06:03:01	6%
DQB1*06:03:01G	1%
DQB1*06	100% TOTAL

37 LABS REPORTING DQA1

DQA1*01	24%
DQA1*01:01	35%
DQA1*01:01:01	3%
DQA1*01:01:01G	35%
DQA1*01:07	3%
DQA1*01	100% TOTAL
DQA1*01	11%
DQA1*01:03	89%
DQA1*01	100% TOTAL

49 LABS REPORTING DRB3

DRB3*+	14%
DRB3*01:01	61%
DRB3*01:01:02	6%
DRB3*01	18%

33 LABS REPORTING DPB1

DPB1*04	3%
DPB1*04:01+	9%
DPB1*04:01/*126:01	9%
DPB1*04:01	67%
DPB1*04:01:01	9%
DPB1*04:01:01G	3%
DPB1*04	100% TOTAL

5 SEROLOGY LABS

DR1	100%
DR6	25%
DR13	25%
DR14	50%
DR6	100% TOTAL
DR52	100%

DQ1	80%
DQ5	20%
DQ1	100% TOTAL

B-CELL LINE Ter 480

CTR DIRNAME	DRB1	DRB1X	DRB3	DQB1	DQB1X	DQA1	DQA1X	DPB1	DPB1X	METHOD
5488 Adams, Sharon	*13:02:01		*03:01	*06:09		*01:02:01G		*01:01:01	*02:01:02	SSO, SBT, SSP
8070 Ahn, Jaeie	*13			*06				*01	*02	P-SSP
4691 Ajlan, Abdula	*13:02/98/99+	*13:02/98/99+		*06:09	*06:09					SSO
2332 Al-Awwami, M	*13:02	*13:02/109		*06:09		*01:02:01G		*01:01	*02:01	RVSSO
8075 Al-Baz, Nabe	*13:02	*13:02		*06:09	*06:09					SSO, SSP
5133 Baker, Judy	*13:02/99/103+	*13:01/09/114+	*03:01	*06:09						SSP
8038 Cao, Kai	*13:02:01		*03:01	*06:09		*01:02		*01:01:01	*02:01:02	SSO, SBT
774 Cecka, J. Mich	*13:02/99/123+		*03:01	*06:09		*01:02				SSP, SSOP
9916 Charlton, Ron	*13:02:01		*03:01	*06:09	*06:05:02/09					SBT, SSP
4492 Charron, D.	*13:02/109/123/124/126/140/142N		*03:01	*06:09		*01:02:01G		*01:01	*02:01	P-SSO, SSP
3224 Chen, Dongfen	*13:02		*03:01	*06:09		*01:02		*01:01	*02:01	SBT, SSP
8021 Clark, Brenda	*13:02/109		*03	*06:09				*01:01	*02:01	P-SSP, RVSSO
3632 Colombe, Beth	*13:02	*13:02/109	*03:01	*06:09		*01:02:01G	*01:02:01G			SSOP, SSP
5130 Costeas, Paul	*13:02		*03:01	*06:09		*01:02				SSP, SBT
779 Daniel, Claud	*13		*03:01	*06:09		*01		*01:01	*02:01	P-SSP, SSO
5219 Daniel, Dolly	*13	*13	*+	*06	*06					P-SSOP
8052 Del Pozo, Ana	*13	*13		*06:09	*06:09	*01:02	*01:02			P-SSO
5323 Dhaliwal, J.S	*13:02		*03:01	*06						SSP
5891 Du, Keming	*13:02	*13:02		*06:09	*06:09					P-SBT
5214 Eckels/CPMC	*13	*13	*03:01	*06:09		*01	*01	*01:01	*02:01	SSOP
3135 Enczmann, J.	*13:02		*03:01	*06:09				*01:01	*02:01	SBT, P-SSP, SSO
762 Fischer/Mayr	*13:02		*03:01	*06:09		*01:02		*01:01	*02:01	SSO, SSP, SBT
4079 Fort, Marylis	*13:02/109/123/124/126			*06:09		*01:02:01G				P-SSO
792 Gandhi, Manis	*13:02		*03:01	*06:09		*01:02		*01:01	*02:01	SSO, SSP
8043 Gideoni, Osna	*13:02			*06:09		*01:02				SSO, SSP
9002 Gideoni_LR	*13			*06						SSP, SSO
910 Hahn, Amy B.	*13:02/99/109/123/124/126/128		*03:01	*06:09						SSP
810 Hamdi, Nuha	*13:02	*13:02		*06:09	*06:09	*01:02	*01:02			SSO
4269 Hanau, Daniel	*13:02			*06						SBT-DR, SSP
1461 Hidajat, M.	*13:02		*03:01	*06:09				*01:01	*02:01	SSO, SSP
2344 Hurley/Hartz	*13:02:01	*13:02:01		*06:09	*06:09			*01:01:01	*02:01:02	SBT
771 Israel, Shosh	*13:02			*06:09						SSP
9003 Israel_LR	*13			*06						SSO, SSP
794 Jaatinen, Tai	*13:02		*03:01	*06:09		*01:02:01G		*01:01	*02:01	SBT, SSO
859 Kamoun, Malek	*13:02		*03:01	*06:09		*01:02:01G		*01:01	*02:01	SBT, SSO, SSP
13 Kapoor/Park	*13:02		*03:01	*06:09						SSP
4337 Kim, Tai-Gyu	*13:02			*06:09				*01:01	*02:01	SBT
1694 Kissel&Hess	*13			*06:09						SSP
168 Klein, Tirza	*13:02			*06:09						P-SSO, SSP
9000 Klein_LR	NT									SSP
87 Land, Geoffre	*13:02	*13:02	*03:01	*06:09	*06:09	*01:02	*01:02	*01:01	*02:01	SBT, SSO, SSP
725 Lardy, N, M.	*13		*+	*06		*01				SSO, SSP
278 Lee, Jar-How	*13:02		*03:01	*06:09		*01:02		*01:01	*02:01	SSP, RVSSOP
5096 Lee, Sun-Ah	*13	*13								SSOP
640 Lee, Young K	*13:02			*06:09						P-SBT
6649 Lim, Young Ae	*13		*+							SSP
274 Lo, Raymundo	*13:103	*13:103		*06:09	*06:09	*01:02	*01:02	*01:01	*02:01	SSO
731 Loewenthal, R	*13:02:01			*06						SBT, SSO
759 Lopez-Cepero	*13:02/23/34/39/73+		*03:01	*06:09		*01:02/06/08		*01:01	*02:01	RVSSO
23 Mah, Helen	*13:02	*13:02	*03:01	*06:09	*06:09	*01:02	*01:02	*01:01	*02:01	SSO, SSP
8029 Mani, Rama	*13		*+							P-SSP

B-CELL LINE Ter 480

CTR DIRNAME	DRB1	DRB1X	DRB3	DQB1	DQB1X	DQA1	DQA1X	DPB1	DPB1X	METHOD
206 McAlack-Hana	*13	*13	*03	*06	*06	*01	*01			RVSSOP
8042 Muncher,Lior	*13:02			*06:09						SSO,SSP
9001 Muncher_LR	*13			*06						SSO,SSP
3966 Permpikul&Ve	*13:02		*03:01	*06:09						P-SSP
2400 Phelan,Donna	*13:02		*03	*06:09		*01:02:01G		*01:01	*02:01	SSO,SBT,SSP
8001 Rao,Prakash	*13:02		*03:01	*06:09		*01		*01:01	*02:01	RVSSO,SSP
3753 Reed,Elaine	*13:02/67/103+	*13:02/67/103+	*03:01	*06:09	*06:09	*01:02	*01:02			SBT,SSO
3798 Reinsmoen,N	*13:02:01		*03:01	*06:09		*01:02:01G	*01:02+	*01:01	*02:01	SSO,SBT
3519 Renac,Virgi	*13:02		*03:01	*06:09		*01:02		*01:01	*02:01	SBT,P-SSP
1160 Rosen-Bronso	*13:02/128		*03:01	*06:09						SSP,SBT
793 Rubocki,Rona	*13		+	*06				*01:01	*02:01	SSP
4251 Schiller,J	*13:02	*13:02	*03:01	*06:09	*06:09	*01	*01	*01:01	*02:01	P-RVSSO,SBT
8068 Shanmugam,He	*13	*13	*01	*06	*06					P-SSP
746 Stamm,Luz	*13:02	*13:02	*03	*06:09	*06:09	*01	*01	*01:01	*02:01	SSO,SSP,SBT
747 Tiercy,Jean-	*13:02:01		*03:01	*06:09		*01:02:01G		*01:01:01	*02:01:02	SSO,SSP,SBT
5451 Tilanus,Marc	*13:02:01		*03:01	*06:09		*01:02:01		*01:01:01	*02:01:02	SBT
4021 Trachtenberg	*13		*03	*06:09		*01				SSO
5462 Turner,E.V.	*13:02:01		*03:01	*06:09				*01:01	*02:01/*123:01	SEQ,SSO,SSP
5642 Varnavidou-N	*13:02/99/109+		+	*06:09						P-SSP
797 Yabe,Hiromasa	*13:02			*06:09		*01:02				SSO,+SBT-DR
3511 Zeevi,Adrian	*13:02		*03:01	*06:09		*01:02		*01:01	*02:01	RVSSOP,SSP

CTR DIRNAME	DR13	DR52	DQ1	OTH1	OTH2
4492 Charron,D.	+	+	+		
910 Hahn,Amy B.	+	+	+		
54 Pancoska,Car	+	+	+		
793 Rubocki,Rona	+	+	DQ6		
8063 Shai,Isaac	+	+	DQ6	DR103,DR4	DR14,DQ5

B-CELL LINE Ter 480

71 DNA LABS

72 LABS REPORTING DRB1

DRB1*13	39%
DRB1*13:02	46%
DRB1*13:02:01	13%
DRB1*13:103	2%
DRB1*13	100% TOTAL

68 LABS REPORTING DQB1

DQB1*06	18%
DQB1*06:09	82%
DQB1*06	100% TOTAL

37 LABS REPORTING DQA1

DQA1*01	24%
DQA1*01:02	46%
DQA1*01:02:01	3%
DQA1*01:02:01G	27%
DQA1*01	100% TOTAL

47 LABS REPORTING DRB3

DRB3*+	15%
DRB3*03:01	74%
DRB3*03	11%

33 LABS REPORTING DPB1

DPB1*01	3%
DPB1*01:01	82%
DPB1*01:01:01	15%
DPB1*01	100% TOTAL
DPB1*02	3%
DPB1*02:01	79%
DPB1*02:01:02	15%
DPB1*02	97% TOTAL

5 SEROLOGY LABS

DR13	100%	DQ1	60%
		DQ6	40%
DR52	100%	DQ1	100% TOTAL

B-CELL LINE Ter 481

CTR DIRNAME	DRB1	DRB1X	DRB4	DQB1	DQB1X	DQA1	DQA1X	DPB1	DPB1X	METHOD
5488 Adams, Sharon	*04:04:01	*04:09	*01	*03:01:01	*03:02:01	*03:01	*03:03	*10:01	*20:01:01	SSO, SBT, SSP
4691 Ajlan, Abdula	*04:04/23/42	*04:09		*03:01/04/27+	*03:02					SSO
2332 Al-Awwami, M	*04:04/23	*04:09		*03:01/27-29+	*03:02/37	*03:01	*03:01:01G			RVSSO
8075 Al-Baz, Nabe	*04:04	*04:09		*03:02	*03:09					SSO, SSP
5133 Baker, Judy	*04:04:01	*04:09	*01	*03:01:01	*03:02:01					SBT, SSO
8038 Cao, Kai	*04:04:01	*04:09	*01:01+	*03:01:01	*03:02:01	*03:01	*03:01:01G	*10:01	*20:01:01	SSO, SSP, SBT
774 Cecka, J. Mich	*04:04	*04:09	*01:03+	*03:01/21/22+		*03:01	*03:03			SSP, SSOP
9916 Charlton, Ron	*04:04:01	*04:09	*01:03	*03:01/42/44	*03:02					SBT, SSP
4492 Charron, D.	*04:04/94N+	*04:09	*01:03	*03:01/35/36+	*03:02/37	*03:01	*03:03	*10:01	*20:01	P-SSO, SSP
8021 Clark, Brenda	*04:04/23	*04:09	*01	*03:01/27-29+	*03:02			*10:01	*20:01	P-SSP, RVSSO
3632 Colombe, Beth	*04:04	*04:09	*01:03	*03:01	*03:02	*03:01	*03:01:01G			SSP
5130 Costeas, Paul	*04:04	*04:09	*01:03	*03:01	*03:02	*03:01	*03:03			SSO, SBT, SSP
779 Daniel, Claud	*04	*04:09	*+	*03:01	*03:02	*03:01	*03	*10:01	*20:01	P-SSP, SSO
5219 Daniel, Dolly	*04	*04	*+	*03	*03					P-SSOP
8052 Del Pozo, Ana	*04:04/23/44+	*04:09		*03:01/27-29+	*03:02/32	*03:01	*03:01:01G			P-SSO
5891 Du, Keming	*04:04	*04:09		*03:01/04	*03:02/03					P-SBT
5214 Eckels/CPMC	*04	*04:09	*01	*03(DQ7)	*03(DQ8)	*03:01	*03	*10:01	*20:01	SSOP
3135 Enczmann, J.	*04:04	*04:09	*01:03	*03:01	*03:02			*10:01	*20:01	SBT, P-SSP
762 Fischer/Mayr	*04:04	*04:09	*01:03	*03:01/09/19+	*03:02	*03:01	*03:03	*10:01	*20:01	SSO, SSP, SBT
4079 Fort, Marylis	*04:04/23	*04:09		*03:01/27-29+	*03:02/37	*03:01	*03:01:01G			P-SSO
792 Gandhi, Manis	*04:04	*04:09	*01:03	*03:01	*03:02	*03:01	*03:03	*10:01	*20:01	SSO, SSP
910 Hahn, Amy B.	*04:04	*04:09	*01:03+	*03:01/21/22+	*03:02/32					SSP
810 Hamdi, Nuha	*04:04	*04:09	*01:01	*03:01	*03:02	*03:01	*03:01			SSO
4269 Hanau, Daniel	NT									SBT-DR, SSP
1461 Hidajat, M.	*04:04	*04:09	*01:03	*03:01	*03:02			*10:01	*20:01	SSO, SSP, SBT
2344 Hurley/Hartz	*04:04:01	*04:09		*03:01:01:01+	*03:02:01			*10:01	*20:01:01	SBT, SSO
771 Israel, Shosh	*04:04	*04:09		*03:01	*03:02					
9003 Israel_LR	*04			*03						SSO
794 Jaatinen, Tai	*04:04	*04:09	*01:03	*03:01	*03:02	*03:01:01G		*10:01	*20:01	SBT, SSO, SSP
859 Kamoun, Malek	*04:04	*04:09	*01:03	*03:01	*03:02	*03:01	*03:03	*10:01	*20:01	SBT, SSO, SSP
13 Kapoor/Park	*04:04	*04:09	*01:03	*03:01	*03:02					SSP
4337 Kim, Tai-Gyu	*04:04	*04:09		*03:01/09/19+	*03:02/32			*10:01	*20:01	SBT
1694 Kissel&Hess	*04		*+	*03:01	*03:02					SSP
168 Klein, Tirza	*04:04	*04:05		*03:01	*03:02					P-SSO, SSP
9000 Klein_LR	*04	*04		*03	*03					P-SSO, SSP
87 Land, Geoffre	*04:04	*04:09	*01:03	*03:01	*03:02	*03:01	*03:03	*10:01	*20:01	SBT, SSO, SSP
725 Lardy, N, M.	*04		*+	*03		*03				SSO, SSP
278 Lee, Jar-How	*04:04	*04:09	*01:03	*03:01	*03:02	*03:01	*03:01:01G	*10:01	*20:01	SSP, RVSSOP
5096 Lee, Sun-Ah	*04	*04								SSOP
640 Lee, Young K	*04:01/04/05+	*04:10/09+		*03:01:01G//+	*03:02:01G//+					P-SBT
6649 Lim, Young Ae	*04		*+							SSP
274 Lo, Raymundo	*04	*04:67		*03	*03:02	*03:01	*03	*37:01	*20:01	SSO
731 Loewenthal, R	*04:04:01	*04:09		*03	*03					SBT, SSO
759 Lopez-Cepero	*04:04/23/44+	*04:09	*01:01+	*03:01/27-29+	*03:02/37	*03:01:01G		*10:01	*20:01	RVSSO
23 Mah, Helen	*04:04	*04:09	*01:03	*03:01	*03:02	*03:01	*03	*10:01	*20:01	SSO, SSP
8029 Mani, Rama	*04	*04	*+	*03	*03					SSO
206 McAlack-Hana	*04	*04	*01	*03(DQ7)	*03(DQ8)	*03	*03			RVSSOP
8042 Muncher, Lior	*04:04	*04:09		*03:01	*03:02					SSO, SSP
9001 Muncher_LR	*04			*03						SSO, SSP
3966 Permpikul&Ve	*04	*04	*01:03	*03:01	*03:02					P-SSP
2400 Phelan, Donna	*04:04	*04:09	*01	*03:01	*03:02	*03:01:01G		*10:01	*20:01	SSO, SBT, SSP

B-CELL LINE Ter 481

CTR DIRNAME	DRB1	DRB1X	DRB4	DQB1	DQB1X	DQA1	DQA1X	DPB1	DPB1X	METHOD
8001 Rao,Prakash	*04:04	*04:09	*01:03/08	*03:01	*03:02	*03		*10:01	*20:01	RVSSO,SSP
3753 Reed,Elaine	*04:04	*04:09	*01:01+	*03:01	*03:02	*03:01	*03:01:01G			SBT,SSO
3798 Reinsmoen,N	*04:04:01	*04:09	*01:01+	*03:01/27-29+	*03:02/37	*03:01	*03:01:01G	*10:01	*20:01	SSO,SBT
3519 Renac,Virgi	*04:04	*04:09	*01:03	*03:01	*03:02	*03:01	*03:03	*10:01	*20:01	SBT,P-SSP
1160 Rosen-Bronso	*04		*01	*03						SSO,SSP
793 Rubocki,Rona	*04		*+	*03(DQ7)	*03(DQ8)			*10:01	*20:01	
4251 Schiller,J	*04:04	*04:09	*01:01+	*03:01	*03:02	*03	*03	*10:01	*20:01	P-RVSSO,SBT
8068 Shanmugam,He	*04	*04	*01	*03	*03					P-SSP
746 Stamm,Luz	*04:04	*04:09	*01	*03:01	*03:02	*03:01	*03	*10:01	*20:01	SSO,SSP,SBT
5451 Tilanus,Marc	*04:04:01	*04:09	*01:03:01+	*03:01:01	*03:02:01	*03:01:01	*03:03:01	*10:01	*20:01:01	SBT
4021 Trachtenberg	*04	*04	*01	*03	*03	*03	*03			SSO
5462 Turner,E.V.	*04:04	*04:09	*01:03	*03:01	*03:02			*10:01	*20:01	SEQ,SSO,SSP
797 Yabe,Hiomasa	*04:04	*04:09		*03:01/27/28+	*03:02	*03:01:01G				SSO,+SBT-DR
3511 Zeevi,Adrian	*04:04	*04:09	*01:03	*03:01	*03:02	*03:01	*03:03	*10:01	*20:01	RVSSOP,SSP

CTR DIRNAME	DR4	DR53	DQ7	DQ8	OTH1	OTH2
4492 Charron,D.	+	+	DQ3		DR10,DR14	DR52
910 Hahn,Amy B.	+	+	+	+		
4908 Kvam,Vonnett	+	+	DQ3			
54 Pancoska,Car	+	+	+	+		
793 Rubocki,Rona	+	+	+	DQ3		
8063 Shai,Isaac	+	+	+		DR13, DR52	

B-CELL LINE Ter 481 (Caucasian)

64 DNA LABS

64 LABS REPORTING DRB1
 DRB1*04 41%
 DRB1*04:04 47%
 DRB1*04:04:01 12%
 DRB1*04 100% TOTAL

DRB1*04 25%
 DRB1*04:05 2%
 DRB1*04:09 72%
 DRB1*04:67 1%
 DRB1*04 100% TOTAL

45 LABS REPORTING DRB4
 DRB4*+ 16%
 DRB4*01:01 2%
 DRB4*01:03 40%
 DRB4*01 42%

6 SEROLOGY LABS

DR4 100%
 DR53 100%

62 LABS REPORTING DQB1
 DQB1*03 50%
 DQB1*03:01 42%
 DQB1*03:01:01 6%
 DQB1*03:02 2%
 DQB1*03 100% TOTAL

DQB1*03 39%
 DQB1*03:02 52%
 DQB1*03:02:01 8%
 DQB1*03:09 1%
 DQB1*03 100% TOTAL

37 LABS REPORTING DQA1
 DQA1*03 15%
 DQA1*03:01 70%
 DQA1*03:01:01 3%
 DQA1*03:01:01G 12%
 DQA1*03 100% TOTAL

DQA1*03 29%
 DQA1*03:01 3%
 DQA1*03:03 30%
 DQA1*03:03:01 3%
 DQA1*03:01:01G 35%
 DQA1*03 100% TOTAL

29 LABS REPORTING DPB1
 DPB1*10:01 97%
 DPB1*20:01 86%
 DPB1*20:01:01 14%
 DPB1*20:01 100% TOTAL

DQ3 33%
 DQ7 67%
 DQ3 100% TOTAL
 DQ3 17%
 DQ8 33%
 DQ3 50% TOTAL

B-CELL LINE Ter 482

CTR	DIRNAME	DRB1	DRB1X	DRB4	DRB5	DQB1	DQB1X	DQA1	DQA1X	DPB1	DPB1X	METHOD
5488	Adams, Sharon	*04:10:01	*15:01	*01	*01:01	*04:02:01	*05:02:01	*01:02:01G	*03:03	*02:01:02	*05:01:01	SSO, SBT, SSP
4691	Ajlan, Abdula	*04:10	*15:01/35/46+			*04:02	*05:02					SSO
2332	Al-Awwami, M	*04:10	*15:01			*04:02	*05:02	*01:02:01G	*03:01:01G			RVSSO
8075	Al-Baz, Nabe	*04:10	*15:01			*04:02	*05:02					SSO, SSP
5133	Baker, Judy	*04:10	*15:01:01	*01	*01:01	*04:02:01	*05:02:01					SBT, SSO
8038	Cao, Kai	*04:10:01	*15:01	*01:01:01G	*01:01:01	*04:02:01	*05:02:01	*01:02	*03:01:01G	*02:01:02	*05:01	SSO, SSP, SBT
774	Cecka, J. Mich	*04:10	*15:01+	*01:03	*01:01	*04:02	*05:02/14	*01:02	*03:03			SSP, SSOP
9916	Charlton, Ron	*04:10:01	*15:01	*01:03	*01:01:01	*04:02	*05:02					SBT, SSP
4492	Charron, D.	*04:10	*15:01/51-53+	*01:03	*01:01	*04:02	*05:02/14	*01:02	*03:03	*02:01	*05:01	P-SSO, SSP
8021	Clark, Brenda	*04:10	*15:01	*01	*01/*02	*04:02	*05:02			*02:01	*05:01	P-SSP, RVSSO
3632	Colombe, Beth	*04:10	*15:01	*01:03	*01:01	*04:02	*05:02	*01:02:01G	*03:01:01G			SSP
5130	Costeas, Paul	*04:10	*15:01	*01:03	*01:01	*04:02	*05:02	*01:02	*03:03			SSP, SBT
779	Daniel, Claud	*04:10	*15	*01:01:01G	*01:01	*04:02	*05:02	*01	*03	*02:01	*05:01	P-SSP, SSO
5219	Daniel, Dolly	*04	*15	**	**	*04	*05					P-SSOP
8052	Del Pozo, Ana	*04:10	*15			*04:02	*05:02	*01:02	*03:01:01G			P-SSO
5891	Du, Keming	*04:04/10	*15:01/12			*04:02	*05:02					P-SBT
5214	Eckels/CPMC	*04:10	*15	*01	*01:01	*04:02	*05:02	*01	*03	*02:01	*05:01	SSOP
3135	Enczmann, J.	*04:10	*15:01	*01:03	*01:01	*04:02	*05:02			*02:01	*05:01	SBT, P-SSP
762	Fischer/Mayr	*04:10	*15:01	*01:03	*01:01	*04:02	*05:02	*01:02	*03:03	*02:01	*05:01	SSO, SSP, SBT
4079	Fort, Marylis	*04:10	*15:01			*04:02	*05:02	*01:02:01G	*03:01:01G			P-SSO
792	Gandhi, Manis	*04:10	*15:01	*01:03	*01:01	*04:02	*05:02	*01:02	*03:03	*02:01	*05:01	SSO, SSP
910	Hahn, Amy B.	*04:10	*15:01/33/45+	*01:03	*01:01	*04:02	*05:02/14					SSP
810	Hamdi, Nuha	*04:10	*15:01	*01:03	*01:01	*04:02	*05:02	*01:02	*03:01			SSO
4269	Hanau, Daniel	NT										SBT-DR, SSP
1461	Hidajat, M.	*04:10	*15:01	*01:03	*01:01	*04:02	*05:02			*02:01	*05:01	SSO, SSP, SBT
2344	Hurley/Hartz	*04:10:01	*15:01:01:01+			*04:02:01	*05:02:01+			*02:01:02	*05:01:01+	SBT, SSO
771	Israel, Shosh	*04:10	*15:01			*04:02	*05:02					
9003	Israel_LR	*04	*15			*04	*05					SSO
794	Jaatinen, Tai	*04:10	*15:01	*01:03	*01:01	*04:02	*05:02	*01:02:01G	*03:01:01G	*02:01	*05:01	SBT, SSO, SSP
859	Kamoun, Malek	*04:10	*15:01	*01:01:01G		*04:02	*05:02	*01:02:01G	*03:01:01G	*02:01	*05:01	SBT, SSO, SSP
13	Kapoor/Park	*04:10	*15:01	*01:03	*01:01	*04:02	*05:02					SSP
4337	Kim, Tai-Gyu	*04:10	*15:01			*04:02	*05:02/14			*02:01	*05:01+	SBT
1694	Kissel&Hess	*04	*15	**	**	*04:02	*05:02					SSP
168	Klein, Tirza	*04:10	*15:01			*04:02	*05:02					P-SSO, SSP
9000	Klein_LR	*04	*15			*04	*05					P-SSO, SSP
87	Land, Geoffre	*04:10	*15:01	*01:03	*01:01	*04:02	*05:02	*01:02	*03:03	*02:01	*05:01	SBT, SSO, SSP
725	Lardy, N, M.	*04	*15	**	**	*04	*05	*01	*03			SSO, SSP
278	Lee, Jar-How	*04:10	*15:01	*01:03	*01:01	*04:02	*05:02	*01:02:01G	*03:01:01G	*02:01	*05:01	SSP, RVSSOP
5096	Lee, Sun-Ah	*04	*15									SSOP
640	Lee, Young K	*04:10	*15:01			*04:02	*05:02					P-SBT
6649	Lim, Young Ae	*04	*15	**	**							SSP
274	Lo, Raymundo	*04:10	*15			*04:02	*04:04	*01:02	*03	*02:01	*05:01	SSO
731	Loewenthal, R	*04:10	*15:01:01			*04	*05					SBT, SSO
759	Lopez-Cepero	*04:10	*15:01/13/16+	*01:01:01G	*01:01	*04:02	*05:02	*01:02:01G	*03:01:01G	*02:01	*05:01	RVSSO
23	Mah, Helen	*04:10	*15:01	*01:03	*01:01	*04:02	*05:02	*01	*03	*02:01	*05:01	SSO, SSP
8029	Mani, Rama	*04	*15	**	**	*04	*05					SSO
206	McAlack-Hana	*04	*15	*01	*01	*04	*05	*01	*03			RVSSOP
8042	Muncher, Lior	*04:10	*15:01			*04:02	*05:02					SSO, SSP
9001	Muncher_LR	*04	*15			*04	*05					SSO, SSP
3966	Permpikul&Ve	*04:10	*15:01	*01:03	*01:01	*04:02	*05:02					P-SSP
2400	Phelan, Donna	*04:10	*15:01	*01	*01	*04:02	*05:02	*01:02:01G	*03:01:01G	*02:01	*05:01	SSO, SBT, SSP

B-CELL LINE Ter 482

CTR DIRNAME	DRB1	DRB1X	DRB4	DRB5	DQB1	DQB1X	DQA1	DQA1X	DPB1	DPB1X	METHOD
8001 Rao,Prakash	*04:10	*15:01	*01:03	*01:01	*04:02	*05:02	*01	*03	*02:01	*05:01	RVSSO,SSP
3753 Reed,Elaine	*04:04/10	*15:01/12/69	*01:01:01G	*01:01	*04:02	*05:02	*01:02:01G	*03:01:01G			SBT,SSO
3798 Reinsmoen,N	*04:10:01	*15:01	*01:01:01G	*01:01	*04:02	*05:02	*01:02:01G	*03:01:01G	*02:01	*05:01	SSO,SBT
3519 Renac,Virgi	*04:10	*15:01	*01:03	*01:01	*04:02	*05:02	*01:02	*03:03	*02:01	*05:01	SBT,P-SSP
1160 Rosen-Bronso	*04:10	*15	*01:03	*01:01	*04:02	*05:02					SSO,SSP
793 Rubocki,Rona	*04	*15	*+	*+	*04	*05			*02:01	*05:01	
4251 Schiller,J	*04:10	*15:01	*01:01:01G	*01:01	*04:02	*05:02	*01	*03	*02:01	*05:01:01G	P-RVSSO,SBT
8068 Shanmugam,He	*04	*15	*01	*01	*04	*05					P-SSP
746 Stamm,Luz	*04:10	*15:01	*01	*01	*04:02	*05:02	*01	*03	*02:01	*05:01	SSO,SSP,SBT
5451 Tilanus,Marc	*04:10:01	*15:01	*01:03:01	*01:01:01	*04:02:01	*05:02:01	*01:02:01	*03:03:01	*02:01:02	*05:01:01	SBT
4021 Trachtenberg	*04	*15	*01	*01	*04	*05	*01	*03			SSO
5462 Turner,E.V.	*04:10	*15:01	*01:03	*01:01	*04:02	*05:02			*02:01	*05:01	SEQ,SSO,SSP
797 Yabe,Hiomasa	*04:10	*15:01			*04:02	*05:02	*01:02	*03:01:01G			SSO,+SBT-DR
3511 Zeevi,Adrian	*04:10	*15:01	*01:03	*01:01	*04:02	*05:02	*01:02	*03:03	*02:01	*05:01	RVSSOP,SSP

CTR DIRNAME	DR4	DR15	DR53	DR51	DQ4	DQ1	OTH1	OTH2
4492 Charron,D.	+	+	+	+	+	+		
910 Hahn,Amy B.	+	+	+	+	+	+		
4908 Kvam,Vonnett	+		+			DQ5	DR103	DQ7
54 Pancoska,Car	+	+	+	+	+	+		
793 Rubocki,Rona	+	+	+	+	+	DQ5		
8063 Shai,Isaac	+	+	+		+	+	DR13	DR1

B-CELL LINE Ter 482

64 DNA LABS

64 LABS REPORTING DRB1

DRB1*04	24%
DRB1*04:10	67%
DRB1*04:10:01	9%
DRB1*04	100% TOTAL
DRB1*15	39%
DRB1*15:01	58%
DRB1*15:01:01	3%
DRB1*15	100% TOTAL

62 LABS REPORTING DQB1

DQB1*04	18%
DQB1*04:02	74%
DQB1*04:02:01	8%
DQB1*04	100% TOTAL
DQB1*05	26%
DQB1*05:02	66%
DQB1*05:02:01	6%
DQB1*05	98% TOTAL

34 LABS REPORTING DQA1

DQA1*01	27%
DQA1*01:02	38%
DQA1*01:02:01	3%
DQA1*01:02:01G	32%
DQA1*01	100% TOTAL
DQA1*03	29%
DQA1*03:01	3%
DQA1*03:03	27%
DQA1*03:03:01	3%
DQA1*03:01:01G	38%
DQA1*03	100% TOTAL

45 LABS REPORTING DRB4

DRB4*+	13%
DRB4*01:03	49%
DRB4*01:03:01	2%
DRB4*01:01:01G	17%
DRB4*01	20%

29 LABS REPORTING DPB1

DPB1*02:01	86%
DPB1*02:01:02	14%
DPB1*02	100% TOTAL
DPB1*05:01	83%
DPB1*05:01:01	7%
DPB1*05:01:01G	10%
DPB1*05	100% TOTAL

44 LABS REPORTING DRB5

DRB5*+	16%
DRB5*01:01	66%
DRB5*01:01:01	7%
DRB5*01	11%

6 SEROLOGY LABS

DR4	100%	DQ4	83%
DR15	100%	DQ1	67%
DR53	100%	DQ5	33%
DR51	67%	DQ1	100% TOTAL

**** Serum 1105 ****

Investigator	POS	%	B7	B27	Other
Claas, F.H.J.	25	+	+	+	
Esteves Kondo,	10	+	+		
Hogan, Patrick		+			B55
Suciu-Foca, Nic	36	+	+		B81
Watson, Narelle	26	+	+		B42

**** Serum 1106 ****

Investigator	POS	%	B55	B7	B42	B56	Other
	38	+	+	+		+	
	13	+		+	+		
	18	+	+	+			B81
	24	+	+	+			

**** Serum 1107 ****

Investigator	POS	%	B7	B42	Other
	54	+	+		B27,A68
	10	+			
	36	+	+		B81
	22	+	+		

**** Serum 1108 ****

Investigator	POS	%	B7	B27	B56	B55	Other
	38	+	+	+			
	20	+	+		+		B42
	18	+	+	+	+		B81
	33	+	+	+			B73

Method
STD
STD
STD
STD

**** Serum 1105 ****

Investigator	POS	%	B7	B55	B27	B81	Other
Askar, Medhat Z	17	+	+	+	+	+	
Lardy, N.M.	29	+	+	+			
McCluskey, Jame	20	+	+				

**** Serum 1106 ****

Investigator	POS	%	B55	B7	B56	B81	B41	B8	Other
	34	+	+	+	+	+	+	+	
	29	+	+	+					
	20	+	+						

**** Serum 1107 ****

Investigator	POS	%	B7	B27	B56	B81	Other
	17	+	+	+		+	
	33	+	+	+			
	13	+					

**** Serum 1108 ****

Investigator	POS	%	B27	B7	B56	B55	B81	Other
	29	+	+	+	+	+	+	
	25	+	+					
	48	+	+	+	+			

Method
EXT
EXT
EXT

*** Serum 1105 ***
5 typing Labs

Antigen	Consensus	Inclusion
B7	100%	92%
B27	60%	100%
B81	20%	100%
B42	20%	67%
B55	20%	20%

*** Serum 1106 ***
5 typing Labs

Antigen	Consensus	Inclusion
B55	80%	100%
B7	80%	72%
B42	60%	78%
B56	40%	100%
B81	20%	100%

*** Serum 1107 ***
5 typing Labs

Antigen	Consensus	Inclusion
B7	100%	94%
B42	40%	100%
A68	20%	100%
B27	20%	100%
B81	20%	100%

*** Serum 1108 ***
5 typing Labs

Antigen	Consensus	Inclusion
B7	100%	86%
B27	100%	71%
B56	40%	60%
B55	40%	57%
B73	20%	100%
B81	20%	100%
B42	20%	80%

Method: NIH-Std

*** Serum 1105 ***
3 typing Labs

Antigen	Consensus	Inclusion
B7	100%	100%
B55	100%	57%
B27	67%	71%
B81	33%	100%

*** Serum 1106 ***
3 typing Labs

Antigen	Consensus	Inclusion
B55	100%	100%
B7	100%	93%
B56	67%	100%
B81	33%	100%
B41	33%	67%
B8	33%	50%

*** Serum 1107 ***
3 typing Labs

Antigen	Consensus	Inclusion
B7	100%	100%
B27	67%	86%
B56	33%	100%
B81	33%	100%

*** Serum 1108 ***
3 typing Labs

Antigen	Consensus	Inclusion
B27	100%	100%
B7	100%	100%
B56	67%	100%
B55	67%	60%
B81	33%	100%

Method: NIH-Ext

**** Serum 1105 ****

Investigator	% POS	B27	B42	B7	B55	B56	B81	B48	B60	Other
Cecka, J. Micha	45	+	+	+	+	+	+	+	+	B61,B47,B8
Gandhi, Manish		+	+	+			+			
Hahn, Amy B. Ph	29	+	+	+	+	+				B37,B73
Mah, Helen	36	+	+	+	+	+		+	+	B54
Suciu-Foca, Nic	35	+	+	+			+			

**** Serum 1106 ****

Investigator	% POS	B42	B7	B27	B37	B41	B56	B55	B57	B8	B81	B48	B58	Other	Method
	53	+	+	+	+	+	+	+	+	+	+	+	+	B60,B47,B63>	AHG
		+	+	+	+	+	+	+	+						AHG
	67	+	+	+	+	+	+	+	+	+			+	B54	AHG
	53	+	+	+	+	+						+		B75,A1,A30	AHG
	40	+	+	+							+			B22	AHG

**** Serum 1107 ****

Investigator	% POS	B27	B42	B7	B48	B60	B61	B81	Other
Cecka, J. Micha	38	+	+	+	+	+	+	+	B13,B47,B55>
Gandhi, Manish		+	+	+	+	+		+	
Hahn, Amy B. Ph	44	+	+	+	+	+	+		B75
Mah, Helen	41	+	+	+	+	+	+		B54,B56
Suciu-Foca, Nic	40	+	+	+				+	B40

**** Serum 1108 ****

Investigator	% POS	B27	B7	B42	B55	B56	B48	B81	B54	B60	Other	Method
	35	+	+	+	+	+	+	+	+	+	B13,B47,B57	AHG
		+	+	+	+	+	+	+				AHG
	43	+	+	+	+	+	+	+	+		B73	AHG
	43	+	+	+	+	+	+	+	+	+	B61,A66	AHG
		+	+	+				+			B22	AHG

**** Serum 1105 ****

Investigator	% POS	B27	B42	B7	B8101	Other
Dunk, Arthur		+	+	+	+	

**** Serum 1106 ****

Investigator	% POS	B37	B41	B42	B55	B56	B7	B8	B8101	Other	Method
		+	+	+	+	+	+	+	+		OTH

**** Serum 1107 ****

Investigator	% POS	B7	B8101	Other
Dunk, Arthur		+	+	

**** Serum 1108 ****

Investigator	% POS	B27	B42	B56	B7	B8101	Other	Method
		+	+	+	+	+		OTH

*** Serum 1105 ***
5 typing Labs

Antigen	Consensus	Inclusion
B27	100%	100%
B42	100%	100%
B7	100%	100%
B55	60%	100%
B56	60%	100%
B81	60%	100%
B48	40%	100%
B60	40%	100%
B37	20%	100%
B54	20%	100%
B61	20%	100%
B73	20%	100%
B8	20%	100%
B47	20%	50%

Method: Antiglobulin

*** Serum 1106 ***
5 typing Labs

Antigen	Consensus	Inclusion
B42	100%	100%
B7	100%	100%
B27	80%	83%
B37	60%	100%
B41	60%	100%
B56	60%	100%
B55	60%	80%
B57	40%	100%
B8	40%	100%
B81	40%	100%
B48	40%	50%
B58	40%	33%
B22	20%	100%
B54	20%	100%
B75	20%	100%
A1	20%	71%
A30	20%	71%
B18	20%	57%
B47	20%	50%
B60	20%	50%
B63	20%	50%

*** Serum 1107 ***
5 typing Labs

Antigen	Consensus	Inclusion
B27	100%	100%
B42	100%	100%
B7	100%	100%
B48	80%	100%
B60	80%	89%
B61	60%	100%
B81	60%	100%
B13	20%	100%
B40	20%	100%
B47	20%	100%
B54	20%	100%
B56	20%	100%
B75	20%	100%
B55	20%	80%
B8	20%	60%
B41	20%	50%

*** Serum 1108 ***
5 typing Labs

Antigen	Consensus	Inclusion
B27	100%	100%
B7	100%	100%
B42	100%	89%
B55	80%	86%
B56	80%	67%
B48	60%	100%
B81	60%	100%
B54	40%	100%
B60	40%	100%
B22	20%	100%
B73	20%	100%
B61	20%	80%
B13	20%	75%
B57	20%	75%
A66	20%	50%
B47	20%	50%

*** Serum 1105 ***
1 typing Lab

Antigen	Consensus	Inclusion
	No consensus	

Method: Other

*** Serum 1106 ***
1 typing Lab

Antigen	Consensus	Inclusion
	No consensus	

*** Serum 1107 ***
1 typing Lab

Antigen	Consensus	Inclusion
	No consensus	

*** Serum 1108 ***
1 typing Lab

Antigen	Consensus	Inclusion
	No consensus	

**** Serum 1105 ****

Investigator	POS	B13	B42	B55	B60	B27	B54	B56	B61	B7	B8	B81	B41	B47	B48	B73	B18	B67	B82	CW2	B65	B37	B64	A66	B46	CW17	B51	CW15	A32	A6602	B57	B39	CW9	A74	B52	B38	Other	Method			
Al-Attas, Rabak		+	+	+	+	+	+	+	+	+	+	+	+	+	+	+	+	+	+	+	+	+	+	+	+	+	+	+	+	+	+	+	+	+	+	+	+	B8101,B2708,B8201 >	LMX		
Askar, Medhat 2	83	+	+	+	+	+	+	+	+	+	+	+	+	+	+	+	+	+	+	+	+	+	+	+	+	+	+	+	+	+	+	+	+	+	+	+	+	+	B8101,B2708,B8201 >	LMX	
Baker, Judy		+	+	+	+	+	+	+	+	+	+	+	+	+	+	+	+	+	+	+	+	+	+	+	+	+	+	+	+	+	+	+	+	+	+	+	+	+	+		LMX
Cecka, J. Micha	78	+	+	+	+	+	+	+	+	+	+	+	+	+	+	+	+	+	+	+	+	+	+	+	+	+	+	+	+	+	+	+	+	+	+	+	+	+	A80,CW10	LMX	
Dada, Ashraf ME		+	+	+	+	+	+	+	+	+	+	+	+	+	+	+	+	+	+	+	+	+	+	+	+	+	+	+	+	+	+	+	+	+	+	+	+	+	A80,B2708	LMX	
Dunn, Paul		+	+	+	+	+	+	+	+	+	+	+	+	+	+	+	+	+	+	+	+	+	+	+	+	+	+	+	+	+	+	+	+	+	+	+	+	+	A80,B2708	LMX	
Eckels/CPMC,		+	+	+	+	+	+	+	+	+	+	+	+	+	+	+	+	+	+	+	+	+	+	+	+	+	+	+	+	+	+	+	+	+	+	+	+	+	B2708	LMX	
Fort, Marylise		+	+	+	+	+	+	+	+	+	+	+	+	+	+	+	+	+	+	+	+	+	+	+	+	+	+	+	+	+	+	+	+	+	+	+	+	+	A80,B63,CW10	LMX	
Gandhi, Manish		+	+	+	+	+	+	+	+	+	+	+	+	+	+	+	+	+	+	+	+	+	+	+	+	+	+	+	+	+	+	+	+	+	+	+	+	+	A80,B63,CW10	LMX	
Hahn, Amy B. Ph	32	+	+	+	+	+	+	+	+	+	+	+	+	+	+	+	+	+	+	+	+	+	+	+	+	+	+	+	+	+	+	+	+	+	+	+	+	+	B78,B75,A80,B63 >	LMX	
Hamdi, Nuha	73	+	+	+	+	+	+	+	+	+	+	+	+	+	+	+	+	+	+	+	+	+	+	+	+	+	+	+	+	+	+	+	+	+	+	+	+	+		LMX	
Hardy, Steven F		+	+	+	+	+	+	+	+	+	+	+	+	+	+	+	+	+	+	+	+	+	+	+	+	+	+	+	+	+	+	+	+	+	+	+	+	+		LMX	
Harville, Terry		+	+	+	+	+	+	+	+	+	+	+	+	+	+	+	+	+	+	+	+	+	+	+	+	+	+	+	+	+	+	+	+	+	+	+	+	+	B2708	LMX	
Hermes, Mark		+	+	+	+	+	+	+	+	+	+	+	+	+	+	+	+	+	+	+	+	+	+	+	+	+	+	+	+	+	+	+	+	+	+	+	+	+		LMX	
Hogan, Patrick		+	+	+	+	+	+	+	+	+	+	+	+	+	+	+	+	+	+	+	+	+	+	+	+	+	+	+	+	+	+	+	+	+	+	+	+	+		LMX	
Holdsworth, Rhc		+	+	+	+	+	+	+	+	+	+	+	+	+	+	+	+	+	+	+	+	+	+	+	+	+	+	+	+	+	+	+	+	+	+	+	+	+	B75,A80,CW10	LMX	
JunHe,		+	+	+	+	+	+	+	+	+	+	+	+	+	+	+	+	+	+	+	+	+	+	+	+	+	+	+	+	+	+	+	+	+	+	+	+	+		LMX	
Klein, Tirza	26	+	+	+	+	+	+	+	+	+	+	+	+	+	+	+	+	+	+	+	+	+	+	+	+	+	+	+	+	+	+	+	+	+	+	+	+	B40,B22,CW18	LMX		
Loewenthal MD,	94	+	+	+	+	+	+	+	+	+	+	+	+	+	+	+	+	+	+	+	+	+	+	+	+	+	+	+	+	+	+	+	+	+	+	+	+	+	B44,B53,B45,A25 >	LMX	
Mah, Helen		+	+	+	+	+	+	+	+	+	+	+	+	+	+	+	+	+	+	+	+	+	+	+	+	+	+	+	+	+	+	+	+	+	+	+	+	+	B78,B75,A80,B63 >	LMX	
McAlack-Hanau,	65	+	+	+	+	+	+	+	+	+	+	+	+	+	+	+	+	+	+	+	+	+	+	+	+	+	+	+	+	+	+	+	+	+	+	+	+	+		LMX	
McCluskey, Jame	23	+	+	+	+	+	+	+	+	+	+	+	+	+	+	+	+	+	+	+	+	+	+	+	+	+	+	+	+	+	+	+	+	+	+	+	+	+	B703,B2708	LMX	
Meyer, Pieter W	76	+	+	+	+	+	+	+	+	+	+	+	+	+	+	+	+	+	+	+	+	+	+	+	+	+	+	+	+	+	+	+	+	+	+	+	+	+	A24,A25,A26,A30 >	LMX	
Pais, Maria Lui		+	+	+	+	+	+	+	+	+	+	+	+	+	+	+	+	+	+	+	+	+	+	+	+	+	+	+	+	+	+	+	+	+	+	+	+	+	CW4,CW6,A24,B78 >	LMX	
Pancoska, Carol		+	+	+	+	+	+	+	+	+	+	+	+	+	+	+	+	+	+	+	+	+	+	+	+	+	+	+	+	+	+	+	+	+	+	+	+	+		LMX	
Permpikul, Vejk	16	+	+	+	+	+	+	+	+	+	+	+	+	+	+	+	+	+	+	+	+	+	+	+	+	+	+	+	+	+	+	+	+	+	+	+	+	+		LMX	
Pham, Tabary/ R	45	+	+	+	+	+	+	+	+	+	+	+	+	+	+	+	+	+	+	+	+	+	+	+	+	+	+	+	+	+	+	+	+	+	+	+	+	+	B2708	LMX	
Ramon, Daniel F		+	+	+	+	+	+	+	+	+	+	+	+	+	+	+	+	+	+	+	+	+	+	+	+	+	+	+	+	+	+	+	+	+	+	+	+	+	B2708,B8201	LMX	
Rosen-Bronson,	71	+	+	+	+	+	+	+	+	+	+	+	+	+	+	+	+	+	+	+	+	+	+	+	+	+	+	+	+	+	+	+	+	+	+	+	+	+		LMX	
Suciu-Foca, Nic		+	+	+	+	+	+	+	+	+	+	+	+	+	+	+	+	+	+	+	+	+	+	+	+	+	+	+	+	+	+	+	+	+	+	+	+	+	B8101,B8201	LMX	
Turner, E.V. Ph		+	+	+	+	+	+	+	+	+	+	+	+	+	+	+	+	+	+	+	+	+	+	+	+	+	+	+	+	+	+	+	+	+	+	+	+	+		LMX	
Vather, Nelson/		+	+	+	+	+	+	+	+	+	+	+	+	+	+	+	+	+	+	+	+	+	+	+	+	+	+	+	+	+	+	+	+	+	+	+	+	+	A80	LMX	
Vidan-Jeras, Bl	23	+	+	+	+	+	+	+	+	+	+	+	+	+	+	+	+	+	+	+	+	+	+	+	+	+	+	+	+	+	+	+	+	+	+	+	+	+		LMX	

**** Serum 1106 ****

Investigator	POS	B42	B54	B55	B56	B57	B7	A29	B27	B60	B73	B18	B37	B41	B58	B63	B8	B81	CW15	CW2	B67	CW17	CW18	CW5	CW1	A2	B48	CW6	A32	A43	A74	B52	B59	B82	A25	A33	Other	Method						
Al-Attas, Rabak		+	+	+	+	+	+	+	+	+	+	+	+	+	+	+	+	+	+	+	+	+	+	+	+	+	+	+	+	+	+	+	+	+	+	+	+	CW4,A11,A66,B51 >	LMX					
Askar, Medhat Z	100	+	+	+	+	+	+	+	+	+	+	+	+	+	+	+	+	+	+	+	+	+	+	+	+	+	+	+	+	+	+	+	+	+	+	+	+	+	CW4,A203,B62,B49 >	LMX				
Baker, Judy		+	+	+	+	+	+	+	+	+	+	+	+	+	+	+	+	+	+	+	+	+	+	+	+	+	+	+	+	+	+	+	+	+	+	+	+	+	+	CW4,A11,A66,A34 >	LMX			
Cecka, J. Micha	96	+	+	+	+	+	+	+	+	+	+	+	+	+	+	+	+	+	+	+	+	+	+	+	+	+	+	+	+	+	+	+	+	+	+	+	+	+	+	A11,A66,B62,B44 >	LMX			
Dada, Ashraf ME		+	+	+	+	+	+	+	+	+	+	+	+	+	+	+	+	+	+	+	+	+	+	+	+	+	+	+	+	+	+	+	+	+	+	+	+	+	+	+	CW4,A11,A66,B62 >	LMX		
Dunn, Paul		+	+	+	+	+	+	+	+	+	+	+	+	+	+	+	+	+	+	+	+	+	+	+	+	+	+	+	+	+	+	+	+	+	+	+	+	+	+	+	CW4,A11,A203,A66 >	LMX		
Eckels/CPMC,		+	+	+	+	+	+	+	+	+	+	+	+	+	+	+	+	+	+	+	+	+	+	+	+	+	+	+	+	+	+	+	+	+	+	+	+	+	+	+	A11,A34,A30,A31 >	LMX		
Fort, Marylise		+	+	+	+	+	+	+	+	+	+	+	+	+	+	+	+	+	+	+	+	+	+	+	+	+	+	+	+	+	+	+	+	+	+	+	+	+	+	+	CW4,A11,A34,A30 >	LMX		
Gandhi, Manish		+	+	+	+	+	+	+	+	+	+	+	+	+	+	+	+	+	+	+	+	+	+	+	+	+	+	+	+	+	+	+	+	+	+	+	+	+	+	+	CW4,A11,A24,B61 >	LMX		
Hahn, Amy B. Ph	69	+	+	+	+	+	+	+	+	+	+	+	+	+	+	+	+	+	+	+	+	+	+	+	+	+	+	+	+	+	+	+	+	+	+	+	+	+	+	+	CW4,A11,A66,B62 >	LMX		
Hamdi, Nuha	89	+	+	+	+	+	+	+	+	+	+	+	+	+	+	+	+	+	+	+	+	+	+	+	+	+	+	+	+	+	+	+	+	+	+	+	+	+	+	+	CW4,A11,A66,B62 >	LMX		
Hardy, Steven F		+	+	+	+	+	+	+	+	+	+	+	+	+	+	+	+	+	+	+	+	+	+	+	+	+	+	+	+	+	+	+	+	+	+	+	+	+	+	+	CW4,A11,A66,A34 >	LMX		
Harville, Terry		+	+	+	+	+	+	+	+	+	+	+	+	+	+	+	+	+	+	+	+	+	+	+	+	+	+	+	+	+	+	+	+	+	+	+	+	+	+	+	+	CW4,A11,A66,B51 >	LMX	
Hermes, Mark		+	+	+	+	+	+	+	+	+	+	+	+	+	+	+	+	+	+	+	+	+	+	+	+	+	+	+	+	+	+	+	+	+	+	+	+	+	+	+	+	CW4,A11,A66,B62 >	LMX	
Hogan, Patrick		+	+	+	+	+	+	+	+	+	+	+	+	+	+	+	+	+	+	+	+	+	+	+	+	+	+	+	+	+	+	+	+	+	+	+	+	+	+	+	+	CW4,A11,A26	LMX	
Holdsworth, Rhc		+	+	+	+	+	+	+	+	+	+	+	+	+	+	+	+	+	+	+	+	+	+	+	+	+	+	+	+	+	+	+	+	+	+	+	+	+	+	+	+	CW4,A11,A66,B62 >	LMX	
JunHe,		+	+	+	+	+	+	+	+	+	+	+	+	+	+	+	+	+	+	+	+	+	+	+	+	+	+	+	+	+	+	+	+	+	+	+	+	+	+	+	+	A11,A30,A31,A68 >	LMX	
Klein, Tirza	39	+	+	+	+	+	+	+	+	+	+	+	+	+	+	+	+	+	+	+	+	+	+	+	+	+	+	+	+	+	+	+	+	+	+	+	+	+	+	+	+	CW4,A11,A66,B22 >	LMX	
Loewenthal MD,	86	+	+	+	+	+	+	+	+	+	+	+	+	+	+	+	+	+	+	+	+	+	+	+	+	+	+	+	+	+	+	+	+	+	+	+	+	+	+	+	+	B44,A26,A23,A68 >	LMX	
Mah, Helen		+	+	+	+	+	+	+	+	+	+	+	+	+	+	+	+	+	+	+	+	+	+	+	+	+	+	+	+	+	+	+	+	+	+	+	+	+	+	+	+	+	CW4,A203,B61,B78 >	LMX
McAlack-Hanau,	79	+	+	+	+	+	+	+	+	+	+	+	+	+	+	+	+	+	+	+	+	+	+	+	+	+	+	+	+	+	+	+	+	+	+	+	+	+	+	+	+	B64,B65	LMX	
McCluskey, Jame	30	+	+	+	+	+	+	+	+	+	+	+	+	+	+	+	+	+	+	+	+	+	+	+	+	+	+	+	+	+	+	+	+	+	+	+	+	+	+	+	+	CW403,A66,B703,A26 >	LMX	
Meyer, Pieter W	82																																								B15,B49,A26,A30 >	LMX		
Pais, Maria Lui		+	+	+	+	+	+	+	+	+	+	+	+	+	+	+	+	+	+	+	+	+	+	+	+	+	+	+	+	+	+	+	+	+	+	+	+	+	+	+	+	+	CW4,A11,A24,B61 >	LMX
Pancoska, Carol	72	+	+	+	+	+	+	+	+	+	+	+	+	+	+	+	+	+	+	+	+	+	+	+	+	+	+	+	+	+	+	+	+	+	+	+	+	+	+	+	+	CW4,A11,A66,A34 >	LMX	
Permpikul, Vejk	38	+	+	+	+	+	+	+	+	+	+	+	+	+	+	+	+	+	+	+	+	+	+	+	+	+	+	+	+	+	+	+	+	+	+	+	+	+	+	+	+	+	A24,A23	LMX
Pham, Tabary/ R	84	+	+	+	+	+	+	+	+	+	+	+	+	+	+	+	+	+	+	+	+	+	+	+	+	+	+	+	+	+	+	+	+	+	+	+	+	+	+	+	+	+	CW4,B62,B49,B50 >	LMX
Ramon, Daniel F		+	+	+	+	+	+	+	+	+	+	+	+	+	+	+	+	+	+	+	+	+	+	+	+	+	+	+	+	+	+	+	+	+	+	+	+	+	+	+	+	+	CW4,A203,A30,A31 >	LMX
Rosen-Bronson,	97	+	+	+	+	+	+	+	+	+	+	+	+	+	+	+	+	+	+	+	+	+	+	+	+	+	+	+	+	+	+	+	+	+	+	+	+	+	+	+	+	+	CW4,A11,A66,B62 >	LMX
Suciu-Foca, Nic		+	+	+	+	+	+	+	+	+	+	+	+	+	+	+	+	+	+	+	+	+	+	+	+	+	+	+	+	+	+	+	+	+	+	+	+	+	+	+	+	+	CW4,B49,B51,A34 >	LMX
Turner, E.V. Ph		+	+	+	+	+	+	+	+	+	+	+	+	+	+	+	+	+	+	+	+	+	+	+	+	+	+	+	+	+	+	+	+	+	+	+	+	+	+	+	+	+	CW4,B65,CW14	LMX
Vather, Nelson/		+	+	+	+	+	+	+	+	+	+	+	+	+	+	+	+	+	+	+	+	+	+	+	+	+	+	+	+	+	+	+	+	+	+	+	+	+	+	+	+	+	CW4,A11,A66,B78 >	LMX
Vidan-Jeras, Bl	60	+	+	+	+	+	+	+	+	+	+	+	+	+	+	+	+	+	+	+	+	+	+	+	+	+	+	+	+	+	+	+	+	+	+	+	+	+	+	+	+	+	CW4,A11,A66,B62 >	LMX

**** Serum 1107 ****

Investigator	% POS	B42	B60	B81	A24	A3	B13	B27	B47	B48	B55	B61	B7	B8	A80	B54	B56	B73	B67	B82	CW2	B41	A23	A36	A1	A11	A66	B57	A6602	CW17	B2708	CW1	CW14	A32	A2403	Other	Method			
Al-Attas, Rabak		+	+	+	+	+	+	+	+	+	+	+	+	+	+	+	+	+	+	+	+	+	+	+	+	+	+	+	+	+	+	+	+	+	+	+	A1101,A1102,B8201	LMX		
Askar, Medhat Z	86	+	+	+	+	+	+	+	+	+	+	+	+	+	+	+	+	+	+	+	+	+	+	+	+	+	+	+	+	+	+	+	+	+	+	+		LMX		
Baker, Judy		+	+	+	+	+	+	+	+	+	+	+	+	+	+	+	+	+	+	+	+	+	+	+	+	+	+	+	+	+	+	+	+	+	+	+		LMX		
Cecka, J. Micha	87	+	+	+	+	+	+	+	+	+	+	+	+	+	+	+	+	+	+	+	+	+	+	+	+	+	+	+	+	+	+	+	+	+	+	+		LMX		
Dada, Ashraf ME		+	+	+	+	+	+	+	+	+	+	+	+	+	+	+	+	+	+	+	+	+	+	+	+	+	+	+	+	+	+	+	+	+	+	+	+		LMX	
Dunn, Paul		+	+	+	+	+	+	+	+	+	+	+	+	+	+	+	+	+	+	+	+	+	+	+	+	+	+	+	+	+	+	+	+	+	+	+	+	B65,B37,CW7,A1101 >	LMX	
Eckels/CPMC,		+	+	+	+	+	+	+	+	+	+	+	+	+	+	+	+	+	+	+	+	+	+	+	+	+	+	+	+	+	+	+	+	+	+	+	+		LMX	
Fort, Marylise		+	+	+	+	+	+	+	+	+	+	+	+	+	+	+	+	+	+	+	+	+	+	+	+	+	+	+	+	+	+	+	+	+	+	+	+		LMX	
Gandhi, Manish		+	+	+	+	+	+	+	+	+	+	+	+	+	+	+	+	+	+	+	+	+	+	+	+	+	+	+	+	+	+	+	+	+	+	+	+	A25,B65,B63,B58 >	LMX	
Hahn, Amy B. Ph	35	+	+	+	+	+	+	+	+	+	+	+	+	+	+	+	+	+	+	+	+	+	+	+	+	+	+	+	+	+	+	+	+	+	+	+		LMX		
Hamdi, Nuha	71	+	+	+	+	+	+	+	+	+	+	+	+	+	+	+	+	+	+	+	+	+	+	+	+	+	+	+	+	+	+	+	+	+	+	+	B17	LMX		
Hardy, Steven F		+	+	+	+	+	+	+	+	+	+	+	+	+	+	+	+	+	+	+	+	+	+	+	+	+	+	+	+	+	+	+	+	+	+	+	+		LMX	
Harville, Terry		+	+	+	+	+	+	+	+	+	+	+	+	+	+	+	+	+	+	+	+	+	+	+	+	+	+	+	+	+	+	+	+	+	+	+	+		LMX	
Hermes, Mark		+	+	+	+	+	+	+	+	+	+	+	+	+	+	+	+	+	+	+	+	+	+	+	+	+	+	+	+	+	+	+	+	+	+	+	+		LMX	
Hogan, Patrick		+	+	+	+	+	+	+	+	+	+	+	+	+	+	+	+	+	+	+	+	+	+	+	+	+	+	+	+	+	+	+	+	+	+	+	+		LMX	
Holdsworth, Rhc		+	+	+	+	+	+	+	+	+	+	+	+	+	+	+	+	+	+	+	+	+	+	+	+	+	+	+	+	+	+	+	+	+	+	+	+	B65,B63	LMX	
JunHe,		+	+	+	+	+	+	+	+	+	+	+	+	+	+	+	+	+	+	+	+	+	+	+	+	+	+	+	+	+	+	+	+	+	+	+	+		LMX	
Klein, Tirza	30	+	+	+	+	+	+	+	+	+	+	+	+	+	+	+	+	+	+	+	+	+	+	+	+	+	+	+	+	+	+	+	+	+	+	+	B40,B22	LMX		
Loewenthal MD,	76	+	+	+	+	+	+	+	+	+	+	+	+	+	+	+	+	+	+	+	+	+	+	+	+	+	+	+	+	+	+	+	+	+	+	+	B45,A25,A26,B59 >	LMX		
Mah, Helen		+	+	+	+	+	+	+	+	+	+	+	+	+	+	+	+	+	+	+	+	+	+	+	+	+	+	+	+	+	+	+	+	+	+	+	+	A25,A74,B64,B65 >	LMX	
McAlack-Hanau,	66	+	+	+	+	+	+	+	+	+	+	+	+	+	+	+	+	+	+	+	+	+	+	+	+	+	+	+	+	+	+	+	+	+	+	+	+		LMX	
McCluskey, Jame	30	+	+	+	+	+	+	+	+	+	+	+	+	+	+	+	+	+	+	+	+	+	+	+	+	+	+	+	+	+	+	+	+	+	+	+	+	B703,A1101,A1102	LMX	
Meyer, Pieter W	82	+	+	+	+	+	+	+	+	+	+	+	+	+	+	+	+	+	+	+	+	+	+	+	+	+	+	+	+	+	+	+	+	+	+	+	+	CW6,B40,B58,CW7	LMX	
Pais, Maria Lui		+	+	+	+	+	+	+	+	+	+	+	+	+	+	+	+	+	+	+	+	+	+	+	+	+	+	+	+	+	+	+	+	+	+	+	+	CW4,CW6,A30,A68 >	LMX	
Pancoska, Carol	37	+	+	+	+	+	+	+	+	+	+	+	+	+	+	+	+	+	+	+	+	+	+	+	+	+	+	+	+	+	+	+	+	+	+	+	+		LMX	
Permpikul, Vejk	18	+	+	+	+	+	+	+	+	+	+	+	+	+	+	+	+	+	+	+	+	+	+	+	+	+	+	+	+	+	+	+	+	+	+	+	+		LMX	
Pham, Tabary/ R	40	+	+	+	+	+	+	+	+	+	+	+	+	+	+	+	+	+	+	+	+	+	+	+	+	+	+	+	+	+	+	+	+	+	+	+	+	A1101,A1102	LMX	
Ramon, Daniel F		+	+	+	+	+	+	+	+	+	+	+	+	+	+	+	+	+	+	+	+	+	+	+	+	+	+	+	+	+	+	+	+	+	+	+	+	+	B8201	LMX
Rosen-Bronson,	81	+	+	+	+	+	+	+	+	+	+	+	+	+	+	+	+	+	+	+	+	+	+	+	+	+	+	+	+	+	+	+	+	+	+	+	+	+		LMX
Suciu-Foca, Nic		+	+	+	+	+	+	+	+	+	+	+	+	+	+	+	+	+	+	+	+	+	+	+	+	+	+	+	+	+	+	+	+	+	+	+	+	+	B8101,B8201	LMX
Turner, E.V. Ph		+	+	+	+	+	+	+	+	+	+	+	+	+	+	+	+	+	+	+	+	+	+	+	+	+	+	+	+	+	+	+	+	+	+	+	+	+		LMX
Vather, Nelson/		+	+	+	+	+	+	+	+	+	+	+	+	+	+	+	+	+	+	+	+	+	+	+	+	+	+	+	+	+	+	+	+	+	+	+	+	+		LMX
Vidan-Jeras, Bl	36	+	+	+	+	+	+	+	+	+	+	+	+	+	+	+	+	+	+	+	+	+	+	+	+	+	+	+	+	+	+	+	+	+	+	+	+	+		LMX

**** Serum 1108 ****

Investigator	POS	%	B42	B54	B55	B60	B61	B73	B47	B63	B7	B81	B13	B27	B48	B56	B67	B82	B57	CW2	CW15	CW9	B46	CW10	CW1	A66	CW14	A6602	CW16	A25	B2708	B64	A32	Other	Method			
Al-Attas, Rabak			+	+	+	+	+	+	+	+	+	+	+	+	+	+	+	+	+	+	+	+	+	+	+	+	+	+	+	+	+				LMX			
Askar, Medhat Z	55		+	+	+	+	+	+	+	+	+	+	+	+	+	+	+	+	+	+	+	+	+	+	+	+	+	+	+	+	+			B8101,B8201	LMX			
Baker, Judy			+	+	+	+	+	+	+	+	+	+	+	+	+	+	+	+	+	+	+	+	+	+	+	+	+	+	+	+	+	+				LMX		
Cecka, J. Micha	64		+	+	+	+	+	+	+	+	+	+	+	+	+	+	+	+	+	+	+	+	+	+	+	+	+	+	+	+	+	+				LMX		
Dada, Ashraf ME			+	+	+	+	+	+	+	+	+	+	+	+	+	+	+	+	+	+	+	+	+	+	+	+	+	+	+	+	+	+				LMX		
Dunn, Paul			+	+	+	+	+	+	+	+	+	+	+	+	+	+	+	+	+	+	+	+	+	+	+	+	+	+	+	+	+	+	+				LMX	
Eckels/CPMC,			+	+	+	+	+	+	+	+	+	+	+	+	+	+	+	+	+	+	+	+	+	+	+	+	+	+	+	+	+	+	+				LMX	
Fort, Marylise			+	+	+	+	+	+	+	+	+	+	+	+	+	+	+	+	+	+	+	+	+	+	+	+	+	+	+	+	+	+	+				LMX	
Gandhi, Manish			+	+	+	+	+	+	+	+	+	+	+	+	+	+	+	+	+	+	+	+	+	+	+	+	+	+	+	+	+	+	+	+	B58		LMX	
Hahn, Amy B. Ph	31		+	+	+	+	+	+	+	+	+	+	+	+	+	+	+	+	+	+	+	+	+	+	+	+	+	+	+	+	+	+				LMX		
Hamdi, Nuha	65		+	+	+	+	+	+	+	+	+	+	+	+	+	+	+	+	+	+	+	+	+	+	+	+	+	+	+	+	+	+				LMX		
Hardy, Steven F			+	+	+	+	+	+	+	+	+	+	+	+	+	+	+	+	+	+	+	+	+	+	+	+	+	+	+	+	+	+				LMX		
Harville, Terry			+	+	+	+	+	+	+	+	+	+	+	+	+	+	+	+	+	+	+	+	+	+	+	+	+	+	+	+	+	+	+				LMX	
Hermes, Mark			+	+	+	+	+	+	+	+	+	+	+	+	+	+	+	+	+	+	+	+	+	+	+	+	+	+	+	+	+	+	+				LMX	
Hogan, Patrick			+	+	+	+	+	+	+	+	+	+	+	+	+	+	+	+	+	+	+	+	+	+	+	+	+	+	+	+	+	+	+	+	B65		LMX	
Holdsworth, Rhc			+	+	+	+	+	+	+	+	+	+	+	+	+	+	+	+	+	+	+	+	+	+	+	+	+	+	+	+	+	+	+	+				LMX
JunHe,			+	+	+	+	+	+	+	+	+	+	+	+	+	+	+	+	+	+	+	+	+	+	+	+	+	+	+	+	+	+	+				LMX	
Klein, Tirza	21		+	+	+	+	+	+	+	+	+	+	+	+	+	+	+	+	+	+	+	+	+	+	+	+	+	+	+	+	+	+			B40,B22	LMX		
Loewenthal MD,	58		+	+	+	+	+	+	+	+	+	+	+	+	+	+	+	+	+	+	+	+	+	+	+	+	+	+	+	+	+	+	+	+	+	B44,B45,A26,B77 >	LMX	
Mah, Helen			+	+	+	+	+	+	+	+	+	+	+	+	+	+	+	+	+	+	+	+	+	+	+	+	+	+	+	+	+	+	+	+	+	B58,B41,B8201	LMX	
McAlack-Hanau,	52		+	+	+	+	+	+	+	+	+	+	+	+	+	+	+	+	+	+	+	+	+	+	+	+	+	+	+	+	+	+	+				LMX	
McCluskey, Jame	22		+	+	+	+	+	+	+	+	+	+	+	+	+	+	+	+	+	+	+	+	+	+	+	+	+	+	+	+	+	+	+			B703,B65,B38	LMX	
Meyer, Pieter W	64		+	+	+	+	+	+	+	+	+	+	+	+	+	+	+	+	+	+	+	+	+	+	+	+	+	+	+	+	+	+	+	+	A2,B40,B58,CW7 >	LMX		
Pais, Maria Lui			+	+	+	+	+	+	+	+	+	+	+	+	+	+	+	+	+	+	+	+	+	+	+	+	+	+	+	+	+	+	+	+	+	CW4,CW6,B51,B52 >	LMX	
Pancoska, Carol	33		+	+	+	+	+	+	+	+	+	+	+	+	+	+	+	+	+	+	+	+	+	+	+	+	+	+	+	+	+	+	+				LMX	
Permpikul, Vejk	36		+	+	+	+	+	+	+	+	+	+	+	+	+	+	+	+	+	+	+	+	+	+	+	+	+	+	+	+	+	+	+			A34	LMX	
Pham, Tabary/ R	51		+	+	+	+	+	+	+	+	+	+	+	+	+	+	+	+	+	+	+	+	+	+	+	+	+	+	+	+	+	+	+	+				LMX
Ramon, Daniel F			+	+	+	+	+	+	+	+	+	+	+	+	+	+	+	+	+	+	+	+	+	+	+	+	+	+	+	+	+	+	+	+			B8201	LMX
Rosen-Bronson,	58		+	+	+	+	+	+	+	+	+	+	+	+	+	+	+	+	+	+	+	+	+	+	+	+	+	+	+	+	+	+	+	+				LMX
Suciu-Foca, Nic			+	+	+	+	+	+	+	+	+	+	+	+	+	+	+	+	+	+	+	+	+	+	+	+	+	+	+	+	+	+	+	+			B8101,B8201	LMX
Turner, E.V. Ph			+	+	+	+	+	+	+	+	+	+	+	+	+	+	+	+	+	+	+	+	+	+	+	+	+	+	+	+	+	+	+	+				LMX
Vather, Nelson/			+	+	+	+	+	+	+	+	+	+	+	+	+	+	+	+	+	+	+	+	+	+	+	+	+	+	+	+	+	+	+	+				LMX
Vidan-Jeras, Bl	28		+	+	+	+	+	+	+	+	+	+	+	+	+	+	+	+	+	+	+	+	+	+	+	+	+	+	+	+	+	+	+	+				LMX

*** Serum 1105 ***
33 typing Labs

Antigen	Consensus	Inclusion
B13	97%	100%
B42	97%	100%
B55	97%	100%
B60	97%	100%
B27	94%	100%
B54	94%	100%
B56	94%	100%
B61	94%	100%
B7	94%	100%
B8	94%	100%
B81	94%	100%
B41	91%	100%
B47	91%	100%
B48	91%	100%
B73	91%	100%
B18	88%	100%
B67	88%	100%
B82	79%	100%
CW2	79%	100%
B65	70%	100%
B37	61%	100%
B64	55%	100%
A66	55%	67%
B46	52%	100%
CW17	52%	100%
B51	48%	75%
CW15	45%	100%
A32	39%	100%
A6602	39%	100%
B57	39%	100%
B39	33%	100%
CW9	33%	100%
A74	30%	100%
B52	30%	100%
B38	27%	100%
A80	24%	100%
B2708	24%	100%
CW10	18%	100%

*** Serum 1106 ***
33 typing Labs

Antigen	Consensus	Inclusion
B42	97%	100%
B54	97%	100%
B55	97%	100%
B56	97%	100%
B57	97%	100%
B7	97%	100%
A29	94%	100%
B27	94%	100%
B60	94%	100%
B73	94%	100%
B18	91%	100%
B37	91%	100%
B41	91%	100%
B58	91%	100%
B63	91%	100%
B8	91%	100%
B81	91%	100%
CW15	91%	100%
CW2	91%	89%
B67	88%	100%
CW17	88%	100%
CW18	88%	100%
CW5	88%	100%
CW1	88%	82%
A2	85%	100%
B48	85%	100%
CW6	85%	100%
A32	82%	100%
A43	82%	100%
A74	82%	100%
B52	82%	100%
B59	82%	100%
B82	82%	100%
A25	79%	100%
A33	79%	100%
A68	79%	100%
B65	79%	100%
CW14	79%	100%
A30	79%	91%
B64	76%	100%
CW4	76%	100%
A31	73%	100%
B46	73%	100%
A34	70%	100%
A11	67%	93%
A66	58%	100%
A26	55%	100%

*** Serum 1107 ***
33 typing Labs

Antigen	Consensus	Inclusion
B42	100%	100%
B60	97%	100%
B81	97%	100%
A24	94%	100%
A3	94%	100%
B13	94%	100%
B27	94%	100%
B47	94%	100%
B48	94%	100%
B55	94%	100%
B61	94%	100%
B7	94%	100%
B8	94%	100%
A80	91%	100%
B54	91%	100%
B56	91%	100%
B73	91%	100%
B67	85%	100%
B82	82%	100%
CW2	82%	100%
B41	76%	100%
A23	73%	100%
A36	70%	100%
A1	67%	91%
A11	64%	100%
A66	55%	67%
B57	52%	100%
A6602	42%	100%
CW17	42%	100%
B2708	27%	100%
CW1	27%	100%
CW14	27%	100%
A32	24%	100%
A2403	21%	100%
A1101	15%	100%
A1102	15%	100%
B65	15%	100%

*** Serum 1108 ***
33 typing Labs

Antigen	Consensus	Inclusion
B42	100%	100%
B54	97%	100%
B55	97%	100%
B60	97%	100%
B61	97%	100%
B73	97%	100%
B47	94%	100%
B63	94%	100%
B7	94%	100%
B81	94%	100%
B13	94%	89%
B27	91%	100%
B48	91%	100%
B56	91%	100%
B67	88%	100%
B82	88%	100%
B57	82%	100%
CW2	82%	100%
CW15	76%	100%
CW9	76%	83%
B46	73%	100%
CW10	67%	100%
CW1	55%	95%
A66	55%	83%
CW14	52%	100%
A6602	42%	100%
CW16	42%	100%
A25	27%	100%
B2708	27%	100%
B64	18%	100%
A32	15%	100%

Method: Luminex

**** Serum 1105 ****

**** Serum 1106 ****

Investigator	POS	%	Other
Alvarez, Carret	38	+ B13	
Eckels/CPMC,	75	+ B18	
Esteves-Kondo,	68	+ B27	
		+ B7	
		+ B35	
		+ B40	
		B42	
		+ B44	
		+ B45	
		B48	
		+ B51	
		+ B55	
		B60	
		+ B62	
		B67	
		+ B8	
		Other	

Investigator	POS	%	Other	Method
	59	+ B27		F C
	98	+ B57		F C
	88	+ B62		F C
		+ B7		
		+ A11		
		+ A23		
		+ A29		
		+ A31		
		+ A32		
		+ A33		
		+ A34		
		+ A68		
		+ B18		
		+ B40		
		B41		
		+ B42		
		+ B44		
		+ B45		
		+ B52		
		B54		
		+ B55		
		Other		
		B65		
		B61		

**** Serum 1107 ****

**** Serum 1108 ****

Investigator	POS	%	Other
Alvarez, Carret	28	+ B13	
Eckels/CPMC,	78	+ B27	
Esteves-Kondo,	78	+ B55	
		+ B7	
		+ A23	
		+ A24	
		+ A33	
		B18	
		B42	
		+ B44	
		B48	
		B60	
		+ B8	
		Other	

Investigator	POS	%	Other	Method
	16	+ B13		F C
	56	+ B27		F C
	63	+ B55		F C
		+ B7		
		+ B42		
		+ B44		
		B47		
		+ B48		
		+ B60		
		Other		

**** Serum 1105 ****

**** Serum 1106 ****

Investigator	POS	%	Other
Esteves-Kondo,	19	+ B27	
Hahn, Amy B. Ph	14	+ B41	
Vidan-Jeras, Bl	67	+ B42	
		+ B48	
		+ B55	
		+ B60	
		+ B7	
		+ B54	
		+ B56	
		+ B61	
		+ B67	
		+ B8	
		+ B81	
		+ B13	
		B37	
		+ B47	
		Other	

Investigator	POS	%	Other	Method
	26	+ B27		EIA
	29	+ B41		EIA
	67	+ B42		EIA
		+ B55		
		+ B7		
		+ B81		
		+ B54		
		+ B37		
		+ B56		
		+ B67		
		+ A25		
		+ A29		
		+ A66		
		+ B18		
		B35		
		B48		
		+ B52		
		+ B57		
		+ B59		
		+ B63		
		+ B8		
		Other		

**** Serum 1107 ****

**** Serum 1108 ****

Investigator	POS	%	Other
Esteves-Kondo,	19	+ B27	
Hahn, Amy B. Ph	17	+ B42	
Vidan-Jeras, Bl	53	+ B48	
		+ B55	
		+ B60	
		+ B7	
		+ B81	
		+ B13	
		+ B47	
		+ B61	
		+ B67	
		+ A24	
		+ A80	
		+ B54	
		+ B56	
		CW2	
		Other	

Investigator	POS	%	Other	Method
	17	+ B27		EIA
	19	+ B42		EIA
	50	+ B47		EIA
		+ B55		
		+ B56		
		+ B60		
		+ B7		
		+ B81		
		+ B54		
		+ B61		
		+ B67		
		+ B48		
		+ B57		
		+ B63		
		Other		

*** Serum 1105 ***
3 typing Labs

Antigen	Consensus	Inclusion
B13	67%	100%
B18	67%	100%
B27	67%	100%
B7	67%	100%
B35	33%	100%
B40	33%	100%
B42	33%	100%
B44	33%	100%
B45	33%	100%
B48	33%	100%
B51	33%	100%
B55	33%	100%
B60	33%	100%
B62	33%	100%
B67	33%	100%
B8	33%	100%

Method: Flow cytometry

*** Serum 1106 ***
3 typing Labs

Antigen	Consensus	Inclusion
B27	67%	100%
B57	67%	100%
B62	67%	100%
B7	67%	100%
A11	33%	100%
A23	33%	100%
A29	33%	100%
A31	33%	100%
A32	33%	100%
A33	33%	100%
A34	33%	100%
A68	33%	100%
B18	33%	100%
B40	33%	100%
B41	33%	100%
B42	33%	100%
B44	33%	100%
B45	33%	100%
B52	33%	100%
B54	33%	100%
B55	33%	100%
B61	33%	100%
B65	33%	100%
B8	33%	100%

*** Serum 1107 ***
3 typing Labs

Antigen	Consensus	Inclusion
B13	67%	100%
B27	67%	100%
B55	67%	100%
B7	67%	100%
A23	33%	100%
A24	33%	100%
A33	33%	100%
B18	33%	100%
B42	33%	100%
B44	33%	100%
B48	33%	100%
B60	33%	100%
B8	33%	100%

*** Serum 1108 ***
3 typing Labs

Antigen	Consensus	Inclusion
B13	67%	100%
B27	67%	100%
B55	67%	100%
B7	67%	100%
B42	33%	100%
B44	33%	100%
B47	33%	100%
B48	33%	100%
B60	33%	100%

*** Serum 1105 ***
3 typing Labs

Antigen	Consensus	Inclusion
B27	100%	100%
B41	100%	100%
B42	100%	100%
B48	100%	100%
B55	100%	100%
B60	100%	100%
B7	100%	100%
B54	67%	100%
B56	67%	100%
B61	67%	100%
B67	67%	100%
B8	67%	100%
B81	67%	100%
B13	67%	50%
B37	33%	100%
B47	33%	100%

Method: Elisa

*** Serum 1106 ***
3 typing Labs

Antigen	Consensus	Inclusion
B27	100%	100%
B41	100%	100%
B42	100%	100%
B55	100%	100%
B7	100%	100%
B81	100%	100%
B54	100%	50%
B37	67%	100%
B56	67%	100%
B67	67%	100%
A25	33%	100%
A29	33%	100%
A66	33%	100%
B18	33%	100%
B35	33%	100%
B48	33%	100%
B52	33%	100%
B57	33%	100%
B59	33%	100%
B63	33%	100%
B8	33%	100%

*** Serum 1107 ***
3 typing Labs

Antigen	Consensus	Inclusion
B27	100%	100%
B42	100%	100%
B48	100%	100%
B55	100%	100%
B60	100%	100%
B7	100%	100%
B81	100%	100%
B13	67%	100%
B47	67%	100%
B61	67%	100%
B67	67%	100%
A24	33%	100%
A80	33%	100%
B54	33%	100%
B56	33%	100%
CW2	33%	100%

*** Serum 1108 ***
3 typing Labs

Antigen	Consensus	Inclusion
B27	100%	100%
B42	100%	100%
B47	100%	100%
B55	100%	100%
B56	100%	100%
B60	100%	100%
B7	100%	100%
B81	100%	100%
B54	67%	100%
B61	67%	100%
B67	67%	100%
B48	33%	100%
B57	33%	100%
B63	33%	100%

**** Serum 1109 ****

Investigator	% POS	A11	A3	A1	Other
Claas, F.H.J.	3				
Esteves Kondo,	8	+			
Hogan, Patrick	5				
Suciu-Foca, Nic	8	+			
Watson, Narelle	5		+	+	

**** Serum 1110 ****

Investigator	% POS	A1	B27	B49	B50	B55	B7	A3	Other
	50		+	+	+	+	+		
	6								
	5	+							
	7							+	

**** Serum 1111 ****

Investigator	% POS	B13	Other
	8	+	
	11		B61,B55,B42
	8	+	
	3		A11

**** Serum 1112 ****

Investigator	% POS	A3	A11	A1	A23	B51	B52	B42	Other
	50	+							
	16	+		+	+	+	+	+	
	12	+	+						
	17	+	+						

Method
STD
STD
STD
STD

**** Serum 1109 ****

Investigator	% POS	Other
Askar, Medhat	29	
Dunn, Paul		
Lardy, N.M.	13	

**** Serum 1110 ****

Investigator	% POS	Other

**** Serum 1111 ****

Investigator	% POS	B13	B60	B41	B61	Other
	9	+				
		+	+	+	+	
	13	+	+			

**** Serum 1112 ****

Investigator	% POS	A3	B62	Other
	20	+		
		+	+	
	38	+		

Method
EXT
EXT
EXT

*** Serum 1109 ***

5 typing Labs

Antigen	Consensus	Inclusion
	No	Consensus

*** Serum 1110 ***

5 typing Labs

Antigen	Consensus	Inclusion
	No	Consensus

*** Serum 1111 ***

5 typing Labs

Antigen	Consensus	Inclusion
B13	60%	44%
A11	20%	100%
B55	20%	100%
B42	20%	60%
B61	20%	60%

*** Serum 1112 ***

5 typing Labs

Antigen	Consensus	Inclusion
A3	100%	88%
A11	40%	100%
A1	20%	100%
A23	20%	100%
B51	20%	100%
B52	20%	100%
B42	20%	75%

Method: NIH-Std

*** Serum 1109 ***

3 typing Labs

Antigen	Consensus	Inclusion
	No	Consensus

*** Serum 1110 ***

3 typing Labs

Antigen	Consensus	Inclusion
	No	Consensus

*** Serum 1111 ***

3 typing Labs

Antigen	Consensus	Inclusion
B13	100%	100%
B60	67%	60%
B41	33%	100%
B61	33%	100%

*** Serum 1112 ***

3 typing Labs

Antigen	Consensus	Inclusion
A3	100%	95%
B62	33%	100%

Method: NIH-Ext

**** Serum 1109 ****

Investigator	POS	%	
Cecka, J. Micha	0		A11
Gandhi, Manish			
Hahn, Amy B. Pl			+
Mah, Helen	2		
Suciu-Foca, Nic	12		+
			Other

**** Serum 1110 ****

Investigator	POS	%	
	27		A1
			B17
			B18
			B51
			B59
			A25
			A24
			A33
			A36
			Other
	0		
	5		+

Method
AHG
AHG
AHG
AHG

**** Serum 1111 ****

Investigator	POS	%	
Cecka, J. Micha	43		B13
Gandhi, Manish			B40
Hahn, Amy B. Pl			B41
Mah, Helen	5		B44
Suciu-Foca, Nic	12		B12
			B21
			B45
			B47
			B50
			B60
			B61
			B49
			Other

**** Serum 1112 ****

Investigator	POS	%	
	52		A3
			A11
			B15
			B35
			B48
			B62
			B63
			CW1
			B49
			B50
			A1
			Other
	25		
	28		+

Method
AHG
AHG
AHG
AHG

**** Serum 1109 ****

Investigator	POS	%	
Dunk, Arthur			B18
			B38
			B39
			B42
			B48
			B55
			B56
			B60
			B65
			B8
			Other

**** Serum 1110 ****

Investigator	POS	%	
			B13
			B42
			B44
			B45
			B7
			Other

Method
OTH

**** Serum 1111 ****

Investigator	POS	%	
Dunk, Arthur			B13
			B14
			B37
			B56
			B60
			B7
			B8
			Other

**** Serum 1112 ****

Investigator	POS	%	
			A3
			Other

Method
OTH

*** Serum 1109 ***

5 typing Labs

Antigen	Consensus	Inclusion
	No consensus	

*** Serum 1110 ***

5 typing Labs

Antigen	Consensus	Inclusion
	No consensus	

*** Serum 1111 ***

5 typing Labs

Antigen	Consensus	Inclusion
B13	80%	80%
B40	40%	100%
B41	40%	100%
B44	40%	100%
B12	20%	100%
B21	20%	100%
B45	20%	100%
B47	20%	100%
B50	20%	100%
B60	20%	100%
B61	20%	100%
B49	20%	75%

*** Serum 1112 ***

5 typing Labs

Antigen	Consensus	Inclusion
A3	100%	94%
A11	60%	100%
B15	20%	100%
B35	20%	100%
B48	20%	100%
B62	20%	100%
B63	20%	100%
CW1	20%	100%
B49	20%	75%
B50	20%	75%
A1	20%	58%

Method: Antiglobulin

*** Serum 1109 ***

1 typing Labs

Antigen	Consensus	Inclusion
	No consensus	

*** Serum 1110 ***

1 typing Labs

Antigen	Consensus	Inclusion
	No consensus	

*** Serum 1111 ***

1 typing Labs

Antigen	Consensus	Inclusion
	No consensus	

*** Serum 1112 ***

1 typing Labs

Antigen	Consensus	Inclusion
	No consensus	

Method: Other

**** Serum 1109 ****

Investigator	% POS	A11	B51	A43	B76	B78	B52	A25	B75	A1101	A1102	A6601	Other	Method
Askar, Medhat Z	20		+	+	+	+	+			+	+			LMX
Baker, Judy		+	+	+	+									LMX
Berka, Noureddi		+	+	+	+	+	+							LMX
Cecka, J. Micha	24	+	+	+	+									LMX
Claas, F.H.J.	8	+	+											LMX
Dada, Ashraf ME		+	+	+	+	+	+							LMX
Dunn, Paul		+	+	+	+	+	+	+	+	+	+		A66	LMX
Eckels/CPMC,	61	+	+	+	+									LMX
Fort, Marylise		+	+	+	+	+	+	+	+				+	LMX
Gandhi, Manish		+	+	+	+	+	+	+	+				A24, A66, B53, A1 >	LMX
Gideoni, Osnat	6	+												LMX
Hahn, Amy B. Ph		+	+	+	+	+	+						+	LMX
Hamdi, Nuha	24	+	+	+	+	+	+							LMX
Hardy, Steven F		+	+	+	+								BW4, BW6	LMX
Harville, Terry		+	+	+										LMX
Hermes, Mark		+	+	+	+	+	+							LMX
Hogan, Patrick		+			+	+								LMX
Holdsworth, Rhc		+	+	+	+	+	+	+	+				+ A66, A1, B46	LMX
JunHe,			+	+	+	+	+	+		+	+			LMX
Klein, Tirza	6	+			+									LMX
Mah, Helen			+	+	+	+	+	+	+	+	+		+ B53, A1, A3, A36 >	LMX
McAlack-Hanau,	11	+												LMX
Meyer, Pieter W	10	+											B54, B67, A29, CW18	LMX
Pais, Maria Lui		+	+	+	+	+	+							LMX
Pancoska, Carol	10	+	+	+										LMX
Permpikul, Vejk	0													LMX
Pham, Tabary/ F	24		+	+	+	+	+			+	+			LMX
Ramon, Daniel E	19		+	+	+	+	+	+	+	+	+	+	+ A24, B49, B53, A1 >	LMX
Rosen-Bronson,	19	+	+	+	+	+	+							LMX
Suciu-Foca, Nic		+	+	+	+									LMX
Turner, E.V. Ph		+												LMX
Vather, Nelson/		+	+	+	+	+	+	+	+				+ B53, A1, A3, A36 >	LMX
Vidan-Jeras, Bl	5	+	+	+	+	+								LMX

**** Serum 1110 ****

Investigator	% POS	A1	A25	A26	A34	A80	B18	A36	A43	B73	A11	CW18	A24	B76	A23	A33	B64	B65	CW6	CW7	A66	B51	CW4	B78	B8	A6601	A68	A1101	A1102	Other	Method	
Askar, Medhat Z	72	+	+	+	+	+	+	+	+	+	+	+	+	+	+	+	+	+	+	+	+	+	+	+	+	+	+	+	+	+	B7801	LMX
Baker, Judy		+	+	+	+	+	+	+	+	+	+	+	+	+	+	+	+	+	+	+	+	+	+	+	+	+	+	+	+	+		LMX
Berka, Noureddi		+	+	+	+	+	+	+	+	+	+	+	+	+	+	+	+	+	+	+	+	+	+	+	+	+	+	+	+	+		LMX
Cecka, J. Micha	58	+	+	+	+	+	+	+	+	+	+	+	+	+	+	+	+	+	+	+	+	+	+	+	+	+	+	+	+	+		LMX
Claas, F.H.J.																																LMX
Dada, Ashraf M		+	+	+	+	+	+	+	+	+	+	+	+	+	+	+	+	+	+	+	+	+	+	+	+	+	+	+	+	+		LMX
Dunn, Paul		+	+	+	+	+	+	+	+	+	+	+	+	+	+	+	+	+	+	+	+	+	+	+	+	+	+	+	+	+		LMX
Eckels/CPMC,	93	+	+	+	+	+	+	+	+	+	+	+	+	+	+	+	+	+	+	+	+	+	+	+	+	+	+	+	+	+	A6602	LMX
Fort, Marylise		+	+	+	+	+	+	+	+	+	+	+	+	+	+	+	+	+	+	+	+	+	+	+	+	+	+	+	+	+	B67,B39	LMX
Gandhi, Manish		+	+	+	+	+	+	+	+	+	+	+	+	+	+	+	+	+	+	+	+	+	+	+	+	+	+	+	+	+	B52,B54,B67,A69 >	LMX
Gideoni, Osnat	52	+	+		+	+	+	+	+		+																			B27,B77	LMX	
Hahn, Amy B. Ph		+	+	+	+	+	+	+	+	+	+	+	+	+	+	+	+	+	+	+	+	+	+	+	+	+	+	+	+	+		LMX
Hamdi, Nuha	58	+	+	+	+	+	+	+	+	+	+	+	+	+	+	+	+	+	+	+	+	+	+	+	+	+	+	+	+	+		LMX
Hardy, Steven F		+	+	+	+	+	+	+	+	+	+	+								+		+									BW6	LMX
Harville, Terry		+	+	+	+	+	+	+	+	+	+	+										+										LMX
Hermes, Mark		+	+	+	+	+	+	+	+	+	+	+	+	+	+	+	+	+	+	+	+	+	+	+	+	+	+	+	+	+		LMX
Hogan, Patrick		+	+	+	+	+	+	+	+	+	+	+	+	+	+	+	+	+	+	+	+	+	+	+	+	+	+	+	+	+	B27,B46,B71	LMX
Holdsworth, Rhc		+	+	+	+	+	+	+	+	+	+	+	+	+	+	+	+	+	+	+	+	+	+	+	+	+	+	+	+	+	A6602	LMX
JunHe,		+	+	+	+	+	+	+	+	+	+	+	+	+	+	+	+	+	+	+	+	+	+	+	+	+	+	+	+	+		LMX
Klein, Tirza	39	+	+	+	+	+	+	+	+	+	+	+	+	+	+	+	+	+	+	+	+	+	+	+	+	+	+	+	+	+	B48,B27,B14,B46 >	LMX
Mah, Helen		+	+	+	+	+	+	+	+	+	+	+	+	+	+	+	+	+	+	+	+	+	+	+	+	+	+	+	+	+	B39,A6602	LMX
McAlack-Hanau,	48	+	+	+	+	+	+	+	+	+	+	+										+										LMX
Meyer, Pieter W	72			+	+		+				+		+		+									+							B15,A74,B58,A1C	LMX
Pais, Maria Lui		+	+	+	+	+	+	+	+	+	+	+	+	+	+	+	+	+	+	+	+	+	+	+	+	+	+	+	+	+	B52,B54,B67,A69 >	LMX
Pancoska, Carol	26	+	+	+	+		+	+	+	+	+	+								+	+											LMX
Permpikul, Vejk	53	+	+	+		+					+																					LMX
Pham, Tabary/ F	78	+	+	+	+	+	+	+	+	+		+	+	+	+	+	+	+	+	+	+		+	+	+	+	+	+	+	+		LMX
Ramon, Daniel E	46	+	+	+	+	+	+	+	+	+		+	+	+	+	+	+	+	+	+	+		+	+						+	B7801	LMX
Rosen-Bronson,	69	+	+	+	+	+	+	+	+	+	+	+	+	+	+	+	+	+	+	+	+	+	+	+	+	+	+	+	+	+		LMX
Suciu-Foca, Nic		+	+	+	+	+	+	+	+	+	+	+	+	+	+	+	+	+	+	+	+	+	+	+	+	+	+	+	+	+		LMX
Turner, E.V. Ph		+	+	+	+	+	+	+	+	+	+	+	+	+	+	+	+	+	+	+	+	+	+	+	+	+	+	+	+	+		LMX
Vather, Nelson/		+	+	+	+	+	+	+	+	+	+	+	+	+	+	+	+	+	+	+	+	+	+	+	+	+	+	+	+	+	B52,B54,B67,A69 >	LMX
Vidan-Jeras, Bl	18	+	+	+	+	+	+	+	+	+	+	+	+	+	+	+	+	+	+	+	+	+	+	+	+	+	+	+	+	+		LMX

**** Serum 1111 ****

Investigator	% POS	B13	B41	B49	B50	B60	B61	B44	B45	B47	B62	B75	B76	B27	B52	B53	B77	B51	B48	B35	B38	B7	B72	B37	B57	B59	B63	B71	B81	B39	B46	B56	B78	B58	B2708	Other	Method		
Askar, Medhat Z	94	+	+	+	+	+	+	+	+	+	+	+	+	+	+	+	+	+	+	+	+	+	+	+	+	+	+	+	+	+	+	+	+	+	+	+	B8101, B3901	LMX	
Baker, Judy		+	+	+	+	+	+	+	+	+	+	+	+	+	+	+	+	+	+	+	+	+	+	+	+	+	+	+	+	+	+	+	+	+	+	+		LMX	
Berka, Noureddi		+	+	+	+	+	+	+	+	+	+	+	+	+	+	+	+	+	+	+	+	+	+	+	+	+	+	+	+	+	+	+	+	+	+	+	A6602	LMX	
Cecka, J. Micha	44	+	+	+	+	+	+	+	+	+	+	+	+					+	+																		LMX		
Claas, F.H.J.																																						LMX	
Dada, Ashraf M		+	+	+	+	+	+	+	+	+	+	+	+	+	+	+	+	+	+	+	+	+	+	+	+	+	+	+	+	+	+	+	+	+	+	+		LMX	
Dunn, Paul		+	+	+	+	+	+	+	+	+	+	+	+	+	+	+	+	+	+	+	+	+	+	+	+	+	+	+	+	+	+	+	+	+	+	+	+	B8101	LMX
Eckels/CPMC,	93	+	+	+	+	+	+	+	+	+	+	+	+	+	+	+	+	+	+	+	+	+	+	+	+	+	+	+	+	+	+	+	+	+	+	+		LMX	
Fort, Marylise		+	+	+	+	+	+	+	+	+	+	+	+	+	+	+	+	+	+	+	+	+	+	+	+	+	+	+	+	+	+	+	+	+	+	+	A66, B55, B67, A26 >	LMX	
Gandhi, Manish		+	+	+	+	+	+	+	+	+	+	+	+	+	+	+	+	+	+	+	+	+	+	+	+	+	+	+	+	+	+	+	+	+	+	+	A66, B54, B55, B67 >	LMX	
Gideoni, Osnat	48	+	+	+	+	+	+		+	+	+													+													B54, A43	LMX	
Hahn, Amy B. Ph		+	+	+	+	+	+	+	+	+	+	+	+	+	+	+	+	+	+	+	+	+	+	+	+	+	+	+	+	+	+	+	+	+	+	+	BW4	LMX	
Hamdi, Nuha	62	+	+	+	+	+	+	+	+	+	+	+	+	+	+	+	+	+	+	+	+	+	+	+	+	+	+	+	+	+	+	+	+	+	+		LMX		
Hardy, Steven F		+	+	+	+	+	+	+	+	+	+	+	+	+	+	+	+	+	+	+	+	+	+	+	+	+	+	+	+	+	+	+	+	+	+	+	BW4, BW6	LMX	
Harville, Terry		+	+	+	+	+	+	+	+	+	+	+	+		+	+	+	+	+	+	+	+															+	LMX	
Hermes, Mark		+	+	+	+	+	+	+	+	+	+	+	+	+	+	+	+	+	+	+	+	+	+	+	+	+	+	+	+	+	+	+	+	+	+	+		LMX	
Hogan, Patrick		+	+	+	+	+	+	+	+	+	+	+	+	+	+	+	+	+	+	+	+	+	+	+	+	+	+	+	+	+	+	+	+	+	+	+	+	LMX	
Holdsworth, Rhc		+	+	+	+	+	+	+	+	+	+	+	+	+	+	+	+	+	+	+	+	+	+	+	+	+	+	+	+	+	+	+	+	+	+	+	+	LMX	
JunHe,		+	+	+	+	+	+	+	+	+	+	+	+	+	+	+	+	+	+	+	+	+	+	+	+	+	+	+	+	+	+	+	+	+	+	+	+	LMX	
Klein, Tirza	27	+	+	+	+	+	+	+	+	+	+	+	+	+									+													+	LMX		
Mah, Helen		+	+	+	+	+	+	+	+	+	+	+	+	+	+	+	+	+	+	+	+	+	+	+	+	+	+	+	+	+	+	+	+	+	+	+	B54, B55, B67, A26 >	LMX	
McAlack-Hanau,	66	+	+	+	+	+	+	+	+	+	+	+	+	+	+	+	+	+	+	+	+	+	+	+	+	+	+	+	+	+	+	+	+	+	+	+		LMX	
Meyer, Pieter W	16													+	+											+										A43, B7C, A1C	LMX		
Pais, Maria Lui		+	+	+	+	+	+	+	+	+	+	+	+	+	+	+	+	+	+	+	+	+	+	+	+	+	+	+	+	+	+	+	+	+	+	+	A66, B67, B73	LMX	
Pancoska, Carol	39	+	+	+	+	+	+	+	+	+	+	+	+	+	+	+	+	+	+	+	+	+	+	+	+	+	+	+	+	+	+	+	+	+	+	+		LMX	
Permpikul, Vejk	35	+	+	+	+	+	+	+																														LMX	
Pham, Tabary/ F	36	+	+	+	+	+	+	+	+	+	+	+	+	+	+	+	+	+	+	+	+	+	+	+	+	+	+	+	+	+	+	+	+	+	+	+	B8101, B3901	LMX	
Ramon, Daniel E	67	+	+	+	+	+	+	+	+	+	+	+	+	+	+	+	+	+	+	+	+	+	+	+	+	+	+	+	+	+	+	+	+	+	+	+	B8101, B3901	LMX	
Rosen-Bronson,	91	+	+	+	+	+	+	+	+	+	+	+	+	+	+	+	+	+	+	+	+	+	+	+	+	+	+	+	+	+	+	+	+	+	+	+		LMX	
Suciu-Foca, Nic		+	+	+	+	+	+	+	+	+	+	+	+	+	+	+	+	+	+	+	+	+	+	+	+	+	+	+	+	+	+	+	+	+	+	+		LMX	
Turner, E.V. Ph		+	+	+	+	+	+	+	+	+	+	+	+	+	+	+	+	+	+	+	+	+	+	+	+	+	+	+	+	+	+	+	+	+	+	+		LMX	
Vather, Nelson/		+	+	+	+	+	+	+	+	+	+	+	+	+	+	+	+	+	+	+	+	+	+	+	+	+	+	+	+	+	+	+	+	+	+	+	+	B54, B55, B67, A26 >	LMX
Vidan-Jeras, Bl	38	+	+	+	+	+	+	+	+	+	+	+	+	+	+	+	+	+	+	+	+	+	+	+	+	+	+	+	+	+	+	+	+	+	+	+		LMX	

*** Serum 1109 ***

33 typing Labs

Antigen	Consensus	Inclusion
A11	82%	18%
B51	79%	9%
A43	76%	100%
B76	76%	100%
B78	58%	100%
B52	52%	100%
A25	24%	100%
B75	21%	100%
A1101	18%	100%
A1102	18%	100%
A6601	18%	100%
A1	15%	100%

*** Serum 1110 ***

33 typing Labs

Antigen	Consensus	Inclusion
A1	94%	100%
A25	94%	100%
A26	94%	100%
A34	94%	100%
A80	94%	100%
B18	94%	100%
A36	91%	100%
A43	88%	100%
B73	88%	80%
A11	82%	100%
CW18	79%	100%
A24	76%	79%
B76	73%	100%
A23	73%	80%
A33	73%	62%
B64	67%	100%
B65	67%	100%
CW6	67%	100%
CW7	67%	100%
A66	64%	75%
B51	61%	50%
CW4	52%	100%
B78	45%	100%
B8	36%	100%
A6601	33%	100%
A68	30%	100%
A1101	18%	100%
A1102	18%	100%
B39	15%	100%

*** Serum 1111 ***

33 typing Labs

Antigen	Consensus	Inclusion
B13	94%	100%
B41	94%	100%
B49	94%	100%
B50	94%	100%
B60	94%	100%
B61	94%	100%
B44	91%	100%
B45	91%	100%
B47	91%	100%
B62	91%	83%
B75	88%	100%
B76	88%	100%
B27	82%	100%
B52	82%	100%
B53	82%	100%
B77	82%	100%
B51	82%	90%
B48	79%	100%
B35	73%	100%
B38	73%	100%
B7	73%	100%
B72	73%	100%
B37	64%	100%
B57	64%	100%
B59	64%	100%
B63	64%	100%
B71	64%	100%
B81	58%	100%
B39	48%	100%
B46	45%	100%
B56	39%	100%
B78	30%	50%
B58	27%	100%
B2708	21%	100%
A43	15%	100%

*** Serum 1112 ***

33 typing Labs

Antigen	Consensus	Inclusion
A3	94%	100%
A24	91%	100%
B53	91%	100%
B56	91%	100%
B62	91%	100%
B72	91%	100%
A36	91%	83%
B63	91%	83%
B50	88%	100%
B71	88%	100%
B73	88%	100%
B75	88%	100%
B76	88%	100%
B57	88%	90%
B35	88%	86%
A1	88%	83%
CW1	88%	83%
B49	85%	100%
B52	85%	100%
B77	85%	100%
CW14	85%	83%
CW18	82%	100%
CW9	82%	100%
CW10	82%	80%
A32	79%	100%
A80	79%	100%
B46	79%	100%
B51	79%	100%
A11	79%	88%
CW4	73%	100%
A74	67%	100%
B13	67%	100%
A30	58%	100%
A31	58%	100%
A29	55%	100%
A25	52%	100%
B55	52%	100%
B58	52%	100%
A34	52%	50%
A33	48%	100%
A23	42%	100%
B78	42%	100%
A43	39%	100%
B45	39%	100%
A26	36%	100%
CW5	36%	100%
CW15	33%	100%
B37	27%	100%
A66	24%	100%
A1101	21%	100%
A1102	21%	100%
B44	21%	100%

Method: Luminex

**** Serum 1109 ****

Investigator	POS	%
Alvarez, Carret	6	+ A11
Esteves Kondo,	22	+ B51

Other

**** Serum 1110 ****

POS	%
9	+ A1
47	+ A11
	+ A25
	+ A36
	+ B18
	+ A26
	+ A66
	+ A23

Other

Method
FC
FC

**** Serum 1111 ****

Investigator	POS	%
Alvarez, Carret	34	+ B13
Esteves Kondo,	50	+ B45
		+ B49
		+ B62
		+ B7
		+ B35
		+ B38
		+ B41
		+ B44
		+ B47
		+ B50
		+ B51
		+ B52
		+ B60

Other

**** Serum 1112 ****

POS	%
28	+ A1
	+ A11
	+ A24
	+ A3
	+ B62
	+ B13
	+ B18
	+ B35
	+ B49
	+ B72
	+ B73
	+ B75
	Other

Other

Method
FC
FC

**** Serum 1109 ****

Investigator	POS	%
Esteves Kondo,	13	+ A11
Hahn, Amy B. Ph		
Vidan-Jeras, Bl	0	

Other

B51

**** Serum 1110 ****

POS	%
26	+ A1
	+ A11
	+ A25
	+ A26
	+ A34
	+ A66
	+ B18
	+ B51
	+ B64
	+ B7

Other

Method
EIA
EIA
EIA

**** Serum 1111 ****

Investigator	POS	%
Esteves Kondo,	36	+ B13
Hahn, Amy B. Ph		+ B41
Vidan-Jeras, Bl	28	+ B45
		+ B47
		+ B50
		+ B49
		+ B60
		+ B61

Other

B48,B44,B51 >

**** Serum 1112 ****

POS	%
50	+ B62
	+ B63
	+ B75
	+ A11
	+ A3
	+ B46
	+ B52
	+ B72

Other

B49,B50,B51 >
B76

Method
EIA
EIA
EIA

*** Serum 1109 ***

2 typing Labs

Antigen	Consensus	Inclusion
A11	100%	100%
B51	50%	100%

*** Serum 1110 ***

2 typing Labs

Antigen	Consensus	Inclusion
A1	100%	100%
A11	100%	100%
A25	50%	100%
A36	50%	100%
B18	50%	100%
A26	50%	50%
A66	50%	50%
A23	50%	33%

*** Serum 1111 ***

2 typing Labs

Antigen	Consensus	Inclusion
B13	100%	100%
B45	100%	100%
B49	100%	100%
B62	100%	100%
B7	100%	67%
B35	50%	100%
B38	50%	100%
B41	50%	100%
B44	50%	100%
B47	50%	100%
B50	50%	100%
B51	50%	100%
B52	50%	100%
B60	50%	100%

*** Serum 1112 ***

2 typing Labs

Antigen	Consensus	Inclusion
A1	100%	100%
A11	100%	100%
A24	100%	100%
A3	100%	100%
B62	100%	100%
B13	50%	100%
B18	50%	100%
B35	50%	100%
B49	50%	100%
B72	50%	100%
B73	50%	100%
B75	50%	100%

Method: Flow cytometry

*** Serum 1109 ***

3 typing Labs

Antigen	Consensus	Inclusion
A11	67%	100%
B51	33%	100%

*** Serum 1110 ***

3 typing Labs

Antigen	Consensus	Inclusion
	No consensus	

*** Serum 1111 ***

3 typing Labs

Antigen	Consensus	Inclusion
B13	100%	100%
B41	100%	100%
B45	100%	100%
B47	100%	100%
B50	100%	100%
B49	67%	100%
B60	67%	100%
B61	67%	100%
A1	33%	100%
B35	33%	100%
B38	33%	100%
B39	33%	100%
B44	33%	100%
B48	33%	100%
B51	33%	100%
B52	33%	100%
B53	33%	100%
B59	33%	100%
B63	33%	100%
B75	33%	100%

*** Serum 1112 ***

3 typing Labs

Antigen	Consensus	Inclusion
B62	100%	100%
B63	100%	100%
B75	100%	100%
A11	67%	100%
A3	67%	100%
B46	67%	100%
B52	67%	100%
B72	67%	100%
B35	33%	100%
B49	33%	100%
B50	33%	100%
B51	33%	100%
B53	33%	100%
B56	33%	100%
B57	33%	100%
B59	33%	100%
B76	33%	100%

Method: Elisa

INVESTIGATOR		DNA EXTRACT #565 (Caucasian)						method
CTR	NAME	A1	A2	B1	B2	C1	C2	
5488	Adams, Sharon	*29:02:01	*31:14N	*35:03:01/56	*44:03:01/109	*04	*16	RSSO, SBT
4691	Ajlan, Abdula	*29	*31	*35	*44	*04	*16	SSO
2332	Al-Awwami, Mo	*29	*31	*35	*44	*04	*16	RSSO
5133	Baker, Judy	*29:02:01	*31:14N	*35:03:01	*44:03:01	*04:01:01/09N+	*16:01:01	
4345	Blasczyk, Rai	*29:02P	*31:01:02G	*35:03P	*44:03P	*04:01:01G	*16:01:01	PCR-SBT
8038	Cao, Kai	*29:02:01	*31:14N	*35:03:01	*44:03:01	*04:01/30/82	*16:01:01	SSO, SSP, SBT
9916	Charlton, Ron	*29:02:01/32	*31:14N/06	*35:03:01	*44:03:01	*04:01:01	*16:01:01	SBT, SSP
8021	Clark, Brenda	*29:01+	*31:01+	*35:03+	*44:03:01+	*04:01+	*16:01+	PCR-SSP, RSSO
1108	Clark, Traci	*29	*31	*35	*44	*04	*16	RSSO
5219	Daniel, Dolly	*29	*31	*35	*44			PCR-SSO
5891	Du, Keming	*29:02	*31:14N	*35:03/56	*44:03/109	*04:01/09N+	*16:01/05/23+	PCR-SBT
3766	Dunn, Paul	*29	*31	*35	*44	*04	*16	PCR-SSO
3135	Enczmann, J.	*29:02	*31:14N	*35:03	*44:03	*04:01	*16:01	SBT, SSP, SSO
762	Fischer&Mayr	*29:02	*31:14N	*35:03	*44:03	*04:01/09N/30	*16:01	SSO, SSP, SBT
4079	Fort, Marylis			*35	*44	*04	*16	SSO
8022	Hedlund, Anna	*29:02	*31:01	*35:03/98	*44:03	*04:01	*16:01	SSP
1461	Hidajat, Mela	*29:02	*31:14N	*35:03	*44:03	*04:01	*16:01	SSO, SSP, SBT
615	Holdsworth, R	*29:02:01G	*31:01:02G	*35:03:01G	*44:03:01G	*04:01:01G	*16:01	SBT
745	Holman, Richa	*29:02:01	*31:14N	*35:03:01	*44:03:01	*04:01	*16:01	SSO, SSP, SBT
2344	Hurley&Hartz	*29:02:01:01+	*31:01:02+	*35:03:01/70	*44:03:01+	*04:01:01:01+	*16:01:01	SBT, SSO
13	Kapoor/Park	*29:02	*31:01	*35:03	*44:03	*04:08	*16:01	
1694	Kissel&Hess	*29	*31	*35	*44	*04	*16	SSP
87	Land, Geoff	*29:02	*31:01	*35:03	*44:03	*04:01	*16:01	SBT, SSO, SSP
278	Lee, Jar-How	*29:02	*31:14N	*35:03	*44:03	*04:01	*16:01	SSP, RSSO
640	Lee, Kyung Wh	*29:02	*31:14N	*35:03	*44:03	*04:01/09N+	*16:01/02/15+	PCR-SBT
5096	Lee, Sun-Ah	*29	*31	*35	*44			SSO
8042	Muncher, Lior	*29:02	*31:01	*35:03	*44:03	*04:01	*16:01	SSO, SSP
9001	Muncher_LR	*29	*31	*35	*44	*04	*16	SSO, SSP
2847	Narisawa, Tad	*29	*31	*35	*44	*04	*16	RSSO
3966	Permpikul&Ve	*29	*31	*35	*44	*04	*16	PCR-SSP
2400	Phelan, Donna	*29:02	*31:01	*35:03	*44:03	*04:01	*16:01	RSSO, SBT, SSP
3753	Reed, Elaine	*29:02	*31:14N	*35:03/56	*44:03/109	*04:01/09N+	*16:01/02/15+	SBT, SSO
3798	Reinsmoen, N	*29:02:01	*31:14N	*35:03:01	*44:03:01	*04:01/09N+	*16:01:01	SSP, SSO, SBT
4251	Schiller, J	*29:02	*31:14N	*35:03	*44:03	*04:01P	*16:01	PCR-RSSO, SBT
3545	Scornik, Juan	*29:02	*31:14N	*35:03	*44:03	*04:01/30/82	*16:01	SSO, SBT
8068	Shanmugam, He	*29	*31	*35	*44	*04	*16	PCR-SSP
746	Stamm, Luz	*29:02	*31:01	*35:03	*44:03	*04:01	*16:01	RSSO, SSP, SBT
4021	Trachtenberg	*29	*31	*35	*44		*16	SSO
5462	Turner, E. V.	*29:02	*31:14N	*35:03	*44:03	*04:01	*16:01	SBT, SSO, SSP
797	Yabe, Hiromasa	*29:02/26/31+	*31:01/06/14N+	*35:03	*44:03	*04:01/09N+	*16:01	SBT, SSO

INVESTIGATOR		DNA EXTRACT #566						
CTR	NAME	A1	A2	B1	B2	C1	C2	method
5488	Adams, Sharon	*02:01:01	*68:05	*39:01:04	*40:05	*03	*07	RSSO, SBT
4691	Ajlan, Abdula	*02	*68	*39	*40	*03	*07	SSO
2332	Al-Awwami, Mo	*02	*68	*39	*40	*03	*07	RSSO
5133	Baker, Judy	*02:01:01	*68:05	*39:01:04	*40:05	*03:04:01// *03:40	*07:02:01+// *07:29	
4345	Blasczyk, Rai	*02:01:01G	*68:05	*39:01:04	*40:05	*03:04P	*07:02P	PCR-SBT
8038	Cao, Kai	*02:01:01	*68:05	*39:01:04	*40:05	*03:04:01	*07:02/50	SSO, SSP, SBT
9916	Charlton, Ron	*02:01:01:01	*68:05	*39:01:04	*40:05	*03:04:01	*07:02:01	SBT, SSP
8021	Clark, Brenda	*02:01:01+	*68:05/20	*39:01+	*40:05	*03:02/04+	*07:02+	PCR-SSP, RSSO
1108	Clark, Traci	*02	*68	*39	*40	*03	*07	RSSO
5219	Daniel, Dolly	*02	*68	*39	*40			PCR-SSO
5891	Du, Keming	*02:01	*68:05	*39:01	*40:05	*03:04/32/35+	*07:02/50/51+	PCR-SBT
3766	Dunn, Paul	*02	*68:05/20	*39	*40:05	*03	*07	PCR-SSO
3135	Enczmann, J.	*02:01/01L	*68:05	*39:01	*40:05	*03:04	*07:02	SBT, SSP, SSO
762	Fischer&Mayr	*02:01/01L	*68:05	*39:01	*40:05	*03:04	*07:02/50	SSO, SSP, SBT
4079	Fort, Marylis	*02	*68	*39	*40	*03	*07	SSO
8022	Hedlund, Anna	*02:01/95	*68:05	*39:01	*40:05	*03:04	*07:02	SSP
1461	Hidajat, Mela	*02:01	*68:05	*39:01	*40:05	*03:04	*07:02	SSO, SSP, SBT
615	Holdsworth, R	*02:01:01G	*68:05	*39:01	*40:05	*03:04:01G	*07:02:01G	SBT
745	Holman, Richa	*02:01:01	*68:05	*39:01:04	*40:05	*03:04	*07:02	SSO, SSP, SBT
2344	Hurley&Hartz	*02:01:01:01+	*68:05	*39:01:04	*40:05	*03:04:01:01+	*07:02:01:01+	SBT, SSO
13	Kapoor/Park	*02:01	*68:05	*39:01	*40:05	*03:04	*07:02	
1694	Kissel&Hess	*02	*68	*39	*40	*03	*07	SSP
87	Land, Geoff	*02:01	*68:05	*39:01	*40:05	*03:04	*07:02	SBT, SSO, SSP
278	Lee, Jar-How	*02:01	*68:05	*39:01	*40:05	*03:04	*07:02	SSP, RSSO
640	Lee, Kyung Wh	*02:01	*68:05	*39:01	*40:05	*03:04/32/35+	*07:02/10/27/29+	PCR-SBT
5096	Lee, Sun-Ah	*02	*68	*39	*40			SSO
8042	Muncher, Lior	*02:01	*68:05	*39:01	*40:05	*03:04	*07:02	SSO, SSP
9001	Muncher_LR	*02	*68	*39	*40	*03	*07	SSO, SSP
2847	Narisawa, Tad	*02	*68	*39	*40	*03	*07	RSSO
3966	Permpikul&Ve	*02	*68	*39	*40	*03	*07	PCR-SSP
2400	Phelan, Donna	*02:01	*68:05	*39:01	*40:05	*03:04	*07:02	RSSO, SBT, SSP
3753	Reed, Elaine	*02:01	*68:05	*39:01	*40:05	*03:04/32/35+	*07:02/10/27/29+	SBT
3798	Reinsmoen, N	*02:01:01/01L	*68:05	*39:01:04	*40:05	*03:04:01	*07:02:01/50	SSP, SSO, SBT
4251	Schiller, J	*02:01	*68:05	*39:01	*40:05	*03:04	*07:02:01G	PCR-RSSO, SBT
3545	Scornik, Juan	*02:01	*68:05	*39:01	*40:05	*03:04	*07:02/50	SSO, SBT
8068	Shanmugam, He	*02	*68	*39	*40	*03	*07	PCR-SSP
746	Stamm, Luz	*02:01	*68:05	*39:01	*40:05	*03:04	*07:02	RSSO, SSP, SBT
4021	Trachtenberg	*02	*68	*39	*40	*03	*07	SSO
5462	Turner, E. V.	*02:01	*68:05	*39:01	*40:05	*03:04	*07:02	SBT, SSO, SSP
797	Yabe, Hiromasa	*02:01/01L	*68:05	*39:01	*40:05	*03:04	*07:02/50	SSO, SBT

INVESTIGATOR		DNA EXTRACT #567 (Filipino)						method
CTR	NAME	A1	A2	B1	B2	C1	C2	
5488	Adams, Sharon	*11	*24	*40:10:01	*48:01:01	*04:03	*08:01:01/22	RSSO, SBT
4691	Ajlan, Abdula	*11	*24	*40	*48	*04	*08	SSO
2332	Al-Awwami, Mo	*11	*24	*40	*48	*04	*08	RSSO
5133	Baker, Judy	*11:01:01	*24:02:01/40	*40:10:01	*48:01:01	*04:03	*08:01:01/22	
4345	Blasczyk, Rai	*11:01:01G	*24:02:01G	*40:10:01	*48:01P	*04:03	*08:01P	PCR-SBT
8038	Cao, Kai	*11:01:01	*24:02	*40:10:01	*48:01:01	*04:03	*08:01/22	SSO, SSP, SBT
9916	Charlton, Ron	*11:01:01	*24:02	*40:10:01	*48:01:01	*04:03	*08:01:01	SBT, SSP
8021	Clark, Brenda	*11:01+	*24:02+	*40:10	*48:01+	*04:03/107	*08:01+	PCR-SSP, RSSO
1108	Clark, Traci	*11	*24	*40	*48	*04	*08	RSSO
5219	Daniel, Dolly	*11	*24	*40	*48			PCR-SSO
5891	Du, Keming	*11:01/04/19+	*24:02/03/10+	*40:10	*48:01	*04:03	*08:01/22	PCR-SBT
3766	Dunn, Paul	*11	*24	*40:10	*48	*04:03/107	*08	PCR-SSO
3135	Enczmann, J.	*11:01	*24:02	*40:10	*48:01	*04:03	*08:01	SBT, SSP, SSO
762	Fischer&Mayr	*11:01	*24:02	*40:10	*48:01	*04:03	*08:01/22	SSO, SSP, SBT
4079	Fort, Marylis	*11	*24	*40	*48	*04	*08	SSO
8022	Hedlund, Anna	*11:01	*24:02/142	*40:10	*48:01	*04:03	*08:01	SSP
1461	Hidajat, Mela	*11:01	*24:02	*40:10	*48:01	*04:03	*08:01	SSO, SSP, SBT
615	Holdsworth, R	*11:01:01G	*24:02:01G	*40:10	*48:01:01G	*04:03	*08:01:01G	SBT
745	Holman, Richa	*11:01	*24:02	*40:10:01	*48:01:01	*04:03	*08:01:01	SSO, SSP, SBT
2344	Hurley&Hartz	*11:01:01/120+	*24:02:01:01+	*40:10:01	*48:01:01+	*04:03	*08:01:01+	SBT, SSO
13	Kapoor/Park	*11:01	*24:02	*40:10	*48:01	*04:03	*08:01	
1694	Kissel&Hess	*11	*24	*40	*48	*04	*08	SSP
87	Land, Geoff	*11:01	*24:02	*40:10	*48:01	*04:03	*08:01	SBT, SSO, SSP
278	Lee, Jar-How	*11:01	*24:02	*40:10	*48:01	*04:03	*08:01	SSP, RSSO
640	Lee, Kyung Wh	*11:01/04/19+	*24:02/03/07+	*40:10	*48:01	*04:03	*08:01/22	PCR-SBT
5096	Lee, Sun-Ah	*11	*24	*40	*48			SSO
8042	Muncher, Lior	*11:01	*24:02	*40:10	*48:01	*04:03	*08:01	SSO, SSP
9001	Muncher_LR	*11	*24	*40	*48	*04	*08	SSO, SSP
2847	Narisawa, Tad	*11	*24	*40	*48	*04	*08	RSSO
3966	Permpikul&Ve	*11	*24	*40	*48	*04	*08	PCR-SSP
2400	Phelan, Donna	*11:01	*24:02/163N	*40:10	*48:01	*04:03	*08:01/22	RSSO, SBT, SSP
3753	Reed, Elaine	*11:01/04/19+	*24:02/03/07+	*40:10	*48:01	*04:03	*08:01/22	SBT
3798	Reinsmoen, N	*11:01:01	*24:02/02L	*40:10:01	*48:01:01	*04:03	*08:01:01/22	SSP, SSO, SBT
4251	Schiller, J	*11:01	*24:02	*40:10	*48:01	*04:03	*08:01:01G	PCR-RSSO, SBT
3545	Scornik, Juan	*11:01	*24:02	*40:10	*48:01	*04:03	*08:01/22	SSO, SBT
8068	Shanmugam, He	*11	*24	*40	*48	*04	*08	PCR-SSP
746	Stamm, Luz	*11:01	*24:02	*40:10	*48:01	*04:03	*08:01	RSSO, SSP, SBT
4021	Trachtenberg	*11	*24	*40	*48	*04	*08	SSO
5462	Turner, E. V.	*11:01	*24:02	*40:10	*48:01	*04:03	*08:01	SBT, SSO, SSP
797	Yabe, Hiromasa	*11:01	*24:02	*40:10	*48:01	*04:03	*08:01/22	SSO, SBT

INVESTIGATOR		DNA EXTRACT #568 (Hispanic)								
CTR	NAME	A1	A2	B1	B2	C1	C2	method		
5488	Adams, Sharon	*24:02/57	*31:01:02/29	*35:20:01/82	*39:01/39	*04		RSSO, SBT		
4691	Ajlan, Abdula	*24	*31	*35	*39	*04	*04	SSO		
2332	Al-Awwami, Mo	*24	*31	*35	*39	*04		RSSO		
5133	Baker, Judy	*24:02:01/40	*31:01:02	*35:20:01	*39:01	*04:01:01/09N/30/82				
4345	Blasczyk, Rai	*24:02:01G	*31:01:02G	*35:20:01	*39:01P	*04:01:01G		PCR-SBT		
8038	Cao, Kai	*24:02	*31:01:02	*35:20:01	*39:01	*04:01/30/82	*04:01/30/82	SSO, SSP, SBT		
9916	Charlton, Ron	*24:02	*31:01:02	*35:20:01	*39:01	*04:01:01		SBT, SSP		
8021	Clark, Brenda	*24:02+	*31:01+	*35:20	*39:01+	*04:01+		PCR-SSP, RSSO		
1108	Clark, Traci	*24	*31	*35	*39	*04	*04	RSSO		
5219	Daniel, Dolly	*24	*31	*35	*39			PCR-SSO		
5891	Du, Keming	*24:02/03/57+	*31:01/05/29+	*35:20/82	*39:01/39	*04:01/09N/30/82		PCR-SBT		
3766	Dunn, Paul	*24	*31	*35:20/82	*39	*04		PCR-SSO		
3135	Enczmann, J.	*24:02	*31:01	*35:20	*39:01	*04:01/09N		SBT, SSP, SSO		
762	Fischer&Mayr	*24:02	*31:01	*35:20	*39:01/01L	*04:01/09N/30		SSO, SSP, SBT		
4079	Fort, Marylis			*35	*39	*04	*04	SSO		
8022	Hedlund, Anna	*24:02/142	*31:01	*35:20	*39:01	*04:01		SSP		
1461	Hidajat, Mela	*24:02	*31:01	*35:20	*39:01	*04:01		SSO, SSP, SBT		
615	Holdsworth, R	*24:02:01G	*31:01:02G	*35:20	*39:01:01G	*04:01:01G		SBT		
745	Holman, Richa	*24:02	*31:01	*35:20:01	*39:01	*04:01:01		SSO, SSP, SBT		
2344	Hurley&Hartz	*24:02:01:01+	*31:01:02+	*35:20:01	*39:01:01:01+	*04:01:01:01+	*04:01:01:01+	SBT, SSO		
13	Kapoor/Park	*24:02	*31:01	*35:20	*39:01	*04:01				
1694	Kissel&Hess	*24	*31	*35	*39	*04		SSP		
87	Land, Geoff	*24:02	*31:01	*35:20	*39:01	*04:01	*04:01	SBT, SSP, SSO		
278	Lee, Jar-How	*24:02	*31:01	*35:20	*39:01	*04:01		SSP, RSSO		
640	Lee, Kyung Wh	*24:02/03/57+	*31:01/02+	*35:20/82	*39:01/39	*04:01/09N/30/82		PCR-SBT		
5096	Lee, Sun-Ah	*24	*31	*35	*39			SSO		
8042	Muncher, Lior	*24:02	*31:01	*35:20	*39:01	*04:01		SSO, SSP		
9001	Muncher_LR	*24	*31	*35	*39	*04		SSO, SSP		
2847	Narisawa, Tad	*24	*31	*35	*39	*04		RSSO		
3966	Permpikul&Ve	*24	*31	*35	*39	*04		PCR-SSP		
2400	Phelan, Donna	*24:02	*31:01	*35:20	*39:01	*04:01:01G		RSSO, SBT, SSP		
3753	Reed, Elaine	*24:02/03/34+	*31:01/02/05+	*35:20/82	*39:01/39	*04:01/09N/30/82		SBT		
3798	Reinsmoen, N	*24:02/02L	*31:01:02	*35:20:01	*39:01/01L	*04:01:01/82		SSP, SSO, SBT		
4251	Schiller, J	*24:02	*31:01	*35:20	*39:01	*04:01P	*04:01P	PCR-RSSO, SBT		
3545	Scornik, Juan	*24:02	*31:01	*35:20	*39:01	*04:01/09N/30/82		SSO, SBT		
8068	Shanmugam, He	*24	*31	*35	*39	*04	*04	PCR-SSP		
746	Stamm, Luz	*24:02	*31:01	*35:20	*39:01	*04:01	*04:01	RSSO, SSP, SBT		
4021	Trachtenberg	*24	*31	*35	*39	*04		SSO		
5462	Turner, E.V.	*24:02/34	*31:01/66	*35:20	*39:01	*04:01		SBT, SSO, SSP		
797	Yabe, Hiromasa	*24:02	*31:01	*35:20	*39:01	*04:01/09N/30+		SSO, SBT		

Extract 565 (Caucasian)

<u>39 labs</u>	
A*29	41%
A*29:02	41%
A*29:02:01	13%
A*29:02P	2%
A*29:02:01G	3%
A*29	100% TOTAL
A*31	41%
A*31:01	15%
A*31:14N	39%
A*31:01:02G	5%
A*31	100% TOTAL

40 labs

B*35	48%
B*35:03	35%
B*35:03:01	13%
B*35:03P	2%
B*35:03:01G	2%
B*35	100% TOTAL
B*44	43%
B*44:03	40%
B*44:03:01	13%
B*44:03P	2%
B*44:03:01G	2%
B*44	100% TOTAL

38 labs

C*04	58%
C*04:01	26%
C*04:01:01	5%
C*04:01P	3%
C*04:01:01G	5%
C*04:08	3%
C*04	100% TOTAL
C*16	42%
C*16:01	42%
C*16:01:01	16%
C*16	100% TOTAL

Extract 566

<u>40 labs</u>	
A*02	40%
A*02:01	43%
A*02:01:01	10%
A*02:01:01:01	2%
A*02:01:01G	5%
A*02	100% TOTAL
A*68	35%
A*68:05	65%
A*68	100% TOTAL

40 labs

B*39	35%
B*39:01	45%
B*39:01:04	20%
B*39	100% TOTAL
B*40	30%
B*40:05	70%
B*40	100% TOTAL

38 labs

C*03	47%
C*03:04	40%
C*03:04:01	8%
C*03:04P	2%
C*03:04:01G	3%
C*03	100% TOTAL
C*07	48%
C*07:02/50	13%
C*07:02	29%
C*07:02:01	3%
C*07:02P	2%
C*07:02:01G	5%
C*07	100% TOTAL

Extract 567 (Filipino)

<u>40 labs</u>	
A*11	48%
A*11:01	37%
A*11:01:01	10%
A*11:01:01G	5%
A*11	100% TOTAL
A*24	58%
A*24:02	37%
A*24:02:01G	5%
A*24	100% TOTAL

40 labs

B*40	30%
B*40:10	50%
B*40:10:01	20%
B*40	100% TOTAL
B*48	38%
B*48:01	43%
B*48:01:01	15%
B*48:01P	2%
B*48:01:01G	2%
B*48	100% TOTAL

38 labs

C*04	32%
C*04:03	68%
C*04	100% TOTAL
C*08	34%
C*08:01/22	29%
C*08:01	24%
C*08:01:01	5%
C*08:01P	3%
C*08:01:01G	5%
C*08	100% TOTAL

Extract 568 (Hisapnic)

<u>39 labs</u>	
A*24	56%
A*24:02	39%
A*24:02:01G	5%
A*24	100% TOTAL
A*31	49%
A*31:01	36%
A*31:01:02	10%
A*31:01:02G	5%
A*31	100% TOTAL

40 labs

B*35	30%
B*35:20/82	13%
B*35:20	40%
B*35:20:01	17%
B*35	100% TOTAL
B*39	43%
B*39:01/39	10%
B*39:01	43%
B*39:01P	2%
B*39:01:01G	2%
B*39	100% TOTAL

38 labs

C*04	37%
C*04:01/09/30/82	10%
C*04:01:01/09N/82	3%
C*04:01/09N/30	3%
C*04:01/30/82	3%
C*04:01/09N	3%
C*04:01:01/82	3%
C*04:01	21%
C*04:01:01	5%
C*04:01P	2%
C*04:01:01G	10%
C*04	100% TOTAL

INVESTIGATOR		CELL NO.1477 (Hispanic)						method
CTR	NAME	A1	A2	B1	B2	C1	C2	
8070	Ahn, Jaeie	*02	*68	*35	*53	*04		PCR-SSP
8075	Al-Baz, Nabe	*02	*68	*35	*53	*04	*04	SSO
16	Askar, Medhat	*02:06:01	*68:02:01	*35:17	*53:01:01	*04:01:01		PCR-RSSO, SBT
774	Cecka, J. Mich	*02	*68	*35	*53	*04		SSP
4492	Charron, D.	*02:06/330/333	*68:02/74	*35:01/42/57+	*53:01/25/26	*04:01/75/79/82+		PCR-SSO, SSP
798	Claas, F. H. J.	*02:06:01	*68:02:01	*35:17	*53:01:01	*04:01:01		SBT
3632	Colombe, Beth	*02:06	*68:02	*35:17	*53:01	*04:01		SSO, SSP
5130	Costeas, Paul	*02:06/28	*68:02	*35:17	*53:01	*04:01/84/106		SSP, SSO
779	Daniel, Claud	*02	*68	*35	*53	*04		PCR-SSP, SSO
8052	Del Pozo, Ana	*02	*68	*35	*53			SSO
3766	Dunn, Paul	*02	*68	*35	*53	*04		SSO
5214	Eckels/CPMC	*02	*68	*35	*53	*04	*04	SSO
762	Fischer&Mayr	*02:06	*68:02	*35:17	*53:01	*04:01/09N/30		SBT ex1-4
792	Gandhi, Manish	*02:06	*68:02	*35:17	*53:01	*04:01		SSO, SSP
9002	Gideoni_LR	*02	*68	*35	*53	*04		SSO
810	Hamdi, Nuha	*02:06	*68:02	*35:01	*53:01	*04:01	*04:01	SSO
4269	Hanau, Daniel	NT						SSP, SSO, SBT
3808	Hogan, Patric	*02	*68	*35	*53	*04		SSP
745	Holman, Richa	*02:06:01	*68:02:01	*35:17	*53:01:01	*04:01:01		SSO, SSP, SBT
771	Israel, Shosh	*02:06	*68:02	*35:17	*53:01	*04:01		SSP
9003	Israel_LR	*02	*68	*35	*53	*04		PCR-SSO
859	Kamoun, Malek	*02:06	*68:02	*35:17	*53:01	*04:01		
4337	Kim, Tai-Gyu	*02:06/126	*68:02	*35:17	*53:01	*04:01/09N/28/30+		SBT
9000	Klein_LR	*02	*68	*35	*53	*04		PCR-SSP, SSO
725	Lardy, N. M.	*02	*68	*35	*53	*04		SSO, SSP
278	Lee, Jar-How	*02:06	*68:02	*35:17	*53:01	*04:01		SSP, RSSO
6649	Lim, Young Ae	*02	*68	*35	*51	*04		SSP
274	Lo, Raymundo	*02	*68	*35	*53	*04:26	*04	SSO
731	Loewenthal, R	*02:06:01	*68:02	*35:17	*53:01:01	*04:01:01		SBT, SSO
759	Lopez-Cepero	*02:06/10/21/28+	*68:02/18N/34+	*35:01/07/17+	*53:01/10/18+	*04:01/05/07/09N+		RSSO
23	Mah, Helen	NT						PCR-SSO
8029	Mani, Rama	*02	*68	*35	*53	*04	*04	SSO
206	McAlack-Hana	*02	*68	*35	*53	*04	*04	RSSO
8001	Rao, Prakash	*02	*68	*35	*53	*04		RSSO
3625	Rees, Tracey	*02:06	*68:02	*35:17	*53:01	*04:01/82		PCR-SSP, SBT
5200	Reinke, Denni	*02	*68	*35	*53	*04		SSP
3519	Renac, Virgi	*02:06	*68:02	*35:17	*53:01	*04:01		SBT
1160	Rosen-Bronso	*02	*68	*35	*53	*04		RSSO, SSP
793	Rubocki, Ron	*02	*68	*35	*53	*04		SSP
4251	Schiller, J	*02:06	*68:02	*35:17	*53:01	*04:01P	*04:01P	PCR-RSSO, SBT
5451	Tilanus, Marc	*02:06:01	*68:02:01	*35:17	*53:01:01	*04:01:01		SBT
5462	Turner, E. V.	*02:06:01	*68:02:01	*35:17	*53:01:01	*04:01		SBT, SSO, SSP
3186	Watson, Narel	*02	*68	*35	*53	*04	*04	SSO

INVESTIGATOR	CELL NO.1478 (Hispanic)	A1	A2	B1	B2	C1	C2	method
8070 Ahn,Jaeie		*03	*29	*18	*40	*03	*07	PCR-SSP
8075 Al-Baz,Nabe		*03	*29	*18	*40	*03	*07	SSO
16 Askar,Medhat		*03:01:01//*03:22:01	*29:02:01//*29:09	*18:01:01/17N	*40:01	*03:04	*07:01	PCR-RSSO, SBT
774 Cecka,J.Mich		*03	*29	*18	*40	*03	*07	SSP
4492 Charron,D.		*03:01/112/118/119+	*29:02	*18:01/39/53+	*40:01/74/88+	*03:04/100/105+	*07:01/103+	PCR-SSO, SSP
798 Claas,F.H.J.		*03:01:01	*29:02:01	*18:01:01	*40:01:02	*03:04:01	*07:01	SBT
3632 Colombe,Beth		*03:01	*29:02	*18:01	*40:01	*03:04	*07:01	SSO, SSP
5130 Costeas,Paul		*03:01	*29:02/27	*18:01/42/43	*40:01	*03:04	*07:01	SSP, SSO
779 Daniel,Claud		*03	*29	*18	*40(B60)	*03(Cw10)	*07	PCR-SSP, SSO
8052 Del Pozo,Ana		*03	*29	*18	*40			SSO
3766 Dunn,Paul		*03	*29	*18	*40	*03	*07	SSO
5214 Eckels/CPMC		*03	*29	*18	*40(B60)	*03(Cw10)	*07	SSO
762 Fischer&Mayr		*03:01	*29:02	*18:01	*40:01	*03:04	*07:01/06/18	SBT ex1-4
792 Gandhi,Manish		*03:01	*29:02	*18:01	*40:01	*03:04	*07:01	SSO, SSP
9002 Gideoni_LR		*03	*29	*18	*40	*03	*07	SSO
810 Hamdi,Nuha		*03:01	*29:01	*18:01	*40:01	*03:02	*07:01	SSO
4269 Hanau,Daniel		NT						SSP, SSO, SBT
3808 Hogan,Patric		*03	*29	*18	*40:01+	*03:04+	*07:01+	SSP
745 Holman,Richa		*03:01:01	*29:02:01	*18:01:01	*40:01	*03:04	*07:01	SSO, SSP, SBT
771 Israel,Shosh		*03:01	*29:02	*18:01	*40:01	*03:04	*07:01	SSP
9003 Israel_LR		*03	*29	*18	*40	*03	*07	PCR-SSO
859 Kamoun,Malek		*03:01	*29:02	*18:01	*40:01	*03:04	*07:01	
4337 Kim,Tai-Gyu		*03:01/20/21N/26+	*29:02/26	*18:01/17N/53	*40:01/55/141+	*03:04/100/101+	*07:01/18/52+	SBT
9000 Klein_LR		*03	*29	*18	*40	*03	*07	PCR-SSP, SSO
725 Lardy,N.M.		*03	*29	*18	*40	*03	*07	SSO, SSP
278 Lee,Jar-How		*03:01	*29:02/26	*18:01	*40:01	*03:04	*07:01	SSP, RSSO
6649 Lim,Young Ae		*03	*29	*18	*40(B60)	*03	*07	SSP
274 Lo,Raymundo		*03	*29	*18	*40	*03:15	*07:43	SSO
731 Loewenthal,R		*03:01:01/22	*29:02/09	*18:01:01	*40:01:02	*03:04	*07:01	SBT, SSO
759 Lopez-Cepero		*03:01/04/11N/13+	*29:01/02/04/06+	*18:01-03/05+	*40:01/22N/25+	*03:04/02/05/06+	*07:01/05/06+	RSSO
23 Mah,Helen		*03	*29:02/26	*18:01/02	*40:01	*03:04	*07:01	PCR-SSO
8029 Mani,Rama		*03	*29	*18	*40	*03	*07	SSO
206 McAlack-Hana		*03	*29	*18	*40(B60)	*03(Cw10)	*07	RSSO
8001 Rao,Prakash		*03	*29	*18	*40:01	*03:02/04-06/08+	*07	RSSO
3625 Rees,Tracey		*03:01//*03:22	*29:02//*29:09	*18:01/17N	*40:01	*03:04	*07:01	PCR-SSP, SBT
5200 Reinke,Denni		*03	*29	*18	*40(B60)	*03(Cw10)	*07	SSP
3519 Renac,Virgi		*03:01	*29:02	*18:01	*40:01	*03:04	*07:01	SBT
1160 Rosen-Bronso		*03	*29	*18	*40	*03	*07	RSSO, SSP
793 Rubocki,Ron		*03	*29	*18	*40(B60)	*03(Cw10)	*07	SSP
4251 Schiller,J		*03:01:01G	*29:02	*18:01:01G	*40:01	*03:04	*07:01	PCR-RSSO, SBT
5451 Tilanus,Marc		*03:01:01	*29:02:01	*18:01:01	*40:01:02	*03:04:01	*07:01:01	SBT
5462 Turner,E.V.		*03:01:01:01+	*29:02:01	*18:01	*40:01	*03:04	*07:01	SBT, SSO, SSP
3186 Watson,Narel		*03	*29	*18:01/17N	*40:01	*03:04:01	*07:01/06/18	SSO, SBT

INVESTIGATOR		CELL NO.1479 (Hispanic)						method
CTR	NAME	A1	A2	B1	B2	C1	C2	
8070	Ahn, Jaeie	*24	*25	*39	*40	*03	*07	PCR-SSP
8075	Al-Baz, Nabe	*24	*25	*39	*40	*03	*07	SSO
16	Askar, Medhat	*24:02	*25:01	*39:06:02	*40:02:01	*03:06	*07:02:01/50	PCR-RSSO, SBT
774	Cecka, J. Mich	*24	*25	*39:03/06/14+	*40	*03	*07	SSP
4492	Charron, D.	*24:02/144/150+	*25:01	*39:06/64	*40	*03:06	*07:02/159/160+	PCR-SSO, SSP
798	Claas, F. H. J.	*24:02	*25:01:01	*39:06:02	*40:02:01	*03:06	*07:02:01	SBT
3632	Colombe, Beth	*24:02	*25:01	*39:06	*40:02	*03:06	*07:02	SSO, SSP
5130	Costeas, Paul	*24:02/35	*25:01	*39:06	*40:02	*03:06	*07:02	SSP, SSO
779	Daniel, Claud	*24	*25	*39	*40 (B61)	*03 (Cw10)	*07	PCR-SSP, SSO
8052	Del Pozo, Ana	*24	*25	*39	*40			SSO
3766	Dunn, Paul	*24	*25	*39:06/14/50+	*40	*03	*07	SSO
5214	Eckels/CPMC	*24	*25	*39	*40 (B61)	*03 (Cw10)	*07	SSO
762	Fischer&Mayr	*24:02	*25:01	*39:06	*40:02	*03:06	*07:02/50	SBT ex1-4
792	Gandhi, Manish	*24:02	*25:01	*39:06	*40:02	*03:06	*07:02	SSO, SSP
9002	Gideoni_LR	*24	*25	*39	*40	*03	*07	SSO
810	Hamdi, Nuha	*24:02	*25:01	*39:06	*40:02	*03:02	*07:05	SSO
4269	Hanau, Daniel	NT						SSP, SSO, SBT
3808	Hogan, Patric	*24	*25	*39:06/50/57+	*40:02+	*03:04+	*07:02+	SSP
745	Holman, Richa	*24:02	*25:01:01	*39:06	*40:02	*03:06	*07:02:01	SSO, SSP, SBT
771	Israel, Shosh	*24:02	*25:01	*39:06	*40:02	*03:06	*07:02	SSP
9003	Israel_LR	*24	*25	*39	*40	*03	*07	PCR-SSO
859	Kamoun, Malek	*24:02	*25:01	*39:06	*40:02	*03:06	*07:02	
4337	Kim, Tai-Gyu	*24:02/09N/11N+	*25:01	*39:06	*40:02/56/97+	*03:06	*07:02/50/66+	SBT
9000	Klein_LR	*24	*25	*39	*40	*03	*07	PCR-SSP, SSO
725	Lardy, N. M.	*24	*25	*39	*40	*03	*07	SSO, SSP
278	Lee, Jar-How	*24:02	*25:01	*39:06	*40:02	*03:06	*07:02	SSP, RSSO
6649	Lim, Young Ae	*24	*25	*39	*40 (B61)	*03	*07	SSP
274	Lo, Raymundo	*24	*25	*39	*40	*03:04	*07:49	SSO
731	Loewenthal, R	*24:02	*25:01:01	*39:06:02	*40:02:01	*03:06	*07:02	SBT, SSO
759	Lopez-Cepero	*24:02/09N/11N+	*25:01/05/07+	*39:06/14/50+	*40:02/35/39+	*03:04/02/05+	*07:02/05/10+	RSSO
23	Mah, Helen	*24:02	*25:01	*39:06	*40:02	*03:06	*07:02	PCR-SSO
8029	Mani, Rama	*24	*25	*39	*40	*03	*07	SSO
206	McAlack-Hana	*24	*25	*39	*40 (B61)	*03 (Cw10)	*07	RSSO
8001	Rao, Prakash	*24	*25	*39	*40:02	*03:02/04-06/09+	*07	RSSO
3625	Rees, Tracey	*24:02	*25:01	*39	*40:02	*03:06	*07:02	PCR-SSP, SBT
5200	Reinke, Denni	*24	*25	*39	*40 (B61)	*03 (Cw10)	*07	SSP
3519	Renac, Virgi	*24:02	*25:01	*39:06	*40:02	*03:06	*07:02	SBT
1160	Rosen-Bronso	*24	*25	*39	*40	*03	*07	RSSO, SSP
793	Rubocki, Ron	*24	*25	*39	*40 (B61)	*03 (Cw10)	*07	SSP
4251	Schiller, J	*24:02	*25:01	*39:06	*40:02	*03:06	*07:02:01G	PCR-RSSO, SBT
5451	Tilanus, Marc	*24:02:01	*25:01:01	*39:06:02	*40:02:01	*03:06	*07:02:01	SBT
5462	Turner, E. V.	*24:02	*25:01	*39:06	*40:02	*03:06	*07:02	SBT, SSO, SSP
3186	Watson, Narel	*24	*25	*39:06:02	*40:02:01	*03:06	*07:02/50	SSO, SBT

INVESTIGATOR		CELL NO.1480 (Hispanic)						method
CTR	NAME	A1	A2	B1	B2	C1	C2	
8070	Ahn, Jaeie	*02	*02	*39	*51	*07	*16	PCR-SSP
8075	Al-Baz, Nabe	*02	*02	*39	*51	*07	*16	SSO
16	Askar, Medhat	*02:01:01	*02:06:01	*39:05:01	*51:01:01	*07:02:01/50	*16:02:01	PCR-RSSO, SBT
774	Cecka, J. Mich	*02	*02	*39	*51	*07	*16	SSP
4492	Charron, D.	*02:01/97/211+	*02:06/90	*39:05	*51:01/96+	*07:02/159/160+	*16:02	PCR-SSO, SSP
798	Claas, F. H. J.	*02:01:01	*02:06:01	*39:05:01	*51:01:01	*07:02:01	*16:02:01	SBT
3632	Colombe, Beth	*02:01	*02:06	*39:05	*51:01	*07:02	*16:02	SSO, SSP
5130	Costeas, Paul	*02:01	*02:06	*39:05	*51:01	*07:02/87	*16:02	SSP, SSO
779	Daniel, Claud	*02	*02	*39:05	*51	*07	*16	PCR-SSP, SSO
8052	Del Pozo, Ana	*02	*02	*39:05	*51			SSO
3766	Dunn, Paul	*02	*02	*39:05	*51	*07	*16	SSO
5214	Eckels/CPMC	*02	*02	*39:05	*51	*07	*16	SSO
762	Fischer&Mayr	*02:01/01L	*02:06	*39:05	*51:01	*07:02/50	*16:02	SBT ex1-4
792	Gandhi, Manish	*02:01	*02:06	*39:05	*51:01	*07:02	*16:02	SSO, SSP
9002	Gideoni_LR	*02		*39	*51	*07	*16	SSO
810	Hamdi, Nuha	*02:01	*02:06	*39:05	*51:43	*07:02	*16:01	SSO
4269	Hanau, Daniel	NT						SSP, SSO, SBT
3808	Hogan, Patric	*02		*39	*51	*07:02+	*16:02/09/12/19	SSP
745	Holman, Richa	*02:01:01	*02:06:01	*39:05:01	*51:01:01	*07:02:01	*16:02:01	SSO, SSP, SBT
771	Israel, Shosh	*02:01	*02:06	*39:05	*51:01	*07:02	*16:02	SSP
9003	Israel_LR	*02	*02	*39	*51	*07	*16	PCR-SSO
859	Kamoun, Malek	*02:01	*02:06	*39:05	*51:01	*07:02	*16:02	
4337	Kim, Tai-Gyu	*02:01/09/43N+	*02:06/126	*39:05	*51:01/11N+	*07:02/50/66/74+	*16:02	SBT
9000	Klein_LR	*02		*39	*51	*07	*16	PCR-SSP, SSO
725	Lardy, N. M.	*02		*39	*51	*07	*16	SSO, SSP
278	Lee, Jar-How	*02:01	*02:06	*39:05	*51:01	*07:02	*16:02	SSP, RSSO
6649	Lim, Young Ae	*02		*39	*51	*07	*16	SSP
274	Lo, Raymundo	*02	*02:06	*39	*51	*07	*07:31	SSO
731	Loewenthal, R	*02:01	*02:06:01	*39:05:01	*51:01:01	*07:02	*16:02:01	SBT, SSO
759	Lopez-Cepero	*02:01/04/07+	*02:06/10+	*39:05	*51:01/03+	*07:02/13/25/29+	*16:02/01/08-10+	RSSO
23	Mah, Helen	*02:01/09	*02:06	*39:05	*51:01	*07:02	*16:01/02	PCR-SSO
8029	Mani, Rama	*02	*02	*39	*51	*07	*16	SSO
206	McAlack-Hana	*02	*02	*39	*51	*07	*16	RSSO
8001	Rao, Prakash	*02		*39	*51	*07	*16	RSSO
3625	Rees, Tracey	*02:01	*02:06	*39:05	*51	*07:02	*16:02	PCR-SSP, SBT
5200	Reinke, Denni	*02		*39	*51	*07	*16	SSP
3519	Renac, Virgi	*02:01	*02:06	*39:05	*51:01	*07:02	*16:02	SBT
1160	Rosen-Bronso	*02		*39:05	*51	*07	*16	RSSO, SSP
793	Rubocki, Ron	*02		*39	*51	*07	*16	SSP
4251	Schiller, J	*02:01	*02:06	*39:05	*51:01	*07:02:01G	*16:02	PCR-RSSO, SBT
5451	Tilanus, Marc	*02:01:01	*02:06:01	*39:05:01	*51:01:01	*07:02:01	*16:02	SBT
5462	Turner, E. V.	*02:01	*02:06:01	*39:05	*51:01	*07:02	*16:02	SBT, SSO, SSP
3186	Watson, Narel	*02	*02	*39	*51	*07	*16	SSO

Cell 1477 (Hispanic)

<u>41 labs</u>	
A*02	61%
A*02:06	24%
A*02:06:01	15%
A*02	100% TOTAL
A*68	56%
A*68:02	32%
A*68:02:01	12%
A*68	100% TOTAL

Cell 1478 (Hispanic)

<u>42 labs</u>	
A*03	67%
A*03:01	21%
A*03:01:01	10%
A*03:01:01G	2%
A*03	100% TOTAL
A*29	71%
A*29:02	19%
A*29:02:01	10%
A*29	100% TOTAL

Cell 1479 (Hispanic)

<u>42 labs</u>	
A*24	60%
A*24:02	38%
A*24:02:01	2%
A*24	100% TOTAL
A*25	52%
A*25:01	38%
A*25:01:01	10%
A*25	100% TOTAL

Cell 1480 (Hispanic)

<u>42 labs</u>	
A*02	62%
A*02:01	29%
A*02:01:01	9%
A*02	100% TOTAL
A*02	55%
A*02:06	31%
A*02:06:01	14%
A*02	100% TOTAL

41 labs

B*53	54%
B*53:01	29%
B*53:01:01	15%
B*53	98% TOTAL
B*35	59%
B*35:17	41%
B*35	100% TOTAL

42 labs

B*18	67%
B*18:01	21%
B*18:01:01	10%
B*18:01:01G	2%
B*18	100% TOTAL
B*40	52%
B*40:01	41%
B*40:01:02	7%
B*40	100% TOTAL

42 labs

B*39	55%
B*39:06	33%
B*39:06:02	12%
B*39	100% TOTAL
B*40	52%
B*40:02	36%
B*40:02:01	12%
B*40	100% TOTAL

42 labs

B*39	38%
B*39:05	50%
B*39:05:01	12%
B*39	100% TOTAL
B*51	60%
B*51:01	26%
B*51:01:01	12%
B*51:43	2%
B*51	100% TOTAL

40 labs

C*04	63%
C*04:01	20%
C*04:01:01	13%
C*04:01P	2%
C*04:26	2%
C*04	100% TOTAL

41 labs

C*03	51%
C*03:02	2%
C*03:04	37%
C*03:04:01	7%
C*03:15	3%
C*03	100% TOTAL
C*07	56%
C*07:01	39%
C*07:01:01	2%
C*07:43	3%
C*07	100% TOTAL

41 labs

C*03	47%
C*03:02	2%
C*03:04	2%
C*03:06	49%
C*03	100% TOTAL
C*07	59%
C*07:02	27%
C*07:02:01	7%
C*07:02:01G	3%
C*07:05	2%
C*07:49	2%
C*07	100% TOTAL

41 labs

C*07	63%
C*07:02	27%
C*07:02:01	7%
C*07:02:01G	2%
C*07	100% TOTAL
C*16	51%
C*16:01	2%
C*16:02	34%
C*16:02:01	10%
C*16	97% TOTAL

Investigator	Days Old	Cell No 1477 (Hispanic)										Cell No 1478 (Hispanic)							Cell No 1479 (Hispanic)							Cell No 1480 (Hispanic)									
		Viab %	A2	A68	B53	B35	CW4	BW4	BW6	OTHERS	Viab %	A3	A29	B18	B60	CW3	CW7	BW6	OTHERS	Viab %	A24	A25	B39	B61	CW3	CW7	BW6	OTHERS	Viab %	A2	B39	B51	CW7	BW4	BW6
Alonso, Anton	???	90	+	+	+	+	+			90	+	+	+	+	+			CW5	90	+	+	+	+			CW9	90	+	+	+	+				
Alvarez, Carr	???	90	+	+	+	+	+	+	+	90	+	+	+	+	+	+	+		88	+	+	+	B40	+	+	+	+	85	+	B16	+	+	+		
Askar, Medhat	2	95	+	+	+	+	+	+	+	95	+	+	+	+	+	+	+		95	+	+	+	+	+	+	+	95	+	+	+	+	+	+		
Cecka, J. Mic	???	95	+	+	+	+		+	+	95	+	+	+	+			+		95	+	+	+	+			+	95	+	+	+		+	+		
Charron, Domi	???	95	+	+	+	+				98	+	+	+	B40					98	+	+	B16	B40				98	+	B16	+					
Claas, F.H.J.	6	90	+	A28	+		+	+	+	90	+	+	+	+	+		+		90	+	+	+	+	+		+	90	+	+	+		+	+		
Dunk, Arthur	2	98	+	A28	+	+	+	+	+	98	+	+	+	+	+	+	+		98	+	+	+	+	+	+		98	+	+	+	+	+	+		
Dunn, Paul	???	60	+	+	+	+		+	+	98	+	+	+	+			+		95	+	+	+	+			+	BW4	95	+	+	+		+	+	
Enczmann, J	???	95	+	+	+	+				95	+	+	+	+					95	+	+	+	+			+		98	+	+	+				
Esteves Kondo	6	98	+	+	+	+	+	+	+	98	+	+	+	+	+	+	+		98	+	+	+	+	+	+		98	+	+	+	+	+	+		
Fort, Marylis	3	95	+	+	+	+		+	+	98	+	+	+	+			+		95	+	+	+	+			+	95	+	+	+		+	+		
Gideon, Osna	???	100	+	+	+	+	+			100	+	+	+	+	+	+			100	+	+	+	+	+	+		100	+	+	+	+				
Hahn, Amy B.	???	99	+	+	+	+	+	+	+	99	+	+	+	+	+	+	+		99	+	+	+	+	+	+	B40	99	+	+	+	+	+	+	B70>	
Harville, Ter	???	97	+	+	+	+	+	+	+	97	+	+	+	+	CW10	+	+		97	+	+	+	+	CW10	+	+	97	+	+	+	+	+	+		
Hermes, Mark	???	100	+	+	+	+	+	+	+	100	+	+	+	+	+	+	+		100	+	+	+	+	+	+		100	+	+	+	+	+	+		
Hesse, Kissel	???	90	+	+	+	+			B51	95	+	+	+	+	+	+			95	+	+	+	+	+	+		95	+	+	+	+				
Hogan, Patric	???	80	+	A28	+	+	+	+	+	80	+	+	+	+	+	+	+		80	+	+	+	+	+	+	+	80	+	+	+	+	+	+		
Holdsworth, R	14																										0								
Holman, Richa	3	98	+	+	+	+		+	+	98	+	+	+	+			+		98	+	+	B16	+			+	BW4	98	+	B16	+		+	+	
Hubbell, Char	2	95	+	+	+	+		+	+	95	+	+	+	+			+		95	+	+	+	+		+		95	+	+	+		+	+	A69	
Israel, Shosh	6	90	+	A28	+	+	+	+	+	90	+	+	+	+	+	+	+		90	+	+	+	+	+	+		95	+	+	+	+	+	+		
Keown, Paul M	???	90	+	A28	+	+				95	+	+	+	+					90	+	+	+	B40				95	+	B16	+					
Klein, Tirza	???	85	+	+	+	+	+	+	+	80	+	+	+	+	+	+	+		80	+	+	+		+	+	B60	0								
Kvam, Vonnett	2	97	+	A28	+	+	+			97	+	+	+	+	+	+			97	+	+	+	+	+	+		97	+	+	+	+			A74	
Mah, Helen	3	98	+	+	+	+	+	+	+	98	+	+	+	+	+	+	+		98	+	+	+	+	+	+	BW4	98	+	+	+	+	+	+		
McCluskey, Ja	14	20								15									15								10								
Meyer, Pieter	???	80	+		+				A10	70	+	+	+	+					75	+	+	B16				B60	80	+	B16	+					
Monos, Dimitr	2	99	+	A28	+	+				99	+	+	+	+					99	+	+	+	+				98	+	+	+					
Pancoska, Car	2	98	+	+	+	+	+	+	+	98	+	+	+	+	CW10	+	+		98	+	+	B16	+	CW10	+	+	BW4	98	+	B16	+	+	+	+	
Permpikul, Ve	6	90	+	+	+	+		+	+	90	+	+	+	+			+		NT								90	+	+	+		+	+		
Pollack, Mari	???	98	+	+	+	+	+	+	+	98	+	+	+	+	+	+	B61		98	+	+	+	+	+	+		98	+	+	+	+	+	+	C15	
Rees, Tracey	6	80	+	+	+	+	+	+	+	80	+	+	+	+	+	+			80	+	+	+	+	+	+		80	+	+	+	+	+	+		
Renac, Virgin	3	99	+	A28	+	+		+	+	99	+	+	+	+		+			99	+	+	+	B40		+		99	+	B16	+		+	+		
Rosen-Bronson	3	90	+	+	+	+	+			90	+	+	+	+	+	+			90	+	+	+	+	+	+		90	+	+	+	+				
Rubocki, Rona	???	98	+	+	+	+	+			98	+	+	+	+	+	+			98	+	+	+	+	+	+		98	+	+	+	+				
Shai, Isaac	9	92	+	A28	+	+	+	+	B51>	92	+	+	+	+	+	+	+	A33	90	+	A10	B16		+	+	+	B60>	88	+	+	+	+	+	+	A28>
Stavropoulos,	???	95	+	+	+	+	+	+		95	+	+	+	+	+	+			95	+	+	+	+	+	+	BW4	95	+	+	+	+	+	+		
Tilanus, Marc	7	80	+	A28	+	+		+	+	80	+	+	+	+			+		80	+	+	+	+		+		80	+	+	+	+	+	+		
Vather, Nelso	???		A28	+	+						+	+	+	+															+	+				A28>	
Vidan-Jeras,	6	100	+	+	+	+		+	+	96	+	+	+	+			+		100	+	+	+	+		+		100	+	+	+		+	+		
Watson, Narel	8	60	+	A28	+	+		+	+	60	+	+	+	+			+		60	+	+	+	B40		+		60	+	+	+		+	+		
Wisecarver, J	???	98	+	A28	+	+		+	+	98	+	+	+	+			+		98	+	+	+	+		+		98	+	+	+		+	+		

SUMMARY TABLE

(Hispanic) Cell 1477 (40 Samples Typed)	(Hispanic) Cell 1478 (40 Samples Typed)	(Hispanic) Cell 1479 (39 Samples Typed)	(Hispanic) Cell 1480 (39 Samples Typed)
A2 97.5% [97.5%]	A3 100.0%	A24 100.0% [100.0%]	A2 100.0% [100.0%]
A68 65.0%	A29 100.0% [100.0%]	A25 97.4%	B39 79.5%
A28 32.5% [97.5%]	B18 100.0%	A10 2.6% [100.0%]	B16 17.9% [97.4%]
B53 92.5%	B60 95.0%	B39 87.2%	B51 100.0% [100.0%]
B35 97.5%	B40 2.5% [97.5%]	B16 12.8% [100.0%]	CW7 53.8%
CW4 57.5%	CW3 52.5%	B61 79.5%	BW4 69.2%
BW4 70.0%	CW10 5.0% [57.5%]	B40 15.4% [92.3%]	BW6 66.7%
BW6 70.0%	CW7 52.5%	CW3 51.3%	
	BW6 70.0%	CW10 5.1%	
		CW9 2.6% [59.0%]	
		CW7 53.8%	
		BW6 69.2%	
Others Found	Others Found	Others Found	Others Found
B51 5.0%	A33 2.5%	BW4 15.4%	B38 5.1%
CW5 2.5%	B61 2.5%	B60 7.7%	A28 5.1%
A10 2.5%	CW5 2.5%		C15 2.6%
			A69 2.6%
			CW5 2.6%
			A74 2.6%
			B70 2.6%