

# REPORT OF THE 352nd CELL EXCHANGE

## OCTOBER 6, 2010

B-Cell Line	445-446
Serum	1033-1036
DNA Extract	493-496
Cells	1405-1408

### B-cell line Exchange

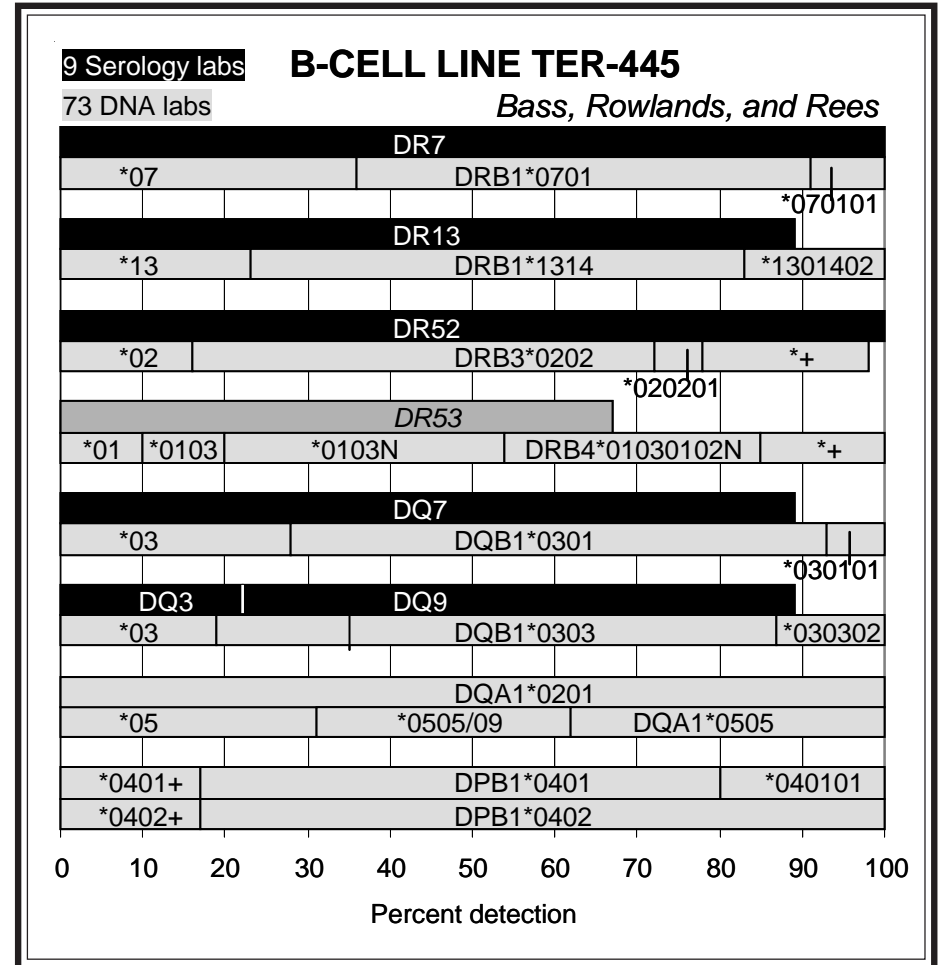
Reference cells for 2 unusual DRB1\*13 alleles were typed in this exchange, thanks to **Helen Bass, Jane Rowlands, and Tracy Rees, Welsh Blood Service, Pontyclun.**

**TER-445.** This cell was 31854, the reference cell for DRB1\*131402 and this present retyping is the third time that this cell has been studied in the Cell Exchange. It was previously typed as TER-292 (2001) and TER-370 (2005), as correctly noted by Barnardo, Chen, Hahn, Lopez-Cepero, Mah, and Stamm.

DRB1\*1314 was detected by 77%, with 17% assigning DRB1\*131402. DR13 was assigned by 89%.

The probable haplotypes in this cell were DRB1\*131402-DRB3\*0202-DQB1\*0301-DQA1\*0505 and DRB1\*0701-DRB4\*01030102N-DQB1\*0303-DQA1\*0201.

DPB1\*0401 (\*040101) and DPB1\*0402 were assigned by consensus. Charron, Eckels, Lopez-Cepero, and Sheikh noted that DPB1\*1402 (now DPB1\*121:01) was possible, not DPB1\*0401. Eckels, Hartzman and Hurley, and Lopez-Cepero said that, instead of DPB1\*0402, DPB1\*0602 (now DPB1\*105:01) was possible.

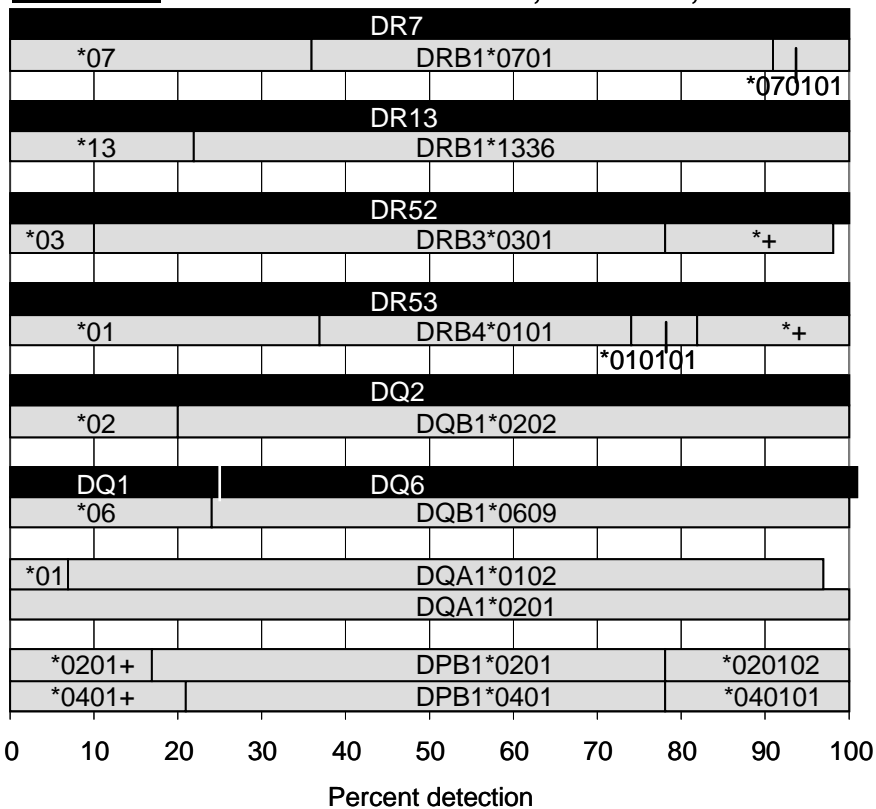


8 Serology labs

### B-CELL LINE TER-446

73 DNA labs

*Bass, Rowlands, and Rees*



**TER-446.** This cell was 30638, a reference cell for the rare DRB1\*1336 and was previously typed as TER-319 (2003) and TER-360 (2005), as identified by Barnardo, Hahn, Lopez-Cepero, Mah, and Stamm. Another DRB1\*1336 reference cell, RD-DJ, was also typed in the Cell Exchange as TER-306 (2002) and TER-359 (2005).

In this present retyping, DRB1\*1336 was well typed, by 78%. DRB1\*1336 differs from the common DRB1\*1302 at codon 47 (TTC->TAC), resulting in an amino acid change (Phe->Tyr) (1,2).

DRB1\*0701 (\*070101) (64%) was the other DRB1-allele.

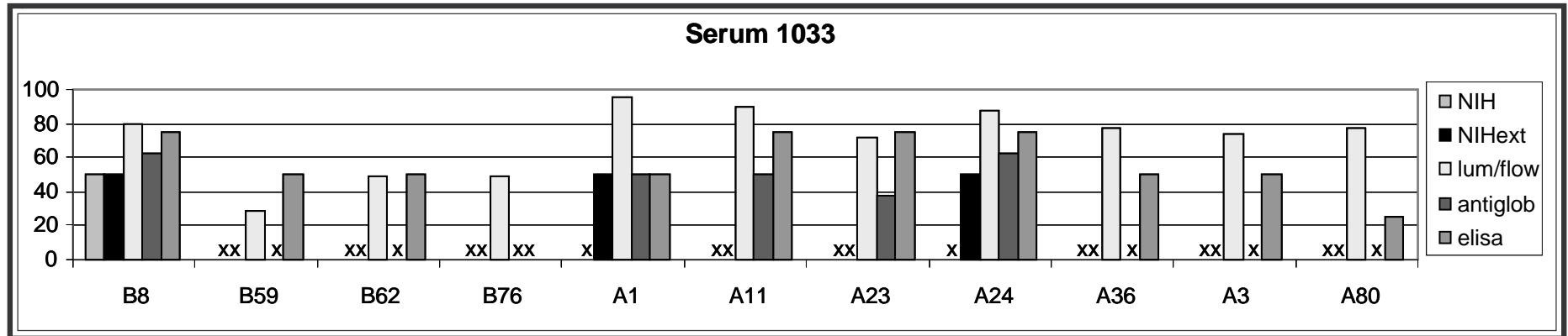
DR7, DR13, DR52, DR53, DQ2, and DQ1 (DQ6) were assigned in complete agreement.

DRB1\*1336-DRB3\*0301-DQB1\*0609-DQA1\*0102 and DRB1\*0701-DRB4\*0101-DQB1\*0202-DQA1\*0201 were the likely haplotypes.

DPB1\*0201(\*020102) and DPB1\*0401 (\*040101) were assigned by the majority. DPB1\*2602 (now DPB1\*123:01) was offered as another possibility by Eckels, Lopez-Cepero, Reinsmoen, Sheikh, and Smith, instead of DPB1\*0201. Also, DPB1\*2402 (now DPB1\*121:01) (Charron, Eckels, Lopez-Cepero, Sheikh) and DPB1\*2302N (now DPB1\*120:01N) (Charron, Smith, Turner) could not be ruled out as other possibilities besides DPB1\*0401.

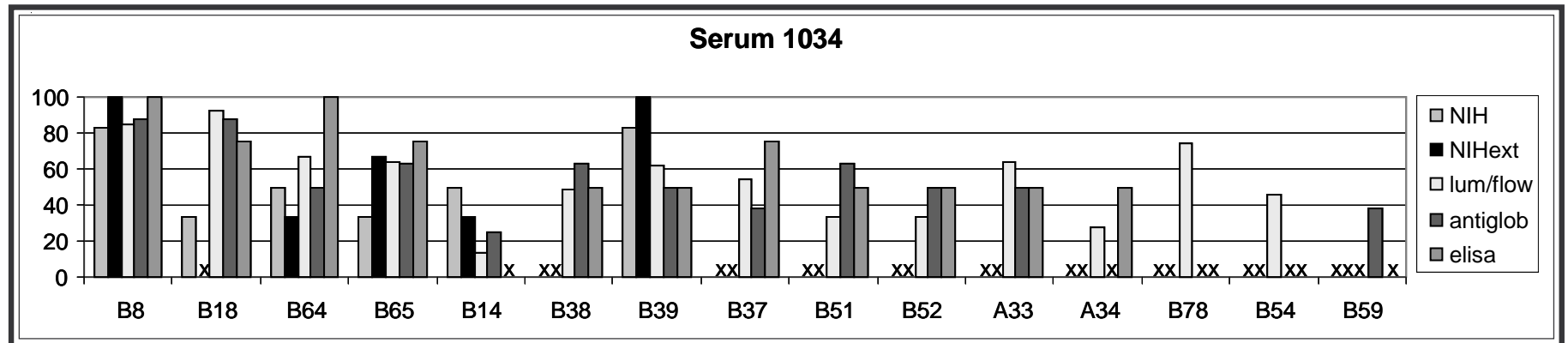
## Serum Exchange

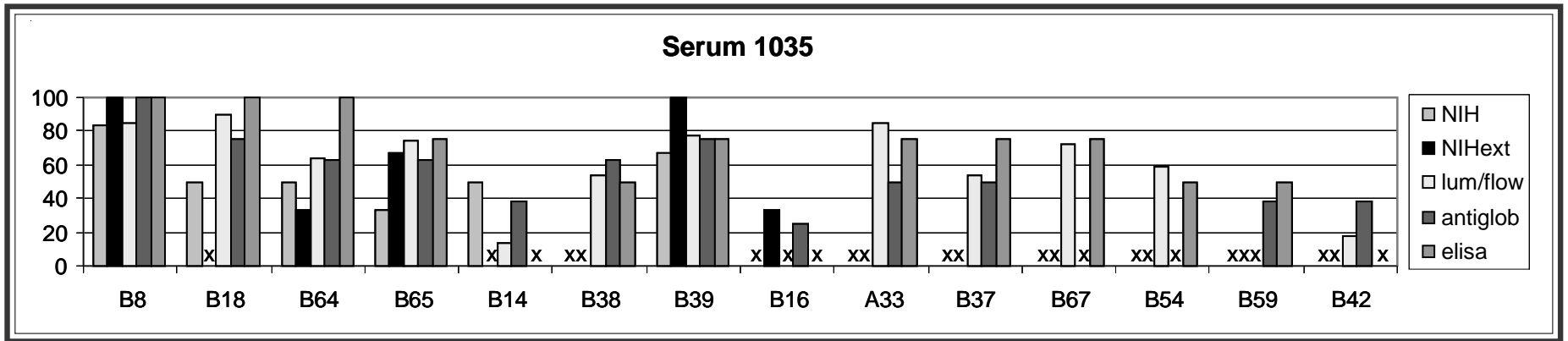
This month's study included 3 serum samples (**sera 1033-1035**) strongly positive to B8 by all methods. The fourth antibody, **serum 1036**, was determined to be positive to B8 and B14 by all methods, with the exception that B8 was not detected by extended NIH.



For **serum 1033**, labs using antiglobulin, Luminex, flow, and ELISA reported additional reactivity A1, A11, A23, and A24. Labs using extended NIH reported positivity to A1 and A24. Luminex, flow, and ELISA also detected anti-A36, -A3, -A80, and -B15 reactivity.

**Sera 1034 and 1035** were similar in their reactivity patterns, being positive to B8, B39, B14, and B18 by all methods, with the exception that B18 was not reported by labs using extended NIH. Labs using antiglobulin, Luminex, flow, and ELISA also reported B38, B37, and A33. Serum 1034 was also positive

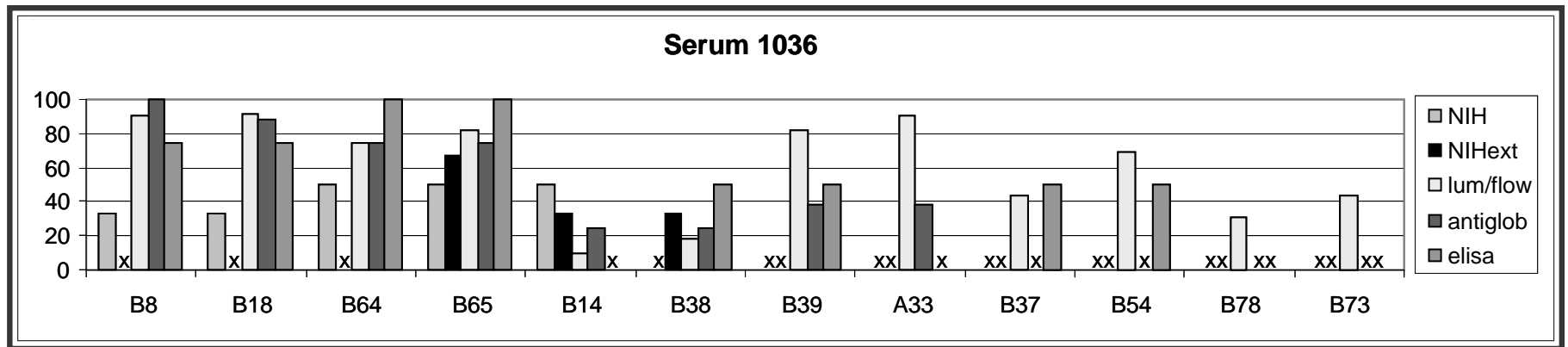




to B51 and B52 by antiglobulin, Luminex, flow, and ELISA. Luminex and flow reported strong anti-B78 reactivity. Serum 1035 was positive to B67 and B54 by Luminex, flow, and ELISA.

**Serum 1036** was positive to B14 (B64, B65) by all methods. This serum was also positive to B8 and B18; however, labs using standard NIH detected

weak reactivity to both and those using extended NIH did not detect either specificity. Varied reactivity to B38 and B39 were reported. A33 was reported by antiglobulin, Luminex, and flow labs. B37 and B54 were also reported by Luminex, flow, and ELISA.

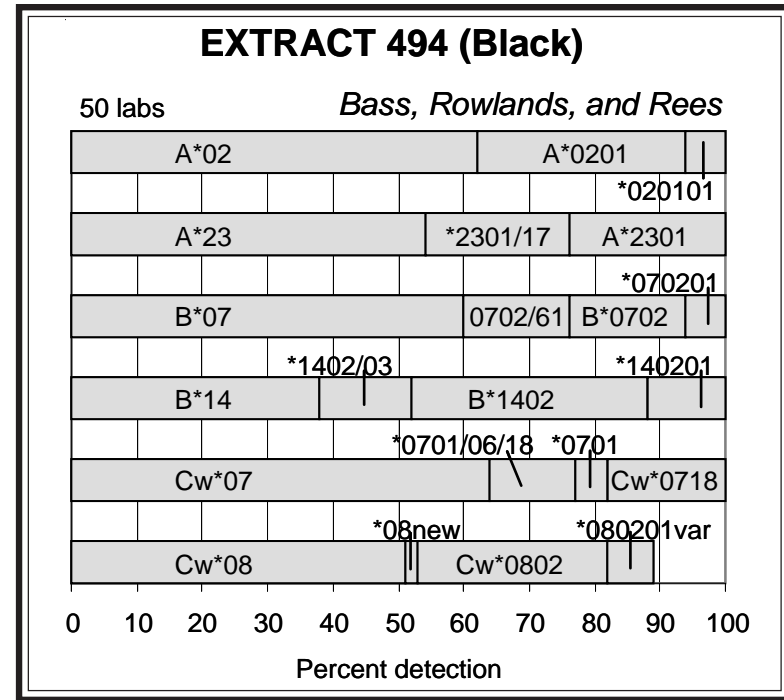
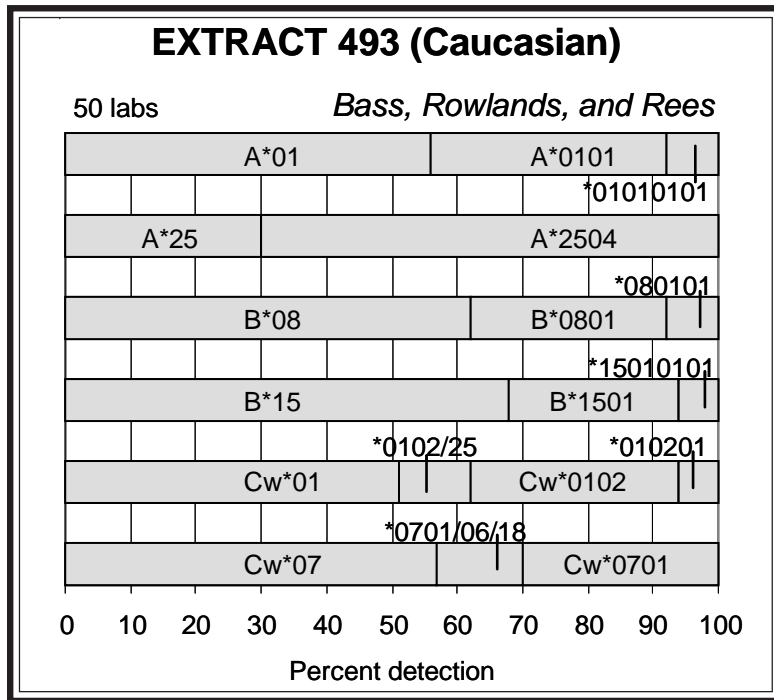


## Extract Exchange

We are grateful for the generous collaboration of **Helen Bass, Jane Rowlands, and Tracy Rees, Welsh Blood Service, Pontyclun**, in providing unusual cells to type in our exchanges.

A new C-locus allele was detected in one of the cells, extract 494, in this

month's study. This Cw\*08 allele has been formally recognized as Cw\*0843 (Rowlands, Welsh Blood Service, and Cao, Cedars-Sinai Health Systems, personal communications, 10/7/10).



**Extract 493.** A\*2504 (69%) was typed for the first time in the Cell Exchange in this cell from a Caucasian donor. Steiner et al. (3) described A\*2504 as most homologous to A\*2501, except for 2 nucleotide substitutions at codon 156 (TGG->CAG), resulting in an amino acid change of tryptophan to glutamine (W->Q).

The haplotypes in this cell may be A\*0101-B\*0801-Cw\*0701 and A\*2504-B\*1501-Cw\*0102. The NMDP Bioinformatics web site, <http://bioinformatics.nmdp.org>, lists A\*0101g-B\*0801g-Cw\*0701g as the most frequently found haplotype in Caucasians, HF=0.09905.

**Extract 494.** Cw\*07 and Cw\*08 were typed by 100% of the labs in this cell from a Black individual. Cw\*0718 was assigned by 17% and Cw\*0802 by 35%. However, it was clear that a novel C-locus variant was present. A total of 15 labs agreed upon a new substitution detected at position 584, at codon 171 (TAG->TGC), resulting in an amino acid change of Tyr->Cys. Stamm noted that this cell typed as Cw\*0718, Cw\*0802 by SSP; however, SBT detected R at position 584 in exon 3. Both Anthony Nolan Trust Laboratory and Stamm noted that all other known HLA-C alleles have A at position 584. Five labs (Barnardo, Chen, Mayr and Fischer, Hartzman and Hurley,

Reinsmoen) noted that a new Cw\*08 was possible, with the variant being closest to Cw\*080201. Cao and Reinsmoen, Cedars-Sinai Health Systems, submitted the new sequence and Cao provided the following information regarding the newly named Cw\*0843:

Gene Bank # HQ215835

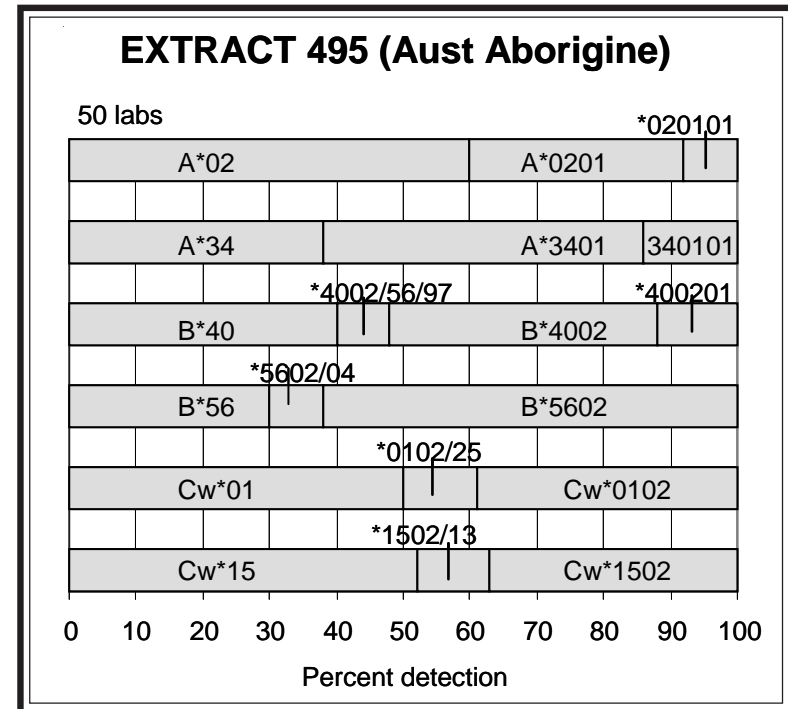
HWS# 10011145

Description: C\*08:43 has one nucleotide change from C\*08:02:01 at NT 584 where A->G (codon 171.2 TAC->TGC) resulting in a coding change, 171Y is changed to C.

The other C-locus allele, Cw\*0718, was previously typed in extract 462 (2009), also typed as extract 392 (2007) from a Japanese/Black donor, and cells 1222 (2004) and 1391 (2010), both from Black individuals.

**Extract 495.** This Australian Aboriginal cell with the rare B\*5602 was IHL, AD036, a reference cell for DRB1\*1414. It has been typed in the workshops as IHW#9124 and has been studied multiple times, for class I as extracts 89 (1999) and 188 (2001), as correctly noted by Barnardo and Brown, and for class II as TER-235 (1999), TER-279 (2001), and TER-421 (2009). This cell is the sole B\*5602 typed in the Cell Exchange.

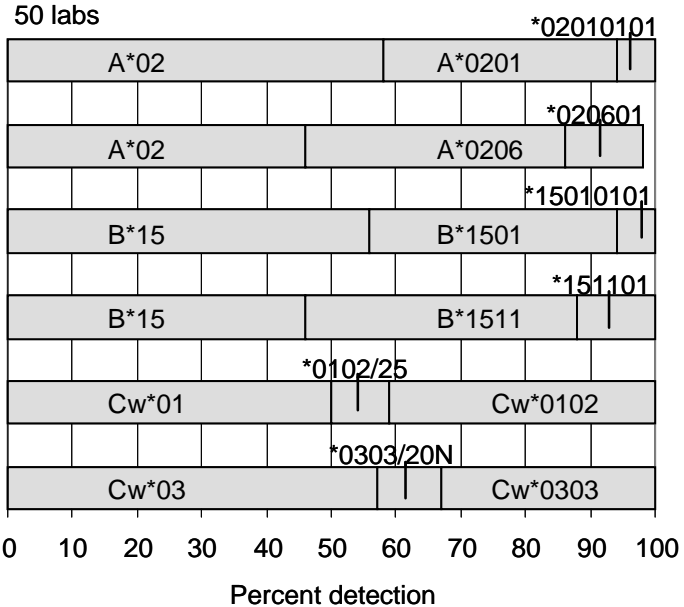
	extract 89	extract 188	extract 495
	1999	2001	2010
	51 labs	66 labs	51 labs
B*56	37%	33%	31%
B*5602/04	31%	23%	8%
<b>B*5602</b>	<b>30%</b>	<b>42%</b>	<b>61%</b>
total	98%	98%	100%



The table shows the improved standardization for B\*5602 over the years since the initial 1999 typing.

The likely haplotypes were A\*0201-B\*4002-Cw\*1502 and A\*3401-B\*5602-Cw\*0102.

### EXTRACT 496 (Cauc/Japanese)



**Extract 496.** This Caucasian and Japanese donor was previously typed as cells 1185 (2004) and 1248 (2005), as correctly identified by Barnardo and Brown.

Two different B\*15 alleles, B\*1501 (43%) and B\*1511 (53%), were detected. Other exchange B\*1511 cells were from Asian donors, including extracts 63 (Thai), 134, and 382 (Chinese), as well as cells 743 (Korean), 892 (Japanese), 984 (Korean), 1338 (Filipino), and 1369 (Korean).

A\*0201 (41%) and A\*0206 (53%) were the A-locus alleles.

In the 2005 retyping, van den Berg-Loonen performed SBT of exon 4 to differentiate A\*020101 from A\*020108, A\*020111, A\*0209, A\*0243N, A\*0266, A\*0275, and A\*0283N, and likewise, to resolve B\*150101 from B\*9502 (now B\*15:102) and B\*9504 (now B\*15:104).

The C-locus types were Cw\*0102 (40%) and Cw\*0303 (32%).

B\*1511-Cw\*0303 is found in strong disequilibrium linkage and according to the NMDP Bioinformatics web site, is found exclusively in Asians. This association was present in all B\*1511 exchange cells typed so far. The other probable association, B\*1501-Cw\*0102, is found in all populations.

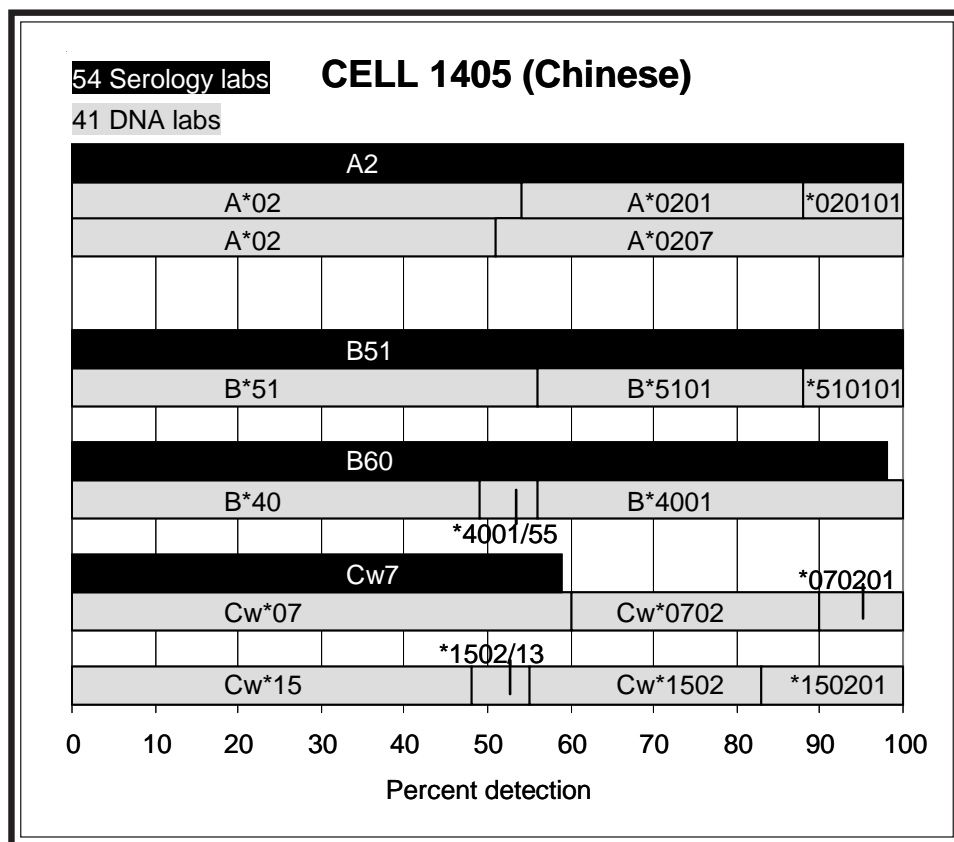
## Cell Exchange

**Cell 1405.** This Chinese donor was well typed as A2, -, B51, B60, Cw7.

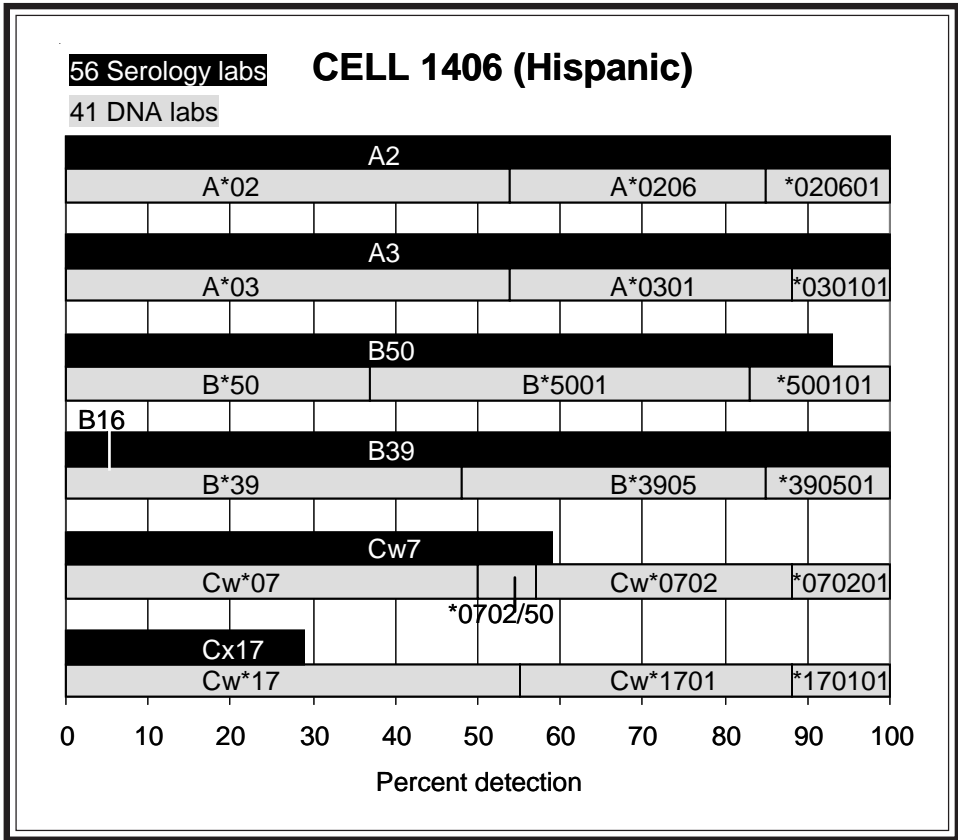
Two different A\*02 alleles were discriminated, A\*0201 (46%) and A\*0207 (49%).

The high-resolution typing of this cell was A\*0201 (\*020101), A\*0207, B\*5101 (\*510101), B\*4001, Cw\*0702 (\*070201), Cw\*1502 (\*150201).

B\*4001-Cw\*0702 and B\*5101-Cw\*1502 are associations commonly found in Asian individuals.







**Cell 1406.** This Hispanic donor was previously typed as cell 1382 (2009), as correctly identified by Harville, Lopez-Cepero, Mah, McAlack, McCluskey, Stamm, and Walter Reed Army Medical Center.

In this present retyping, B39 was detected by 95%. Anthony Nolan Trust Laboratory, Semana, and Tilanus noted weak or non-reactivity with anti-B39 sera along with cross-reactivity with anti-B38 antibodies, reactivity patterns typically observed with B\*3905 cells. B\*3905 was assigned by 52%.

The other B-locus antigen was B50 (93%), confirmed as B\*5001 by 63%

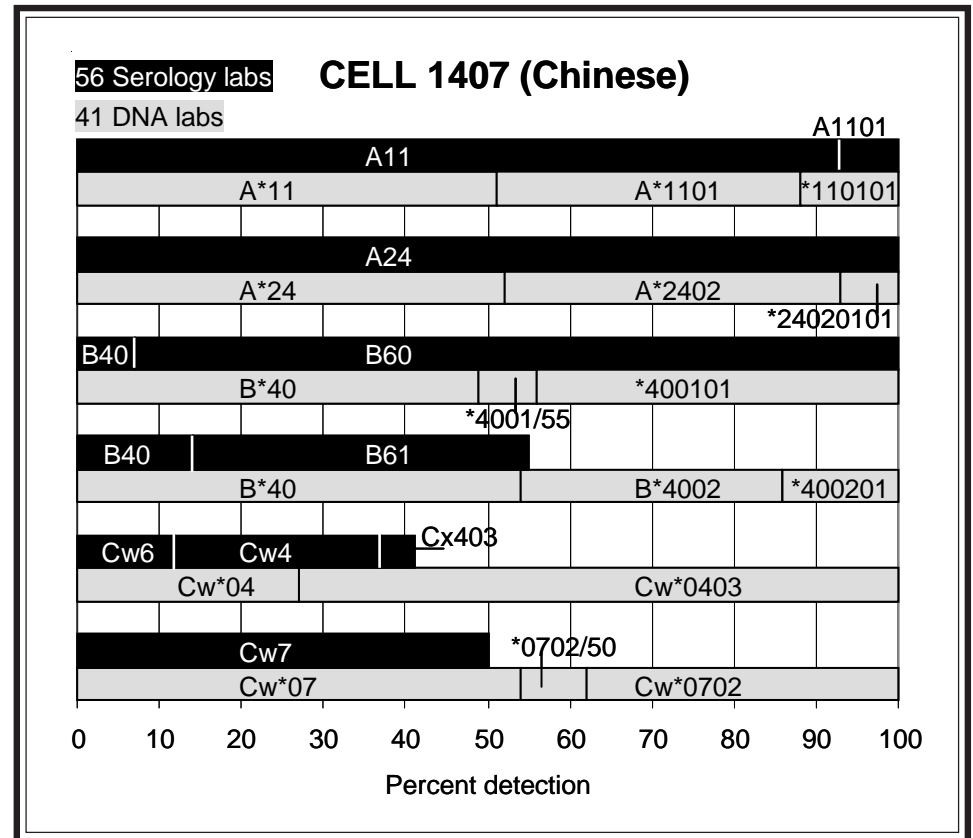
One probable haplotype in this cell may be A\*0206-B\*3905-Cw\*0702, commonly found in Hispanic populations, with HF=0.00660, according to the NMDP Bioinformatics web site. The other probable haplotype was A\*0301-B\*5001-Cw\*1701.

**Cell 1407.** B60 was well typed, as reported by 93%, in this Chinese cell. However, B61 was assigned by only 41%, its detection hampered by the presence of the other B40 split, as commented by a number of labs. B\*4001 and B\*4002 were assigned by 44% and 46%, respectively.

The varied reporting of Cw4 (25%) and Cw6 (13%) indicated the Cx403 variant (4%), which was confirmed by 73% as Cw\*0403.

The other C-locus type was Cw\*0702 (38%).

It was somewhat unclear of the probable associations present in this cell. The NMDP Bioinformatics web site listed B\*4001g-Cw\*0702 with HF=0.02899, B\*4002g-Cw\*0702 with HF=0.00127 and B\*4001g-Cw\*0403 with HF=0.00050, all HF's in Asians. Of note, all previous Cw\*0403 exchange cells were found in association with either B\*1521, B\*1525, or B\*4010, with the only exception in cell 1353 (Filipino) which had B\*1506-Cw\*0403.



**Cell 1408.** It was apparent that an unusual B-locus antigen was present in this cell from a Caucasian donor. B37 was assigned by only 46%. A number of labs, including Anthony Nolan Trust Laboratory, Claas, Esteves Kondo, Harville, Hogan, Holdsworth, Mah, McCluskey, Rees, Rubocki, Semana, Stamm, and Tilanus, noted that the cell did not react strongly or at all with anti-B37 sera. Other B-locus antigens, B47 (18%) and B27 (14%), were also reported. Several labs indicated that a B27xB47 variant was likely present. Esteves Kondo shared the following table:

Reaction Pattern of HLA-B37 Variant with LM144B, Lot#3A (mAbs):

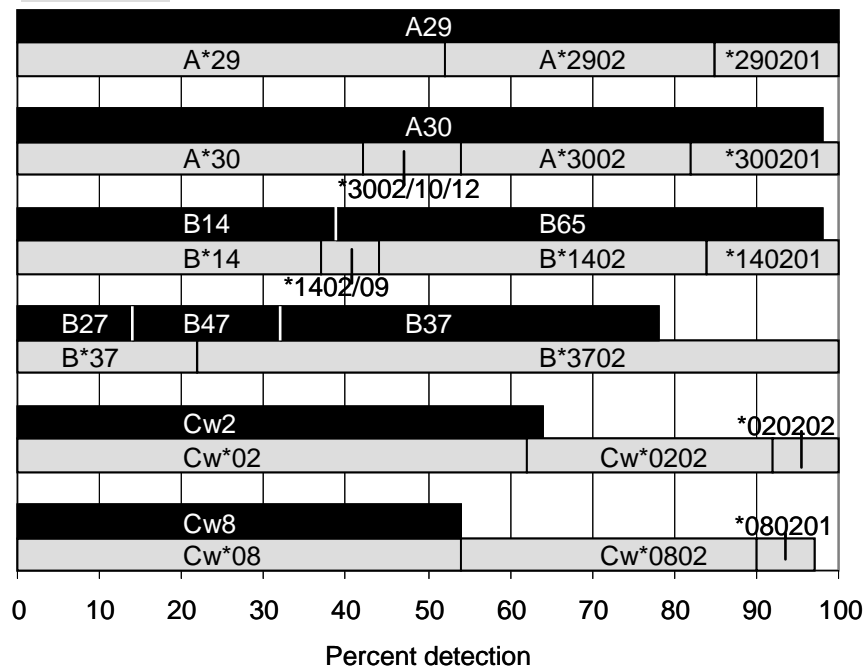
Tray Position	(5C)	(7D)	(7E)	(7F)	(8D)	(8C)	(8A)	(12D)	(12C)
Reaction	+	+	+	-	-	-	+	+	+
HLA Specificity	18	27	27	27	37	37	5	BW4	BW4
	16	13	13	37			53	A25	A23
	14	37	37				37	A32	A25
	37	47	47						A32
	54								
	55								
	67								

Note: Cell# 1408 reacts false negatively against the monospecific mAbs for B37 but reacts strongly positive for all polyspecific mAbs that possess the B37 antigen.

B\*3702 was assigned by 78%. This same donor was previously typed earlier this year as extract 479 and the rare B\*37 allele was detected by 73% in that typing. B\*3702 was described by Santos et al. (4) as a B37-B27 hybrid, with the sequence in exon 2 identical to B\*3701 and exon 3-8 being identical to those of a number of B\*27 alleles. The investigators observed that B\*3702 cells from 2 family members had inconsistent anti-B37 and weak anti-B27 reactivity. This present retyping was the first time that B\*3702 was typed by

### 56 Serology labs CELL 1408 (Caucasian)

43 DNA labs



both serology and DNA in the Cell Exchange.

B14 was assigned in complete agreement, with B65 reported by 59% and confirmed as B\*1402 (56%).

A29 (100%) and A30 (98%) were corroborated as A\*2902 (48%) and A\*3002 (46%), respectively.

The likely associations in this cell may be B\*1402-Cw\*0802, a strong association found in all populations, and B\*3702-Cw\*0202.

## References

1. Jezek DA, Lower FE, Wagenknecht DR, et al. Report of a new DRB1\*13 allele: DRB1\*1336. Tissue Antigens 2001;57:548.
2. Trejaut J, Kennedy A, Hobart D, et al. PCR-RFLP typing detects new HLA-DRB1 alleles: DRB1\*13022, DRB1\*1336 and DRB1\*1435. Eur J Immunogen 2001;28:441.
3. Steiner NK, Rizzo M, Bradshaw, et al. Seventeen novel HLA-A alleles. Tissue Antigens 2003;62:256.
4. Santos S, Vicario JL, Merino JL, and Balas A. Characterization of a new HLA-B allele (B\*3702) generated by an intronic recombinant event. Immunogen 1996;43:171.

***NEXT MAILING DATE: November 10, 2010***

*Marie Lau, Arlene Locke, J. Michael Cecka, and Elaine F. Reed*

B-CELL LINE TER-445

CTR DIRNAME	DRB1	DRB1X	DRB3	DRB4	DQB1	DQB1X	DQA1	DQA1X	DPB1	DPB1	METHOD
4079 Abbal,Michel	*07:01	*13:14			*03:01	*03:03					SSO,SSP
5488 Adams,Sharon	*070101	*131402	*0202	*01030102N	*030101	*030302	*0201	*0505/10	*040101	*0402	RSSO,SBT,SSP
4691 Ajlan,Abdula	*07	*13			*03	*03					SSO
5133 Baker,Judy	*0701	*1314	*0202	*0103N	*0301	*030302	*0201	*0505/09			SSO,SBT
2020 Barnardo,Mar	*07:01:01	*13:14:02	*02:02:01	*01:03:01:02N	*03:01:01	*03:03:02	*02:01	*05:05/08+	*04:01:01	*04:02	P-SSP,SBT
774 Cecka,J.Mich	*07:01/13+	*13:14:02	*02:02/23	*01:03:01:02N	*03:01/21+	*03:03:02	*02:01	*05:05/08+			SSP,SSOP
785 Chan,Soh Ha	*0701	*1314	*020201	*0103	*03	*03	*0201	*0501/03+			SBT
5232 Charlton,Ron	*0701	*1314	*02	*01	*0301	*0303					SSP,RVSSO
4492 Charron,D.	*07:01	*13:14/51+	*02:02	*01:03:01:02N	*03:01	*03:03	*02:01	*05:05/08+	*04:01/+	*0402	P-SSO,SSP
3224 Chen,Dongfen	*07:01	*13:14	*02:02	*01:03:01:02N	*03:01	*03:03	*02:01	*05:05/09			SBT,SSP,RSSO
8021 Clark,Brenda	*0701	*131402	*0107/*02	*01030102N	*0301	*0303			*0401	*0402	P-SSP,SSO
3632 Colombe,Beth	*0701	*1314	*0202	*0103N	*0301	*0303					SSO,SSP
5130 Costeas,Paul	*07:01	*13:14	*02:02	*01:03:01:02N	*03:01	*03:03	*02:01	*05:05			SSO,SSP
779 Daniel,Claud	*07	*13	*+	*01:03:01:02N	*03:01:01+	*03:03:02+					P-SSP
5219 Daniel,Dolly	*07	*13	*+	*+	*03	*03					
8052 Del Pozo,Ana	*07	*1314									P-SSO
5323 Dhaliwal,J.S	*0701	*1314	*0201/24	*0103	*03	*03					P-SSP
5891 Du,Keming	*0701	*1314			*0301	*0303					P-SBT
5214 Eckels/CPMC	*07	*1314	*0202	*0103N	*0301	*0303	*0201	*05	*0401	*0402	SSOP
3428 Eckels/Utah	*0701	*1314			*0301	*0303	*0201	*0505/09	*04:01/+	*0402/*0602	SSOP
2332 Elkhalfifa,Mo	*0701	*1314			*0301	*0303					SSO
4251 Ellis,Thomas	*07:01	*13:14	*02:02/12	*01:01/03/06	*03:01	*03:03			*04:01	*04:02/105:01	P-SSO,SEQ
3135 Fischer,John	*07:01	*13:14	*02:02	*01:03N	*03:01	*03:03			*04:01	*04:02	SBT,P-SSP
762 Fischer/Mayr	*07:01	*13:14	*02:02	*01:03N	*03:01/09+	*03:03	*02:01	*05			SSO,LBT,SSP+
792 Gandhi,Manis	*0701	*1314	*0202	*0103N	*0301	*0303	*0201	*0505/08+			SSO,SSP
8043 Gideon,Osna	*07:01	*13:14			*03:01	*03:03	*02:01	*05:05			SSP
9002 Gideon_LR	*07	*13			*03:01/04+	*03:03/06+					SSP,SSOP
234 Gomez,Carmen	*07	*13	*+	*+	*03						SSP,SSOP
5195 Gomez,Carmen	*07	*1314	*0202	*0103N	*0301	*0303	*0201	*05	*0401	*0402	SSOP
910 Hahn,Amy B.	*07:01/13+	*13:14	*02:02/23	*01:03:01:02N	*03:01/21+	*03:03					SSP
810 Hamdi,Nuha	*07010101	*1314			*0301	*0303	*0201	*0505			SSO
4269 Hanau,Daniel	*0701	*1314			*0301/19	*0303	*0201	*0505/09	*0401	*0402	SSP,SBT-DR
1461 Hidajat,M.	*0701	*1314	*0202	*0103	*0301	*0303			*0401	*0402	SSO,SSP,SBT
2344 Hurley/Hartz	*07010101+	*131402			*030101+	*030302			*040101	*0402/*0602	SBT,SSOP
771 Israel,Shosh	*0701	*1314			*0301	*0303					
9003 Israel_LR	*07	*13			*03						
748 Jaramillo,An	*07	*13	*02/*03	*01	*03(DQ7)	*03(DQ9)					SSOP
859 Kamoun,Malek	*0701	*1314	*0202	*01030102N	*0301	*0303	*0201	*0505			SBT,SSO,SSP
797 Kato,Shunich	*07:01	*13:14			*03:01	*03:03	*02:01	*05:05/09			SSO,SBT
168 Klein,Tirza	*07:01	*13:14			*03:01	*03:03					P-SSP,SSO
9000 Klein_LR	*07	*13			*03	*03					P-SSP,SSO
5096 Koh,Eun-mi	*07	*13									P-SSO
87 Land,Geoffre	*0701	*1314	*0202	*01030102N	*0301	*0303	*0201	*0505	*0401	*0402	SSP,SSO,SBT
725 Lardy,N,M.	*07	*13	*+	*+	*03		*0201	*0505			SSO,SSP
278 Lee,Jar-How	*07:01	*13:14	*02:02	*01:03:01:02N	*03:01	*03:03	*02:01	*05:05	*04:01	*04:02	SSP,RVSSOP
640 Lee,Kyung Wh	*07:01	*13:14			*03:01P	*03:03	*02:01	*05:05			P-SBT
6649 Lim,Young Ae	*07	*13	*+	*+							P-SSP
274 Lo,Raymundo	*07	*13	*+	*+	*0301	*0303					SSP
731 Loewenthal,R	*07:01	*13:14:02			*0301/03	*03					SBT,SSO
759 Lopez-Cepero	*0701/03+	*1314			*0301	*0303	*0201	*0505/09	*04:01/+	*0402/*0602	RVSSO
23 Mah,Helen	*0701	*1314	*0202	*0103N	*0301	*0303	*0201	*0505/09	*0401	*0402	SSO,SSP
8029 Mani,Rama	*07	*13	*+	*+							P-SSP
206 McAlack-Hana	*07	*1314	*0202	*0103N	*0301	*0303					RVSSOP
9916 McIntyre,Joh	*07:01:01	*13:14:02	*02:02	*01:03:01:02N	*03:01	*03:03					SSP,SBT
8042 Muncher,Lior	*0701	*1314			*0301	*0303					SSP,SSOP
8065 Padua,Flore	*07	*13	*01	*01	*0301	*0303					SSP
3648 Pereira,Noem	*07:01P	*13:14:02			*03:01:01	*03:03:02					RVSSO,SBT

B-CELL LINE TER-445

CTR DIRNAME	DRB1	DRB1X	DRB3	DRB4	DQB1	DQB1X	DQA1	DQA1X	DPB1	DPB1	METHOD
3966 Permpikul&Ve	*07:01	*13:14	*02:02	*01:03	*03:01	*03:03					P-SSP
2400 Phelan, Donna	*0701	*1314	*02	*0103N	*0301	*0303					RSSO, SBT, SSP
3753 Reed, Elaine	*0701	*1314	*0202	*0103N	*0301	*0303	*0201	*0505/09			SBT, SSO
3798 Reinsmoen, N	*07:01:01	*13:14:02	*02:02	*01:03N	*03:01	*03:03:02	*02:01	*05:05	*04:01	*04:02	
1160 Rosen-Bronso	*07	*13:14	*02:02	*01:03N	*03:01	*03:03					RVSSO, SSP
793 Rubocki, Rona	*07	*13	*+	*null	*03(DQ7)	*03(DQ9)					SSP
3519 Semana, Gilbe	*0701	*1314	*0202	*0103	*0301	*0303			*0401	*0402	SBT, P-SSP
8001 Sheikh, Maqso	*07:01/15+	*13:14	*02:02	*01:03N	*03:01	*03:03			*04:01	*04:02	RVSSOP, SSP
735 Smith/MI	*0701	*1314	*0202	*0103N	*0301	*0303	*0201	*0505/09	*0401	*0402	RVSSOP, SSP
746 Stamm, Luz	*07:01	*13:14:02	*02	*01	*03:01	*03:03					RSSO, SSP, SBT
13 Tagliere, Jac	*07:01	*13:14	*02:02	*01:03:01:02N	*03:01	*03:03					SSP
769 Tavoularis, S	*07:01	*13:14:02	*02:02	*01:03N	*03:01:01	*03:03:02			*04:01:01	*04:02	SSO, SBT, SSP
5451 Tilanus, Marc	*07:01:01	*13:14:02	*02:02:01	*01:03:01:02N	*03:01:01	*03:03:02	*02:01	*05:05	*04:01:01	*04:02	SBT
4021 Trachtenberg	*07	*1307/14	*02	*01/*0201N	*03	*03					RVSSO
5462 Turner, E.V.	*07:01	*13:14	*02:02	*01:03N	*03:01	*03:03			*04:01/+	*04:02	SEQ, SSO, SSP
3511 Zeevi, Adrian	*0701	*1314	*0202	*01030102N	*0301	*0303	*0201	*0505	*0401	*0402	RVSSOP, SSP

CTR DIRNAME	DR7	DR13	DR52	DQ7	DQ9	OTH1	OTH2
4492 Charron, D.	+	+	+	+	DQ3	DR53	
234 Gomez, Carmen	+	+	+	+	+	DR53	
5195 Gomez, Carmen	+	+	+	+	+	DR53	
910 Hahn, Amy B.	+	+	+	+	+		
4908 Kvam, Vonnett	+	+	+	+	+	DR53	
54 McAlack, Robe	+	+	+	+	+		
8004 Pais, Maria L	+	+	+	+	+	DR53	
793 Rubocki, Rona	+	+	+	+	DQ3		
8063 Shai, Isaac	+		+	+		DR11, DF DR53	

B-CELL LINE TER-445

73 DNA LABS

73 LABS REPORTING DRB1

DRB1*07	36%
DRB1*0701	30%
DRB1*07:01	25%
DRB1*070101	3%
DRB1*07:01:01	5%
DRB1*07010101	1%
DRB1*07	100% TOTAL
DRB1*13	23%
DRB1*1314	37%
DRB1*13:14	23%
DRB1*131402	4%
DRB1*13:14:02	13%
DRB1*13	100% TOTAL

51 LABS REPORTING DRB3

DRB3*+	20%
DRB3*0202	29%
DRB3*02:02	27%
DRB3*020201	2%
DRB3*02:02:01	4%
DRB3*02	16%

51 LABS REPORTING DRB4

DRB4*+	15%
DRB4*0103	8%
DRB4*01:03	2%
DRB4*0103N	20%
DRB4*01:03N	14%
DRB4*01030102N	10%
DRB4*01:03:01:02N	21%
DRB4*01	10%

9 SEROLOGY LABS

DR7	100%
DR13	89%
DR52	100%

69 LABS REPORTING DQB1

DQB1*03	28%
DQB1*0301	37%
DQB1*03:01	28%
DQB1*030101	1%
DQB1*03:01:01	6%
DQB1*03	100% TOTAL
DQB1*03	19%
DQB1*0303	38%
DQB1*03:03	30%
DQB1*030302	4%
DQB1*03:03:02	9%
DQB1*03	100% TOTAL

29 LABS REPORTING DQA1

DQA1*0201	59%
DQA1*02:01	41%
	100% TOTAL
DQA1*05	31%
DQA1*0505/09	24%
DQA1*05:05/09	7%
DQA1*0505	17%
DQA1*05:05	21%
DQA1*05	100% TOTAL

21 LABS REPORTING DPB1

DPB1*04:01/+	17%
DPB1*0401	42%
DPB1*04:01	21%
DPB1*040101	8%
DPB1*04:01:01	12%
DPB1*0402/*0602	13%
DPB1*04:02/*105:01	4%
DPB1*04:02	50%
DPB1*04:02	33%

OTHERS

DR53	67%
------	-----

B-CELL LINE TER-446

CTR DIRNAME	DRB1	DRB1X	DRB3	DRB4	DQB1	DQB1X	DQA1	DQA1X	DPB1	DPB1X	METHOD
4079 Abbal,Michel	*07:01	*13:36			*02:02	*06:09					SSO,SSP
5488 Adams,Sharon	*070101	*1336	*0301	*01	*0202	*0609	*0102	*0201	*020102	*040101	RSSO,SBT,SSP
4691 Ajlan,Abdula	*07	*13			*02	*06					SSO
5133 Baker,Judy	*0701	*1336	*0301	*0101	*0202	*0609	*0102	*0201			SSO,SBT
2020 Barnardo,Mar	*07:01:01	*13:36	*03:01/02	*01:01-05/07	*02:02	*06:09	*01:02/06	*02:01	*02:01:02	*04:01:01	P-SSP,SBT
774 Cecka,J.Mich	*07:01/13+	*13:36	*03:01	*01:01	*02:02	*06:09	*01:02	*02:01			SSP,SSOP
785 Chan,Soh Ha	*0701	*1336	*0301	*010101	*0201/02+	*0609/18		*0201			SBT
5232 Charlton,Ron	*0701	*1336	*02/*03	*01	*0202	*0609					SSP,RVSSO
4492 Charron,D.	*07:01	*13:36	*03:01	*01:01/08	*02:02	*06:09	*01:02/06	*02:01	*02:01	*04:01/+	P-SSO,SSP
3224 Chen,Dongfen	*07:01	*13:36	*03:01	*01:01	*02:02	*06:09	*01:02	*02:01			SBT,SSP,RSSO
8021 Clark,Brenda	*0701	*1336	*03	*01	*0202	*0609			*0201	*0401	P-SSP,SSO
3632 Colombe,Beth	*0701	*1336	*0301	*0101	*0202	*0609					SSO,SSP
5130 Costeas,Paul	*07:01	*13:36	*03:01	*01:01	*02:02	*06:09	*01:02	*02:01			SSO,SSP
779 Daniel,Claud	*07	*13	*+	*+	*02	*06					P-SSP
5219 Daniel,Dolly	*07	*13	*+	*+	*02	*06					
8052 Del Pozo,Ana	*07	*1336									P-SSO
5323 Dhaliwal,J.S	*0701	*1336	*0301	*0101	*02	*06					P-SSP
5891 Du,Keming	*0701	*1336			*0202	*0609					P-SBT
5214 Eckels/CPMC	*07	*1336	*0301	*01	*0202	*0609	*0102	*0201	*0201	*0401	SSOP
3428 Eckels/Utah	*0701	*1336			*0202	*0609	*0102	*0201	*0201/+	*0401/+	SSOP
2332 Elkhalfifa,Mo	*0701	*1336			*0202	*0609					SSO
4251 Ellis,Thomas	*07:01	*13:36	*03:01	*01:01/03/06	*02:02	*06:09			*02:01	*04:01	P-SSO,SEQ
3135 Fischer,John	*07:01	*13:36	*03:01	*01:01	*02:02	*06:09			*02:01	*04:01	SBT,P-SSP
762 Fischer/Mayr	*07:01	*13:36	*03:01	*01:01/06	*02:02	*06:09	*01:02	*02:01			SSO,LBT,SSP+
792 Gandhi,Manis	*0701	*1336	*0301	*0101	*0202	*0609	*0102	*0201			SSO,SSP
8043 Gideon,Osna	*07:01	*13:36			*02:02	*06:09	*01:02	*02:01			SSP
9002 Gideon_LR	*07	*13			*02	*06					SSP,SSOP
234 Gomez,Carmen	*07	*13	*+	*+	*02	*06					SSP,SSOP
5195 Gomez,Carmen	*07	*1336	*0301	*01	*0202	*0609	*0102	*0201	*0201	*0401	SSOP
910 Hahn,Amy B.	*07:01/13+	*13:36	*03:01	*01:01	*02:02	*06:09					SSP
810 Hamdi,Nuha	*07010101	*1336			*0202	*0609	*0102	*0201			SSO
4269 Hanau,Daniel	*0701	*1336			*0102	*0609	*0102	*0201			SSP,SBT-DR
1461 Hidajat,M.	*0701	*1336	*0301	*0101	*0202	*0609			*0201	*0401	SSO,SSP,SBT
2344 Hurley/Hartz	*07010101+	*1336			*0202	*0609			*020102	*040101	SBT,SSOP
771 Israel,Shosh	*0701	*1336			*0202	*0609					
9003 Israel_LR	*07	*13			*02	*06					
748 Jaramillo,An	*07	*13	*02/*03	*01	*02	*06					SSOP
859 Kamoun,Malek	*0701	*1336	*0301	*0101	*0202	*0609	*0102	*0201			SBT,SSO,SSP
797 Kato,Shunich	*07:01	*13:36			*02:02	*06:09	*01:02	*02:01			SSO,SBT
168 Klein,Tirza	*07:01	*13:36			*02:02	*06:09					P-SSP,SSO
9000 Klein_LR	*07	*13			*02	*06					P-SSP,SSO
5096 Koh,Eun-mi	*07	*13									P-SSO
87 Land,Geoffre	*0701	*1336	*0301	*0101	*0202	*0609	*0102	*0201	*0201	*0401	SSP,SSO,SBT
725 Lardy,N,M.	*07	*13	*+	*+	*02	*06	*0102	*0201			SSO,SSP
278 Lee,Jar-How	*07:01	*13:36	*03:01	*01:01	*02:02	*06:09	*01:02	*02:01	*02:01	*04:01	SSP,RVSSOP
640 Lee,Kyung Wh	*07:01	*13:36			*02:02	*06:09	*01:02:01	*02:01			P-SBT
6649 Lim,Young Ae	*07	*13	*+	*+							P-SSP
274 Lo,Raymundo	*07	*13	*+	*+	*02	*06					SSP
731 Loewenthal,R	*07:01	*13:36			*02:02	*06					SBT,SSO
759 Lopez-Cepero	*0701/03+	*1336			*0202	*0609	*0102	*0201	*0201/+	*0401/+	RVSSO
23 Mah,Helen	*0701	*1336	*0301	*01	*0202	*0609	*0102	*0201	*0201	*0401	SSO,SSP
8029 Mani,Rama	*07	*13	*+	*+							P-SSP
206 McAlack-Hana	*07	*1336	*0301	*01	*0202	*0609					RVSSOP
9916 McIntyre,Joh	*07:01:01	*13:36	*03:01	*01:01/08	*02:02	*06:09					SSP,SBT
8042 Muncher,Lior	*0701	*1336			*0202	*0609					SSP,SSOP
8065 Padua,Flore	*07	*13	*01	*01	*02	*06					SSP
3648 Pereira,Noem	*07:01P	*13:36			*02:02	*06:09					RVSSO,SBT



B-CELL LINE TER-446

CTR DIRNAME	DRB1	DRB1X	DRB3	DRB4	DQB1	DQB1X	DQA1	DQA1X	DPB1	DPB1X	METHOD
3966 Permpikul&Ve	*07:01	*13:36	*03:01	*01:01	*02:02	*06:09					P-SSP
2400 Phelan, Donna	*0701	*1336	*03	*01	*0202	*0609					RSSO, SBT, SSP
3753 Reed, Elaine	*0701	*1336	*0301	*0101/03/06	*0202	*0609	*0102	*0201			SBT, SSO
3798 Reinsmoen, N	*07:01:01	*13:36	*03:01	*01:01:01:01	*02:02	*06:09	*01:02	*02:01	*02:01/+	*04:01	
1160 Rosen-Bronso	*07	*13:36	*03:01	*01	*02:02	*06:09					RVSSO, SSP
793 Rubocki, Rona	*07	*13	*+	*+	*02	*06					SSP
3519 Semana, Gilbe	*0701	*1336	*0301	*0101	*0202	*0609			*0201	*0401	SBT, P-SSP
8001 Sheikh, Maqso	*07:01/15+	*13:36	*03:01	*01:01	*02:02	*06:09			*02:01	*04:01	RVSSOP, SSP
735 Smith/MI	*0701	*1336	*0301	*0101/03/06	*0202	*0609	*0102	*0201	*0201/+	*0401/+	RVSSOP
746 Stamm, Luz	*07:01	*13:36	*03	*01	*02:02	*06:09					SSO, SSP, SBT
13 Tagliere, Jac	*07:01	*13:36	*03:01	*01:01:01:01	*02:02	*06:09					SSP
769 Tavoularis, S	*07:01	*13:36	*03:01	*01:01	*02:02	*06:09			*02:01:02	*04:01:01	SSO, SBT, SSP
5451 Tilanus, Marc	*07:01:01	*13:36	*03:01	*01:01:01:01	*02:02	*06:09	*01:02	*02:01	*02:01:02	*04:01:01	SBT
4021 Trachtenberg	*07	*13	*03	*01/*0201N	*0202	*0609/18					RVSSO
5462 Turner, E.V.	*07:01	*13:36	*03:01	*01:01	*02:02	*06:09			*02:01	*04:01/+	SEQ, SSO, SSP
3511 Zeevi, Adrian	*0701	*1336	*0301	*0101	*0202	*0609	*0102	*0201	*0201	*0401	RVSSOP, SSP

CTR DIRNAME	DR7	DR13	DR52	DR53	DQ2	DQ6	OTH1	OTH2
4492 Charron, D.	+	+	+	+	+	DQ1		
234 Gomez, Carmen	+	+	+	+	+	+		
5195 Gomez, Carmen	+	+	+	+	+	+		
910 Hahn, Amy B.	+	+	+	+	+	DQ1		
4908 Kvam, Vonnett	+	+	+	+	+	+		
54 McAlack, Robe	+	+	+	+	+	+		
8004 Pais, Maria L	+	+	+	+	+	+		
793 Rubocki, Rona	+	+	+	+	+	+		
8063 Shai, Isaac	NT							

B-CELL LINE TER-446

73 DNA LABS

73 LABS REPORTING DRB1

DRB1*07	36%
DRB1*0701	30%
DRB1*07:01	25%
DRB1*070101	3%
DRB1*07:01:01	5%
DRB1*07010101	1%
DRB1*07	100% TOTAL
DRB1*13	22%
DRB1*1336	41%
DRB1*13:36	37%
DRB1*13	100% TOTAL

68 LABS REPORTING DQB1

DQB1*02	20%
DQB1*0202	40%
DQB1*02:02	40%
DQB1*02	100% TOTAL
DQB1*06	24%
DQB1*0609	38%
DQB1*06:09	38%
DQB1*06	100% TOTAL

29 LABS REPORTING DQA1

DQA1*01	7%
DQA1*0102	55%
DQA1*01:02	31%
DQA1*01:02:01	4%
DQA1*01	97% TOTAL
DQA1*0201	59%
DQA1*02:01	41%
DQA1*02:01	100% TOTAL

51 LABS REPORTING DRB3

DRB3*+	20%
DRB3*0301	33%
DRB3*03:01	35%
DRB3*03	10%

51 LABS REPORTING DRB4

DRB4*+	18%
DRB4*0101	18%
DRB4*01:01	19%
DRB4*010101	2%
DRB4*01:01:01:01	6%
DRB4*01	37%

23 LABS REPORTING DPB1

DPB1*0201/+	13%
DPB1*02:01/+	4%
DPB1*0201	35%
DPB1*02:01	26%
DPB1*020102	9%
DPB1*02:01:02	13%
DPB1*0401/+	13%
DPB1*04:01/+	8%
DPB1*0401	35%
DPB1*04:01	22%
DPB1*040101	9%
DPB1*04:01:01	13%

8 SEROLOGY LABS

DR7	100%	DQ2	100%
DR13	100%	DQ1	25%
		DQ6	75%
DR52	100%	DQ1	100% TOTAL
DR53	100%		

	SERUM NO. 1033										SERUM NO. 1034										METHOD					
	% POS	% 8'S	B 8	A 1	A 2	A 1	A 3	A 0	A 3	A 6	B 6	B 2	% POS	% 8'S	B 8	B 8	B 4	B 5	B 9	A 3		B 3	B 7	B 3	B 3	B 5
Abbal, Michel	???	???	+	+	+	+	+	+	+	+	+	B59	???	???	+	+	+	+	+	+	+	+	+	+	B54	(3)
Al-Attas, Rab	???	???	+	+	+	+	+	+	+	+	+	B59	???	???	+	+	+	+	+	+	+	+	+	+	B54	( )
Alvarez & Ca	37	100	+	+	+	+	+	+	+	+	+	B49, B18, B35	47	100	+	+	+	+	+	+	+	+	+	+	B49, A25, A26>	(3)
Arnold, Angel	78	100	+	+	+	+	+	+	+	+	+	B35, B53, B72	93	100	+	+	+	+	+	+	+	+	+	+	B51	(3)
Baker, Judy	???	???	+	+	+	+	+	+	+	+	+		???	???	+	+	+	+	+	+	+	+	+	+	B54	(3)
Cecka, J. Mich	76	31	+	+	+	+	+	+	+	+	+		81	100	+	+	+	+	+	+	+	+	+	+	B51, B75	(4)
Charlton, Ron	90	???	+	+	+	+	+	+	+	+	+		98	???	+	+	+	+	+	+	+	+	+	+	B71, B54	(3)
Claas, F.H.J.	22	40	+	+	+	+	+	+	+	+	+		62	80	+	+	+	+	+	+	+	+	+	+	B14, B62, B41>	(6)
Cohen, JHM Pr	65	???	+	+	+	+	+	+	+	+	+		80	???	+	+	+	+	+	+	+	+	+	+	B67, B59	(3)
Dunk, Arthur	12	33	+	+	+	+	+	+	+	+	+		20	100	+	+	+	+	+	+	+	+	+	+		(6)
Dunn, Dale Dr	0	0	+	+	+	+	+	+	+	+	+		47	100	+	+	+	+	+	+	+	+	+	+	B61, B71	(4)
Dunn, Paul Dr	0	0	+	+	+	+	+	+	+	+	+		28	100	+	+	+	+	+	+	+	+	+	+		(2)
Eckels/CPMC,	42	???	+	+	+	+	+	+	+	+	+	A9, B18, B51	70	???	+	+	+	+	+	+	+	+	+	+	A25, A34, A68>	(4)
Elkhalifa MD	???	???	+	+	+	+	+	+	+	+	+	B59	???	???	+	+	+	+	+	+	+	+	+	+	B54	(3)
Esteves Kond	0	0	+	+	+	+	+	+	+	+	+		22	100	+	+	+	+	+	+	+	+	+	+		(1)
Esteves-Kond	81	100	+	+	+	+	+	+	+	+	+	A34, A68	97	100	+	+	+	+	+	+	+	+	+	+	B41, B42, B67>	(3)
Gandhi, Manis	39	???	+	+	+	+	+	+	+	+	+	B50, B35, B54, A2>	56	???	+	+	+	+	+	+	+	+	+	+	B51, A34, B62>	(3)
Gautreaux, Mi	88	???	+	+	+	+	+	+	+	+	+		88	???	+	+	+	+	+	+	+	+	+	+	B71, A34, A68	(3)
Hahn, Amy B.	10	50	+	+	+	+	+	+	+	+	+		74	100	+	+	+	+	+	+	+	+	+	+	B16, B14, B5, B35>	(4)
Han, Hoon Dr	40	???	+	+	+	+	+	+	+	+	+	B35	51	???	+	+	+	+	+	+	+	+	+	+		(3)
Hogan, Patric	0	0	+	+	+	+	+	+	+	+	+		28	100	+	+	+	+	+	+	+	+	+	+		(1)
Holdsworth, R	???	???	+	+	+	+	+	+	+	+	+		???	???	+	+	+	+	+	+	+	+	+	+	B54	(3)
Ichikawa MD,	64	???	+	+	+	+	+	+	+	+	+	B71, A30	???	???	+	+	+	+	+	+	+	+	+	+	A11, A1, B54, B51>	(3)
Klein, Jon MD	42	???	+	+	+	+	+	+	+	+	+		86	???	+	+	+	+	+	+	+	+	+	+	B51, B53, B59	(4)
Klein, Tirza	94	100	+	+	+	+	+	+	+	+	+	B7, B60, B39, B56>	88	100	+	+	+	+	+	+	+	+	+	+	B67, B71, B62>	(3)
Lardy, N.M. D	NT		+	+	+	+	+	+	+	+	+		35	100	+	+	+	+	+	+	+	+	+	+	B14	(2)
Loewenthal M	90	100	+	+	+	+	+	+	+	+	+	B7, B41, B60, B56>	100	100	+	+	+	+	+	+	+	+	+	+	B62, B35, B71>	(3)
MacCann, Eile	94	???	+	+	+	+	+	+	+	+	+	A2, A29, A30, A31	100	???	+	+	+	+	+	+	+	+	+	+	A68, A34, B51>	(3)
Mah, Helen	5	???	+	+	+	+	+	+	+	+	+	???	68	100	+	+	+	+	+	+	+	+	+	+	B51, B53, A25>	(4)
McAlack, Robe	84	100	+	+	+	+	+	+	+	+	+		86	100	+	+	+	+	+	+	+	+	+	+	B54	(3)
McAlack-Hana	84	100	+	+	+	+	+	+	+	+	+		86	100	+	+	+	+	+	+	+	+	+	+	B54	(3)
McCluskey, Ja	4	0	+	+	+	+	+	+	+	+	+	???	39	100	+	+	+	+	+	+	+	+	+	+		(6)
Meyer, Pieter	15	???	+	+	+	+	+	+	+	+	+	CW9, B59, B54	75	???	+	+	+	+	+	+	+	+	+	+	A68, A30, CW7>	(3)
Moses, Jon	9	0	+	+	+	+	+	+	+	+	+		31	100	+	+	+	+	+	+	+	+	+	+	B14	(1)
Mpuntsha, Loy	9	20	+	+	+	+	+	+	+	+	+		50	90	+	+	+	+	+	+	+	+	+	+	A34	(5)
Ozawa, Mikki	???	???	+	+	+	+	+	+	+	+	+		???	???	+	+	+	+	+	+	+	+	+	+	B54, B71	(3)
Pais, Maria L	6	???	+	+	+	+	+	+	+	+	+	A29	36	???	+	+	+	+	+	+	+	+	+	+	B54	(3)
Pereira, Noem	???	???	+	+	+	+	+	+	+	+	+	B59, B46	???	???	+	+	+	+	+	+	+	+	+	+	B51, B54	(3)
Permpikul &	6	25	+	+	+	+	+	+	+	+	+	???	8	100	+	+	+	+	+	+	+	+	+	+		(1)
Phelan, Donna	43	???	+	+	+	+	+	+	+	+	+	A9, B75	72	???	+	+	+	+	+	+	+	+	+	+	A28, A34, B14>	(6)
Pidwell/Aska	29	80	+	+	+	+	+	+	+	+	+		26	100	+	+	+	+	+	+	+	+	+	+		(2)
Rees, Tracey	???	???	+	+	+	+	+	+	+	+	+	B59	???	???	+	+	+	+	+	+	+	+	+	+	B51, A34	(3)
Rosen-Bronso	98	100	+	+	+	+	+	+	+	+	+		95	100	+	+	+	+	+	+	+	+	+	+	B54	(3)
Sage, Deborah	96	???	+	+	+	+	+	+	+	+	+		92	???	+	+	+	+	+	+	+	+	+	+	A25, A26, A34, B5>	(3)
Sinnott & Gu	???	???	+	+	+	+	+	+	+	+	+	A2, A9, A68, 5102>	???	???	+	+	+	+	+	+	+	+	+	+	A25, A26, A34>	(3)
Smith/MI,	40	???	+	+	+	+	+	+	+	+	+	A2, A68, A69	???	???	+	+	+	+	+	+	+	+	+	+	A25, A26, A34>	(3)
Suciu-Foca, N	15	33	+	+	+	+	+	+	+	+	+		53	???	+	+	+	+	+	+	+	+	+	+	B59, B51, B55	(4)
Turner, E.V.	???	???	+	+	+	+	+	+	+	+	+	B59	55	45	+	+	+	+	+	+	+	+	+	+	B16, B14, B22	(1)
			+	+	+	+	+	+	+	+	+		???	???	+	+	+	+	+	+	+	+	+	+	B51, B75, A34	(3)

\*\*\* 47 TYPING LABS \*\*\*

B8	70%	0.931
A1	68%	0.897
A24	64%	0.989
A11	62%	0.914
A3	47%	0.782
A23	45%	1.000
A80	45%	0.955
A36	43%	1.000
B62	26%	1.000
B76	26%	1.000
B59	15%	1.000
B35	13%	1.000
A2	9%	1.000
???	6%	1.000
A9	6%	1.000
A68	6%	1.000
B56	6%	1.000
A30	4%	1.000
B7	4%	1.000
B18	4%	1.000
B41	4%	1.000
B48	4%	1.000
B49	4%	1.000
B54	4%	1.000
B60	4%	1.000
A29	4%	0.833

\*\*\* 48 TYPING LABS \*\*\*

B8	85%	1.000
B18	77%	0.987
B64	65%	1.000
B65	63%	0.982
B39	63%	0.947
A33	52%	0.968
B78	44%	0.960
B37	38%	1.000
B38	35%	0.917
B52	29%	1.000
B51	27%	1.000
B54	27%	1.000
A34	23%	0.933
B14	15%	1.000
B71	15%	1.000
B62	13%	0.923
A68	13%	0.750
A25	10%	1.000
B35	10%	1.000
B55	10%	1.000
B59	10%	1.000
B41	8%	1.000
B67	8%	1.000
B75	8%	1.000
A26	6%	1.000
B53	6%	1.000
B63	6%	1.000
B16	6%	0.900
A28	4%	1.000
A66	4%	1.000
A74	4%	1.000
B5	4%	1.000
B72	4%	1.000
B22	4%	0.891

Methods:

- (1) - NIH std
- (2) - NIH ext
- (3) - Luminex/Flow
- (4) - Antiglobulin
- (5) - Elisa
- (6) - Other

\*\*\* 48 LABORATORIES REPLIED \*\*\*

\*\*\*\*\* NEXT SHIPMENT: NOV 10 2010 \*\*\*\*\*

Method: All

\*\*\*\*\* SERUM NO. 1033 \*\*\*\*\* SERUM NO. 1034 \*\*\*\*\*

	% B			% B B B B B					METHOD				
	POS	8'S	8	POS	8'S	8	9	4		4	5	8	
Claas,F.H.J.	22	40	+	62	80	+	+		+		+	B78,A33,B37,B62,B41,B63	(1)
Esteves Kond	0	0		22	100	+	+	+			+		(1)
Hogan,Patric	0	0		28	100	+	+	+					(1)
Moses,Jon	9	0	+	31	100	+	+	+	+	+			(1)
Permpikul &	6	25	???	8	100	+							(1)
Suciu-Foca,N	15	33	+	55	45	+			+		+	B16,B22	(1)

\*\*\* 6 TYPING LABS \*\*\*

B8	50%	0.765
???	17%	1.000
A1	17%	1.000
A24	17%	1.000

\*\*\* 6 TYPING LABS \*\*\*

B8	83%	1.000
B39	83%	0.909
B14	50%	1.000
B64	50%	1.000
B18	33%	1.000
B65	33%	0.800
A33	17%	1.000
B37	17%	1.000
B41	17%	1.000
B63	17%	1.000
B78	17%	1.000
B16	17%	0.890
B22	17%	0.890
B62	17%	0.857

\*\*\* 6 LABORATORIES REPLIED \*\*\*

Method: NIH-std

\*\*\*\*\* SERUM NO. 1033 \*\*\*\*\* SERUM NO. 1034 \*\*\*\*\*

	% A				% B B					METHOD		
	POS	8'S	8	4	1	POS	8'S	8	9		5	
Dunn,Paul Dr	0	0				28	100	+	+	+	B64	(2)
Lardy,N.M. D	NT					35	100	+	+		B14	(2)
Pidwell/Aska	29	80	+	+	+	26	100	+	+	+		(2)

\*\*\* 2 TYPING LABS \*\*\*

B8	50%	1.000
A24	50%	0.800
A1	50%	0.625

\*\*\* 3 TYPING LABS \*\*\*

B8	100%	1.000
B39	100%	1.000
B65	67%	1.000
B14	33%	1.000
B64	33%	1.000

\*\*\* 3 LABORATORIES REPLIED \*\*\*

\*\*\*\*\* NEXT SHIPMENT: NOV 10 2010 \*\*\*\*\*

Method: NIH-ext

	SERUM NO. 1033										SERUM NO. 1034										METHOD		
	% POS	% 8'S	A 1	A 1	A 2	A 4	A 8	A 0	A 6	A 3	A 3	B 2	B 7	B 6	B 6	A 3	B 3	B 3	B 3	B 3		B 5	
Abbal, Michel	???	???	+	+	+	+	+	+	+	+	+	B59	???	???	+	+	+	+	+	+	+	(L-3)	
Alvarez & Ca	37	100	+	+	+	+					+	B49, B18, B35	47	100	+							B49, A25, A26>	(F-3)
Arnold, Angel	78	100	+	+	+						+	B35, B53, B72	93	100	+	+	+	+	+			B51, B52	(L-3)
Baker, Judy	???	???	+	+	+	+	+	+	+	+	+		???	???	+	+	+	+	+	+	+		(L-3)
Cecka, J. Mich	76	100	+	+	+	+	+	+	+	+	+	B59	93	100	+	+	+	+	+			B51, B75	(L-3)
Charlton, Ron	90	???	+	+	+	+	+	+	+	+	+		98	???	+	+	+					B52, B71	(L-3)
Cohen, JHM Pr	65	???	+	+	+	+	+	+	+	+	+		80	???	+	+	+	+	+	+	+	B67, B59	(L-3)
Dunn, Paul Dr	???	???	+	+	+	+	+	+	+	+	+	B59	???	???	+	+	+	+	+			B51, B52	(L-3)
Eckels/CPMC,	86	???	+	+	+						+	A2, A68, A9	96	???								A25, A26, A28>	(LF-3)
Elkhalifa MD	???	???	+	+	+	+	+	+	+	+	+	B59	???	???	+	+	+	+	+	+	+		(L-3)
Esteves-Kond	81	100	+	+	+						+	A34, A68	97	100	+	+	+	+	+	+	+	B41, B42, B67>	(F-3)
Gandhi, Manis	39	???		+	+	+					+	B50, B35, B54, A2>	56	???	+	+	+					B51, A34, B62>	(L-3)
Gautreaux, Mi	88	???	+	+	+	+	+	+	+	+	+		88	???	+	+	+	+				B71, A34, A68>	(L-3)
Hahn, Amy B.	13	???	+	+	+	+	+	+	+	+	+		53	???	+	+	+	+				B71	(L-3)
Han, Hoon Dr	40	???	+	+	+	+	+	+	+	+	+	B35	51	???	+	+	+	+	+	+	+	B52	(L-3)
Hogan, Patric	16	???	+	+	+	+	+	+	+	+	+		38	???	+	+	+					B14, A34, B51	(L-3)
Holdsworth, R	???	???	+	+	+	+	+	+	+	+	+		???	???	+	+	+	+	+	+	+	B52	(L-3)
Ichikawa MD,	64	???	+	+	+						+	B71, A30	???	???								A11, A1, B51, B52>	(L-3)
Klein, Tirza	94	100				+						B7, B60, B39, B56>	88	100	+	+	+					B67, B71, B62>	(L-3)
Loewenthal M	90	100	+			+					+	B7, B41, B60, B56>	100	100	+	+	+					B62, B35, B71>	(L-3)
MacCann, Eile	94	???	+	+	+	+					+	A2, A29, A30, A31	100	???	+	+	+					A68, A34, B51>	(L-3)
Mah, Helen	???	???	+			+	+	+	+	+	+	B59	???	???	+	+	+	+	+	+	+	B71	(L-3)
McAlack, Robe	84	100	+	+	+	+	+	+	+	+	+		86	100	+	+	+	+	+	+	+		(L-3)
McAlack-Hana	84	100	+	+	+	+	+	+	+	+	+		86	100	+	+	+	+	+	+	+		(L-3)
McCluskey, Ja	13	???	+	+	+	+					+	8001	36	???	+	+	+					B14, A34, B51	(L-3)
Meyer, Pieter	15	???	+	+	+	+	+	+	+	+	+	CW9, B59, B54	75	???	+			+				A68, A30, CW7>	(L-3)
Ozawa, Mikki	???	???	+	+	+	+	+	+	+	+	+		???	???	+	+	+	+	+	+	+	B71	(L-3)
Pais, Maria L	6	???	+			+						A29	36	???	+	+	+	+	+	+	+	B52	(L-3)
Pereira, Noem	???	???	+	+	+	+	+	+	+	+	+	B59, B46	???	???	+	+	+	+	+	+	+	B52, B51	(L-3)
Permpikul &	???	???	+	+	+						+	B35, B53	???	???	+	+	+	+	+			B52, B55, B56	(L-3)
Phelan, Donna	22	???	+	+	+	+	+	+	+	+	+	A9, B21, B46, B48	52	???	+	+	+	+				A10, A28, A74>	(L-3)
Pidwell/Aska	84	100	+	+	+	+	+	+	+	+	+	B59	85	100	+	+	+	+	+			B51, B52, B77	(F-3)
Rees, Tracey	???	???	+	+	+	+	+	+	+	+	+	B59	???	???	+	+	+	+	+	+	+	B51, A34, B52	(L-3)
Rosen-Bronso	98	100	+	+	+	+	+	+	+	+	+		95	100	+	+	+	+	+	+	+		(LF-3)
Sage, Deborah	96	???	+	+	+	+	+	+	+	+	+	A2, A9, A68, 5102>	92	???	+							A25, A26, A34, B5>	(L-3)
Sinnott & Gu	???	???	+	+	+	+	+	+	+	+	+	A2, A68, A69	???	???	+	+						A25, A26, A34>	(L-3)
Smith/MI,	87	???	+	+	+	+	+	+	+	+	+	B59	87	???	+	+	+	+	+	+	+		(L-3)
Suciu-Foca, N	100	???	+	+	+	+	+	+	+	+	+		100	???	+	+	+	+	+	+	+	B71	(L-3)
Turner, E.V.	???	???	+	+	+	+	+	+	+	+	+	B59	???	???	+	+	+	+	+	+	+	B51, B75, A34	(L-3)

(3) - L-Luminex, F-Flow

\*\*\*\*\* SERUM NO.1033 \*\*\*\*\* SERUM NO.1034 \*\*\*\*\*

\*\*\* 39 TYPING LABS \*\*\*

A1	95%	0.963
A11	90%	1.000
A24	87%	1.000
B8	79%	1.000
A36	77%	1.000
A80	77%	0.968
A3	74%	0.803
A23	72%	1.000
B62	49%	1.000
B76	49%	1.000
B59	28%	1.000
B35	18%	1.000
A2	13%	1.000
A68	10%	1.000
A9	8%	1.000
B48	8%	1.000
B56	8%	1.000
A30	5%	1.000
B7	5%	1.000
B41	5%	1.000
B46	5%	1.000
B49	5%	1.000
B53	5%	1.000
B54	5%	1.000
B60	5%	1.000
A29	5%	0.833

\*\*\* 39 TYPING LABS \*\*\*

B18	92%	1.000
B8	85%	1.000
B78	74%	0.971
B64	67%	1.000
B65	64%	1.000
A33	64%	0.974
B39	62%	1.000
B37	54%	1.000
B38	49%	1.000
B54	46%	1.000
B51	33%	1.000
B52	33%	1.000
A34	28%	0.923
B71	23%	1.000
A68	15%	0.750
B14	13%	1.000
A25	10%	1.000
A26	10%	1.000
B55	10%	1.000
B62	10%	1.000
B67	10%	1.000
B75	10%	1.000
A28	8%	1.000
A74	8%	1.000
B35	8%	1.000
B41	8%	1.000
6601	5%	1.000
A66	5%	1.000
A69	5%	1.000
B59	5%	1.000
B63	5%	1.000
B72	5%	1.000

\*\*\* 39 LABORATORIES REPLIED \*\*\*

\*\*\*\*\* NEXT SHIPMENT: NOV 10 2010 \*\*\*\*\*

Method: Luminex/Flow

\*\*\*\*\* SERUM NO. 1033 \*\*\*\*\* SERUM NO. 1034 \*\*\*\*\*

	SERUM NO. 1033				SERUM NO. 1034										METHOD						
	% POS	% 8'S	B 8	A 4	A 1	A 1	A 2	% POS	% 8'S	B 8	B 8	B 5	B 1	B 3		B 6	B 5	B 3	A 3	B 3	B 5
Cecka, J. Mich	76	31	+	+	+	+	A3	81	100	+	+	+	+	+	+	+	+	+	+	B75, B37	(4)
Dunn, Dale Dr	0	0						47	100	+	+	+	+	+	+	+	+	+	+	B61, B71	(4)
Eckels/CPMC,	42	???	+	+		+	A9, B18, B51	70	???	+	+	+	+	+	+	+	+	+	+	A25, A34, A68>	(4)
Hahn, Amy B.	10	50	+					74	100	+	+									B16, B14, B5, B35	(4)
Klein, Jon MD	42	???	+	+	+	+		86	???	+	+	+	+	+	+	+	+	+	+	B53	(4)
Mah, Helen	5	???					???	68	100	+	+	+	+	+	+	+	+	+	+	B53, A25, B37>	(4)
Smith/MI,	40	???	+	+	+	+		53	???	+	+	+	+	+	+	+	+	+	+	B55	(4)
Suciu-Foca, N	26	33	+	+	+	+		58	36	+	+									B16, B14, B37>	(4)

\*\*\*\*\* SERUM NO.1033 \*\*\*\*\* SERUM NO.1034 \*\*\*\*\*

\*\*\* 8 TYPING LABS \*\*\*

A24	63%	1.000
B8	63%	0.857
A1	50%	0.875
A11	50%	0.789
A23	38%	1.000
???	13%	1.000
A9	13%	1.000
B18	13%	1.000
B51	13%	1.000
A3	13%	0.750

\*\*\* 8 TYPING LABS \*\*\*

B8	88%	1.000
B18	88%	1.000
B51	63%	1.000
B65	63%	1.000
B38	63%	0.833
B39	50%	1.000
B52	50%	1.000
B64	50%	1.000
A33	50%	0.933
B37	38%	1.000
B59	38%	1.000
A25	25%	1.000
B14	25%	1.000
B16	25%	1.000
B35	25%	1.000
B53	25%	1.000
B55	25%	1.000
A34	13%	1.000
A68	13%	1.000
B5	13%	1.000
B22	13%	1.000
B61	13%	1.000
B62	13%	1.000
B71	13%	1.000
B75	13%	1.000

\*\*\* 8 LABORATORIES REPLIED \*\*\*

\*\*\*\*\* NEXT SHIPMENT: NOV 10 2010 \*\*\*\*\*

Method: Antiglobulin



\*\*\*\*\* SERUM NO. 1033 \*\*\*\*\* SERUM NO. 1034 \*\*\*\*\*

	% POS 8'S		SERUM NO. 1033										% POS 8'S		SERUM NO. 1034										METHOD	
			B	2	A	A	1	6	B	5	3	A	A	B	6	B	B	3	1	5	B	5	3	3		3
Esteves-Kond	46	0	+	+	+						+	+	75	100	+	+	+			+			+	+	A33,B41,B42>	(5)
Hahn, Amy B.	10	???	+	+	+	+	+	+	+	+	+	+	40	???	+	+		+	+	+	+		+		B54,B78,B71	(5)
McAlack, Robe	28	0	+	+	+	+	+	+			+		50	0	+	+	+	+	+		+	+	+	+	B22,B70	(5)
Mpuntscha, Loy	9	20	+										50	90	+	+	+	+	+					+	A33	(5)

\*\*\*\*\* SERUM NO.1033 \*\*\*\*\* SERUM NO.1034 \*\*\*\*\*

\*\*\* 4 TYPING LABS \*\*\*

A23	75%	1.000
A24	75%	1.000
B8	75%	1.000
A11	75%	0.857
A3	50%	1.000
B59	50%	1.000
B62	50%	1.000
A36	50%	0.750
A1	50%	0.625
A80	25%	1.000
B72	25%	1.000

\*\*\* 4 TYPING LABS \*\*\*

B8	100%	1.000
B64	100%	1.000
B18	75%	1.000
B37	75%	1.000
B65	75%	1.000
A34	50%	1.000
B38	50%	1.000
B39	50%	1.000
B51	50%	1.000
B52	50%	1.000
A33	50%	0.923
B22	25%	1.000
B41	25%	1.000
B42	25%	1.000
B49	25%	1.000
B54	25%	1.000
B70	25%	1.000
B71	25%	1.000
B78	25%	1.000

\*\*\* 4 LABORATORIES REPLIED \*\*\*

\*\*\*\*\* NEXT SHIPMENT: NOV 10 2010 \*\*\*\*\*

Method: Elisa

	SERUM NO. 1035										SERUM NO. 1036										METHOD				
	% POS	% 8'S	B 8	B 1	B 6	B 3	B 6	A 3	B 6	B 3	B 3	B 5	% POS	% 8'S	B 5	B 8	B 1	B 6	A 3	B 3		B 5	B 3	B 7	B 7
Abbal, Michel	???	???	+	+	+	+	+	+	+	+	+	???	???	+	+	+	+	+	+	+	+	+	+	+	(3)
Al-Attas, Rab	???	???	+	+	+	+	+	+	+	+	+	???	???	+	+	+	+	+	+	+	+	+	+	+	( )
Alvarez & Ca	28	100	+	+	+			+				A68, A34, B55	25	100	+	+	+	+							(3)
Arnold, Angel	78	100	+	+	+	+	+	+	+	+	+	A23	65	100	+	+	+	+	+						(3)
Baker, Judy	???	???	+	+	+	+	+	+	+	+	+		???	???	+	+	+	+	+	+	+	+	+	+	(3)
Cecka, J. Mich	67	100	+	+	+	+	+	+	+	+	+	A34, B42	40	100	+	+	+	+	+						(4)
Charlton, Ron	96	???	+					+	+	+	+	A34	92	???	+	+	+	+	+	+	+	+	+		(3)
Claas, F.H.J.	65	80	+	+				+				B14, A31, A74>	20	0		+	+						+		(6)
Cohen, JHM Pr	71	???		+	+	+	+	+	+	+	+	B55	44	???	+	+	+	+	+	+	+	+	+		(3)
Dunk, Arthur	20	100	+		+	+	+						12	100	+		+								(6)
Dunn, Dale Dr	20	100	+					+	+	+		B71	15	100	+	+		+							(4)
Dunn, Paul Dr	24	100	+		+	+	+						18	100	+					+					(2)
Eckels/CPMC,	53	???	+	+	+	+	+				+	B14, B42, CW6	30	???	+	+	+	+							(4)
Elkhalifa MD	???	???	+	+	+	+	+	+	+	+	+		???	???	+	+	+	+	+	+	+	+	+		(3)
Esteves Kond	17	100	+	+	+	+	+						7	100	+		+								(1)
Esteves-Kond	81	100	+	+	+	+	+		+	+	+	B41, B42	63	0	+	+	+	+	+	+	+	+			(3)
Gandhi, Manis	57	???		+	+	+			+			A34, A69, A74>	37	???	+		+	+	+	+					(3)
Gautreaux, Mi	84	???	+	+	+	+			+	+	+	A68	58	???	+	+	+	+	+	+	+				(3)
Hahn, Amy B.	46	100	+	+								B16, B14, B59	26	67	+	+	+								(4)
Han, Hoon Dr	31	???	+	+	+	+	+		+		+	B55	42	???	+	+	+	+	+	+			+		(3)
Hogan, Patric	26	100	+			+	+						5	100	+		+								(1)
Holdsworth, R	???	???	+	+	+	+	+	+	+	+	+		???	???	+	+	+	+	+	+	+	+	+		(3)
Ichikawa MD,	58	???						+			+	A1, CW7, B59, B55>	17	???	+	+	+	+	+	+	+	+	+		(3)
Klein, Jon MD	60	???	+	+	+	+	+	+			+	B59, A68	46	???	+	+	+	+	+	+	+	+	+		(4)
Klein, Tirza	84	100	+	+	+	+			+		+	B81, B55, B41>	64	100	+	+	+		+		+	+	+		(3)
Lardy, N.M. D	27	100	+			+						B16	12	100	+										(2)
Loewenthal M	100	100	+	+							+	B55, B7, B81, B41>	100	100		+	+		+	+		+	+		(3)
MacCann, Eile	92	???	+	+	+			+			+	A68, A34, B55>	94	???	+	+	+	+	+	+		+			(3)
Mah, Helen	48	100	+		+	+	+	+	+	+	+	B49, B55, A74	17	100	+	+	+	+							(4)
McAlack, Robe	76	100	+	+	+	+	+	+	+	+	+		65	100	+	+	+	+	+	+	+	+	+		(3)
McAlack-Hana	76	100	+	+	+	+	+	+	+	+	+		65	100	+	+	+	+	+	+	+	+	+		(3)
McCluskey, Ja	30	100	+	+	+	+	+						13	100	+		+								(6)
Meyer, Pieter	44	???	+	+	+	+		+	+		+	CW8, A34	24	???	+		+	+	+			+	+		(3)
Moses, Jon	28	100	+		+	+	+					B14	14	50	+		+								(1)
Mpuntsha, Loy	39	90	+	+	+	+	+	+	+			B47	9	0	+		+	+							(5)
Ozawa, Mikki	???	???	+	+	+	+	+	+	+	+	+		???	???	+	+	+	+	+	+	+	+	+		(3)
Pais, Maria L	32	???	+	+	+	+	+	+	+	+	+		16	???	+	+	+	+	+	+	+	+	+		(3)
Pereira, Noem	???	???	+	+	+	+	+	+	+	+	+	CW5	???	???	+	+	+	+	+	+	+	+	+		(3)
Permpikul &	6	100			+								6	100											(1)
Phelan, Donna	64	???	+	+				+	+			B14, B16, B59>	20	???		+	+	+							(6)
Pidwell/Aska	26	100	+		+	+							9	100	+										(2)
Rees, Tracey	???	???	+	+	+	+	+	+	+	+	+	A34, B42	???	???	+	+	+	+	+	+	+	+	+		(3)
Rosen-Bronso	90	100	+	+	+	+	+	+	+	+	+		68	100	+	+	+	+	+	+	+	+	+		(3)
Sage, Deborah	92	???	+									A25, A26, A34, B7>	90	???	+	+	+	+	+	+	+	+	+		(3)
Sinnott & Gu	???	???						+				A25, A26, A29>	???	???		+	+	+	+		+				(3)
Smith/MI,	60	???	+	+		+		+		+	+	B59, B42, B55>	22	???	+	+	+	+	+	+					(4)
Suciu-Foca, N	38	47	+	+								B14, B22, B16	12	4	+	+	+								(1)
Turner, E.V.	???	???	+	+	+	+	+	+	+	+	+	A34, A68, A69	???	???	+	+	+	+	+	+					(3)

\*\*\* 48 TYPING LABS \*\*\*

B8	88%	1.000
B18	75%	0.944
B65	73%	0.984
B39	73%	0.938
B64	63%	1.000
A33	60%	1.000
B67	46%	1.000
B38	44%	1.000
B37	40%	0.964
B54	35%	1.000
A34	21%	1.000
B55	19%	1.000
B14	15%	1.000
B42	13%	1.000
B59	10%	1.000
A68	10%	0.909
B16	8%	0.933
A29	6%	1.000
A32	6%	1.000
A74	6%	1.000
B41	6%	1.000
B71	6%	0.750
A25	4%	1.000
A26	4%	1.000
A28	4%	1.000
A66	4%	1.000
A69	4%	1.000
B7	4%	1.000
B47	4%	1.000
B51	4%	1.000
B81	4%	1.000
A31	4%	0.900

\*\*\* 48 TYPING LABS \*\*\*

B65	81%	0.971
B18	73%	0.986
B8	73%	0.881
B64	71%	1.000
A33	58%	0.939
B39	56%	0.974
B54	42%	1.000
B37	29%	1.000
B73	25%	1.000
A34	17%	1.000
B78	17%	1.000
B51	17%	0.941
B38	17%	0.909
CW5	15%	1.000
B14	13%	0.950
A68	13%	0.933
A32	8%	1.000
A69	6%	1.000
B27	6%	1.000
B41	6%	1.000
B55	6%	1.000
B59	6%	1.000
A28	4%	1.000
A74	4%	1.000
B67	4%	1.000
B71	4%	1.000
B16	4%	0.636
CW8	4%	0.600

Methods:

- (1) - NIH std
- (2) - NIH ext
- (3) - Luminex/Flow
- (4) - Antiglobulin
- (5) - Elisa
- (6) - Other

\*\*\* 48 LABORATORIES REPLIED \*\*\*

\*\*\*\*\* NEXT SHIPMENT: NOV 10 2010 \*\*\*\*\*

Method: All

\*\*\*\*\* SERUM NO. 1035 \*\*\*\*\* SERUM NO. 1036 \*\*\*\*\*

	% POS 8'S		B B B B B					% POS 8'S		B B B B					METHOD	
	8	9	3	6	1	1	6	5	4	4	1	8	8			
Claas,F.H.J.	65	80	+	+	+	+		A33,A31,A74,B37,A32,B47	20	0		+	+	+	B78	(1)
Esteves Kond	17	100	+		+	+			7	100		+	+			(1)
Hogan,Patric	26	100	+	+	+				5	100		+	+			(1)
Moses,Jon	28	100	+	+	+		+		14	50		+	+	+		(1)
Permpikul &	6	100							6	100					A25	(1)
Suciu-Foca,N	38	47	+			+	+	B22,B16	12	4		+	+	+		(1)

\*\*\* 6 TYPING LABS \*\*\*

B8	83%	1.000
B39	67%	1.000
B14	50%	1.000
B64	50%	1.000
B18	50%	0.833
B65	33%	0.800
A32	17%	1.000
A33	17%	1.000
A74	17%	1.000
B16	17%	1.000
B22	17%	1.000
B37	17%	1.000
B47	17%	1.000
A31	17%	0.889

\*\*\* 6 TYPING LABS \*\*\*

B14	50%	1.000
B64	50%	1.000
B65	50%	0.857
B18	33%	1.000
B8	33%	0.636
A25	17%	1.000
B78	17%	1.000

\*\*\* 6 LABORATORIES REPLIED \*\*\*

Method: NIH-std

\*\*\*\*\* SERUM NO. 1035 \*\*\*\*\* SERUM NO. 1036 \*\*\*\*\*

	% POS 8'S		B B			% POS 8'S		METHOD			
	8	9	3	6	5	5					
Dunn,Paul Dr	24	100	+	+	+	B64	18	100	+	B39	(2)
Lardy,N.M. D	27	100	+	+		B16	12	100		B14	(2)
Pidwell/Aska	26	100	+	+	+		9	100	+		(2)

\*\*\* 3 TYPING LABS \*\*\*

B8	100%	1.000
B39	100%	1.000
B65	67%	1.000
B16	33%	1.000
B64	33%	1.000

\*\*\* 3 TYPING LABS \*\*\*

B65	67%	1.000
B14	33%	1.000
B39	33%	1.000

\*\*\* 3 LABORATORIES REPLIED \*\*\*

\*\*\*\*\* NEXT SHIPMENT: NOV 10 2010 \*\*\*\*\*

Method: NIH-ext

SERUM NO. 1035											SERUM NO. 1036											METHOD
%	%	B	A	B	B	B	B	B	B	B	%	%	B	A	B	B	B	B	B	B	C	
POS	8'S	1	3	3	6	6	6	5	3	3	POS	8'S	1	3	5	9	4	4	3	7	5	
Abbal, Michel	???	???	+	+	+	+	+	+	+	+	???	???	+	+	+	+	+	+	+	+	B78	(L-3)
Alvarez & Ca	28	100	+	+	+	+	+	+	+	+	A68, A34, B55	25	100	+	+	+	+	+	+	+	A68, A34, B51>	(F-3)
Arnold, Angel	78	100	+	+	+	+	+	+	+	+	A23	65	100	+	+	+	+	+	+	+	B38, B51, A68	(L-3)
Baker, Judy	???	???	+	+	+	+	+	+	+	+		???	???	+	+	+	+	+	+	+	B78	(L-3)
Cecka, J. Mich	???	100	+	+	+	+	+	+	+	+	A69, B42	???	100	+	+	+	+	+	+	+	B27, B51, B78	(L-3)
Charlton, Ron	96	???	+	+	+	+	+	+	+	+	A34	92	???	+	+	+	+	+	+	+		(L-3)
Cohen, JHM Pr	71	???	+	+	+	+	+	+	+	+	B55	44	???	+	+	+	+	+	+	+		(L-3)
Dunn, Paul Dr	???	???	+	+	+	+	+	+	+	+	B42	???	???	+	+	+	+	+	+	+	B51	(L-3)
Eckels/CPMC,	93	???	+	+	+	+	+	+	+	+	A25, A28, A29>	88	???	+	+	+	+	+	+	+	A28, A32, A34>	(LF-3)
Elkhalifa MD	???	???	+	+	+	+	+	+	+	+		???	???	+	+	+	+	+	+	+		(L-3)
Esteves-Kond	81	100	+	+	+	+	+	+	+	+	B41, B42	63	0	+	+	+	+	+	+	+	B38	(F-3)
Gandhi, Manis	57	???	+	+	+	+	+	+	+	+	A34, A69, A74>	37	???	+	+	+	+	+	+	+	B51, B82, A32>	(L-3)
Gautreaux, Mi	84	???	+	+	+	+	+	+	+	+	A68	58	???	+	+	+	+	+	+	+	A68, A34, CW8	(L-3)
Hahn, Amy B.	55	???	+	+	+	+	+	+	+	+		37	???	+	+	+	+	+	+	+		(L-3)
Han, Hoon Dr	31	???	+	+	+	+	+	+	+	+	B55	42	???	+	+	+	+	+	+	+	B63, B78	(L-3)
Hogan, Patric	36	???	+	+	+	+	+	+	+	+	CW8, CW5, B14>	13	???	+	+	+	+	+	+	+	CW8, B14, B78>	(L-3)
Holdsworth, R	???	???	+	+	+	+	+	+	+	+		???	???	+	+	+	+	+	+	+		(L-3)
Ichikawa MD,	58	???	+	+	+	+	+	+	+	+	A1, CW7, B59, B55>	17	???	+	+	+	+	+	+	+	B58	(L-3)
Klein, Tirza	84	100	+	+	+	+	+	+	+	+	B81, B55, B41>	64	100	+	+	+	+	+	+	+	B78, B41, B55>	(L-3)
Loewenthal M	100	100	+	+	+	+	+	+	+	+	B55, B7, B81, B41>	100	100	+	+	+	+	+	+	+	B41, B55, B78>	(L-3)
MacCann, Eile	92	???	+	+	+	+	+	+	+	+	A68, A34, B55>	94	???	+	+	+	+	+	+	+	A68, A34, B51	(L-3)
Mah, Helen	???	???	+	+	+	+	+	+	+	+	B55	???	???	+	+	+	+	+	+	+	B78	(L-3)
McAlack, Robe	76	100	+	+	+	+	+	+	+	+		65	100	+	+	+	+	+	+	+		(L-3)
McAlack-Hana	76	100	+	+	+	+	+	+	+	+		65	100	+	+	+	+	+	+	+		(L-3)
McCluskey, Ja	33	???	+	+	+	+	+	+	+	+	CW8, CW5, B14>	10	???	+	+	+	+	+	+	+	CW8, B14, B78	(L-3)
Meyer, Pieter	44	???	+	+	+	+	+	+	+	+	CW8, A34	24	???	+	+	+	+	+	+	+	B78, A69, B55>	(L-3)
Ozawa, Mikki	???	???	+	+	+	+	+	+	+	+		???	???	+	+	+	+	+	+	+	B38	(L-3)
Pais, Maria L	32	???	+	+	+	+	+	+	+	+		16	???	+	+	+	+	+	+	+		(L-3)
Pereira, Noem	???	???	+	+	+	+	+	+	+	+	CW5	???	???	+	+	+	+	+	+	+	B27, B51	(L-3)
Permpikul &	???	???	+	+	+	+	+	+	+	+	B55, A24	???	???	+	+	+	+	+	+	+	B38, B78, B52	(L-3)
Phelan, Donna	54	???	+	+	+	+	+	+	+	+	B16, B14, B59>	29	???	+	+	+	+	+	+	+	B14, B16, B59, B5>	(L-3)
Pidwell/Aska	90	100	+	+	+	+	+	+	+	+	A34, CX12	67	100	+	+	+	+	+	+	+	B51	(F-3)
Rees, Tracey	???	???	+	+	+	+	+	+	+	+	A34, B42	???	???	+	+	+	+	+	+	+	B51, B78	(L-3)
Rosen-Bronso	90	100	+	+	+	+	+	+	+	+		68	100	+	+	+	+	+	+	+	B38	(LF-3)
Sage, Deborah	92	???	+	+	+	+	+	+	+	+	A25, A26, A34, B7>	90	???	+	+	+	+	+	+	+	A34, A32, A74>	(L-3)
Sinnott & Gu	???	???	+	+	+	+	+	+	+	+	A25, A26, A29>	???	???	+	+	+	+	+	+	+	A32, A34, A68>	(L-3)
Smith/MI,	89	???	+	+	+	+	+	+	+	+		65	???	+	+	+	+	+	+	+		(L-3)
Suciu-Foca, N	100	???	+	+	+	+	+	+	+	+	B55	100	???	+	+	+	+	+	+	+		(L-3)
Turner, E.V.	???	???	+	+	+	+	+	+	+	+	A34, A68, A69	???	???	+	+	+	+	+	+	+	A34, A69, A68>	(L-3)

(3) - L-Luminex, F-Flow

\*\*\*\*\* SERUM NO.1035 \*\*\*\*\* SERUM NO.1036 \*\*\*\*\*

\*\*\* 39 TYPING LABS \*\*\*

B18	90%	1.000
A33	85%	1.000
B8	85%	1.000
B39	77%	0.973
B65	74%	1.000
B67	72%	1.000
B64	64%	1.000
B54	59%	1.000
B38	54%	1.000
B37	54%	0.957
A34	28%	1.000
B55	26%	1.000
B42	18%	1.000
B14	13%	1.000
A68	10%	0.900
A25	8%	1.000
A28	8%	1.000
A29	8%	1.000
A32	8%	1.000
A66	8%	1.000
A69	8%	1.000
B41	8%	1.000
CW5	8%	1.000
CW8	8%	1.000
A26	5%	1.000
A31	5%	1.000
B7	5%	1.000
B16	5%	1.000
B51	5%	1.000
B59	5%	1.000
B71	5%	1.000
B81	5%	1.000
A24	5%	0.875

\*\*\* 39 TYPING LABS \*\*\*

B18	92%	1.000
A33	90%	1.000
B8	90%	1.000
B65	82%	1.000
B39	82%	0.976
B64	74%	1.000
B54	69%	1.000
B37	44%	1.000
B73	44%	1.000
CW5	33%	1.000
B78	31%	1.000
B51	26%	1.000
A34	23%	1.000
A68	18%	0.938
B38	18%	0.909
B27	15%	1.000
A32	13%	1.000
A69	10%	1.000
B14	10%	1.000
CW8	10%	0.714
A28	8%	1.000
B55	8%	1.000
B16	5%	1.000
B41	5%	1.000
B52	5%	1.000
B67	5%	1.000
B71	5%	1.000

\*\*\* 39 LABORATORIES REPLIED \*\*\*

\*\*\*\*\* NEXT SHIPMENT: NOV 10 2010 \*\*\*\*\*

Method: Luminex/Flow

\*\*\*\*\* SERUM NO. 1035 \*\*\*\*\* SERUM NO. 1036 \*\*\*\*\*

	% 8'S		B	B	B	B	B	B	A	B	B	% 8'S		B	B	B	B	A	B	B	B	B	METHOD		
	POS	8'S	8	9	8	5	4	8	7	3	9	2	POS	8'S	8	8	5	4	9	3	9	8		6	4
Cecka, J. Mich	67	100	+	+	+	+	+	+		+		B54, A34	40	100	+	+	+	+	+	+			B41, B42	(4)	
Dunn, Dale Dr	20	100	+	+		+	+					B71	15	100	+		+	+						(4)	
Eckels/CPMC,	53	???	+	+	+	+	+				+	B14, CW6	30	???	+	+	+	+						(4)	
Hahn, Amy B.	46	100	+		+						+	B16, B14	26	67	+	+				+		+	+		(4)
Klein, Jon MD	60	???	+	+	+	+	+	+	+	+		A68	46	???	+	+	+	+	+	+	+	+		B54	(4)
Mah, Helen	48	100	+	+		+	+	+	+	+		B49, B55, A74	17	100	+	+	+	+					B51, A74	(4)	
Smith/MI,	60	???	+	+	+		+	+	+	+	+	B55, A29	22	???	+	+	+	+	+	+				(4)	
Suciu-Foca, N	42	25	+		+				+			B14, B16, B22	16	33	+	+						+	+		(4)

\*\*\*\*\* SERUM NO.1035 \*\*\*\*\* SERUM NO.1036 \*\*\*\*\*

\*\*\* 8 TYPING LABS \*\*\*

B8	100%	1.000
B18	75%	1.000
B39	75%	0.833
B38	63%	1.000
B64	63%	1.000
B65	63%	1.000
A33	50%	1.000
B37	50%	1.000
B14	38%	1.000
B42	38%	1.000
B59	38%	1.000
B55	25%	1.000
B16	25%	0.900
A29	13%	1.000
A34	13%	1.000
A68	13%	1.000
A74	13%	1.000
B22	13%	1.000
B49	13%	1.000
B54	13%	1.000
CW6	13%	1.000
B71	13%	0.500

\*\*\* 8 TYPING LABS \*\*\*

B8	100%	0.810
B18	88%	0.957
B64	75%	1.000
B65	75%	1.000
B39	38%	1.000
A33	38%	0.667
B59	25%	1.000
B14	25%	0.800
B38	25%	0.800
B16	25%	0.636
A74	13%	1.000
B41	13%	1.000
B54	13%	1.000
B51	13%	0.800
B42	13%	0.600

\*\*\* 8 LABORATORIES REPLIED \*\*\*

\*\*\*\*\* NEXT SHIPMENT: NOV 10 2010 \*\*\*\*\*

Method: Antiglobulin

\*\*\*\*\* SERUM NO. 1035 \*\*\*\*\* SERUM NO. 1036 \*\*\*\*\*

	%	%	B	B	B	B	B	A	B	B		%	%	B	B	B	B	B	B	METHOD	
	POS	8'S	8	4	8	7	5	9	7	3	9	4	5	4	8	8	4	9	8	7	
Esteves-Kond	70	100	+	+	+	+	+	+	+	+	+	+	43	100	+	+	+	+	+	B73,CW8	(5)
Hahn,Amy B.	31	???	+	+	+	+	+	+	+	+	+	+	13	???	+	+	+	+	+	A33,B27,B51	(5)
McAlack,Robe	36	100	+	+	+	+	+	+	+	+	+	+	31	0	+	+	+	+	+	A68,B52,B67	(5)
Mpuntscha,Loy	39	90	+	+	+	+	+	+	+	+	+	+	9	0	+	+	+	+	+	B47	(5)

\*\*\*\*\* SERUM NO.1035 \*\*\*\*\* SERUM NO.1036 \*\*\*\*\*

\*\*\* 4 TYPING LABS \*\*\*

B8	100%	1.000
B18	100%	1.000
B64	100%	1.000
A33	75%	1.000
B37	75%	1.000
B39	75%	1.000
B65	75%	1.000
B67	75%	1.000
B38	50%	1.000
B54	50%	1.000
B59	50%	1.000
B42	25%	1.000
B47	25%	1.000
B55	25%	1.000

\*\*\* 4 TYPING LABS \*\*\*

B64	100%	1.000
B65	100%	1.000
B8	75%	1.000
B18	75%	1.000
B37	50%	1.000
B38	50%	1.000
B39	50%	1.000
B54	50%	1.000
A33	25%	1.000
A68	25%	1.000
B27	25%	1.000
B51	25%	1.000
B52	25%	1.000
B67	25%	1.000
B73	25%	1.000
CW8	25%	1.000

\*\*\* 4 LABORATORIES REPLIED \*\*\*

\*\*\*\*\* NEXT SHIPMENT: NOV 10 2010 \*\*\*\*\*

Method: Elisa



INVESTIGATOR		DNA EXTRACT #493 (Caucasian)		B1	B2	C1	C2	method
CTR	NAME	A1	A2					
5488	Adams, Sharon	*010101	*2504	*080101/23/50	*150101/70/*9542	*0102/17	*07	
4691	Ajlan, Abdula	*01	*25	*08	*15	*01	*07	SSO
745	Anthony Nola	*01:01:01:01	*25:04	*08:01/50	*15:01/142	*01:02:01	*07:01	SSO, SSP, SBT
5133	Baker, Judy	*0101	*2504	*0801	*1501	*0102	*0701	SSO, SBT
2020	Barnardo, Mar	*01:01:01:01	*25:04	*08:01:01	*15:01:01:01	*0102/25	*07:01/52	PCR-SSP, SBT
4345	Blasczyk, Rai	*01:01:01G	*25:04	*08:01:01G	*15:01:01G	*01:02:01G	*07:01:01G	PCR-SBT
5106	Brown, Colin	*01	*25:04	*08	*15	*01	*07	
785	Chan, Soh Ha	*0101/04N/22N/32+	*2504	*0801/04/12/19N+	*1501/07/10/14/17+	*0102/11/17/25	*0701/06/18/40+	SBT
3224	Chen, Dongfen	*01:01	*25:04	*08:01	*15:01	*01:02	*07:01/06/18	RVSSOP, SBT
8021	Clark, Brenda	*0101/04N/06+	*250101/05/07+	*0801/06-08N+	*150101-0104/0106+	*0102/03/06-11+	*0701/06/07+	PCR-SSP
5219	Daniel, Dolly	*01	*25	*08	*15			PCR-SSOP, SSP
5323	Dhaliwal, J.	*01	*25	*08	*15	*01	*07	PCR-SSP
5891	Du, Keming	*0101	*2504	*0801/04/35	*1501/07/30/63	*0102	*0701	PCR-SBT
3766	Dunn, Paul	*01	*2504	*08	*15:01G	*01	*07	PCR-SSP, SSO
3428	Eckels/Utah	*0101/01N/04N/22N+	*2504	*0801/19N/23/36	*1501/01N/70/97+	*0102/25/29-31+	*0701	SSOP
2332	Elkhalifa, Mo	NT						
4251	Ellis, Thomas	*01:01	*25:04	*08:01/50	*15:01/01N/142	*01:02	*07:01	PCR-SSO, SEQ
762	Fischer&Mayr	*01:01/04N/22N/32+	*25:04	*08:01/19N	*15:01/102/104+	*01:02/25	*07:01/06/18/52	
3135	Fischer, John	*01:01	*25:04	*08:01	*15:01	*01:02	*07:01/06/18	PCR-SSO, SBT
234	Gomez, Carmen	*01	*25	*08	*15	*01	*07	SSP, SSOP
5195	Gomez, Carmen	*01	*2504	*08	*15	*01	*07	SSOP
810	Hamdi, Nuha	*01010101	*2504	*080101	*15010101	*010201	*070101	SSO
1461	Hidajat, Mela	*0101	*2504	*0801	*1501	*0102	*0701	SSO, SSP, SBT
615	Holdsworth, R	*01	*25	*0801/19N	*1501/01N/*9502+	*0102/25	*0701/06/18/52	SSP, SBT
2344	Hurley&Hartz	*01010101/010102N+	*2504	*080101/19N	*15010101/010102N+	*010201/0202/25	*070101/0102+	SBT, SSOP
748	Jaramillo, An	*01	*25	*08	*15(B62)	*01	*07	RVSSOP
797	Kato, Shunich	*01:01/01N	*25:04	*08:01	*15:01/01N	*01:02	*07:01/06/18	SSO, SBT
2847	Kihara, Masaa	*01	*25	*08	*15	*01	*07	RVSSO
5096	Koh, Eun-mi	*01	*25	*08	*15			PCR-SSO
87	Land, Geoff	*0101	*2504	*0801	*1501	*0102	*0701	
278	Lee, Jar-How	*01:01/01N/36-40+	*25:04	*08:01/23/39/44+	*15:01/70/102/140+	*01:02/25/29/30+	*07:01/77/78+	SSP, RVSSOP
640	Lee, Kyung Wh	*01:01	*25:04	*08:01	*15:01	*01:02/17	*07:01/18/40	PCR-SBT
4651	Leech, Stephe	*01	*25	*08	*15	*01	*07	SSOP
9916	McIntyre, Joh	*01:01:01:01	*25:04	*08:01:01	*15:01:01:01	*01:02/25-33	*07:01/77/78+	SSP, SBT
3186	Moses, Jonath	*01	*25	*08	*1501/01N/04/05+	*01	*07	SSP
8042	Muncher, Lior	*0101	*2504	*0801	*1501	*0102	*0701	SSP, SSOP
8022	Olerup, Olle	*01:01	*25:04	*08:01	*15:01/70	*01:02	*07:01	SSP
8065	Padua, Florec	*01	*25	*08	*15(B62)			SSP
3648	Pereira, Noem	*01:01	*25:04	*08:01//08:03//+	*1501/01N//15:70+	*01:02//01:17	*07:01P//07:40	RSSO, SBT, SSP
3966	Permpikul&Ve	*01	*25	*08	*15:01	*01	*07	PCR-SSP
2400	Phelan, Donna	*0101/01N	*2504	*0801	*1501/01N	*0102	*0701	RSSO, SBT, SSP
3753	Reed, Elaine	*0101	*2504	*0801/04/12/21/23+	*1501/07/30/50/56+	*0102/17	*0701/06/18/40	SBT
3625	Rees, Tracey	*01:01	*25:04	*08:01	*15:01	*01:02/25	*07:01/18	SBT, PCR-SSP
3798	Reinsmoen, N	*01:01:01/01N	*25:04	*08:01:01	*15:01:01/01N	*01:02:01	*07:01/06/18	RVSSO, SBT
1694	Sauer&Gottwa	*01	*25	*08	*15	*01	*07	SSP
3545	Scornik, Juan	*0101	*2504	*0801	*1501	*0102	*0701/06/18	SSOP, SBT
735	Smith, MI	*01	*25	*08	*15(B62)	*01	*07	RVSSOP
746	Stamm, Luz	*01:01	*25:04	*08:01	*15:01	*01:02	*07:01	RSSO, SSP, SBT
13	Tagliere, Jac	*01:01	*25:04	*08:01	*15:01	*01:02	*07:01	SSP
4021	Trachtenberg	*01	*2504	*08	*15	*01	*07	RVSSO
5462	Turner, E.V.	*01:01	*25:04	*08:01	*15:01	*01:02	*07:01	SEQ, SSO, SSP
789	Walter Reed	*01	*25	*08	*15	*01	*07	SSP

INVESTIGATOR		DNA EXTRACT #494 (Black)						
CTR	NAME	A1	A2	B1	B2	C1	C2	method
5488	Adams, Sharon	*020101	*230101/17	*070201/26/61	*140201/03	*07	*08	
4691	Ajlan, Abdula	*02	*23	*07	*14	*07	*05/*08	SSO
745	Anthony Nola	*02:01:01	*23:01:01	*07:02:01	*14:02:01	*07	*08	SSO, SSP, SBT
5133	Baker, Judy	*0201	*2301/17	*0702/61	*1402	*0701	*0802	SSO, SBT
2020	Barnardo, Mar	*02:01:01:01+	*23:01:01/17	*07:02:01/61	*14:02:01	*07:06/18	*08:02:01var	PCR-SSP, SBT
4345	Blasczyk, Rai	*02:01:01G	*23:01:01G	*07:02:01G	*14:02	*07:01:01G	*08:02	PCR-SBT
5106	Brown, Colin	*02:01	*23:01/17	*07:02/26	*14:02/03	*07	*08:02/05	
785	Chan, Soh Ha	*02	*2301/04/07N+	*0702/26/35/42/44+	*1402/03	*0701/06/16/18+	*0802/05/28	SBT
3224	Chen, Dongfen	*02:01	*23:01/17	*07:02/61	*14:02	*07:01/06/18	*08new	RVSSOP, SBT
8021	Clark, Brenda	*020101-0104/0106+	*2301/04-08N+	*0702/04/10+	*1402-04/09	*0701/06/07+	*0802/04/05+	PCR-SSP
5219	Daniel, Dolly	*02	*23	*07	*14			PCR-SSOP, SSP
5323	Dhaliwal, J.	*02	*23	*07	*14	*07	*08	PCR-SSP
5891	Du, Keming	*0201	*2301/17	*0702/26/0601	*1402/03	*07	*08	PCR-SBT
3766	Dunn, Paul	*02	*23	*07	*14:02/03/09/15/16	*07	*08	PCR-SSP, SSO
3428	Eckels/Utah	*02	*2301/07N/17-20	*07	*1402/03/09	*07	*0532/*0802	SSOP
2332	Elkhalifa, Mo	NT						
4251	Ellis, Thomas	*02:01	*23:01	*07:02	*14:02	*07	*08	PCR-SSO, SEQ
762	Fischer&Mayr	*02:01/09/43N/66+	*23:01/07N/17+	*07:02/44/49N/58+	*14:02	*07:01/06/18/52	*08	
3135	Fischer, John	*02:01/01L	*23:01	*07:02	*14:02	*07:01/06/18	*0802	PCR-SSO, SBT
234	Gomez, Carmen	*02	*23	*07	*14	*07	*08	SSP, SSOP
5195	Gomez, Carmen	*02	*23	*07	*14	*07	*08	SSOP
810	Hamdi, Nuha	*02010101	*230101	*070201	*140201	*0728	*0520	SSO
1461	Hidajat, Mela	*0201	*2301	*0702	*1402	*0718	*0802	SSO, SSP, SBT
615	Holdsworth, R	*02	*23	*07	*14			SSP, SBT
2344	Hurley&Hartz	*02010101/010102L+	*230101/07N/17+	*070201/0206/0209+	*140201	*070101/0102+	*080201new	SBT, SSOP
748	Jaramillo, An	*02	*23	*07	*14(B65)	*07	*08	RVSSOP
797	Kato, Shunich	*02:01/01L	*23:01/17	*07:02/61	*14:02	*07:01/06/18+	*05:32/*08:02	SSO, SBT
2847	Kihara, Masaa	*02	*23	*07	*14	*07	*08	RVSSO
5096	Koh, Eun-mi	*02	*23	*07	*14			PCR-SSO
87	Land, Geoff	*0201	*2301	*0702	*1402	*0718	*0802	
278	Lee, Jar-How	*02:01/43N/97/121+	*23:01/17-20/23	*07:02/61	*14:02	*07:01/77/78/83+	*08:02	SSP, RVSSOP
640	Lee, Kyung Wh	*02:01/36/90	*23:01/04/12/17	*07:02/26/61	*14:02/03	*07:01/06/18/40v	*08:02/05/28v	PCR-SBT
4651	Leech, Stephe	*02	*23	*07	*14	*07	*08	SSOP
9916	McIntyre, Joh	*02:01:01	*23:01:01/17	*07:02:01	*14:02:01	*07:18	*08:02/28/30	SSP, SBT
3186	Moses, Jonath	*02	*23	*07	*1402/03/09	*07	*08	SSP
8042	Muncher, Lior	*0201	*2301	*0702	*1402	*0701	*0802	SSP, SSOP
8022	Olerup, Olle	*02:01	*23:01	*07:02	*14:02	*07:18	*08:02	SSP
8065	Padua, Florec	*02	*23	*07	*14(B65)			SSP
3648	Pereira, Noem	*02:01P/01L	*23:01P	*07:02P	*14:02			RSSO, SBT, SSP
3966	Permpikul&Ve	*02	*23	*07	*14	*07	*08	PCR-SSP
2400	Phelan, Donna	*0201	*2301	*0702/61	*1402	*0718var	*0802	RSSO, SBT, SSP
3753	Reed, Elaine	*0201/36/90	*2301/04/12/17	*0702/26/61	*1402/03	*0701+/var	*0802+/var	SBT
3625	Rees, Tracey	*02:01	*23:01/17	*07:02/61	*14:02	*07:01/18	*08	SBT, PCR-SSP
3798	Reinsmoen, N	*02:01:01/01L	*23:01:01/17	*07:02:01/61	*14:02:01	*07:01/06/18	*08:02:01var	RVSSO, SBT
1694	Sauer&Gottwa	*02	*23	*07	*14	*07	*08	SSP
3545	Scornik, Juan	*0201	*2301/17	*0702/26/61	*1402/03	*0701/06/18	*0802	SSOP, SBT
735	Smith, MI	*02	*23	*07	*14	*07	*05/*08	RVSSOP
746	Stamm, Luz	*02:01	*23:01	*07:02	*14:02	*07:18	*08:02	RSSO, SSP, SBT
13	Tagliere, Jac	*02:01	*23:01	*07:02	*14:02	*07:18	*08:02	SSP
4021	Trachtenberg	*02	*23	*07	*14	*07	*08	RVSSO
5462	Turner, E.V.	*02:01	*23:01	*07:02	*14:02	*07:18	*08:02	SEQ, SSO, SSP
789	Walter Reed	*02	*23	*07	*14	*07	*08	SSP

INVESTIGATOR		DNA EXTRACT #495 (Australian Aborigine)							
CTR	NAME	A1	A2	B1	B2	C1	C2	method	
5488	Adams, Sharon	*020101	*340101	*400201	*5602	*0102/14/22	*1502/07/08		
4691	Ajlan, Abdula	*02	*34	*40	*56	*01	*15	SSO	
745	Anthony Nola	*02:01:01	*34:01:01	*40:02:01	*56:02	*01:02	*15:02	SSO, SSP, SBT	
5133	Baker, Judy	*0201	*3401	*4002	*5602	*0102	*1502	SSO, SBT	
2020	Barnardo, Mar	*02:01:01:01+	*34:01:01	*40:02:01	*56:02	*01:02/25	*15:02/13	PCR-SSP, SBT	
4345	Blasczyk, Rai	*02:01:01G	*34:01	*40:02:01G	*56:02	*01:02:01G	*15:02:01G	PCR-SBT	
5106	Brown, Colin	*02	*34:01/05	*40:01/35/56-58+	*56:02/04	*01	*15:02/03/07+		
785	Chan, Soh Ha	*02	*3401	*4002/56/97	*5602	*0102/10/11/14+	*1502/07/08/13+	SBT	
3224	Chen, Dongfen	*02:01	*34:01	*40:02	*56:02	*01:02	*15:02	RVSSOP, SBT	
8021	Clark, Brenda	*020101-0104/0106+	*3401/05	*4002/04/06+	*5602/04	*0102/03/06-11+	*1502-06+	PCR-SSP	
5219	Daniel, Dolly	*02	*34	*40	*56			PCR-SSOP, SSP	
5323	Dhaliwal, J.	*02	*34	*40	*56	*01	*15	PCR-SSP	
5891	Du, Keming	*0201	*3401	*4002	*5602	*0102	*1502/07	PCR-SBT	
3766	Dunn, Paul	*02	*34	*40:02G	*56	*01	*15	PCR-SSP, SSO	
3428	Eckels/Utah	*02	*3401	*4002/56/58/82/90+	*5602/04	*0102/25/29-31+	*1502/13	SSOP	
2332	Elkhalifa, Mo	NT							
4251	Ellis, Thomas	*02:01	*34:01	*40:02	*56:02	*01:02	*15:02	PCR-SSO, SEQ	
762	Fischer&Mayr	*0201/09/43N/66+	*34:01	*40:02/56/97	*56:02	*01:02/25	*15:02/13		
3135	Fischer, John	*02:01/01L	*34:01	*40:02	*56:02	*01:02	*15:02	PCR-SSO, SBT	
234	Gomez, Carmen	*02	*34	*40	*56	*01	*15	SSP, SSOP	
5195	Gomez, Carmen	*02	*34	*40	*56	*01	*15	SSOP	
810	Hamdi, Nuha	*02010101	*340101	*400201	*5602	*010201	*150201	SSO	
1461	Hidajat, Mela	*0201	*3401	*4002	*5602	*0102	*1502	SSO, SSP, SBT	
615	Holdsworth, R	*02	*34	*4002/56/97	*5602	*0102/25	*15	SSP, SBT	
2344	Hurley&Hartz	*02010101/020102L+	*340101	*400201/56/97	*5602	*010201/0202/25	*150201/13	SBT, SSOP	
748	Jaramillo, An	*02	*34	*40(B61)	*56	*01	*15	RVSSOP	
797	Kato, Shunich	*02:01/01L	*34:01	*40:02	*56:02	*01:02/22	*15:02/08	SSO, SBT	
2847	Kihara, Masaa	*02	*34	*40	*56	*01	*15	RVSSO	
5096	Koh, Eun-mi	*02	*34	*40	*56			PCR-SSO	
87	Land, Geoff	*0201	*3401	*4002	*5602	*0102	*1502		
278	Lee, Jar-How	*02:01	*34:01	*40:02	*56:02	*01:02	*15:02	SSP, RVSSOP	
640	Lee, Kyung Wh	*02:01	*34:01	*40:02	*56:02	*01:02/14/22	*15:02/07/08	PCR-SBT	
4651	Leech, Stephe	*02	*34	*40	*56	*01	*15	SSOP	
9916	McIntyre, Joh	*02:01:01	*34:01:01	*40:02:01	*56:02	*01:02/25-33	*15	SSP, SBT	
3186	Moses, Jonath	*02	*34	*4002/04/06/11/14+	*56	*01	*15	SSP	
8042	Muncher, Lior	*0201	*3401	*4002	*5602	*0102	*1502	SSP, SSOP	
8022	Olerup, Olle	*02:01	*34:01	*40:02	*56:02	*01:02	*15:02	SSP	
8065	Padua, Florec	*02	*34	*40(B61)	*56			SSP	
3648	Pereira, Noem	*02:01P/01L	*34:01	*40:02	*56:02			RSSO, SBT, SSP	
3966	Permpikul&Ve	*02	*34	*40	*56	*01	*15	PCR-SSP	
2400	Phelan, Donna	*0201	*3401	*4002	*5602	*0102	*1502	RSSO, SBT, SSP	
3753	Reed, Elaine	*0201	*3401	*4002	*5602	*0102/14/22	*1502/07/08	SBT	
3625	Rees, Tracey	*02	*34:01	*40:02	*56:02	*01:02/25	*15:02/13	SBT, PCR-SSP	
3798	Reinsmoen, N	*02:01:01/01L	*34:01:01	*40:02:01	*56:02	*01:02:01	*15:02:01	RVSSO, SBT	
1694	Sauer&Gottwa	*02	*34	*40	*56	*01	*15	SSP	
3545	Scornik, Juan	*0201	*3401	*4002	*5602	*0102	*1502	SSOP, SBT	
735	Smith/MI	*02	*34	*40(B61)	*56	*01	*15	RVSSOP	
746	Stamm, Luz	*02:01	*34:01	*40:02	*56:02	*01:02	*15:02	RSSO, SSP, SBT	
13	Tagliere, Jac	*02:01	*34:01	*40:02	*56:02	*01:02	*15:02	SSP	
4021	Trachtenberg	*02	*3401/05	*40	*5602/04	*01	*15	RVSSO	
5462	Turner, E.V.	*02:01	*34:01	*40:02	*56:02	*01:02	*15:02	SEQ, SSO, SSP	
789	Walter Reed	*02	*34	*40	*56	*01	*15	SSP	

INVESTIGATOR		DNA EXTRACT #496 (Caucasian/Japanese)						method
CTR	NAME	A1	A2	B1	B2	C1	C2	
5488	Adams, Sharon	*020101	*020601	*150101	*151101	*0102/22	*0303/20N/49	
4691	Ajlan, Abdula	*02	*02	*15	*15	*01	*03	SSO
745	Anthony Nola	*02:01:01	*02:06:01	*15:01:01:01	*15:11:01	*01:02	*03:03	SSO, SSP, SBT
5133	Baker, Judy	*0201	*0206	*1501	*1511	*0102	*0303	SSO, SBT
2020	Barnardo, Mar	*02:01:01:01+	*02:06:01	*15:01:01:01	*15:11:01	*01:02/25	*03:03:01	PCR-SSP, SBT
4345	Blasczyk, Rai	*02:01:01G	*02:06:01G	*15	*15	*01:02:01G	*03:03:01G	PCR-SBT
5106	Brown, Colin	*02		*15:01	*15:11	*01	*03:03/11/12+	
785	Chan, Soh Ha	*02		*1501/10/14/17	*1511/15	*0102/10/11/22+	*0303/20N/49+	SBT
3224	Chen, Dongfen	*02:01	*02:06	*15:01	*15:11	*01:02	*03:03	RVSSOP, SBT
8021	Clark, Brenda	*0201-03+		*150101-0104/0106-0108/04-08+		*0102/03/06-11+	*0303/11-13+	PCR-SSP
5219	Daniel, Dolly	*02	*02	*15	*15			PCR-SSOP
5323	Dhaliwal, J.	*02		*15	*15	*01	*03	PCR-SSP
5891	Du, Keming	*0201	*0206	*1501	*1511	*0102	*0303/20N	PCR-SBT
3766	Dunn, Paul	*02:01G	*02:06G	*15:01G	*15:11/148	*01	*03	PCR-SSP, SSO
3428	Eckels/Utah	*02	*0206/*9226/44+	*15	*1511	*0102/25/29-31+	*0303/53/56/62+	SSOP
2332	Elkhalifa, Mo	NT						
4251	Ellis, Thomas	*02:01	*02:06	*15:01	*15:11	*01:02	*03:03/20N	PCR-SSO, SEQ
762	Fischer&Mayr	*02:01/09/43N/66+	*02:06/126	*15:01/102/104+	*15:11	*01:02/25	*03:03/62	
3135	Fischer, John	*02:01/01L	*02:06	*15:01	*15:11	*01:02	*03:03	PCR-SSO, SBT
234	Gomez, Carmen	*02		*15		*01	*03	SSP, SSOP
5195	Gomez, Carmen	*02	*02	*15	*15	*01	*03	SSOP
810	Hamdi, Nuha	*02010101	*020601	*15010101	*151101	*010201	*030301	SSO
1461	Hidajat, Mela	*0201	*0206	*1501	*1511	*0102	*0303	SSO, SSP, SBT
615	Holdsworth, R	*0201/09/43N/66+	*0206/*9226	*15	*15			SSP, SBT
2344	Hurley&Hartz	*02010101/010102L+	*020601/*9226	*15010101/010102N+	*151101	*010201/0202/25	*030301/20N/62	SBT, SSOP
748	Jaramillo, An	*02		*15(B62)	*15(B75)	*01	*03(Cw9)	RVSSOP
797	Kato, Shunich	*02:01/01L	*02:06	*15:01	*15:11	*01:02	*03:03	SSO, SBT
2847	Kihara, Masaa	*02	*02	*15	*15	*01	*03	RVSSO
5096	Koh, Eun-mi	*02	*02	*15	*15			PCR-SSO
87	Land, Geoff	*0201	*0206	*1501	*1511	*0102	*0303	
278	Lee, Jar-How	*02:01	*02:06	*15:01	*15:11	*01:02	*03:03	SSP, RVSSOP
640	Lee, Kyung Wh	*02:01	*02:06	*15:01/15	*15:11/152	*01:02/22	*03:03/20N/49	PCR-SBT
4651	Leech, Stephe	*02		*15	*15	*01	*03	SSOP
9916	McIntyre, Joh	*02:01:01	*02:06:01	*15:01:01//15:15	*15:11:01//15:152	*01:02/25-33	*03:03/79/83	SSP, SBT
3186	Moses, Jonath	*02		*1501/01N/04/05+	*1508/11/15/*9548+	*01	*0303/11-13/18+	SSP
8042	Muncher, Lior	*0201	*0206	*1501	*1511	*0102	*0303	SSP, SSOP
8022	Olerup, Olle	*02:01	*02:06	*15:01	*15:11	*01:02	*03:03	SSP
8065	Padua, Florec	*02	*32:15	*15(B62)	*15:144			SSP
3648	Pereira, Noem	*02:01P/01L	*02:06	*15:01/01N	*15:11	*01:02P//01:22	*03:03P/20N//+	RSSO, SBT, SSP
3966	Permpikul&Ve	*02	*02	*15:01	*15:11	*01	*03	PCR-SSP
2400	Phelan, Donna	*0201	*0206	*1501/01N/15	*1511/*9552	*0102	*0302/30N	RSSO, SBT, SSP
3753	Reed, Elaine	*0201	*0206	*1501/15	*1511/*9552	*0102/22	*0303/20N/49	SBT
3625	Rees, Tracey	*02:01	*02:06	*15:01	*15:11	*01:02/25	*03:03/20N	SBT, PCR-SSP
3798	Reinsmoen, N	*02:01:01/01L	*02:06:01	*15:01:01/01N	*15:11:01	*01:02:01	*03:03:01/20N	RVSSO, SBT
1694	Sauer&Gottwa	*02		*15		*01	*03	SSP
3545	Scornik, Juan	*0201	*0206	*1501	*1511	*0102	*0303/20N	SSOP, SBT
735	Smith, MI	*02	*02	*15(B62)	*15(B75)	*01	*03(Cw9)	RVSSOP
746	Stamm, Luz	*02:01	*02:06	*15:01	*15:11	*01:02	*03:03	RSSO, SSP, SBT
13	Tagliere, Jac	*02:01	*02:06	*15:01	*15:11	*01:02	*03:03	SSP
4021	Trachtenberg	*02	*02	*15	*15	*01	*03	RVSSO
5462	Turner, E.V.	*02:01	*02:06	*15:01	*15:11	*01:02	*03:03	SEQ, SSO, SSP
789	Walter Reed	*02		*15(B62)	*15(B75)	*01	*03	SSP

## SUMMARY

Extract 493 (Caucasian)  
51 labs  
 A\*01 57%  
 A\*0101 14%  
 A\*01:01 19%  
 A\*010101 2%  
 A\*01010101 2%  
 A\*01:01:01:01 6%  
 A\*01 100% TOTAL

A\*25 31%  
 A\*2504 31%  
 A\*25:04 38%  
 A\*25 100% TOTAL

51 labs  
 B\*08 63%  
 B\*0801 12%  
 B\*08:01 17%  
 B\*080101 2%  
 B\*08:01:01 6%  
 B\*08 100% TOTAL  
 B\*15 69%  
 B\*1501 10%  
 B\*15:01 15%  
 B\*15010101 2%  
 B\*15:01:01:01 4%  
 B\*15 100% TOTAL

48 labs  
 Cw\*01 52%  
 Cw\*0102/25 6%  
 C\*01:02/25 4%  
 Cw\*0102 15%  
 C\*01:02 17%  
 Cw\*010201 2%  
 C\*01:02:01 4%  
 Cw\*01 100% TOTAL  
 Cw\*07 58%  
 Cw\*0701/06/18 2%  
 C\*07:01/06/18 8%  
 C\*07:01/18 2%  
 Cw\*0701 15%  
 C\*07:01 13%  
 Cw\*070101 2%  
 Cw\*07 100% TOTAL

Extract 494 (Black)  
51 labs  
 A\*02 63%  
 A\*0201 14%  
 A\*02:01 15%  
 A\*020101 2%  
 A\*02:01:01 4%  
 A\*02010101 2%  
 A\*02 100% TOTAL

A\*23 55%  
 A\*2301/17 6%  
 A\*23:01/17 8%  
 A\*230101/17 2%  
 A\*23:01:01/17 6%  
 A\*2301 8%  
 A\*23:01 11%  
 A\*230101 2%  
 A\*23:01:01 2%  
 A\*23 100% TOTAL

51 labs  
 B\*07 61%  
 B\*0702/61 4%  
 B\*07:02/61 8%  
 B\*07:02:01/61 4%  
 B\*0702 6%  
 B\*07:02 11%  
 B\*070201 2%  
 B\*07:02:01 4%  
 B\*07 100% TOTAL  
 B\*14 39%  
 B\*1402/03 8%  
 B\*14:02/03 6%  
 B\*1402 10%  
 B\*14:02 25%  
 B\*140201 4%  
 B\*14:02:01 8%  
 B\*14 100% TOTAL

47 labs  
 Cw\*07 64%  
 Cw\*0701/06/18 2%  
 C\*07:01/06/18 7%  
 C\*07:01/18 2%  
 C\*07:06/18 2%  
 Cw\*0701 4%  
 Cw\*0718 4%  
 C\*07:18 11%  
 Cw\*0718var 2%  
 Cw\*0728 2%  
 Cw\*07 100% TOTAL  
 Cw\*08 52%  
 Cw\*08new 2%  
 Cw\*0802 15%  
 C\*08:02 13%  
 Cw\*080201new 2%  
 C\*08:02:01var 5%  
 Cw\*08 89% TOTAL

Extract 495 (Aust Aborigine)  
51 labs  
 A\*02 60%  
 A\*0201 16%  
 A\*02:01 16%  
 A\*020101 2%  
 A\*02:01:01 4%  
 A\*02010101 2%  
 A\*02 100% TOTAL

A\*34 39%  
 A\*3401 20%  
 A\*34:01 27%  
 A\*340101 6%  
 A\*34:01:01 8%  
 A\*34 100% TOTAL

51 labs  
 B\*40 41%  
 B\*4002/56/97 4%  
 B\*40:02/56/97 2%  
 B\*400201/56/97 2%  
 B\*4002 16%  
 B\*40:02 23%  
 B\*400201 4%  
 B\*40:02:01 8%  
 B\*40 100% TOTAL  
 B\*56 31%  
 B\*5602/04 6%  
 B\*56:02/04 2%  
 B\*5602 26%  
 B\*56:02 35%  
 B\*56 100% TOTAL

47 labs  
 Cw\*01 51%  
 Cw\*0102/25 4%  
 C\*01:02/25 7%  
 Cw\*0102 15%  
 C\*01:02 19%  
 Cw\*010201 2%  
 C\*01:02:01 2%  
 Cw\*01 100% TOTAL  
 Cw\*15 53%  
 Cw\*1502/13 2%  
 C\*15:02/13 7%  
 Cw\*150201/13 2%  
 Cw\*1502 13%  
 C\*15:02 19%  
 Cw\*150201 2%  
 C\*15:02:01 2%  
 Cw\*15 100% TOTAL

Extract 496 (Cauc/Japanese)  
51 labs  
 A\*02 59%  
 A\*0201 16%  
 A\*02:01 17%  
 A\*020101 2%  
 A\*02:01:01 4%  
 A\*02010101 2%  
 A\*02 100% TOTAL

A\*02 47%  
 A\*0206 16%  
 A\*02:06 23%  
 A\*020601 4%  
 A\*02:06:01 8%  
 A\*02 98% TOTAL

51 labs  
 B\*15 57%  
 B\*1501 12%  
 B\*15:01 23%  
 B\*150101 2%  
 B\*15010101 2%  
 B\*15:01:01:01 4%  
 B\*15 100% TOTAL  
 B\*15 47%  
 B\*1511 14%  
 B\*15:11 27%  
 B\*151101 6%  
 B\*15:11:01 6%  
 B\*15 100% TOTAL

47 labs  
 Cw\*01 51%  
 Cw\*0102/25 2%  
 C\*01:02/25 7%  
 Cw\*0102 15%  
 C\*01:02 21%  
 Cw\*010201 2%  
 C\*01:02:01 2%  
 Cw\*01 100% TOTAL  
 Cw\*03 58%  
 Cw\*0303/20N 4%  
 C\*03:03/20N 4%  
 C\*03:03:01/20N 2%  
 Cw\*0303 9%  
 C\*03:03 19%  
 Cw\*030301 2%  
 C\*03:03:01 2%  
 Cw\*03 100% TOTAL

INVESTIGATOR		CELL NO.1405 (Chinese)		B1	B2	C1	C2	method
CTR	NAME	A1	A2					
745	Anthony Nola	*02:01:01	*02:07	*51:01	*40:01	*07:02:01	*15:02:01	SSO,SSP,SBT
5106	Brown,Colin	*02:01	*02:07	*51:01	*40:01	*07	*15:02/03/10+	PCR-RSSOP,SBT
774	Cecka,J.Mich	*02	*02:07	*51	*40	*07	*15	SSP
5232	Charlton,Ron	*0201	*0207	*5101	*4001	*0702	*1502	SSP,SSO
4492	Charron,D.	*02		*51	*40	*07	*15	PCR-SSO
798	Claas,F.H.J.	*0201	*0207	*510101	*4001	*0702	*150201	SBT
3632	Colombe,Beth	*0201	*0207	*5101	*4001	*0702	*1502	SSP
5130	Costeas,Paul	*02:01	*02:07	*51:01	*40:01	*07:02	*15:02	SSO,SSP
779	Daniel,Claud	*02		*51	*40(B60)	*07	*15	PCR-SSP
8052	Del Pozo,Ana	*02	*02	*51	*40	*07	*15	PCR-SSO
3766	Dunn,Paul	*02		*51	*40	*07	*15	SSO
5214	Eckels/CPMC	*02	*02	*51	*40(B60)	*07	*15	SSOP
4251	Ellis,Thomas	*02:01	*02:07	*51:01	*40:01	*07:02/50	*15:02	PCR-SSO,SEQ
762	Fischer&Mayr	*02:01/09/43N/66+	*02:07/15N	*51:01/11N/30+	*40:01/55	*07:02/50/66/74	*15:02/13	
792	Gandhi,Manis	*0201	*0207	*5101	*4001	*0702	*1502	SSO,SSP
810	Hamdi,Nuha	*02010101	*02010101	*510101	*400101	*07020101	*150201	
4269	Hanau,Daniel	*02		*51	*40	*07	*15	PCR-SSP
3808	Hogan,Patric	*02		*51	*4001G	*0702G	*15	SSP
771	Israel,Shosh	*0201	*0207	*5101	*4001	*0702	*1502	
9003	Israel_LR	*02		*51	*40	*07	*15	
859	Kamoun,Malek	*0201	*0207	*5101	*4001	*0702	*1502	
4337	Kim,Tai-Gyu	*02:01/09/43N/66+	*02:07/15N	*51:01/11N/30+	*40:01/55	*07:02/50/66/74	*15:02/13	SBT
168	Klein,Tirza	*02:01	*02:07	*51:01	*40:01	*07:02	*15:02	PCR-SSP,SSO
278	Lee,Jar-How	*02:01/97/121/132+	*02:07	*51:01/48/51/69+	*40:01/55	*07:02/75/80/84+	*15:02	SSP,RVSSOP
6649	Lim,Young Ae	*02		*51	*40(B60)	*07	*15	PCR-SSP
731	Loewenthal,R	*02:01:01	*02:07	*51:01:01	*40:01	*07:02:01	*15:02:01	
759	Lopez-Cepero	*0201/04/07/09/15N+		*5101/03/11N/14+	*4001/22N/38+	*0702/10/19/32N+	*1502/03/10/13+	RVSSO
23	Mah,Helen	*02	*02	*51	*40	*07	*15	SSO
8029	Mani,Rama	*02		*51	*40			PCR-SSP
206	McAlack-Bala	*02	*02	*51	*40(B60)	*07	*15	RVSSOP
4336	Park,Myoung	*02		*51	*40	*07	*15	RVSSO
16	Pidwell/Aska	*020101	*0207	*510101	*4001	*070201/50	*150201	RSSOP,SBT,SSP
3625	Rees,Tracey	*02:01	*02:07	*51	*40(B60)	*07:02	*15:02/13	SBT,PCR-SSP
5200	Reinke,Denni	*02		*51	*40(B60)	*07	*15	SSP
1160	Rosen-Bronso	*02		*51	*40	*07	*15	RVSSO,SSP
793	Rubocki,Ron	*02		*51	*40(B60)	*07	*15	SSP
3519	Semana,Gilbe	*0201	*0207	*5101	*4001	*0702	*1502	SBT,PCR-SSP
8001	Sheikh,Maqso	*02		*51	*40:01/22N	*07	*15	RVSSOP,SSP
769	Tavoularis,S	*02:01	*02:07	*51:01	*40:01	*07:02	*15:02:01	SSO,SBT,SSP
5451	Tilanus,Marc	*02:01:01	*02:07	*51:01:01	*40:01	*07:02:01	*15:02:01	SBT
5462	Turner,E.V.	*02:01	*02:07	*51:01	*40:01	*07:02	*15:02	SEQ,SSO,SSP

INVESTIGATOR	CELL NO.1406 (Hispanic)							method
CTR	NAME	A1	A2	B1	B2	C1	C2	
745	Anthony Nola	*02:06	*03:01	*50:01:01	*39:05:01	*07:02:01	*17:01:01	SSO,SSP,SBT
5106	Brown,Colin	*02:06/99/137	*03:01/07/17	*50:01	*39:05	*07	*17:01-04	PCR-RSSOP,SBT
774	Cecka,J.Mich	*02:06/126/127+	*03	*50	*39	*07	*17	SSP
5232	Charlton,Ron	*0206	*0301	*5001	*3905	*0702	*1701	SSP,SSO
4492	Charron,D.	*02	*03	*50	*39	*07	*17	PCR-SSO
798	Claas,F.H.J.	*020601	*0301	*500101	*390501	*0702	*170101	SBT
3632	Colombe,Beth	*0206	*0301	*5001	*3905	*0702	*1701	SSP
5130	Costeas,Paul	*02:06	*03:01	*50:01	*39:05	*07:02	*17:01	SSO,SSP
779	Daniel,Claud	*02	*03	*50	*39	*07	*17	PCR-SSP
8052	Del Pozo,Ana	*02	*03	*5001	*39	*07	*17	PCR-SSO
3766	Dunn,Paul	*02:06G	*03	*50	*39	*07	*17	SSO
5214	Eckels/CPMC	*02	*03	*50	*39	*07	*17	SSOP
4251	Ellis,Thomas	*02:06/169	*03:01/23	*50:01	*39:05	*07:02/50	*17:01-03	PCR-SSO,SEQ
762	Fischer&Mayr	*02:06/126	*03:01/20/21N/26+	*50:01	*39:05	*0702/50/66/74	*17:01	
792	Gandhi,Manis	*0206	*0301	*5001	*3905	*0702	*1701	SSO,SSP
810	Hamdi,Nuha	*020601	*03010101	*500101	*3924	*07020101	*17010101	
4269	Hanau,Daniel	*020601	*030101	*5001	*3905	*070201	*1701/02	PCR-SBT
3808	Hogan,Patric	*02	*03	*5001/04/05/07+	*39	*0702G	*17	SSP
771	Israel,Shosh	*0206	*0301	*5001	*3905	*0702	*1701	
9003	Israel_LR	*02	*03	*50	*39	*07	*17	
859	Kamoun,Malek	*0206	*0301	*5001	*39	*0702	*1701	
4337	Kim,Tai-Gyu	*02:06/126	*03:01/20/21N/26+	*50:01	*39:05	*07:02/05/66/74	*17:01-03	SBT
168	Klein,Tirza	*02:06	*03:01	*50:01	*39:05	*07:02	*17:01	PCR-SSP,SSO
278	Lee,Jar-How	*02:06	*03:01	*50:01	*39:05	*07:02	*17:01	SSP,RVSSOP
6649	Lim,Young Ae	*02	*03	*50	*39	*07	*17	PCR-SSP
731	Loewenthal,R	*02:06:01	*03:01:01	*50:01:01	*39:05:01	*07:02:01	*17:01	
759	Lopez-Cepero	*0206/10/21/28/61+	*0301/04/07/11N+	*5001	*3901/05/25N/27+	*0702/23/38/46+	*1701-04	RVSSO
23	Mah,Helen	*02	*03	*5001	*39	*07	*17	SSO
8029	Mani,Rama	*02	*03	*50	*39			PCR-SSP
206	McAlack-Bala	*02	*03	*50	*39		*17	RVSSOP
4336	Park,Myoung	*02	*03	*5001/04	*39	*07	*17	RVSSO
16	Pidwell/Aska	*020601	*030101	*500101	*390501	*070201/50	*170101	RSSOP,SBT,SSP
3625	Rees,Tracey	*02:06	*03:01	*50:01	*39:05	*07:02	*17	SBT,PCR-SSP
5200	Reinke,Denni	*02	*03	*50	*39	*07	*17	SSP
1160	Rosen-Bronso	*02	*03	*50	*39	*07	*17	RVSSO,SSP
793	Rubocki,Ron	*02	*03	*50	*39	*07	*17	SSP
3519	Semana,Gilbe	*0206	*0301	*5001	*3905	*0702	*1701	SBT,PCR-SSP
8001	Sheikh,Maqso	*02	*03	*50	*39	*07	*17	RVSSOP,SSP
769	Tavoularis,S	*02:06	*03:01	*50:01:01	*39:05:01	*07:02/50	*17:01	SSO,SBT,SSP
5451	Tilanus,Marc	*02:06:01	*03:01:01	*50:01:01	*39:05:01	*07:02:01	*17:01:01	SBT
5462	Turner,E.V.	*02:06	*03:01	*50:01	*39:05	*07:02	*17:01	SEQ,SSO,SSP

INVESTIGATOR	CELL NO.1407 (Chinese)						method
CTR NAME	A1	A2	B1	B2	C1	C2	
745 Anthony Nola	*11:01	*24:02	*40:01	*40:02:01	*04:03	*07:02:01	SSO,SSP,SBT
5106 Brown,Colin	*11:01	*24:02	*40:01	*40:02	*04:03	*07:02	PCR-RSSOP,SBT
774 Cecka,J.Mich	*11	*2402/69-74/76+	*40	*40	*04:03/06	*07	SSP
5232 Charlton,Ron	*1101	*2402	*4001	*4002	*0403	*0702	SSP,SSO
4492 Charron,D.	*11	*24	*40	*40	*04	*07	PCR-SSO
798 Claas,F.H.J.	*110101	*24020101	*4001	*400201	*0406	*0737	SBT
3632 Colombe,Beth	*1101	*2402	*4001	*4002	*0403	*0702	SSP
5130 Costeas,Paul	*11:01	*24:02	*40:01	*40:02	*04:03	*07:02	SSO,SSP
779 Daniel,Claud	*11	*24	*40(B60)	*40(B61)	*04	*07	PCR-SSP
8052 Del Pozo,Ana	*11	*24	*40	*40	*0403	*07	PCR-SSO
3766 Dunn,Paul	*11	*24	*4001G	*4002G	*04:03	*07	SSO
5214 Eckels/CPMC	*11	*24	*40(B60)	*40(B61)	*0403	*07	SSOP
4251 Ellis,Thomas	*11:01	*24:02	*40:01	*40:02	*04:03	*07:02/50	PCR-SSO,SEQ
762 Fischer&Mayr	*1101/21N	*24:02/09N/11N+	*40:01/55	*40:02/56/97	*04:03	*0702/50/66/74	
792 Gandhi,Manis	*1101	*2402	*4001	*4002	*0403	*0702	SSO,SSP
810 Hamdi,Nuha	*110101	*24020101	*400101	*400201	*0403	*0705	
4269 Hanau,Daniel	*1101	*2402	*4001	*4002	*0403	*0702	PCR-SBT
3808 Hogan,Patric	*11	*24	*4001G	*4002G	*04	*0702G	SSP
771 Israel,Shosh	*1101	*2402	*4001	*4002	*0403	*0702	
9003 Israel_LR	*11	*24	*40		*04	*07	
859 Kamoun,Malek	*1101	*2402	*4001	*4002	*0403	*0702	
4337 Kim,Tai-Gyu	*1101/21N	*24:02/09N/11N+	*40:01/55	*40:02/56/97	*04:03	*07:02/50/66+	SBT
168 Klein,Tirza	*11:01	*24:02	*40:01	*40:02	*04:03	*07:02	PCR-SSP,SSO
278 Lee,Jar-How	*11:01/21N/30/32+	*24:02/76/78/79+	*40:01/55	*40:02/56/97	*04:03	*07:02/56/75+	SSP,RVSSOP
6649 Lim,Young Ae	*11	*24	*40(B60)	*40(B61)	*04	*07	PCR-SSP
731 Loewenthal,R	*11:01:01	*24:02:01	*40:01/11	*40:02:01/80	*04:03	*07:02:01/50	
759 Lopez-Cepero	*1101-03/05/07+	*2402/05/07/09N+	*4001/11/22N/38+	*4002/29/35/37+	*0403	*0702/32N/38+	RVSSO
23 Mah,Helen	*11	*24	*40	*40	*0403	*07	SSO
8029 Mani,Rama	*11	*24	*40	*40			PCR-SSP
206 McAlack-Bala	*11	*24	*40(B60)	*40(B61)	*0403	*07	RVSSOP
4336 Park,Myoung	*11	*24	*40		*0403/06	*07	RVSSO
16 Pidwell/Aska	*110101	*240201	*4001	*400201	*0403	*070201/50	RSSOP,SBT,SSP
3625 Rees,Tracey	*11:01	*24:02	*40(B60)	*40	*04:03	*07:02	SBT,PCR-SSP
5200 Reinke,Denni	*11	*24	*40(B60)	*40(B61)	*04	*07	SSP
1160 Rosen-Bronso	*11	*24	*40	*40	*04:03	*07	RVSSO,SSP
793 Rubocki,Ron	*11	*24	*40(B60)	*40(B61)	*04	*07	SSP
3519 Semana,Gilbe	*1101	*2402	*4001	*4002	*0403	*0702	SBT,PCR-SSP
8001 Sheikh,Maqso	*11	*24	*40:01/11/22N	*40:02	*04	*07	RVSSOP,SSP
769 Tavoularis,S	*11:01	*24:02	*40:01	*40:02:01	*04:03	*07:02	SSO,SBT,SSP
5451 Tilanus,Marc	*11:01:01	*24:02:01:01	*40:01	*40:02:01	*04:03	*07:02:01	SBT
5462 Turner,E.V.	*11:01	*24:02	*40:01	*40:02	*04:03	*07:02	SEQ,SSO,SSP



INVESTIGATOR	CELL NO.1408 (Caucasian)		B1	B2	C1	C2	method
CTR NAME	A1	A2					
745 Anthony Nola	*29:02:01	*30:02:01	*14:02	*37:02	*02:02/32	*08:02/29	SSO,SSP,SBT
5106 Brown,Colin	*29	*30:02/10/12	*14:02/09	*37:02	*02	*08	PCR-SSOP,SBT
774 Cecka,J.Mich	*29	*30	*1402-04/06/09+	*37	*02	*08	SSP
5232 Charlton,Ron	*2902	*3002	*1402	*3702	*0202	*0802	SSP,SSO
4492 Charron,D.	*29	*30	*14	*37	*02	*08	PCR-SSO
798 Claas,F.H.J.	*290201	*300201	*140201	*3702	*020202	*080201	SBT
3632 Colombe,Beth	*2902	*3002	*1402	*3702	*0202	*0802	SSP
5130 Costeas,Paul	*29:02	*30:02	*14:02	*37:02	*02:02	*08:02	SSO,SSP
779 Daniel,Claud	*29	*30	*14(B65)	*37	*02	*08	PCR-SSP
8052 Del Pozo,Ana	*29	*30	*14	*3702	*02	*08	PCR-SSO
3766 Dunn,Paul	*29	*30	*14	*37:02	*02	*08	SSO
5214 Eckels/CPMC	*29	*30	*14(B65)	*3702	*02	*08	SSOP
4251 Ellis,Thomas	*29:02	*30:02	*14:02	*37:02	*02:02	*08:02	PCR-SSO,SEQ
762 Fischer&Mayr	*29:02	*30:02	*14:02	*37:02	*02:02/29	*08:02	
792 Gandhi,Manis	*2902	*3002	*1402	*3702	*0202	*0802	SSO,SSP
810 Hamdi,Nuha	*29010101	*300201	*140201	*3702	*020206	*0520	
4269 Hanau,Daniel	NT						
3808 Hogan,Patric	*29	*30	*1402/03/09/11+	*3702	*02	*08	SSP
771 Israel,Shosh	*2902	*3002	*1402	*3702	*0202	*0802	
9003 Israel_LR	*29	*30	*14	*37	*02	*08	
859 Kamoun,Malek	*2902	*3002/10	*1402	*3702	*02	*0802	
4337 Kim,Tai-Gyu	*29:02	*30:02/33	*14:02	*37:02	*02:02/29	*08:02	SBT
168 Klein,Tirza	*29:02	*30:02	*14:02	*37:02	*02:02	*08:02	PCR-SSP,SSO
278 Lee,Jar-How	*29:02/21	*30:02/32-34	*14:02/16	*37:02	*02:02/24/25Q/29	*08:02	SSP,RVSSOP
6649 Lim,Young Ae	*29	*30	*14	*37	*02	*08	PCR-SSP
731 Loewenthal,R	*29:02:01	*30:02:01	*14:02:01	*37:02	*02	*08	
759 Lopez-Cepero	*2901/02/04/06+	*3002/10/12	*1402/09	*3702	*0202	*0805/05/17	RVSSO
23 Mah,Helen	*29	*3002/10/12	*1402/09	*3702	*02	*0802/05/17	SSO
8029 Mani,Rama	*29	*30	*14	*37			PCR-SSP
206 McAlack-Bala	*29	*30	*14(B65)	*3702	*02	*08	RVSSOP
4336 Park,Myoung	*29	*3002/10/12	*1402/04	*3702	*02	*08	RVSSO
16 Pidwell/Aska	*290201	*300201	*140201	*3702	*020202//*0232	*080201//*0829	RSSOP,SBT,SSP
3625 Rees,Tracey	*29:02	*30:02	*14:02	*37:02	*02:02	*08:02	SBT,PCR-SSP
5200 Reinke,Denni	*29	*30	*14(B65)	*37	*02	*08	SSP
1160 Rosen-Bronso	*29	*30	*14:02	*37:02	*02	*08	RVSSO,SSP
793 Rubocki,Ron	*29	*30	*14(B65)	*37	*02	*08	SSP
3519 Semana,Gilbe	*2902	*3002	*1402	*3702	*0202	*0802	SBT,PCR-SSP
8001 Sheikh,Maqso	*29	*30	*1402	*37	*02	*08	RVSSOP,SSP
769 Tavoularis,S	*29:02:01	*30:02:01	*14:02:01	*37:02	*02:02:02	*08:02:01	SSO,SBT,SSP
5451 Tilanus,Marc	*29:02:01	*30:02:01	*14:02:01	*37:02	*02:02:02	*08:02:01	SBT
5462 Turner,E.V.	*29:02	*30:02	*14:02	*37:02	*02:02	*08:02	SEQ,SSO,SSP

## SUMMARY

Cell 1405 (Chinese)  
41 labs

A*02	54%
A*0201	17%
A*02:01	17%
A*020101	2%
A*02:01:01	8%
A*02010101	2%
A*02	100% TOTAL

A*02	49%
A*02010101	2%
A*0207	20%
A*02:07	29%
A*02	100% TOTAL

41 labs

B*51	56%
B*5101	15%
B*51:01	17%
B*510101	7%
B*51:01:01	5%
B*51	100% TOTAL

B*40	49%
B*40:01/55	7%
B*4001	20%
B*40:01	22%
B*400101	2%
B*40	100% TOTAL

40 labs

Cw*07	60%
Cw*0702	18%
C*07:02	12%
C*07:02:01	8%
Cw*07020101	2%
Cw*07	100% TOTAL

Cw*15	48%
Cw*1502/13	7%
Cw*1502	15%
C*15:02	13%
Cw*150201	7%
C*15:02:01	10%
Cw*15	100% TOTAL

Cell 1406 (Hispanic)  
41 labs

A*02	54%
A*0206	14%
A*02:06	17%
A*020601	10%
A*02:06:01	5%
A*02	100% TOTAL

A*03	54%
A*0301	17%
A*03:01	17%
A*030101	5%
A*03:01:01	5%
A*03010101	2%
A*03	100% TOTAL

41 labs

B*50	37%
B*5001	24%
B*50:01	22%
B*500101	7%
B*50:01:01	10%
B*50	100% TOTAL

B*39	46%
B*3905	15%
B*39:05	22%
B*390501	5%
B*39:05:01	10%
B*3924	2%
B*39	100% TOTAL

40 labs

Cw*07	50%
C*07:02/50	5%
Cw*070201/50	2%
Cw*0702	18%
C*07:02	13%
Cw*070201	2%
C*07:02:01	8%
Cw*07020101	2%
Cw*07	100% TOTAL

Cw*17	55%
Cw*1701	15%
C*17:01	18%
Cw*170101	5%
C*17:01:01	5%
Cw*17010101	2%
Cw*17	100% TOTAL

Cell 1407 (Chinese)  
41 labs

A*11	51%
A*1101	17%
A*11:01	20%
A*110101	7%
A*11:01:01	5%
A*11	100% TOTAL

A*24	52%
A*2402	17%
A*24:02	20%
A*240201	2%
A*24:02:01	2%
A*24020101	5%
A*24:02:01:01	2%
A*24	100% TOTAL

41 labs

B*40	49%
B*40:01/55	7%
B*4001	22%
B*40:01	20%
B*400101	2%
B*40	100% TOTAL

B*40	54%
B*4002	17%
B*40:02	15%
B*400201	7%
B*40:02:01	7%
B*40	100% TOTAL

40 labs

Cw*04	25%
Cw*0403	35%
C*04:03	38%
Cw*0406	2%
Cw*04	100% TOTAL

Cw*07	50%
C*07:02/50	3%
Cw*070201/50	3%
C*07:02:01/50	2%
Cw*0702	18%
C*07:02	15%
C*07:02:01	5%
Cw*0705	2%
Cw*0737	2%
Cw*07	100% TOTAL

Cell 1408 (Caucasian)  
40 labs

A*29	50%
A*29010101	2%
A*2902	15%
A*29:02	18%
A*290201	5%
A*29:02:01	10%
A*29	100% TOTAL

A*30	42%
A*3002/10/12	8%
A*30:02/10/12	2%
A*3002/10	2%
A*3002	13%
A*30:02	15%
A*300201	8%
A*30:02:01	10%
A*30	100% TOTAL

40 labs

B*14	37%
B*1402/09	5%
B*14:02/09	2%
B*1402	18%
B*14:02	22%
B*140201	8%
B*14:02:01	8%
B*14	100% TOTAL

B*37	22%
B*3702	40%
B*37:02	38%
B*37	100% TOTAL

39 labs

Cw*02	62%
Cw*0202	15%
C*02:02	13%
Cw*020202	3%
C*02:02:02	5%
Cw*020206	2%
Cw*02	100% TOTAL

Cw*08	54%
Cw*0802	15%
C:08:02	21%
Cw*080201	2%
C*08:02:01	5%
Cw*08	97% TOTAL

INTERNATIONAL CELL EXCHANGE

		***** CELL NO.1405 *****				***** CELL NO.1406 *****				***** CELL NO.1407 *****				***** CELL NO.1408 *****														
		(CHIN)				(HISP)				(CHIN)				(CAUC)														
INVESTIGATOR	V	A	B	B	C	B	B	A	A	B	B	C	C	B	A	A	B	B	C	C	B	B						
DAYS	I	B	2	5	6	W	W	B	2	3	5	3	W	X	W	B	2	3	1	3	W	W	W					
NAME	OLD	%	1	0	7	4	6	%	0	9	7	1	6	OTHERS	%	1	4	0	1	0	7	6	OTHERS					
Abbal, Michel	3	90	+	+	+	+		90	+	+	+	+	+		95	+	+	+					90	+	+	+		
Alonso, Anton	6	90	+	+	+	+		90	+	+	+	+	+		90	+	+	+	+	+			90	+	+	+	+	+
Alvarez, Carr	6	100	+	+	+	+	A68	100	+	+	+	+	+		100	+	+	+	+	+	BW4		100	+	+	+	+	+
Anthony Nola	7	98	+	+	+			98	+	+	+	+			98	+	+	+	+				98	+	+	+		
Arnold, Angel	3	99	+	+	+	+		99	+	+	+	+	+		99	+	+	+	+				99	+	+	+	+	B27
Cecka, J. Mich	7	95	+	+	+	+		95	+	+	+	+	+		95	+	+	+	+				95	+	+	+	+	
Chan MD, Soh	4	95	+	+	+	+	A68, CW6	95	+	+	+	+	+		95	+	+	+	+				95	+	+	+	+	B27
Charron, D. P	5	100	+	+	+	+		100	+	+	16	+		B49	100	+	+	+	+				100	+	+	+	+	B47
Claas, F.H.J.	6	???	+	+	+	+		???	+	+	+	+			???	+	+	+	W4	+			???	+	+	+	+	B27
Dunk, Arthur	2	98	+	+	+	+		98	+	+	+	+	+		98	+	+	+	+	+	+		98	+	+	+	+	B47
Dunn, Paul Dr	6	95	+	+	+	+		95	+	+	+	+	+		95	+	+	+	+				95	+	+	+	+	
Esteves Kond	2	98	+	+	+	+		98	+	+	+	+	+	3905	98	01	+	+	+	W4	+		98	+	+	+	+	B37V
Fischer, Joha	7	98	+	+	+	+		98	+	+	+	+	+		98	+	+	+	+				98	+	+	+	+	
Gomez, Carmen	3	98	+	+	+	+	CX15	98	+	+	+	+	+		98	+	+	+	W4	+			98	+	+	+	+	
Gomez, Carmen	3	97	+	+	+	+	CX15	97	+	+	+	+	+		97	+	+	+	W4	+			97	+	+	+	+	
Hahn, Amy B.	2	99	+	+	+	+	CX15	90	+	+	+	+	+		99	+	+	+	W6	+	CW2		99	+	+	+	+	B47
Harville, Ter	2	98	+	+	+	+		98	+	+	+	+	+		98	+	+	+	W4	+		B70	98	+	+	+	+	B37V
Hirankarn MD	6	C						88	+	+	+	+	+	B70	93	01	+	+	+		B70		94	+	+	+	+	
Hogan, Patric	9	85	+	+	+	+		85	+	+	+	+	+		85	+	+	+	+	+			85	+	+	+	+	27X47
Holdsworth, R	8	97	+	+	+	+		98	+	+	+	+	+		96	+	+	+	W4	+			97	+	+	+	+	B47V
Hubbell, Char	3	95	+	+	+	+		95	+	+	+	+	+		95	+	+	+	+				95	+	+	+	+	B47
Israel, Shosh	6	95	+	+	+	+		95	+	+	+	+	+		95	+	+	+	W4	+			95	+	+	+	+	
Keown, Paul M	3	98	+	+	+	+		98	+	+	+	+	+		98	+	+	+	+				98	+	+	+	+	
Klein, Tirza	5	NT						90	+	+	+	+	+		98	+	+	+	W6	+	B50		98	+	+	+	+	B27
Kvam, Vonnett	3	98	+	+	+	+	CX15	98	+	+	+	+	+		97	+	+	+	W6	+			97	+	+	+	+	B27
Lardy, N.M. D	6	90	+	+	+	+		90	+	+	+	+	+		90	+	+	+	+				90	+	+	+	+	B27V
Leech MD, Ste	3	80	+	+	+	+		80	+	+	+	+	+		80	+	+	+	W4	+			80	+	+	+	+	
Lo, Raymundo	8	98	+	+	+	+	A3	98	+	+	+	+	+	B71	98	01	+	+	+				98	+	+	+	+	
Loewenthal M	5	90	+	+	+	+		90	+	+	+	+	+		90	+	+	+	W4	+			90	+	+	+	+	
MacCann, Eile	3	98	+	+	+	+	2403	98	+	+	+	+	+		98	+	+	+	+		B39		98	+	+	+	+	B27
Mah, Helen	2	98	+	+	+	+		98	+	+	+	+	+		98	+	+	+	W6	+			98	+	+	+	+	
McAlack, Robe	2	97	+	+	+	+		98	+	+	+	+	+		97	+	+	+	W6	+			98	+	+	+	+	
McAlack-Hana	2	98	+	+	+	+		98	+	+	+	+	+		98	+	+	+	+				98	+	+	+	+	
McCluskey, Ja	9	95	+	+	+	+		90	+	+	+	+	+		85	+	+	+	W4	+			90	+	+	+	+	
Meyer, Pieter	9	85	+	+	+	+		85	+	+	+	+	+	B41	85	+	+	+	+				85	+	+	+	+	B47
Mpuntscha, Loy	7	90	+	+	+	+		90	+	+	+	+	+	BW4	90	+	+	+	+		BW4		90	+	+	+	+	A31
Norin, Allen	2	99	+	+	+	+		99	+	+	+	+	+		99	+	+	+	+				99	+	+	+	+	B47
Padua, Florec	6	98	+	+	+	+		98	+	+	+	+	+		98	+	+	+	+				98	+	+	+	+	B47
Pais, Maria L	9	99	+	+	+	+		99	+	+	+	+	+		99	+	+	+	+				99	+	+	+	+	
Park, Myoung	7	95	+	+	+	+		96	+	+	+	+	+		96	+	+	+	W4	+			95	+	+	+	+	
Permpikul, Ve	6	90	+	+	+	+		90	+	+	+	+	+		90	+	+	+	W4	+			90	+	+	+	+	B47
Pidwell/Aska	2	95	+	+	+	+		95	+	+	+	+	+		95	+	+	+	+				95	+	+	+	+	
Pollack, Mari	2	98	+	+	+	+		98	+	+	+	+	+		98	+	+	+	W6	+			98	+	+	+	+	27X47
Rees, Tracey	6	90	+	+	+	+		90	+	+	+	+	+		90	+	+	+	W4	+			90	+	+	+	+	27X47
Rosen-Bronso	2	99	+	+	+	+		99	+	+	+	+	+		99	+	+	+	+				99	+	+	+	+	B27
Rubocki, Rona	2	99	+	+	+	+		99	+	+	+	+	+		99	+	+	+	W4	+			99	+	+	+	+	
Sauer, Gottwa	13	80	+	+	+	+		80	+	+	+	+	+		70	+	+	+	W4	+			70	+	+	+	+	
Semana MD, Gi	3	99	+	+	+	+		99	+	+	2116	+			99	+	+	+	+				99	+	+	+	+	
Shai, Isaac	10	94	+	+	+	+		87	+	+	+	+	+		93	+	+	+	+				90	+	+	+	+	B47
Stamm, Luz	3	98	+	+	+	+	CX15	98	+	+	+	+	+		98	+	+	+	W4	+			98	+	+	+	+	

INTERNATIONAL CELL EXCHANGE

	***** CELL NO.1405 *****					***** CELL NO.1406 *****					***** CELL NO.1407 *****					***** CELL NO.1408 *****																				
	(CHIN)					(HISP)					(CHIN)					(CAUC)																				
INVESTIGATOR	A	A	B	B	C	B	B				A	A	A	B	B	C	C	B	A	A	A	B	B	C	C	B	B									
DAYS	B	2	5	6	W	W	W				B	2	3	5	3	W	X	W	B	1	2	6	6	4	W	W	B	2	3	1	3	W	W	W	W	
NAME	OLD	%	1	0	7	4	6	OTHERS			%	0	9	7	1	6	OTHERS	%	1	4	0	1	0	7	6	OTHERS	%	9	0	4	7	2	8	4	6	OTHERS

---

Stavropoulos	2	99	+	+	+	+	+	99	+	+	+	+	+	+	98	+	+	+	+W4	+	+	99	+	+	+	+	+	+	+
Tagliere, Jac	2	100	+	+	+	+	+	100	+	+	+	+	+	+	BW4	100	+	+	+	W4	+	+	100	+	+65	+	+	+	B47
Tilanus, Marc	6	90	+	+	+	+	+	90	+	+	+	+	+	+		90	+	+	+		+		90	+	+	+	+	+	
Vidan-Jeras,	6	100	+	+	+	+	+	100	+	+	+	+	+	+		100	+	+	+	+		BW4	100	+	+65	+	+	+	
Walter Reed	3	97	+	+	+	+	+	97	+	+	+	+	+	+		97	+	+	+	+	+		97	+	+65	+	+	+	B27
Wisecarver, J	6	98	+	+	+	+	+	98	+	+	+	+	+	+		98	+	+	+40	+	+		98	+	+	+	+	+	

\*\*\*\*\*  
 \* \*  
 \* SUMMARY TABLE \*  
 \* \*  
 \*\*\*\*\*

(CHIN)  
 \*\*\*\* CELL 1405 \*\*\*\*  
 (54 SAMPLES TYPED)  
 A2 100.0%  
 (100.0%)  
  
 B51 100.0%  
 (100.0%)  
  
 B60 98.1%  
 B40 1.9%  
 (100.0%)  
  
 CW7 59.3%  
  
 BW4 87.0%  
  
 BW6 87.0%

(HISP)  
 \*\*\*\* CELL 1406 \*\*\*\*  
 (56 SAMPLES TYPED)  
 A2 100.0%  
 (100.0%)  
  
 A3 100.0%  
  
 B50 92.9%  
 B21 1.8%  
 ( 94.6%)  
  
 B39 94.6%  
 B16 5.4%  
 (100.0%)  
  
 CW7 58.9%  
  
 CX17 28.6%  
 ( 28.6%)  
  
 BW6 87.5%

(CHIN)  
 \*\*\*\* CELL 1407 \*\*\*\*  
 (56 SAMPLES TYPED)  
 A11 92.9%  
 1101 5.4%  
 11.1 1.8%  
 (100.0%)  
  
 A24 100.0%  
 (100.0%)  
  
 B60 92.9%  
 B40 7.1%  
 (100.0%)  
  
 B61 41.1%  
 B40 14.3%  
 ( 55.4%)  
  
 C403 3.6%  
 CW4 25.0%  
 CW6 12.5%  
 ( 41.1%)  
  
 CW7 50.0%  
  
 BW6 87.5%

(CAUC)  
 \*\*\*\* CELL 1408 \*\*\*\*  
 (56 SAMPLES TYPED)  
 A29 100.0%  
 (100.0%)  
  
 A30 98.2%  
 ( 98.2%)  
  
 B14 39.3%  
 B64 1.8%  
 B65 58.9%  
 (100.0%)  
  
 B37 46.4%  
  
 CW2 64.3%  
  
 CW8 53.6%  
  
 BW4 85.7%  
  
 BW6 83.9%

(OTHERS FOUND)  
 CX15 9.3%  
 A68 3.7%  
 2403 1.9%  
 CW6 1.9%  
 A3 1.9%

(OTHERS FOUND)  
 BW4 3.6%  
 B41 1.8%  
 3905 1.8%  
 B49 1.8%  
 B70 1.8%  
 B71 1.8%

(OTHERS FOUND)  
 BW4 5.4%  
 B39 1.8%  
 B50 1.8%  
 B70 1.8%  
 CW2 1.8%

(OTHERS FOUND)  
 B47 17.9%  
 B27 14.3%  
 27X47 5.4%  
 B37V 3.6%  
 A31 1.8%  
 B27V 1.8%  
 B47V 1.8%